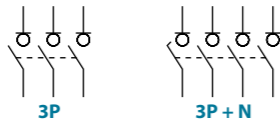


CCF/CCP Changeover switch base mounting 3P - 3P+N

Size 2
A 500|630|800



		CODE-500A	CODE-630A	CODE-800A
CCF	3P	CCF05003PS0	CCF06303PS0	CCF08003PS0
	3P+N	CCF05003NS0	CCF06303NS0	CCF08003NS0
CCP	3P	CCP05003PS0	CCP06303PS0	CCP08003PS0
	3P+N	CCP05003NS0	CCP06303NS0	CCP08003NS0



Technical information



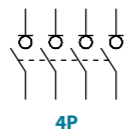
tests:



According to IEC/EN 60947-3

		500			630			800		
Rated thermal current	I _{th} in ambient at 40° C 60% HR	A	500	630	800					
Rated insulation voltage	U _i	V	1000	1000	1000					
Rated dielectric strength	50 Hz., 1 min.	V	8000	8000	8000					
Rated impulse withstand voltage	U _{imp}	kV	12	12	12					
AC Rated operational current ^{*(1)} (Rated operational frequency 50/60 Hz)	I _e	400V AC21A	A	500	630	800				
		400V AC22A	A	500	630	800 ^{*(5)}				
		500V AC21A	A	500	630	800				
		500V AC22A	A	500	630	800 ^{*(5)}				
		690V AC21A	A	500	630	800				
		690V AC22A	A	400	500	630 ^{*(5)}				
AC Rated operational power ^{*(2)}	P _e	3x400V AC23A	kW	200	250	315				
		3x500V AC23A	kW	156	197	250				
		3x690V AC23A	kW	173	216	272				

		500			630			800		
Rated capacitor power	400V, sen φ=0,65	kVAr	208	262	333					
Rated breaking capacity	400V AC22A	A	1500	1890	2400					
Rated making capacity	400V AC22A	A	1500	1890	2400					
Short - circuit behaviour										
Short - circuit making capacity ^{*(2)}	I _{cm}	kA (peak)	20	20	20					
Short - time withstand current (1 sec.)	I _{cw}	kA rms	13	13	13					
Minimum number of mechanical operations ^{*(4)}		Cycles	10000	10000	10000					
Minimum number of electrical operations	400V AC22A	Cycles	1000	1000	100 ^{*(5)}					
Maximum weight (3/4 poles)	CCF	Kg	11,5/12,6	11,5/12,6	11,9/13,2					
	CCP	Kg	12,8/14,3	12,8/14,3	13/14,6					



Also available 4P changeover switches under request, consult reference

^{*(1)} Other voltages and/or utilization categories; please consult us
^{*(2)} Indicative values, value cos φ=0,8
^{*(3)} Without limiting protective device (short - circuit maintained 50 ms. - 200 ms.)
^{*(4)} Please consult us for more operations
^{*(5)} AC22B

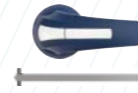


Accessories



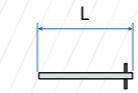
Direct handle

CODE DCCLI21



Panel handle included shaft ^{*(e1)}

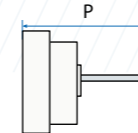
IP65|UL50E/NEMA 250
Types: 1, 3R, 4, 4X y 12
CODE DCCLA21



Shafts

Standard shaft included ^{*(e1)}

L (mm) | P (mm) |
195 | 195... 272



Shaft extensions

Type 1
L (mm) | P (mm) | CODE
336 | 195... 413 | DS-EP32

Type 2
L (mm) | P (mm) | CODE
535 | 195... 612 | DS-EP24



Rear protective plate

3P | 4P
DCCPP21 | DCCPP22



Terminal shrouds

POS. I	Inputs	POS. II	POS. I&II	Common output
3P	3P	3P+N	3P+N	3P 3P+N
DM2CU22	DM2CU21	DM2CU23	DCCCU21	DCCCU22



Auxiliary contacts

1NA+1NC CODE D5LAU01
2NA+2NC CODE D5LAU02

I_e = 16 A (resistive loads)
4 A (inductive loads) at 250 Vac.

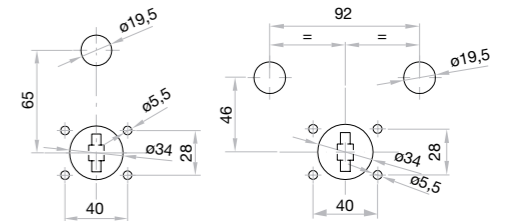


Safety key lock device

Simple CODE D5LCB21
Double CODE D5LCF21

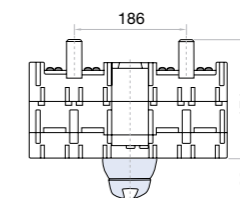
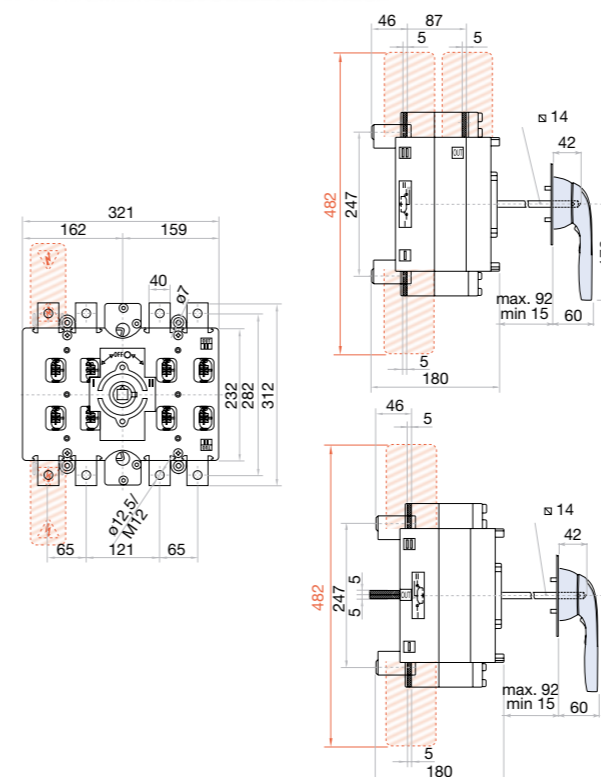
For external handle, lock the handle by means of a key in position "OFF" (under request, in "ON"), the key can only be removed with the handle locked

Panel drilling for handle and keylock device
Simple | Double

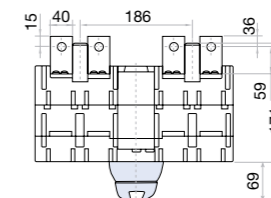


Dimensions (mm)

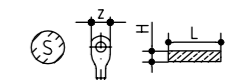
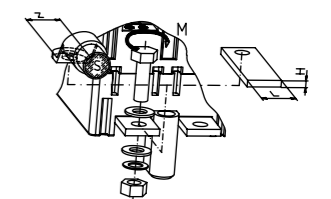
Panel drilling for panel handle



CCF



CCP



S max (Cu)	Z max	H max (Cu)	L max (Cu)	M
mm ²	mm	mm	mm	Nxm
2x240	45	2x6	45	M12 45