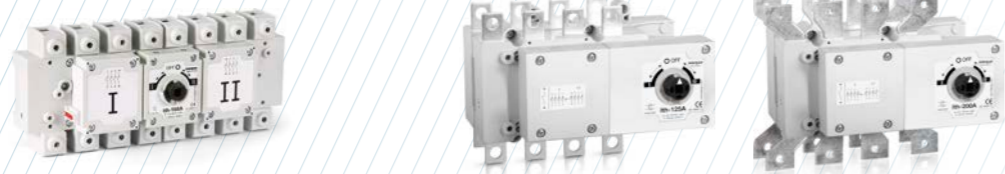


S5000L | S5000F

Changeover switch base mounting 3P - 3P+N

Size 0
A 125|160|200



3P	CODE-125A	CODE-160A	CODE-125A	CODE-160A	CODE-200A
	S5L01253PB0	S5L01603PB0	S5F01253PS0	S5F01603PS0	S5F02003PS0
3P + N	S5L01253NB0	S5L01603NB0	S5F01253NS0	S5F01603NS0	S5F02003NS0



Technical information

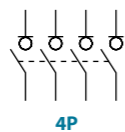


tests:

According to IEC/EN 60947-3

		125			160			200			
Rated thermal current	I _{th} in ambient at 40° C 60% HR	A	125	160	200						
Rated insulation voltage	U _i	V	1000	1000	1000						
Rated dielectric strength	50 Hz, 1 min.	V	4000	4000	4000						
Rated impulse withstand voltage	U _{imp}	kV	8	8	8						
AC Rated operational current ^{*(1)} (Rated operational frequency 50/60 Hz)	I _e 400V AC21A	A	125	160	200						
		A	125	160	200						
		A	125	160	200						
		A	125	160	180						
		A	100	125	160						
AC Rated operational power ^{*(2)}	P _e 3x400V AC23A	kW	69,2	88,6	88,6						
		kW	69,2	88,6	88,6						
		kW	76,4	76,4	76,4						
		kW	76,4	76,4	76,4						

		125			160			200			
Rated capacitor power	400V, sen φ=0,65	kVA	56,2	72	90						
Rated breaking capacity	400V AC22A	A	375	480	600						
Rated making capacity	400V AC22A	A	375	480	600						
Short - circuit behaviour											
Short - circuit making capacity ^{*(3)}	I _{cm} kA (peak)		13	13	13						
Short - time withstand current (1 sec.)	I _{cw} kA rms		7	7	7						
Minimum number of mechanical operations ^{*(4)}	Cycles		30000	30000	30000						
Minimum number of electrical operations	400V AC22A	Cycles	1000	1000	1000						
Maximum weight (3/4 poles)	SSL	Kg	1,8/2	1,8/2							
	S5F	Kg	1,8/2,1	1,8/2,1	1,9/2,2						



Also available 4P changeover switches under request, consult reference

^{*(1)} Other voltages and / or utilization categories. Please consult
^{*(2)} Indicative values, value cos φ=0,8
^{*(3)} Without limiting protective device (short-circuit maintained 50 ms. - 200 ms.)
^{*(4)} Please consult us for more operations



Accessories

- Direct handle**
CODE D5LSI01
- Panel handle** included shaft ^{*(e1)}
CODE D5LLA01
- Shafts**
Standard shaft included ^{*(e1)}

L (mm)	P (mm)
177	163... 250,5
S5F 177	87... 198

Shaft extensions

Type 1		CODE
L (mm)	P (mm)	
250	163... 323,5	DS-EP04
S5F 250	87... 271	DS-EP04
Type 2		CODE
L (mm)	P (mm)	
387	163... 460,5	DS-EP05
S5F 387	87... 408	DS-EP05
- Auxiliary contacts**
1NA+1NC CODE S5F DS-AU11
CODE SSL D5LAU01
2NA+2NC CODE S5F DS-AU12
CODE S5F D5LAU02
I_e = 16 A (resistive loads)
4 A (inductive loads) at 250 Vac.



Terminal protection
CODE DS-CU01
(1 unit for input or output only frontal side)



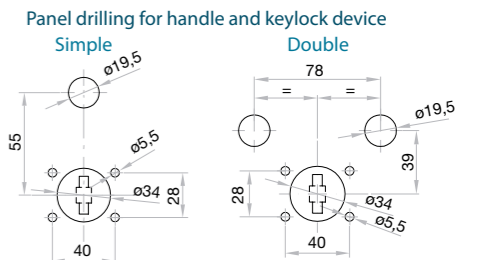
Bridging links (4 pieces)
CODE S5F D5LPC03
CODE SSL D5LPC01



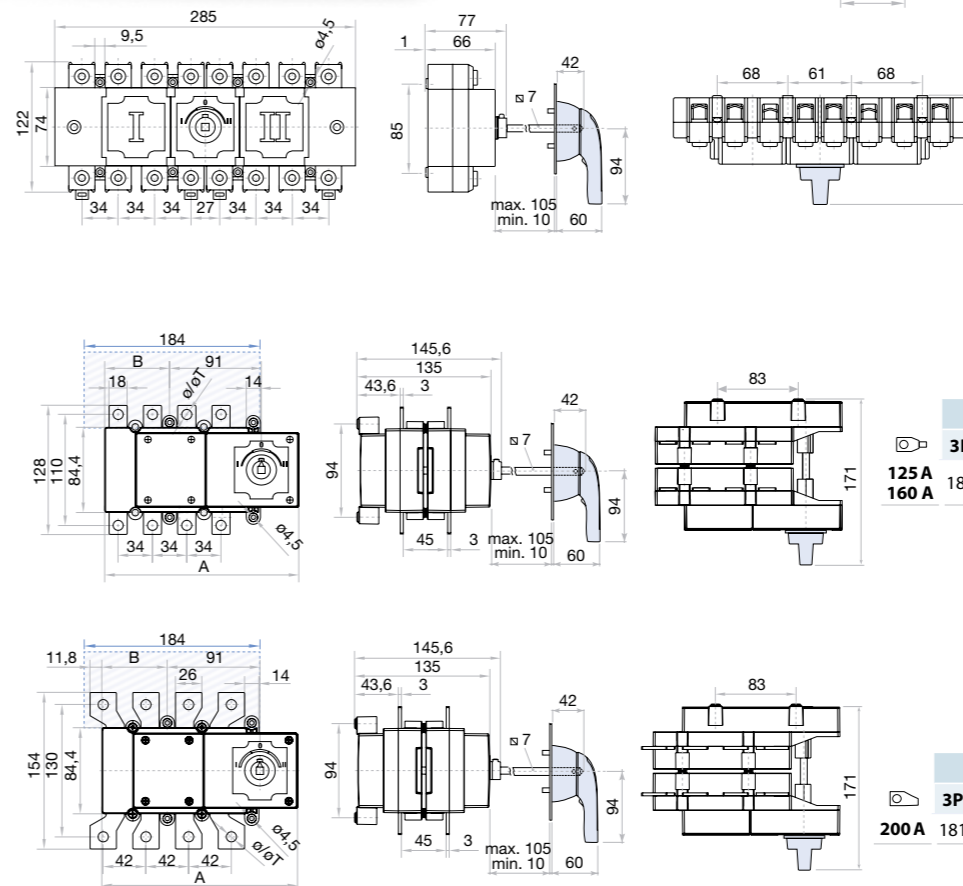
DIN rail mounting
CODE DS-DN01
(only for SSL changeover switches, order two kits)



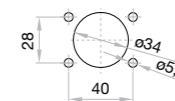
Safety key lock devices
Simple CODE D5LCBB1
Double CODE D5LCBB1
For external handle, lock the handle by means of a key in position "OFF" (under request, in "ON"), the key can only be removed with the handle locked



Dimensions (mm)



Panel drilling for panel handle



S max (Cu)	M
mm ²	Nxm
125 A	95 4
160 A	

	A	B	ø T
125 A	181	192	53 64 10 M8
160 A			

S max (Cu)	H max (Cu)	L max (Cu)	M
mm ²	mm	mm	Nxm
95	5	25	M8 13

	A	B	ø T
200 A	181	192	53 64 10 M10

S max (Cu)	H max (Cu)	L max (Cu)	M
mm ²	mm	mm	Nxm
120	5	30	M10 18