



design: ufficio tecnico Stral / Stral technical department

## FLYBACK76LED

### Corpo

Corpo in acciaio inox AISI 316L di diametro 76mm disponibile nella versione satinata ed elettro-lucidata. Viti in acciaio inox A4. Flangia di fissaggio in acciaio inox AISI 316L. Diffusore in policarbonato opale o trasparente. Disponibile nelle altezze: 500mm, 750mm e 1150mm. Verniciatura del corpo disponibile in vari colori a richiesta.

### Sorgenti

LED multi-chip da 7W. Temperatura colore da 3000K e 4000K.

### Emissioni

Diffusore in policarbonato opale diffondente o trasparente.

### Alimentazione

Alimentatore elettronico integrato. 220-240 Vac 50/60 Hz. Classe di isolamento II. Classe energetica A/A+/A++ Regolamento EU 874/2012. Questi dispositivi sono muniti di sorgente a LED integrata. Le sorgenti di questo dispositivo non sono sostituibili.

### Installazione

Apparecchio per installazione a terra tramite tassello, oppure, come accessorio, tirafondi in acciaio inox A2 da cementare..

### Body

Body in AISI 316 stainless steel with a diameter of 76mm available in satin and electro-polished version. Screws in A4 stainless steel. Fixing anchor bolts in AISI 316L stainless steel. Diffuser in opal or transparent polycarbonate. Available in the followings heights: 500mm, 750mm and 1150mm. Painting process of the body in different colors is available on demand.

### Sources

Multi-chip LED with a power of 7W. Available with 3000K and 4000K CCT.

### Emissions

Diffuser in opal or transparent polycarbonate.

### Supply

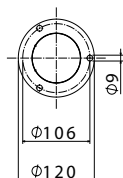
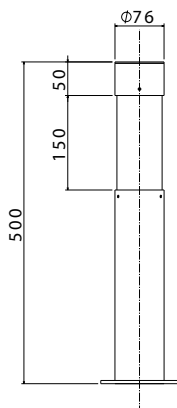
Integrated electronic power supply. 220-240 Vac 50/60 Hz. Class of insulation II. Energy class: A/A+/A++. EU Regulation 874/2012. These devices are equipped with integrated LED modules, The light sources of these devices are not replaceable.

### Installation

Luminaire for floor installation through fishers, or, as accessory, anchor bolts in A2 stainless steel to cement.

# FLYBACK76LED

versione H 500 / H 500 version



IK08

IP65



**LED A A+ A+**  
Alimentatore elettronico incluso  
*Electronic driver included*

Vetro trasparente/*transparent glass*

**463.0001** LED 7W bianco/*white 3000K*

**463.0002** LED 7W bianco/*white 4000K*

Vetro satinato/*satin glass*

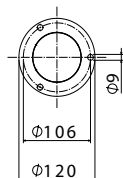
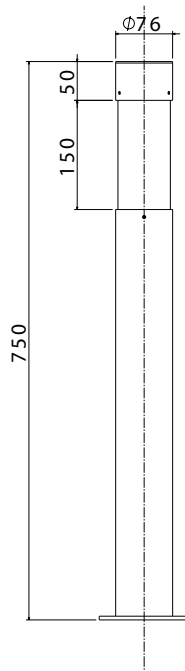
**463.0004** LED 7W bianco/*white 3000K*

**463.0005** LED 7W bianco/*white 4000K*

**61001** Flangia di fissaggio con 3 tirafondi/*Fixing flange with three anchor bolts*

FLANGIA / FLANGE PAG. 288

versione H 750 / H 750 version



IK08

IP65



**LED A A+ A+**  
Alimentatore elettronico incluso  
*Electronic driver included*

Vetro trasparente/*transparent glass*

**463.0101** LED 7W bianco/*white 3000K*

**463.0102** LED 7W bianco/*white 4000K*

Vetro satinato/*satin glass*

**463.0104** LED 7W bianco/*white 3000K*

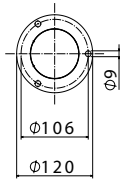
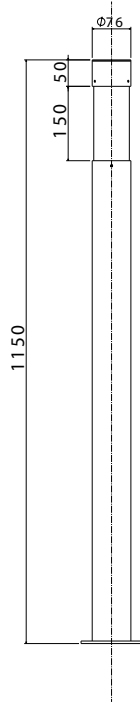
**463.0105** LED 7W bianco/*white 4000K*

**61001** Flangia di fissaggio con 3 tirafondi/*Fixing flange with three anchor bolts*

FLANGIA / FLANGE PAG. 288

# FLYBACK76LED

versione H 1150 / H 1150 version



IK08

IP65



**LED** A A+ A++

Alimentatore elettronico incluso  
Electronic driver included

Vetro trasparente/transparent glass

463.0201 LED 7W bianco/white 3000K

463.0202 LED 7W bianco/white 4000K

Vetro satinato/satin glass

463.0204 LED 7W bianco/white 3000K

463.0205 LED 7W bianco/white 4000K

61001 Flangia di fissaggio con 3 tirafondi/Fixing flange with three anchor bolts

FLANGIA / FLANGE PAG. 288

