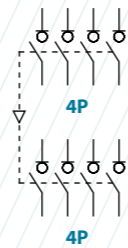


S5000M DC Switch - disconnectors for DC current 8P (multi-string)



Size 2

A 400



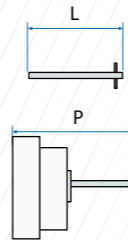
Accessories



>> Direct handle
CODE DS-LI22



>> Panel handle included shaft ^{*(e1)}
IP65|UL50E/NEMA 250
Types: 1, 3R, 4, 4X y 12
CODE DS-LA22



>> Shafts
Standard shaft included ^{*(e1)}
L (mm) | P (mm)
239 | 325... 490



>> Auxiliary contacts
1NA+1NC CODE DS-AU11
2NA+2NC CODE DS-AU12

I_e = 16 A (resistive loads)
4 A (inductive loads) at 250 Vac.



>> Terminal shrouds (2 units)

	A	B	C D
TOP	DS-CU28	DS-CU20	DS-CU20
BOTTOM	DS-CU29	DS-CU21	DS-CU28

The shrouds can only be fitted in the front switch.



>> Bridging links (2 or 3 units)

A B	CODE DS-PI220U	C D	CODE DS-PI230U
A B	CODE DS-PI270U	C D	CODE DS-PI260U

Technical information



According to IEC/EN 60947-3
GB14048.3

Rated thermal current in ambient at RH 60%	I _{th}	40° C	A	400
		50° C	A	400
		60° C	A	400
Rated insulation voltage DC20	U _i	V		1500
Rated dielectric strength	50 Hz, 1 min.	V		8000
Rated impulse withstand voltage	U _{imp}	kV		12
Rated operational current ^{*(1)} DC21B	I _e	U _e		
		400 Vdc	A	400
		600 Vdc	A	400
		800 Vdc	A	400
		1000 Vdc	A	400

tests:

Short - circuit behaviour			
Short - circuit making capacity ^{*(2)}	I _{cm}	kA (peak)	26
Maximum power dissipation		A ² s (x 10 ³)	1600
Minimum number of mechanical operations ^{*(3)}		Cycles	10000
Minimum number of electrical operations	DC21B 1000Vdc	Cycles	200
Maximum weight		Kg	13

^{*(1)} Other voltages and / or utilization categories. Please consult
^{*(2)} Without limiting protective device (short-circuit maintained 50... 200 ms.)
^{*(3)} Please consult us for more operations

Connection diagram

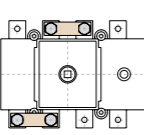
Connection diagram

A

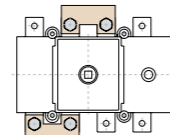


Bridging links

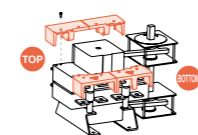
Front switch



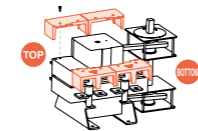
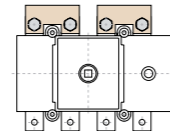
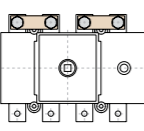
Rear switch



Terminal shrouds (On front switch only)

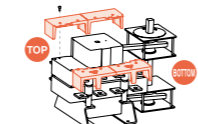
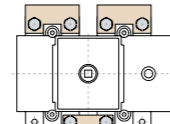
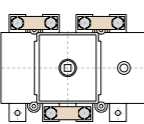


B

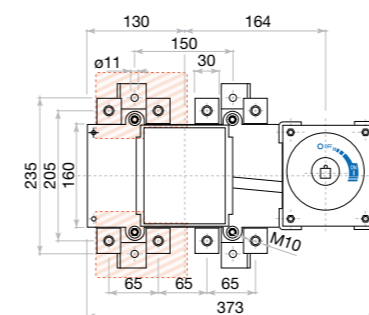


C

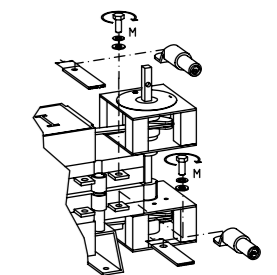
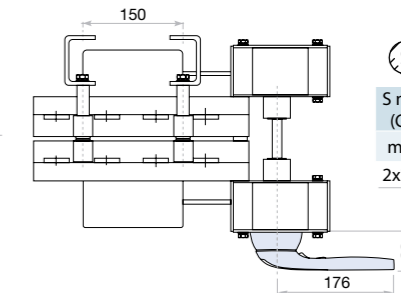
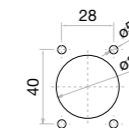
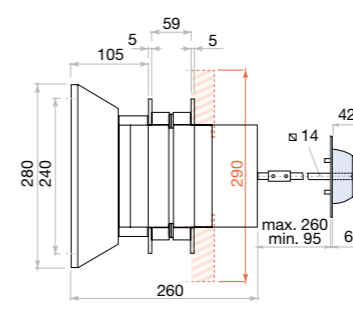
D



Dimensions (mm)



Panel drilling for panel handle



S max (Cu) mm ²	H max (Cu) mm	L max (Cu) mm	T	M
2x240	2x5	40	M10	24

