

S5000M DC Switch - disconnectors for DC current

3P+3P 4P+4P

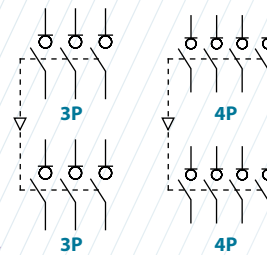


CODE-600A **3P+3P** S5M125033CO CODE-800A **4P+4P** S5M125044CO

Size 3

A 600|800

1500Vdc



Technical information



According to IEC-EN-UNE 60947-1
IEC-EN-UNE 60947-3

				3+3	4+4
Rated thermal current in ambient at RH 60%	40° C	A		600	800
	50° C	A		600	800
	60° C	A		600	800
Rated insulation voltage DC20	Ui	V		1500	1500
Rated dielectric strength	50 Hz., 1 min.	V		8000	8000
Rated impulse withstand voltage	Uimp	kV		12	12
Rated operational current	le	DC21B 1500 Vdc	A	600	800
Rated making capacity		DC21 1500 Vdc	A	-	800

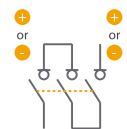
*⁽¹⁾ Without limiting protective device (short-circuit maintained 50... 200 ms.)
*⁽²⁾ With limiting protective device which set a limit to peak value short-circuit making capacity and maximum power dissipation to indicated values

Short - circuit behaviour			
Maximum cut - off current * ⁽¹⁾	Icm	kA (peak)	60
Short - time withstand current (1 sec.)	Icw	kA rms	25
Conditional short - circuit current (rms value) * ⁽²⁾		kA rms	72
Maximum cut - off current (peak value)		kA (peak)	55
Maximum power dissipation		A ² s (x10 ³)	4900
Minimum number of mechanical operations		Cycles	10000
Minimum number of electrical operations	DC21B 1500Vdc	Cycles	200
Maximum weight 3+3		Kg	18,5
Maximum weight 4+4		Kg	20

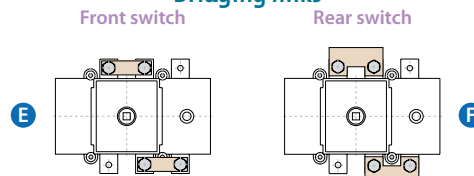
Connection diagram

3P+3P

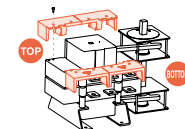
Connection diagram



Bridging links



Terminal shrouds (On front switch only)

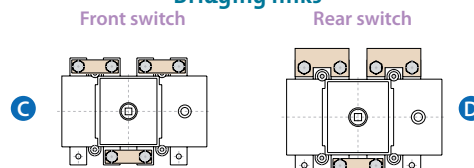


4P+4P

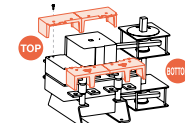
Connection diagram



Bridging links



Terminal shrouds (On front switch only)



Accessories



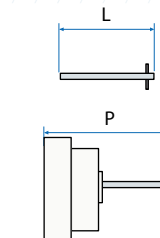
Direct handle
CODE DS-LI41



Panel handle included shaft *^(e1)
IP65|UL50E/NEMA 250
Types: 1, 3R, 4, 4X y 12
CODE DS-LA41



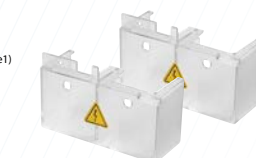
Panel handle without shaft
IP65|UL50E/NEMA 250
Types: 1, 3R, 4, 4X y 12
CODE DS-LA43



Shafts
Standard shaft included *^(e1)
L (mm) | P (mm)
239 | 408... 573



Auxiliary contacts
1NA+1NC CODE DS-AU11
2NA+2NC CODE DS-AU12
Ie = 16 A (resistive loads)
4 A (inductive loads) at 250 Vac.



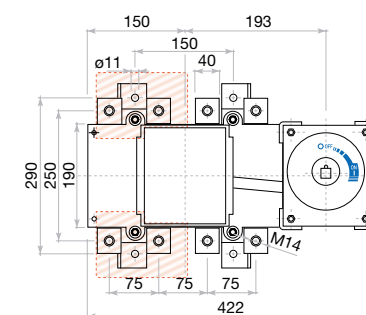
Terminal shrouds (2 units)
E C
TOP DS-CU380U | DS-CU300U
BOTTOM DS-CU300U | DS-CU380U

The shrouds can only be fitted in the front switch.

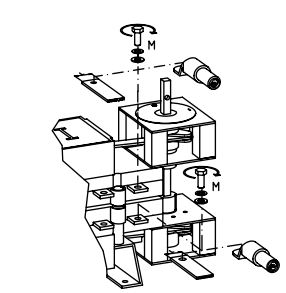
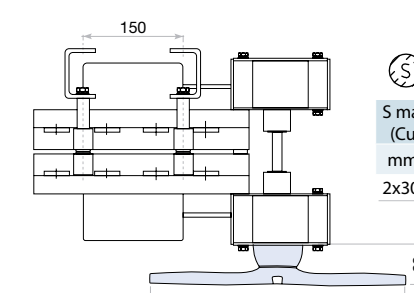
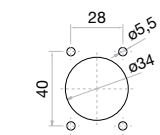
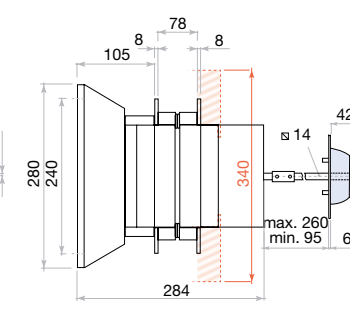


Bridging links (2 or 3 units)
3P+3P 4P+4P
E DS-PI320U | C DS-PI330U
F DS-PI370U | D DS-PI360U

Dimensions (mm)



Panel drilling for panel handle



S max (Cu)	H max (Cu)	L max (Cu)	M
mm ²	mm	mm	Nxm
2x300	2x10	50	M14 45

