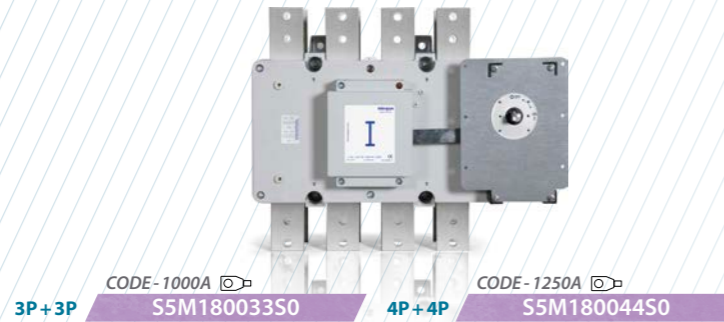


S5000M DC Switch - disconnectors for DC current

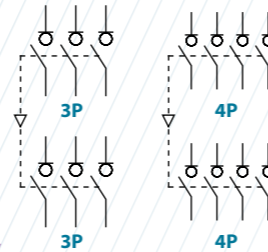
3P+3P 4P+4P



Size 4

A 1000|1250

1500Vdc



Technical information



According to IEC-EN-UNE 60947-1
IEC-EN-UNE 60947-3

			3+3	4+4
Rated thermal current in ambient at RH 60%	40° C	A	1000	1250
	50° C	A	1000	1250
	60° C	A	1000	1250
Rated insulation voltage DC20	Ui	V	1500	1500
Rated dielectric strength	50 Hz., 1 min.	V	10000	10000
Rated impulse withstand voltage	Uimp	kV	12	12
Rated operational current	le	DC21B	A	1000
		1500 Vdc	A	1250
Rated making capacity	4+4	DC21	A	-
		1500 Vdc	A	1250

Short - circuit behaviour

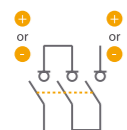
Maximum cut - off current ⁽¹⁾	Icm	kA (peak)	75
Short - time withstand current (1 sec.)	Icw	kA rms	50
Minimum number of mechanical operations		Cycles	10000
Minimum number of electrical operations	DC21B 1500V	Cycles	100
Maximum weight 3+3		Kg	42,9
Maximum weight 4+4		Kg	47,3

⁽¹⁾ Without limiting protective device (short-circuit maintained 50... 200 ms.)

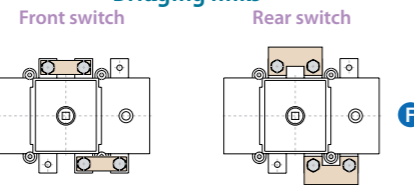
Connection diagram

3P+3P

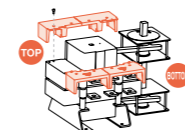
Connection diagram



Bridging links



Terminal shrouds (On front switch only)

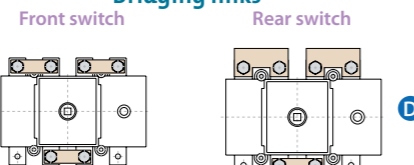


4P+4P

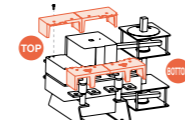
Connection diagram



Bridging links



Terminal shrouds (On front switch only)



Accessories



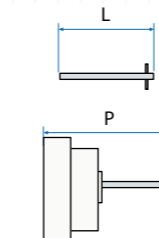
Direct handle
CODE DS-LI41



Panel handle included shaft ^(e1)
IP65|UL50E/NEMA 250
Types: 1, 3R, 4, 4X y 12
CODE DS-LA41



Panel handle without shaft
IP65|UL50E/NEMA 250
Types: 1, 3R, 4, 4X y 12
CODE DS-LA43



Shafts
Standard shaft included ^(e1)
L (mm) | P (mm)
239 | 408... 573



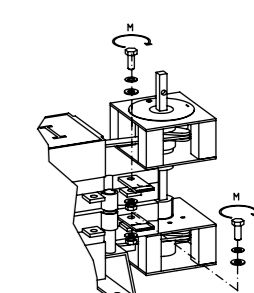
Auxiliary contacts
1NA+1NC CODE DS-AU11
2NA+2NC CODE DS-AU12
Ie = 16 A (resistive loads)
4 A (inductive loads) at 250 Vac.



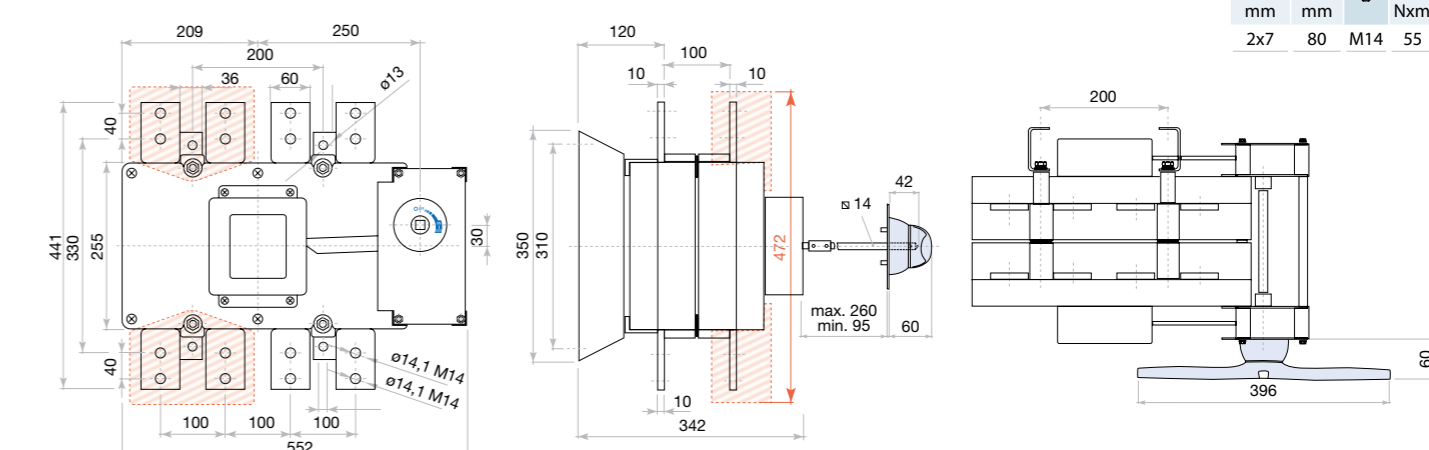
Terminal shrouds (2 units)
3P+3P | 4P+4P
E | C
TOP DS-CU480U | DS-CU400U
BOTTOM DS-CU400U | DS-CU480U



Bridging links (2 or 3 units)
3P+3P | 4P+4P
E | C
DS-PI420U | DS-PI430U
F | D
DS-PI470U | DS-PI460U



Dimensions (mm)



H max (Cu)	L max (Cu)	T	M
mm	mm	Nxm	
2x7	80	M14	55

