

Compact prewired split-core



DM1TMA...

new



DM2TMA...

new

Ordercode	Primary current I _{pn}	Burden		Qty per pkg.	Weight [kg]
		cl. 0,5	cl. 1		
	/5 [A]	[VA]	[VA]	n°	

24x24mm/0.94x0.94" hole. Cable supplied as standard, length 1m.

DM1TMA 0100	100	—	1.2	1	0.200
DM1TMA 0150	150	—	1.2	1	0.200
DM1TMA 0200	200	—	1.2	1	0.200
DM1TMA 0250	250	—	1.2	1	0.200

36x38mm/1.42x1.50" hole. Cable supplied as standard, length 1m.

DM2TMA 0250	250	—	1.5	1	0.380
DM2TMA 0300	300	—	1.5	1	0.380
DM2TMA 0400	400	—	1.5	1	0.380
DM2TMA 0500	500	—	1.5	1	0.380

General characteristics

The DM...TMA type instrument transformers (CTs) are installed in an electrical system to reduce the line current to a secondary value of 5A compatible with the ammeter inputs of the digital multimeters or protection relays. DM...TMA are instrument transformers in class 1 without a primary winding and are normally used for high primary current values starting from 100A.

Operational characteristics

- Operating frequency: 50-60Hz
- Secondary output current: 5A
- Overload withstand: 120% I_{pn}
- IEC rated insulation voltage U_i: 720V
- IEC rated short-time thermal current I_{th}: 40-60 I_{pn} for 1 second
- IEC rated dynamic current I_{dyn}: 2.5 I_{th} for 1 second
- Cable supplied as standard, length 1m.
- Insulation (dry type): Class E
- Ambient conditions:
 - Operating temperature: -25...+50°C
 - Storage temperature: -40...+80°C
 - Relative humidity, non condensing: 90%.

Reference standards

Compliant with standards: IEC/EN 61869-2, IEC/EN 61869-1.

Split-core



DM1TA...



DM2TA...



DM3TA...



DM4TA...

Ordercode	Primary current I _{pn}	Burden		Qty per pkg.	Weight [kg]
		cl. 0,5	cl. 1		
	/5 [A]	[VA]	[VA]	n°	

50x80mm/1.97x3.15" hole.

DM1TA 0250	250	1	2	1	0.900
DM1TA 0300	300	1.5	3	1	0.900
DM1TA 0400	400	1.5	3	1	0.900
DM1TA 0500	500	2.5	5	1	0.900
DM1TA 0600	600	2.5	5	1	0.900
DM1TA 0800	800	3	7.5	1	0.900
DM1TA 1000	1000	5	10	1	0.900

80x80mm/3.15x3.15" hole.

DM2TA 0250	250	1	2	1	1.050
DM2TA 0300	300	1.5	3	1	1.050
DM2TA 0400	400	1.5	3	1	1.050
DM2TA 0500	500	2.5	5	1	1.050
DM2TA 0600	600	2.5	5	1	1.050
DM2TA 0800	800	3	7.5	1	1.050
DM2TA 1000	1000	5	10	1	1.050

80x120mm/3.15x4.72" hole.

DM3TA 0500	500	—	4	1	1.250
DM3TA 0600	600	—	5	1	1.250
DM3TA 0800	800	3	7.5	1	1.250
DM3TA 1000	1000	5	10	1	1.250
DM3TA 1250	1250	7.5	15	1	1.250
DM3TA 1500	1500	8	17	1	1.250

80x160mm/3.15x6.30" hole.

DM4TA 2000	2000	15	20	1	3.160
DM4TA 2500	2500	15	20	1	3.340
DM4TA 3000	3000	20	25	1	3.500
DM4TA 4000	4000	20	25	1	3.760

General characteristics

The DM...TA type instrument transformers (CTs) are installed in an electrical system to reduce the line current to a secondary value of 5A compatible with the ammeter inputs of the digital multimeters or protection relays. DM...TA are instrument transformers in class 0.5/1 without a primary winding and are normally used for high primary current values starting from 250A.

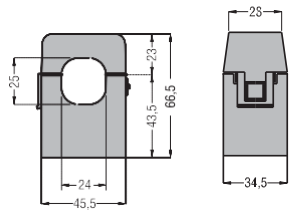
Operational characteristics

- Operating frequency: 50-60Hz
- Secondary output current: 5A
- Overload withstand: 120% I_{pn}
- IEC rated insulation voltage U_i: 720V
- IEC rated short-time thermal current I_{th}: 40-60 I_{pn} for 1 second
- IEC rated dynamic current I_{dyn}: 2.5 I_{th} for 1 second
- Insulation (dry type): Class E
- Screw terminals
- Sealable terminal covers
- Screw fixing (fixing elements standard supplied with the product)
- IEC degree of protection: IP30
- Ambient conditions:
 - Operating temperature: -25 ... +50°C
 - Storage temperature: -40 ... +80°C.
 - Relative humidity, non condensing: 90%.

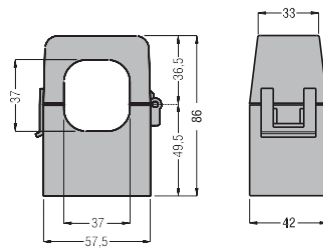
Reference standards

Compliant with standards: IEC/EN 61869-2, IEC/EN 61869-1.

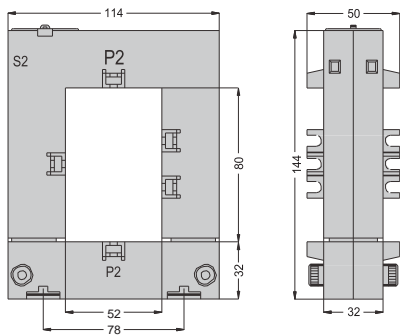
Compact prewired split-core
DM1TMA...



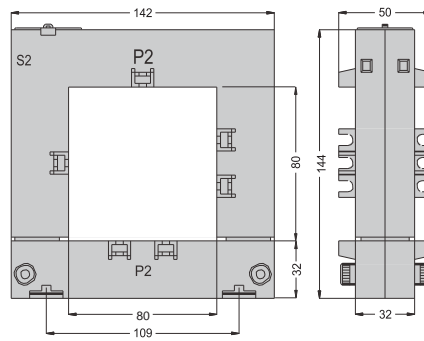
DM2TMA...



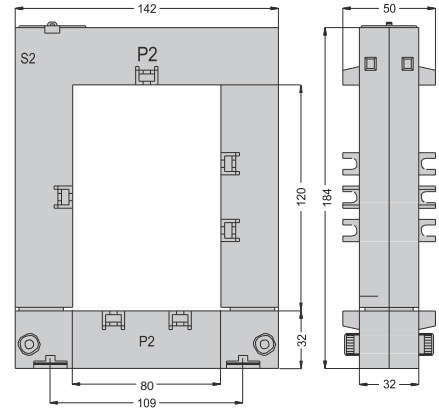
Split-core DM1TA...



DM2TA...



DM3TA...



DM4TA...

