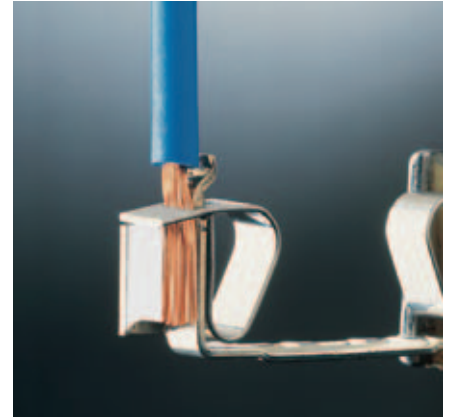


Spring clamp terminal blocks

- available in grey RAL 7042 colour only



For high harness volumes, CABUR offers its own range of spring-clamp terminal blocks suitable for cables from 0.2 to 10 mm² and reduced current intensity values.

In order to protect the clamping system, a special stop is provided in the insulating body; this has the function of ensuring the spring does not go over its elastic range, in case of handling carried out by unskilled workforce.

The appropriate sizing of the wire insertion hole, fully in compliance with the requirements given by IEC 60947-1 Standard concerning the gauge, guarantees the insertion of any type of conductor having the rated cross-section, also with a ferrule. The resulting connection, with respect to the technology adopted, is of the maximum reliability and safety under both the aspects of the quality of the materials and for the particular conformation of the components; in this way the damaging of unprepared flexible conductors is avoided.

The insertion of the wire is vertical; this means further time and costs savings, especially where space is limited, but where guaranteed high-density connections are required.

For the commoning of different elements, a practical and safe cross-connection system is available.

The terminals with rated cross sections between 1.5 mm and 4 mm² can be connected one with another in the most various ways thanks to our exclusive "Easy Bridge" (PTC) connection system, with quick coupling, which combines efficiency, rapidity and flexibility and ensures at the same time an extraordinary economic result; these characteristics, **together with an IPXXB intrinsic installation, without the need of further insulation protections** (for cables, terminals and cross-connections), guarantee a connectivity which is superior to that offered by competitors.



CNU/8

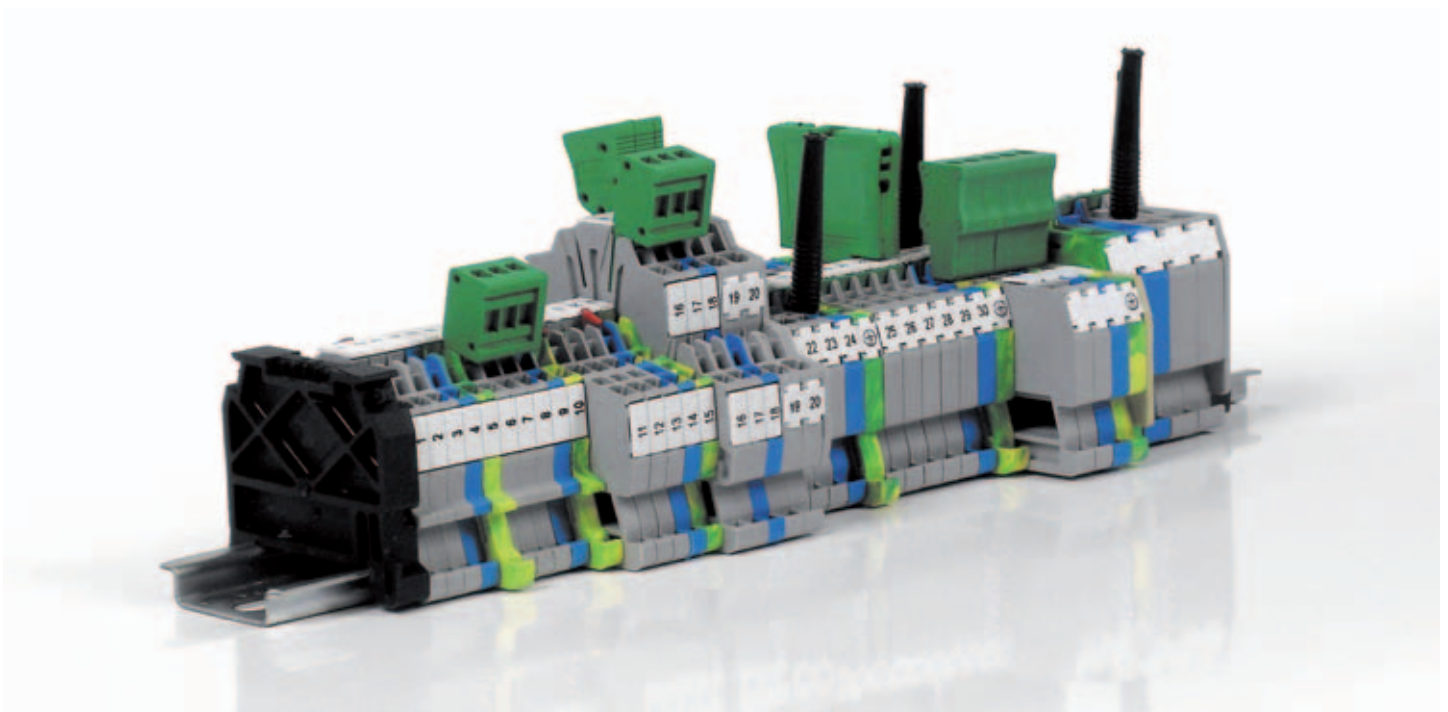


SHZ

Marking systems

Our particular marking system has to be highlighted. The same **SHZ** numbering strip, in fact, can be inserted on both sides of the terminal block or on the appropriate housings provided in the upper part of the terminal block. This means easy identification of every terminal block in the electrical panel.

It is possible also to perform the marking also using **CNU/8** tags.



HMM Series

with polyamide insulating body

- UL94V-0
- mounting onto PR/3 type rails according to IEC 60715

Std., "TH/35" type

- available in standard (grey RAL 7042 colour) or (Ex)i "intrinsic safety" circuits (blue RAL 5015 colour) versions



PTC jumper configurations					
SINGLE OR PARALLEL EXTENDING	POLE SKIPPING	ADJACENT WITHOUT BARRIER	ADJACENT WITH BARRIER	STAGGERED MODE	PARALLEL SKIPPING
Insulation voltage in the above configurations (V)					
630	630		320	630	630

The /GR tag indicates the grey colour version.

grey version	HMM.1/GR Cat. No. HM400GR	HMM.1/1+2/GR Cat. No. HM410GR	HMM.1/2+2/GR Cat. No. HM420GR
(Ex)i version	HMM.1 (Ex)i Cat. No. HI400	HMM.1/1+2 (Ex)i Cat. No. HI410	HMM.1/2+2 (Ex)i Cat. No. HI420
TECHNICAL CHARACTERISTICS			
function / type	feed-through	feed-through, 1 input and 2 outputs	feed-through, 2 inputs and 2 outputs
rated cross-section (mm ²)	1,5	1,5	1,5
connecting capacity			
flexible (mm ²)	0,2 ÷ 2,5	0,2 ÷ 2,5	0,2 ÷ 2,5
rigid (mm ²)	0,2 ÷ 2,5	0,2 ÷ 2,5	0,2 ÷ 2,5
max. flexible with ferrule (mm ²)-ferrule type	1,5 - WP15/14	1,5 - WP15/14	1,5 - WP15/14
rated voltage / rated current / gauge conf. to IEC 60947-7-1	500 V / 17,5 A / B2	500 V / 17,5 A / B2	500 V / 17,5 A / B2
rated voltage / rated current / AWG UL	600 V / 15 A / 26-14 AWG	600 V / 15 A / 26-14 AWG	600 V / 15 A / 26-14 AWG
rated impulse withstand voltage / pollution degree	8 KV / 3	8 KV / 3	8 KV / 3
insulation stripping length (mm)	10	10	10
height / width / thickness	43 / 45 / 4,2	43 / 56 / 4,2	43 / 65 / 4,2
height / width / thickness	51 / 45 / 4,2	51 / 56 / 4,2	51 / 65 / 4,2
height / width / thickness	-	-	-

APPROVALS



ACCESSORIES		Type	Cat. No.	Type	Cat. No.	Type	Cat. No.
End sections	grey blue	HMT.1/PT/GR	HM401GR	HMT.1/1+2/PT/GR	HM411GR	HMT.1/2+2/PT/GR	HM421GR
Permanent cross connection (intrinsically IPXXB protected once mounted)		HMT.1/PT (Ex)i	HI401	HMT.1/1+2/PT (Ex)i	HI411	HMT.1/2+2/PT (Ex)i	HI421
		PTC/1/02 poles	PTC0102	PTC/1/02 poles	PTC0102	PTC/1/02 poles	PTC0102
		PTC/1/03 poles	PTC0103	PTC/1/03 poles	PTC0103	PTC/1/03 poles	PTC0103
		PTC/1/05 poles	PTC0105	PTC/1/05 poles	PTC0105	PTC/1/05 poles	PTC0105
		PTC/1/10 poles	PTC0110	PTC/1/10 poles	PTC0110	PTC/1/10 poles	PTC0110
		PTC/1/00 (50 poles)	PTC0100	PTC/1/00 (50 poles)	PTC0100	PTC/1/00 (50 poles)	PTC0100
		17,5			17,5		
Rated current carrying capacity of jumper (A)		PTC/SP	PTC0990	PTC/SP	PTC0990	PTC/SP	PTC0990
Cross-connection identification strip (100 mm)	green	-		-		-	
Multiple common bar	250 mm	-		-		-	
Shunting screw and sleeve		-		-		-	
Coloured partition	red, green, white	DFH/1	DH01..	DFH/2	DH02..	DFH/3	DH03..
Cross connection barrier	red	DFM/500	DF500	DFM/500	DF500	DFM/500	DF500
Test plug socket		-		-		-	
Test plug		-		-		-	
Modular test plug		SDH/4-SDH/4P	DH004-DH04P	SDH/4-SDH/4P	DH004-DH04P	SDH/4-SDH/4P	DH004-DH04P
End section for modular test plug		SH4/PT	DH401	SH4/PT	DH401	SH4/PT	DH401
Numbering strip		SHZ/1	SH004	SHZ/1	SH004	SHZ/1	SH004
Screwdriver for the activation of the spring		CCH/2,5-4	CCH02	CCH/2,5-4	CCH02	CCH/2,5-4	CCH02
Warning plate	on adjacent terminal blocks	-		-		-	
Marking tag	printed or blank	SHZ/1	SH004	SHZ/1	SH004	SHZ/1	SH004
End bracket		BTU for PR/DIN and PR/3	BT005	BTU for PR/DIN and PR/3	BT005	BTU for PR/DIN and PR/3	BT005
		BTO	BT007	BTO	BT007	BTO	BT007
		BT/3 for PR/3 only	BT003	BT/3 for PR/3 only	BT003	BT/3 for PR/3 only	BT003
Mounting rail according to IEC 60715 Std.		-		-		-	
		PR/3/AC of steel	PR003	PR/3/AC of steel	PR003	PR/3/AC of steel	PR003
		PR/3/AS same with slots	PR005	PR/3/AS same with slots	PR005	PR/3/AS same with slots	PR005

HMM Series

with polyamide insulating body

- UL94V-0
- mounting onto PR/3 type rails according to IEC 60715 Std., "TH/35" type
- available in standard (grey RAL 7042 and beige RAL 1001 colours) or (Ex)i "intrinsic safety" circuits (blue RAL 5015 colour) versions



PTC jumper configurations					
SINGLE OR PARALLEL EXTENDING	POLE SKIPPING	ADJACENT WITHOUT BARRIER	ADJACENT WITH BARRIER	STAGGERED MODE	PARALLEL SKIPPING
Insulation voltage in the above configurations (V)					
630	630		320	630	630

The /GR tag indicates the grey colour version.

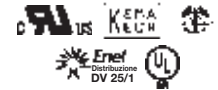
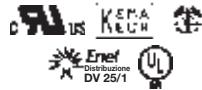
grey version	
(Ex)i version	
TECHNICAL CHARACTERISTICS	
function / type	
rated cross-section (mm ²)	
connecting capacity	
flexible (mm ²)	
rigid (mm ²)	
max. flexible with ferrule (mm ²)-ferrule type	
rated voltage / rated current / gauge	conf. to IEC 60947-7-1
rated voltage / rated current / AWG	UL
rated impulse withstand voltage / pollution degree	
insulation stripping length (mm)	
height / width / thickness	TH/35 7,5 mm
height / width / thickness	TH/35 15 mm
height / width / thickness	G32

HMM.2/GR	
Cat. No.	HM500GR
HMM.2 (Ex)i	
Cat. No.	HI500
TECHNICAL CHARACTERISTICS	
feed-through	
2,5	
0,2 ÷ 4	
0,2 ÷ 4	
2,5 - WP25/14	
800 V / 24 A / A3	
600 V / 20 A / 24-12 AWG	
8 KV / 3	
10	
41 / 50 / 5,2	
49 / 50 / 5,2	
-	

HMM.2/1+2/GR	
Cat. No.	HM510GR
HMM.2/1+2 (Ex)i	
Cat. No.	HI510
TECHNICAL CHARACTERISTICS	
feed-through, 1 input and 2 outputs	
2,5	
0,2 ÷ 4	
0,2 ÷ 4	
2,5 - WP25/14	
800 V / 24 A / A3	
600 V / 20 A / 24-12 AWG	
8 KV / 3	
10	
41 / 66 / 5,2	
49 / 66 / 5,2	
-	

HMM.2/2+2/GR	
Cat. No.	HM520GR
HMM.2/2+2 (Ex)i	
Cat. No.	HI520
TECHNICAL CHARACTERISTICS	
feed-through, 2 inputs and 2 outputs	
2,5	
0,2 ÷ 4	
0,2 ÷ 4	
2,5 - WP25/14	
800 V / 24 A / A3	
600 V / 20 A / 24-12 AWG	
8 KV / 3	
10	
41 / 82 / 5,2	
49 / 82 / 5,2	
-	

APPROVALS



ACCESSORIES	
End sections	grey blue
Permanent cross connection (intrinsically IPXXB protected once mounted)	
Rated current carrying capacity of jumper (A)	
Cross-connection identification strip (100 mm)	green
Multiple common bar	250 mm
Shunting screw and sleeve	
Coloured partition	red, green, white
Cross connection barrier	red
Test plug socket	
Test plug	
Modular test plug	
End section for modular test plug	
Numbering strip	
Screwdriver for the activation of the spring	
Warning plate	on adjacent terminal blocks
Marking tag	printed or blank
End bracket	
Mounting rail according to IEC 60715 Std.	

Type	Cat. No.
HMT.2/PT/GR	HM501GR
HMT.2/PT (Ex)i	HI501
PTC/03/02 poles	PTC0302
PTC/03/03 poles	PTC0303
PTC/03/05 poles	PTC0305
PTC/03/10 poles	PTC0310
PTC/03/00 (47 poles)	PTC0300
24	
PTC/SP	PTC0990
-	
DFH/1	DH01..
-	
SDD/1	DD001
SDH/5	DH005
SH5/PT	DH501
CNU/8/51	NU0851
CCH/2,5-4	CCH02
-	
CNU/8/51	NU0851
BTU for PR/DIN and PR/3	BT005
BTO	BT007
BT/3 for PR/3 only	BT003
-	
PR/3/AC of steel	PR003
PR/3/AS same with slots	PR005

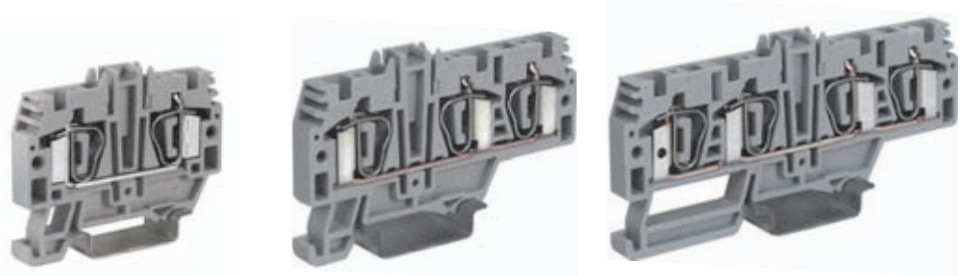
Type	Cat. No.
HMT.2/1+2/PT/GR	HM511GR
HMT.2/1+2/PT (Ex)i	HI511
PTC/03/02 poles	PTC0302
PTC/03/03 poles	PTC0303
PTC/03/05 poles	PTC0305
PTC/03/10 poles	PTC0310
PTC/03/00 (47 poles)	PTC0300
24	
PTC/SP	PTC0990
-	
DFH/2	DH02..
-	
SDD/1	DD001
SDH/5	DH005
SH5/PT	DH501
CNU/8/51	NU0851
CCH/2,5-4	CCH02
-	
CNU/8/51	NU0851
BTU for PR/DIN and PR/3	BT005
BTO	BT007
BT/3 for PR/3 only	BT003
-	
PR/3/AC of steel	PR003
PR/3/AS same with slots	PR005

Type	Cat. No.
HMT.2/2+2/PT/GR	HM521GR
HMT.2/2+2/PT (Ex)i	HI521
PTC/03/02 poles	PTC0302
PTC/03/03 poles	PTC0303
PTC/03/05 poles	PTC0305
PTC/03/10 poles	PTC0310
PTC/03/00 (47 poles)	PTC0300
24	
PTC/SP	PTC0990
-	
DFH/3	DH03..
-	
SDD/1	DD001
SDH/5	DH005
SH5/PT	DH501
CNU/8/51	NU0851
CCH/2,5-4	CCH02
-	
CNU/8/51	NU0851
BTU for PR/DIN and PR/3	BT005
BTO	BT007
BT/3 for PR/3 only	BT003
-	
PR/3/AC of steel	PR003
PR/3/AS same with slots	PR005

HMM Series

with polyamide insulating body

- UL94V-0
- mounting onto PR/3 type rails according to IEC 60715 Std., "TH/35" type
- available in standard (grey RAL 7042 colour) or (Ex)i "intrinsic safety" circuits (blue RAL 5015 colour) version



PTC jumper configurations					
SINGLE OR PARALLEL EXTENDING	POLE SKIPPING	ADJACENT WITHOUT BARRIER	ADJACENT WITH BARRIER	STAGGERED MODE	PARALLEL SKIPPING

Terminal block	Jumper	Insulation voltage in the above configurations (V)				
HMM.4	PTC/5	500	500	500	500	500

The /GR tag indicates the grey colour version.

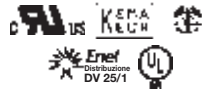
grey version	
(Ex)i version	
TECHNICAL CHARACTERISTICS	
function / type	
rated cross-section (mm ²)	
connecting capacity	
flexible (mm ²)	
rigid (mm ²)	
max. flexible with ferrule (mm ²)-ferrule type	
rated voltage / rated current / gauge	conf. to IEC 60947-7-1
rated impulse withstand voltage / pollution degree	UL
insulation stripping length (mm)	
height / width / thickness	TH/35 7,5 mm
height / width / thickness	TH/35 15 mm
height / width / thickness	G32

HMM.4/GR	HMM.4/1+2/GR	HMM.4/2+2/GR
Cat. No. HM250GR	Cat. No. HM210GR	Cat. No. HM220GR
HMM.4 (Ex)i	HMM.4/1+2 (Ex)i	HMM.4/2+2 (Ex)i
Cat. No. HI250	Cat. No. HI210	Cat. No. HI220
feed-through	feed-through 1 input and 2 outputs	feed-through 2 inputs and 2 outputs
4	4	4
0,2 ÷ 6	0,2 ÷ 6	0,2 ÷ 6
0,2 ÷ 6	0,2 ÷ 6	0,2 ÷ 6
4 - WP40/16	4 - WP40/16	4 - WP40/16
800 V / 32 A / A4	800 V / 32 A / A4	800 V / 32 A / A4
600 V / 30 A / 24-10 AWG	-	-
8 KV / 3	8 KV / 3	8 KV / 3
12	12	12
45 / 58 / 6,2	45 / 78 / 6,2	45 / 98 / 6,2
52 / 58 / 6,2	52 / 78 / 6,2	52 / 98 / 6,2
-	-	-

HMM.4/1+2/GR	HMM.4/2+2/GR
Cat. No. HM210GR	Cat. No. HM220GR
HMM.4/1+2 (Ex)i	HMM.4/2+2 (Ex)i
Cat. No. HI210	Cat. No. HI220
feed-through 1 input and 2 outputs	feed-through 2 inputs and 2 outputs
4	4
0,2 ÷ 6	0,2 ÷ 6
0,2 ÷ 6	0,2 ÷ 6
4 - WP40/16	4 - WP40/16
800 V / 32 A / A4	800 V / 32 A / A4
-	-
8 KV / 3	8 KV / 3
12	12
45 / 78 / 6,2	45 / 98 / 6,2
52 / 78 / 6,2	52 / 98 / 6,2
-	-

HMM.4/2+2/GR	HMM.4/2+2 (Ex)i
Cat. No. HM220GR	Cat. No. HI220
feed-through 2 inputs and 2 outputs	feed-through 2 inputs and 2 outputs
4	4
0,2 ÷ 6	0,2 ÷ 6
0,2 ÷ 6	0,2 ÷ 6
4 - WP40/16	4 - WP40/16
800 V / 32 A / A4	800 V / 32 A / A4
-	-
8 KV / 3	8 KV / 3
12	12
45 / 98 / 6,2	45 / 98 / 6,2
52 / 98 / 6,2	52 / 98 / 6,2
-	-

APPROVALS



ACCESSORIES	
End sections	grey blue
Permanent cross connection (intrinsically IPXXB protected once mounted)	
Rated current carrying capacity of jumper (A)	
Cross-connection identification strip (100 mm)	green
Multiple common bar	250 mm
Shunting screw and sleeve	
Coloured partition	red, green, white
Cross connection barrier	red
Test plug socket	
Test plug	
Modular test plug	
End section for modular test plug	
Numbering strip	
Screwdriver for the activation of the spring	
Warning plate	on adjacent terminal blocks
Marking tag	printed or blank
End bracket	
Mounting rail according to IEC 60715 Std.	

Type	Cat. No.
HMT.4/PT/GR	HM251GR
HMT.4/PT (Ex)i	HI251
PTC/5/02 poles	PTC0502
PTC/5/03 poles	PTC0503
PTC/5/05 poles	PTC0505
PTC/5/10 poles	PTC0510
PTC/5/00 (40 poles)	PTC0500
32	
PTC/SP	PTC0990
-	
DFH/1	DH01..
-	
SDD/1	DD001
SDH/6	DH006
SH6/PT	DH601
CNU/8/61	NU0861
CCH/2,5-4	CCH02
-	
CNU/8/61	NU0861
BTU for PR/DIN and PR/3	BT005
BTO	BT007
BT/3 for PR/3 only	BT003
-	
PR/3/AC of steel	PR003
PR/3/AS same with slots	PR005

Type	Cat. No.
HMT.4/1+2/PT/GR	HM211GR
HMT.4/1+2/PT (Ex)i	HI211
PTC/5/02 poles	PTC0502
PTC/5/03 poles	PTC0503
PTC/5/05 poles	PTC0505
PTC/5/10 poles	PTC0510
PTC/5/00 (40 poles)	PTC0500
32	
PTC/SP	PTC0990
-	
DFH/4	DH04..
-	
SDD/1	DD001
SDH/6	DH006
SH6/PT	DH601
CNU/8/61	NU0861
CCH/2,5-4	CCH02
-	
CNU/8/61	NU0861
BTU for PR/DIN and PR/3	BT005
BTO	BT007
BT/3 for PR/3 only	BT003
-	
PR/3/AC of steel	PR003
PR/3/AS same with slots	PR005

Type	Cat. No.
HMT.4/2+2/PT/GR	HM221GR
HMT.4/2+2/PT (Ex)i	HI221
PTC/5/02 poles	PTC0502
PTC/5/03 poles	PTC0503
PTC/5/05 poles	PTC0505
PTC/5/10 poles	PTC0510
PTC/5/00 (40 poles)	PTC0500
32	
PTC/SP	PTC0990
-	
DFH/4	DH04..
-	
SDD/1	DD001
SDH/6	DH006
SH6/PT	DH601
CNU/8/61	NU0861
CCH/2,5-4	CCH02
-	
CNU/8/61	NU0861
BTU for PR/DIN and PR/3	BT005
BTO	BT007
BT/3 for PR/3 only	BT003
-	
PR/3/AC of steel	PR003
PR/3/AS same with slots	PR005