

PS38H Safety Hinges



- Multiple integrated circuit
- Compact dimensions
- Minimum width of installation: 30mm
- Protection degree IP67
- Safety switch integrated
- Conforms to IEC / EN Standards, ISO 13849-1 (SIL 3, PLe)
- Stainless steel components
- Contact configurations:
2NO + 2NC / 1NO + 3NC
-

Approvals



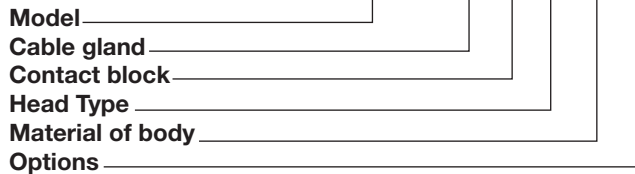
Product Description

PS38H is a series of compact safety hinges with flexible mounting configurations-top axial output with cable or connector and back output. The internal switch is composed of 4 slow action double break contacts (Zb type to IEC EN

60947-5-1) guaranteed for all NC contacts. The four contacts are available in two configurations - T22 (2NO + 2NC) or T13 (1NO + 3NC). All the circuits have low contact resistance thanks to the self-cleaning action of the silver paste.

Ordering Key

PS38H-IT2205-T01



Type Selection

Model	Cable gland	Contact block	Head type	Material body	Options
PS38H	I: 8 pole connector (cable with connector not included, and not available from Carlo Gavazzi)	T22: 2NO + 2NC non overlapping slow action	05: 90° Adjustable	T: Thermoplastic body and thermoplastic head	01: Top axial output
Safety hinge	C: 2m. cable with 8 conductors (pre-wired)	T13: 1NO + 3NC non overlapping slow action	-	-	02: Back output

How to Order

Code	Description	Connection	NO Contacts	NC Contacts
PS38H-IT2205-T01	Top axial output	M12 Connector	2	2
PS38H-CT2205-T01	Top axial output	2m UL cable	2	2
PS38H-CT2205-T02	Back axial output	2m UL cable	2	2
PS38H-IT1305-T01	Top axial output	M12 Connector	1	3
PS38H-CT1305-T01	Top axial output	2m UL cable	1	3
PS38H-CT1305-T02	Back axial output	2m UL cable	1	3

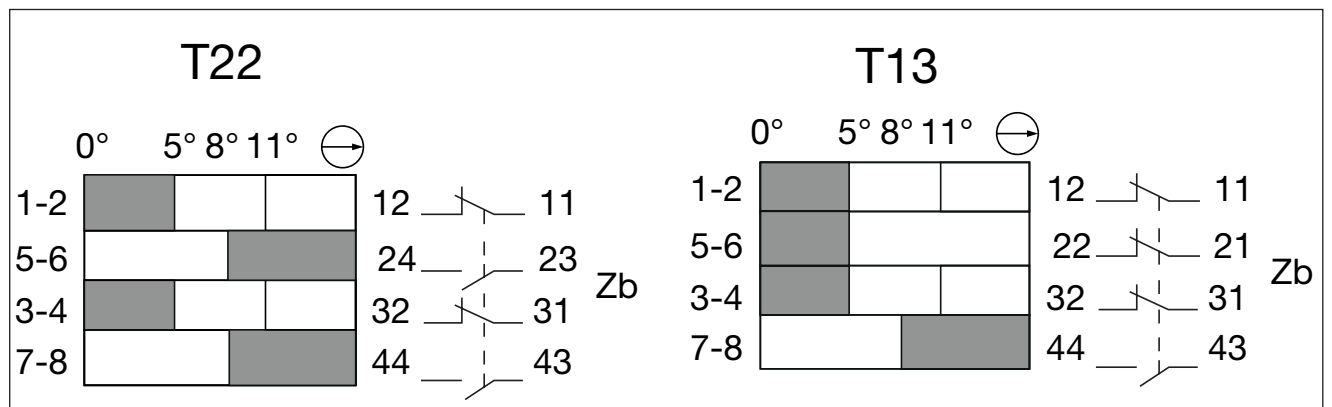
General Data

Standard	Devices conform with international IEC 947-5-1 and European EN 60947-5-1 standards.	Mechanical durability	1.000.000 operations
Air temperature During operation For storage	-20° to +80°C -20° to +80°C	Operational frequency	1.200 cycles/h
Protection degree	IP67	B10d (n. operations)	2.000.000 cycles
		Positive opening operation	(according to IEC 947-5-1) All NC contacts have positive opening activation (min. 0,5Nm.)

Electrical Data

Rated insulation voltage Ui According to IEC 947-1 Pollution degree 3 Cable Connector	400V 30V	Rated operational current 24V - 50/60 Hz 120V - 50/60 Hz 250V - 50/60 Hz 400V - 50/60 Hz 24V - d.c. 125V - d.c. 250V - d.c.	Cable 4A 4A 4A 4A 2A 0.4A 0.3A	Connector - - - - 2A - -
Protection against electric shock	Class II			
Thermal current Ith Cable Connector	4A 2A			

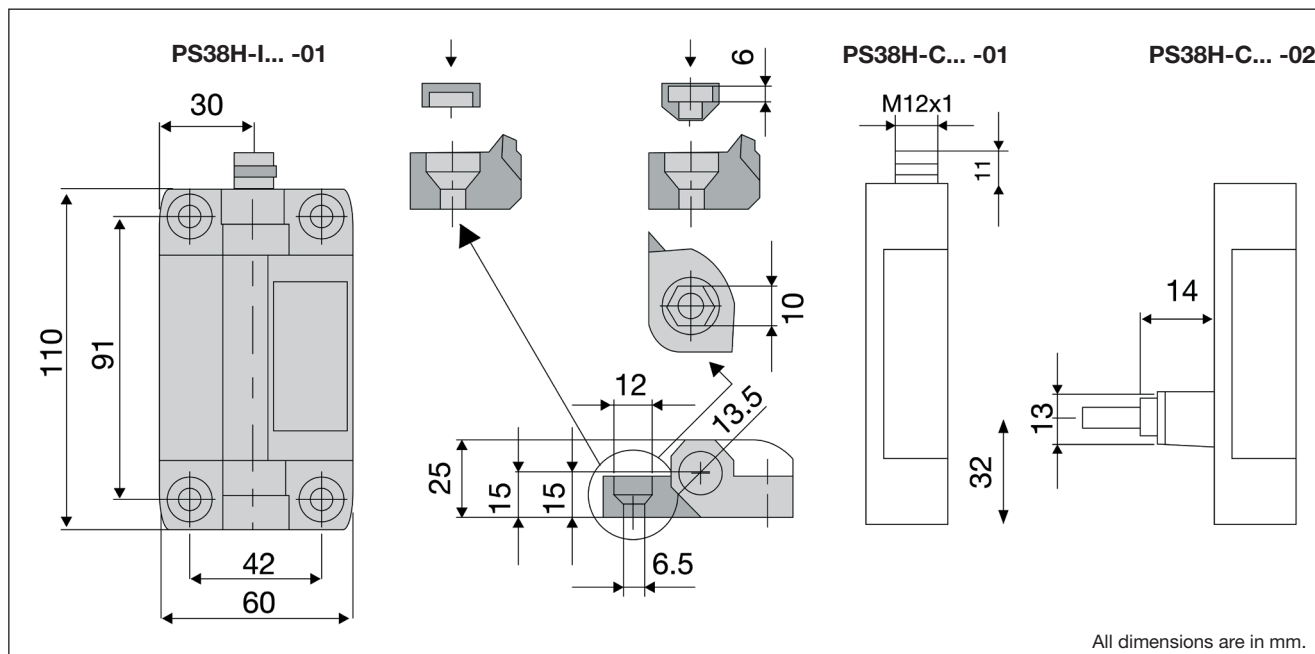
Diagram of Contacts



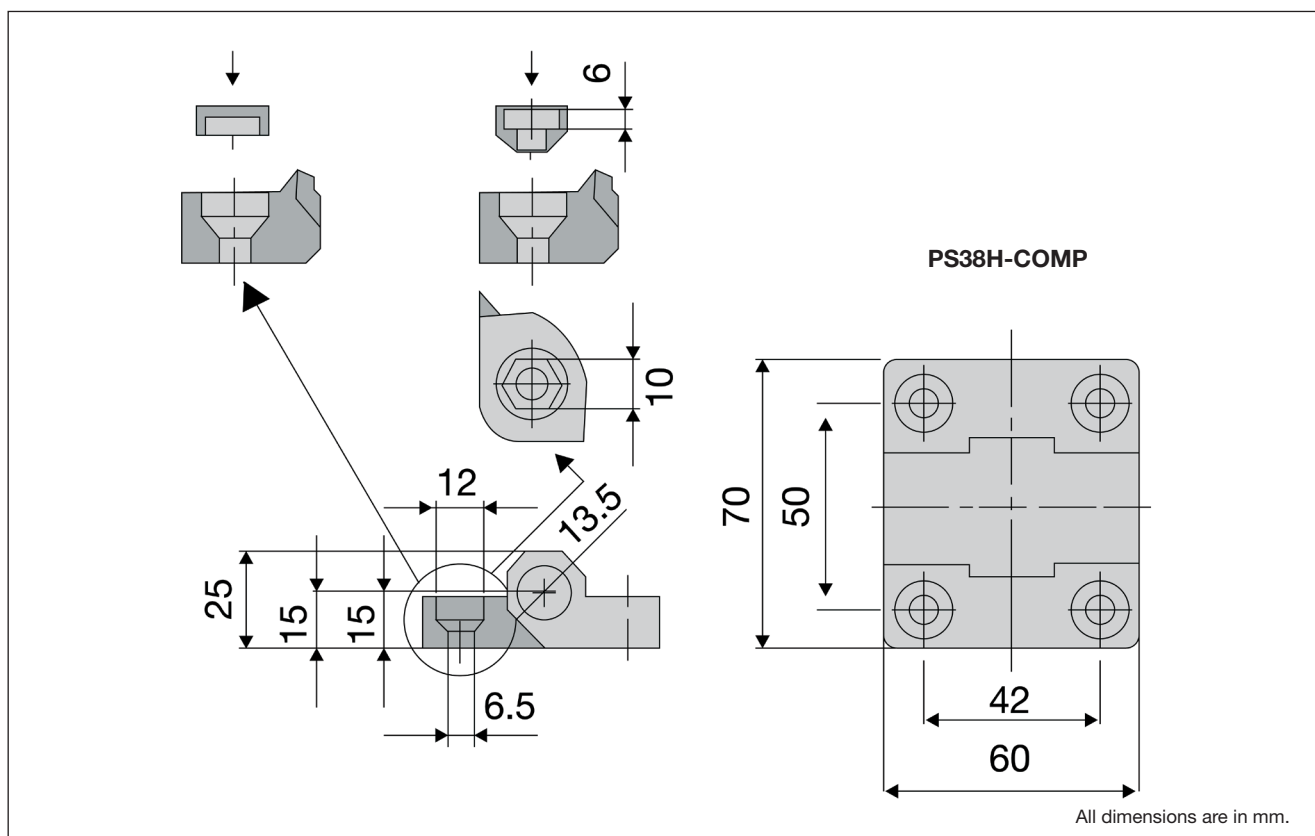
NOTE

As shown in the diagram (see above), the angle of action is set at the factory to 5° (opening of the NC contacts, to be verified according to EN294). This angle and, in consequence, also the angle of the closure of the NO contact and positive opening of the NC contacts can be adjusted by the installer; in the case of doors of considerable size, the operating angle can be reduced down to 1°, by using a screwdriver on the adjustment screw.

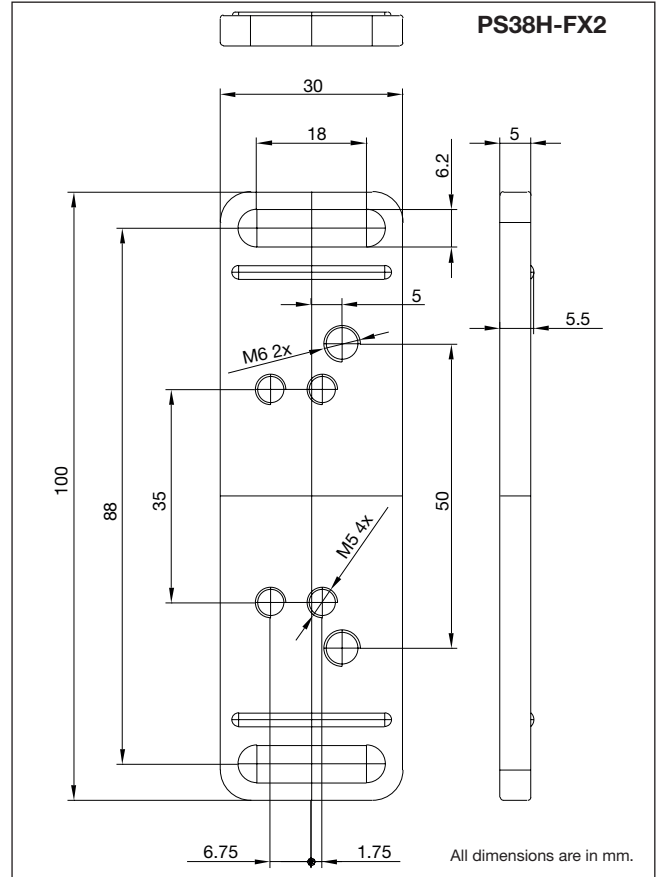
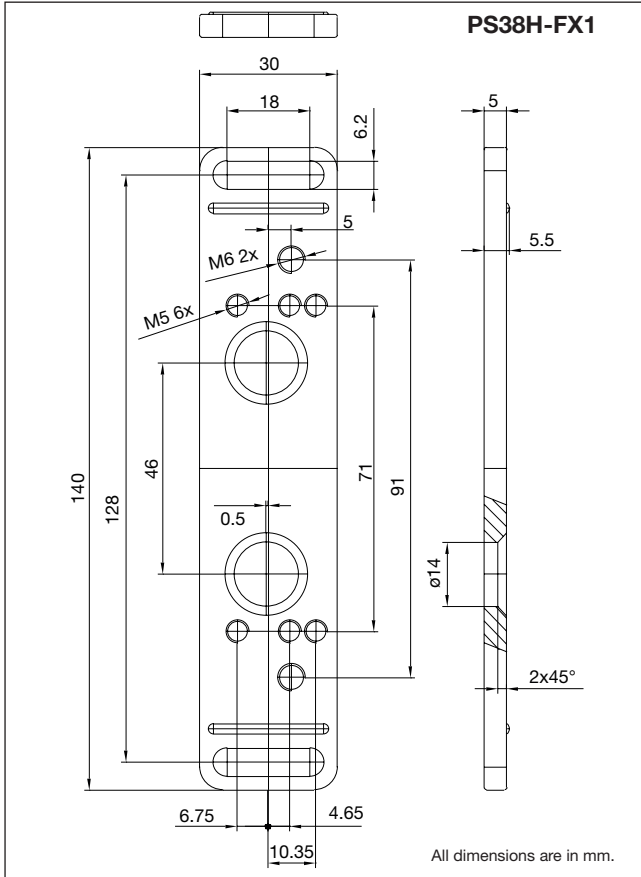
Dimensions



Dimensions



Accessories



Accessories

Code	Description
PS38H-COMP	Complementary mechanical hinge
PS38H-FX1	Mounting bracket, pair of supports for safety hinge PS38H (fixing screws for switch included)
PS38H-FX2	Mounting bracket, pair of supports for complementary hinges PS38H-COMP (fixing screws for switch included)