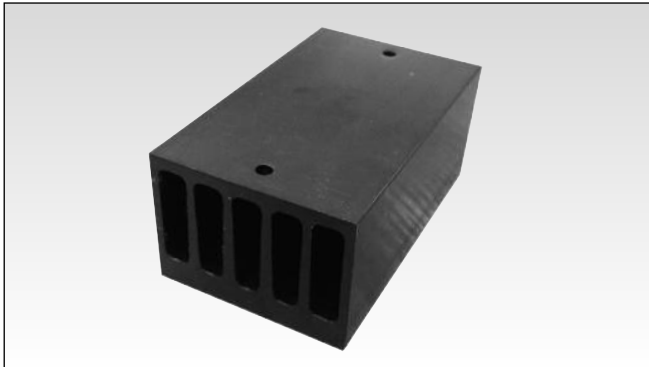


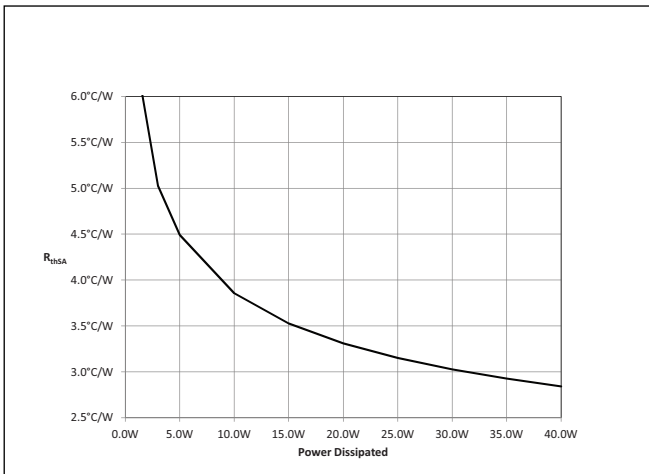
# Solid State Relays Accessories, Heatsinks Types RHS38AD, RHS38ARFD



- 2.85 °C/W thermal resistance
- Suitable for mounting of 1-phase SSRs
- Panel or Thru wall mounting<sup>1</sup>
- Dimensions W x H x D: 46 x 76 x 33 mm
- RoHS compliant

1. Thru wall mounting only for RHS38ARFD

## Thermal Resistance Curve



## Ordering Key

**RHS38AD**

Suitable only for SSRs with a mounting pitch of 47.5mm such as the RA, RD, RS, RM and RAM series

## Ordering Key

**RHS38ARFD**

Suitable only for SSRs with a mounting pitch of 30mm such as the RF1 series

## Product Description

Heatsink assembly suitable for mounting of 1x 1-phase solid state relay (SSR).

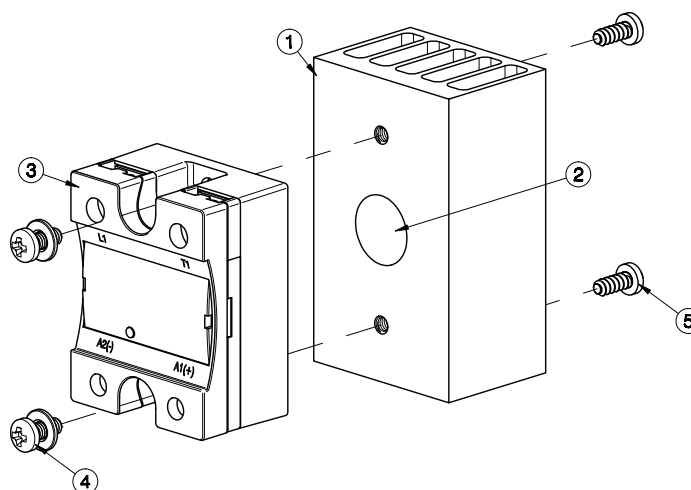
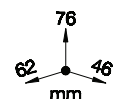
heatsink. Conditions apply. Please ask your Sales representative for further details.

Suffix H53 added to SSR part no. refers to factory mounted

## Heatsink Assembly

Components for assembly		Qty	RHS38AD
1	RHS38AD Heatsink Assembly	1	Provided
2	Thermal Compound or Pad	1	Not Provided
3	1-phase SSR 45x59mm	1	Not Provided
4	M4x15mm + Washer	2	Not Provided
5	Self Tapping Mounting Screws ST3.9	2	Not Provided

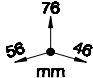
Dimensions including the SSR



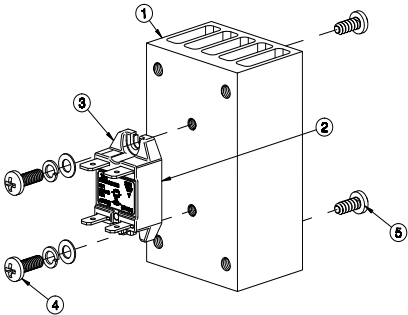
# Heatsink Assembly

Components for assembly		Qty	RHS38ARFD
1	RHS38ARFD Heatsink Assembly	1	Provided
2	Phase change thermal pad	1	Pre-attached to RF1
3	1-phase SSR 21x36mm	1	Not Provided
4	M4x15mm + Washer	2	Not Provided
5	Self Tapping Mounting Screws ST3.9 for panel mounting	2	Not Provided
5	M5 mounting Screws for thru wall mounting	4	Not Provided

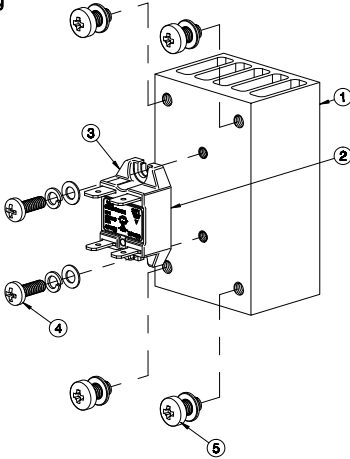
Dimensions including the SSR



**Panel mounting**



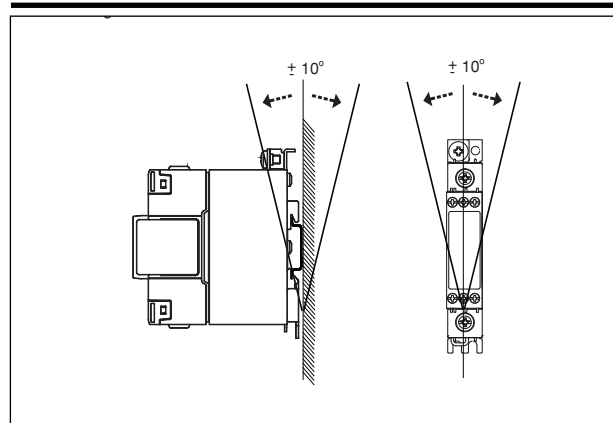
**Thru wall mounting**



## General Specifications

SSR max. mounting torque	1.5Nm (13.3 lb-in)
Weight (excl. SSR)	approx. 160g
Material	Aluminium
Finish	Black anodization
Fan mounting	Not possible

## Mounting Position



# Installation

## RHS38AD for panel mounting

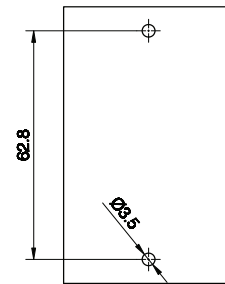
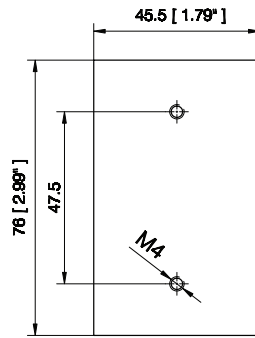
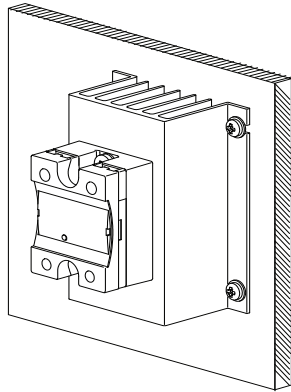


Illustration is for example only

## RHS38ARFD for panel or thru wall mounting

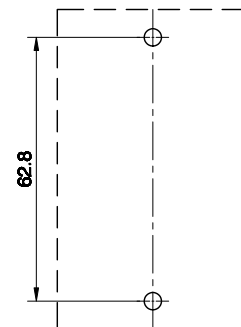
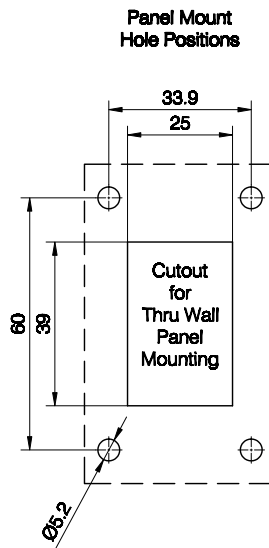
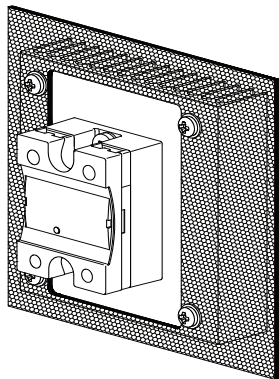
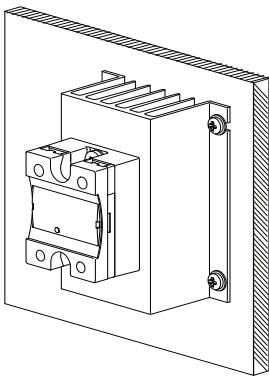


Illustration is for example only

All dimensions in mm



## Recommended Maximum Current Rating (per SSR)

Notes:

- The below recommendations are only valid when the assembly (SSR + heatsink) is mounted as shown in the mounting instructions unless otherwise indicated.
- The indicated ratings are applicable to one SSR, one pole. Please refer to the online selector tool at [www.productselection.net](http://www.productselection.net) for different load currents, surrounding temperatures or multiple units on one heatsink.
- These recommendations are applicable only with the indicated Carlo Gavazzi thermal interface material between SSR and heatsink. In case a different thermal interface is utilised these recommendation may no longer be valid.

Thermal interface = Pre-attached phase change thermal pad, **RFHT**

1x 1-phase SSR	Surrounding temperature							
	°C	20	30	40	50	60	70	80
	°F	68	86	104	122	140	158	176
<b>RF1</b>	<b>25</b>	21.5	19	16	13.5	10.5	7	3.5

Thermal interface = Thermal compound, **HTS02S**

1x 1-phase SSR	Surrounding temperature							
	°C	20	30	40	50	60	70	80
	°F	68	86	104	122	140	158	176
<b>RD..</b>	<b>1</b>	1	1	1	1	1	1	n/a
	<b>5</b>	5	5	5	5	5	4.5	n/a
<b>RA..L</b> <b>RA..T</b>	<b>10</b>	10	10	10	10	9	5.5	n/a
	<b>25</b>	18	17	15	12.5	9	5.5	n/a
<b>RA..</b>	<b>25</b>	22.5	21	18.5	15.5	12	9	n/a
	<b>50</b>	28	26	22	18.5	14.5	11	n/a
	<b>90</b>	33	31	26.5	21.5	17	12.5	n/a
	<b>110</b>	36	33.5	28.5	23.5	18.5	13.5	n/a
<b>RA60..</b>	<b>50</b>	28	26	22.5	19	15	11	n/a
<b>RA2A..*</b>	<b>25</b>	15.5	14	12	9.5	7	4.5	n/a
	<b>40</b>	17	15.5	13	10	7.5	5	n/a
	<b>25M</b>	15.5	14	12	9.5	7	4.5	n/a
	<b>40M</b>	17	15.5	13	10	7.5	5	n/a
<b>RS1A..</b>	<b>10</b>	10	10	8.5	7	5.5	4	n/a
	<b>25</b>	25	23.5	19.5	16	12	8	n/a
	<b>40</b>	27.5	25.5	21	17	12.5	8.5	n/a
<b>RS1A..E</b>	<b>25</b>	14.5	14	12	10	8.5	6.5	n/a
	<b>40</b>	16.5	15.5	13	11.5	9	6	n/a
<b>RM1A..</b> <b>RM1B..</b> <b>RM1C..</b>	<b>25</b>	25	23.5	19.5	16	12	8	n/a
	<b>50</b>	27.5	25.5	21	17	12.5	8.5	n/a
	<b>75</b>	32.5	30	25	20	15	10	n/a
	<b>100</b>	35.5	32.5	27	21.5	16	11	n/a
<b>RM1A60..</b> <b>RM1B60..</b> <b>RM1C60..</b> <b>RM1E60..</b>	<b>50</b>	28	26	22	17.5	13.5	9	n/a
<b>RAM1A..</b> <b>RAM1B..</b> <b>RM1E..</b>	<b>25</b>	25	23.5	19.5	16	12	8	4.5
	<b>50</b>	27.5	25.5	21	17	12.5	8.5	4.5
	<b>75</b>	32.5	30	25	20	15	10	5.5
	<b>100</b>	32.5	30	25	20	15	10	5.5
	<b>125</b>	35.5	32.5	27	21.5	16	11	6

\* per pole

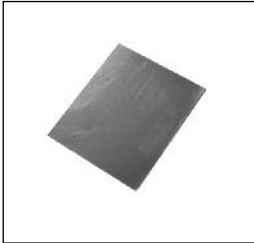
Thermal interface = Thermal pad **KK071CUT**

1x 1-phase SSR	Surrounding temperature							
	°C	20	30	40	50	60	70	80
	°F	68	86	104	122	140	158	176
<b>RD..</b>	<b>1</b>	1	1	1	1	1	1	n/a
	<b>5</b>	5	5	5	5	5	4.5	n/a
<b>RA..L</b> <b>RA..T</b>	<b>10</b>	10	10	10	10	9	5.5	n/a
	<b>25</b>	17	16	14	12	9.5	5.5	n/a
<b>RA..</b>	<b>25</b>	21.5	20.5	17.5	14.5	11.5	9	n/a
	<b>50</b>	26.5	24.5	21	17.5	14	10.5	n/a
	<b>90</b>	31	28.5	24.5	20.5	16	12	n/a
	<b>110</b>	33.5	31	26.5	22	17.5	12.5	n/a
<b>RA60..</b>	<b>50</b>	26.5	25	21.5	18	14.5	10.5	n/a
<b>RA2A..*</b>	<b>25</b>	15.5	14.5	12	9.5	7	5	n/a
	<b>40</b>	17.5	16	13	10.5	7.5	5	n/a
	<b>25M</b>	15.5	14.5	12	9.5	7	5	n/a
	<b>40M</b>	17	16	13	10.5	7.5	5	n/a
<b>RS1A..</b>	<b>10</b>	10	9.5	8	7	5.5	3.5	n/a
	<b>25</b>	23.5	21.5	18	14.5	11	7.5	n/a
	<b>40</b>	25.5	23.5	19.5	15.5	12	8	n/a
<b>RS1A..E</b>	<b>25</b>	13.5	13	11	9.5	8	6.5	n/a
	<b>40</b>	15	14	12	10.5	8.5	6	n/a
<b>RM1A..</b> <b>RM1B..</b> <b>RM1C..</b>	<b>25</b>	23.5	21.5	18	14.5	11	7.5	n/a
	<b>50</b>	25.5	23.5	19.5	15.5	12	8	n/a
	<b>75</b>	30	27.5	23	18.5	14	9.5	n/a
	<b>100</b>	32	29.5	24.5	19.5	15	10	n/a
<b>RM1A60..</b> <b>RM1B60..</b> <b>RM1C60..</b> <b>RM1E60..</b>	<b>50</b>	26	24	20.5	16.5	12.5	8.5	n/a
<b>RAM1A..</b> <b>RAM1B..</b> <b>RM1E..</b>	<b>25</b>	23.5	21.5	18	14.5	11	7.5	4.5
	<b>50</b>	25.5	23.5	19.5	15.5	12	8	4.5
	<b>75</b>	30	27.5	23	18.5	14	9.5	5
	<b>100</b>	30	27.5	23	18.5	14	9.5	5
	<b>125</b>	32	29.5	24.5	19.5	15	10	5.5

## Accessories

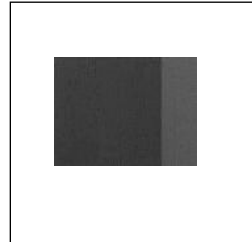
---

### Thermal Pads



- Ordering key: **KK071CUT**
- Packing qty. 50 pcs.
- Suitable for 1-phase SSRs
- Dimensions: 35 x 43mm

### Phase Change Thermal Pad



- Ordering key: **RFHT**
- Packing qty. 10 pcs.
- Suitable for RF1 series
- Dimensions: 19 x 17mm

### Thermal Compound



- Ordering key: **HTS02S**
- 2ml syringe of silicone based thermal compound

### Screw Kits



- Ordering key: **SRWKITM4X15MM**
- M4x15mm + washers
- Packing qty. 20 pcs.