

End brackets

BTU

Cat. No. **BT005**

Universal end bracket, suitable for rails according to either IEC 60715 type "G32" or IEC 60715/TH35 (types PR/DIN and PR/3); can be mounted directly in the desired position and does not require screw fixing.

- of black polyamide
- thickness: 8 mm

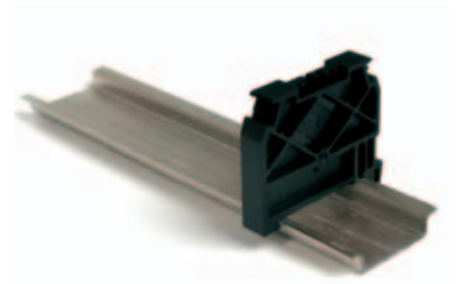


BTO

Cat. No. **BT007**

End bracket, suitable for rails according to IEC 60715/TH 35 (types PR/3); can be mounted directly in the desired position and does not require screw fixing. Especially suitable for fixing screw, high type.

- of black polyamide
- thickness: 8 mm

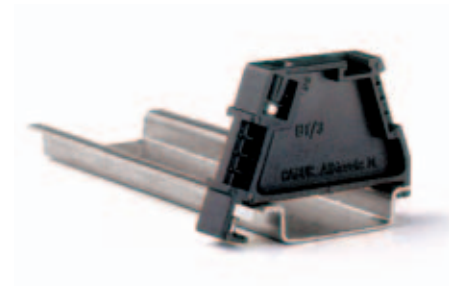


BT/3

Cat. No. **BT003**

To be mounted on rails according to IEC 60715/TH35 Std. (type PR/3)

- of black polyamide
- thickness: 8 mm



BT/2

Cat. No. **BT006**

To be mounted on rails according to IEC 60715/TH35 Std. (type PR/2)

- of black polyamide
- thickness: 8 mm

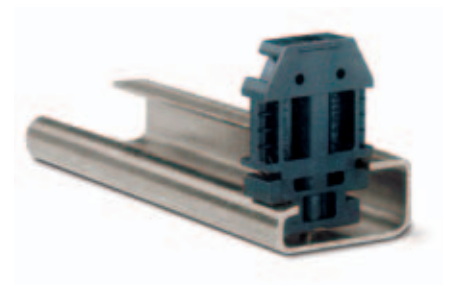


BT/DIN/PO

Cat. No. **BT001**

To be mounted on rails according to IEC 60715 Std. type "G32" (type PR/DIN)

- of black polyamide
- thickness: 8 mm



CDA/BT

Cat. No. **CD003**

To be mounted on rails according to IEC 60715 Std. type "G32" (type PR/DIN)

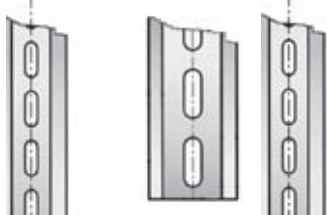
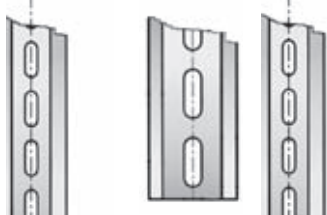
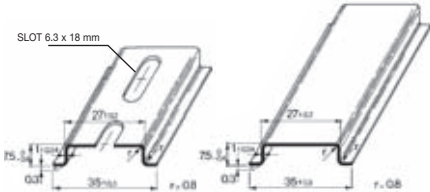
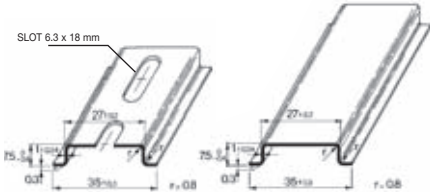
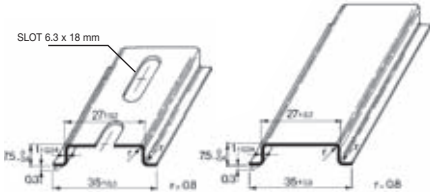
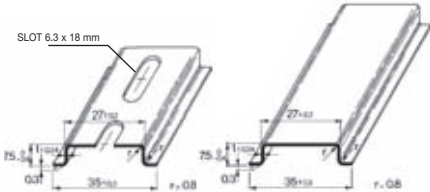
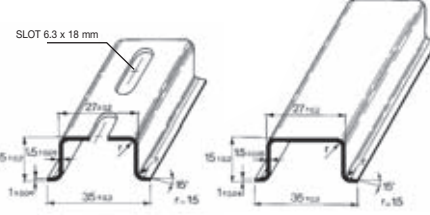
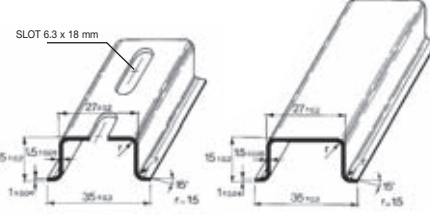
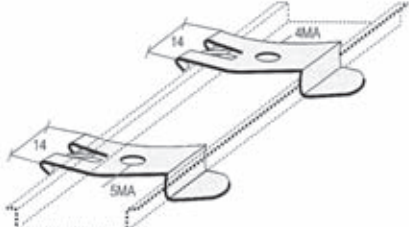
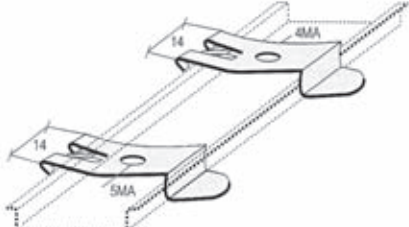
- in brass (particularly suitable for rail assemblies formed by terminal blocks of larger dimensions, such as GPM, GPA, CDA and ACB)
- thickness: 11 mm



Mounting rails

- according to IEC 60715/TH35 - 7,5
- according to IEC 60715/TH35 - 15
- supports for TH/35 type rail



DESCRIPTION	TYPE/CAT. NO.	IMAGES
IEC 60715/TH35 - 7.5 rail of passivated steel	PR/3/AC Cat. No. PR003	
IEC 60715/TH35 - 7.5 rail of white zinc-plated steel "SENDZMIR" system	PR/3/AC/ZB Cat. No. PR903	
IEC 60715/TH35 - 7.5 rail of passivated steel with slots	PR/3/AS Cat. No. PR005	
IEC 60715/TH35 - 7.5 rail of white zinc-plated steel "SENDZMIR" system with slots	PR/3/AS/ZB Cat. No. PR905	
IEC 60715/TH35 - 15 rail of passivated steel	PR/3/PP Cat. No. PR007	
IEC 60715/TH35 - 15 rail of white zinc-plated steel "SENDZMIR" system	PR/3/PP/ZB Cat. No. PR907	
IEC 60715/TH35 - 15 rail of passivated steel with slots	PR/3/PA Cat. No. PR006	
IEC 60715/TH35 - 15 rail of white zinc-plated steel "SENDZMIR" system with slots	PR/3/PA/ZB Cat. No. PR906	
Support for IEC 60715/TH35 rail of nickel plated steel and with rapid mounting system 4 MA	ACI121017 Cat. No. Z121017	
Support for IEC 60715/TH35 rail of nickel plated steel and with rapid mounting system 5 MA	ACI121019 Cat. No. Z121019	

Mounting rails

- according to IEC 60715 “G32” type rail
- according to IEC 60715/TH15 - 5,5



DESCRIPTION	TYPE/CAT. NO.	IMAGES
IEC 60715 “G32” type rail of passivated steel	PR/DIN/AC Cat. No. PR001	
IEC 60715 “G32” type rail of white zinc-plated steel “SENDZMIR” system	PR/DIN/AC/ZB Cat. No. PR901	
IEC 60715 “G32” type rail of passivated steel with slots	PR/DIN/AS Cat. No. PR004	
IEC 60715 “G32” type rail of white zinc-plated steel “SENDZMIR” system with slots	PR/DIN/AS/ZB Cat. No. PR904	
IEC 60715 “G32” type rail of aluminium	PR/DIN/AL Cat. No. PR002	
IEC 60715/TH15 – 5.5 rail of passivated steel	PR/2/AC Cat. No. PR009	
IEC 60715/TH15 – 5.5 rail of white zinc-plated steel “SENDZMIR” system	PR/2/AC/ZB Cat. No. PR909	
IEC 60715/TH15 – 5.5 rail of passivated steel with slots	PR/2/AS Cat. No. PR010	
IEC 60715/TH15 – 5.5 rail of white zinc-plated steel “SENDZMIR” system with slots	PR/2/AS/ZB Cat. No. PR910	

Accessories for mounting rails

- inclined bracket



DESCRIPTION	TYPE/CAT. NO.	IMAGES
<p>Zinc-plated inclined bracket 6 x 6 mm copper busbar holder, with possibility to mount an earth collecting busbar alongside the whole length of the terminal board</p>	<p>ACI121116 Cat. No. Z121116</p>	
<p>Zinc-plated inclined bracket 6 x 6 mm copper busbar holder, with possibility to mount an earth collecting busbar alongside the whole length of the terminal board</p>	<p>ACI121301 Cat. No. Z121301</p>	
<p>Zinc-plated inclined bracket "2" M5 standard busbar holder, with 2 screw fixing</p>	<p>ACI121311 Cat. No. Z121311</p>	
<p>Zinc-plated inclined bracket "2" M6 standard busbar holder, with 2 screw fixing</p>	<p>ACI121314 Cat. No. Z121314</p>	
<p>22°30' inclined bracket "6" M6 standard busbar holder, with 1 screw fixing</p>	<p>ACI121415 Cat. No. Z121415</p>	
<p>45° inclined bracket "1" M6 standard busbar holder, with 1 screw fixing</p>	<p>ACI121228 Cat. No. Z121228</p>	

Accessories for mounting rails

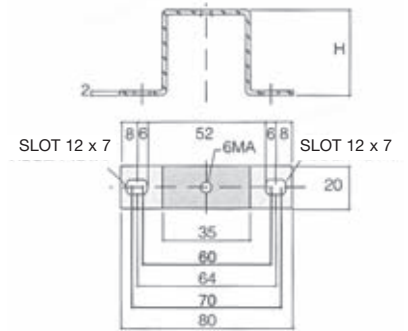
- inclined zinc plated rail brackets, suitable for mounting rail fixing - M6 threaded hole



DESCRIPTION	TYPE/CAT. NO.	IMAGES
<p>Inclined rail holder, standard H = 58 mm</p>	<p>ACI121316 Cat. No. Z121316</p>	
<p>Inclined rail holder, standard H = 68 mm</p>	<p>ACI121317 Cat. No. Z121317</p>	
<p>Inclined rail holder, standard H = 78 mm</p>	<p>ACI121318 Cat. No. Z121318</p>	
<p>Inclined rail holder, standard H = 88 mm</p>	<p>ACI121319 Cat. No. Z121319</p>	
<p>Inclined rail holder, standard H = 98 mm</p>	<p>ACI121410 Cat. No. Z121410</p>	

Accessories for mounting rails

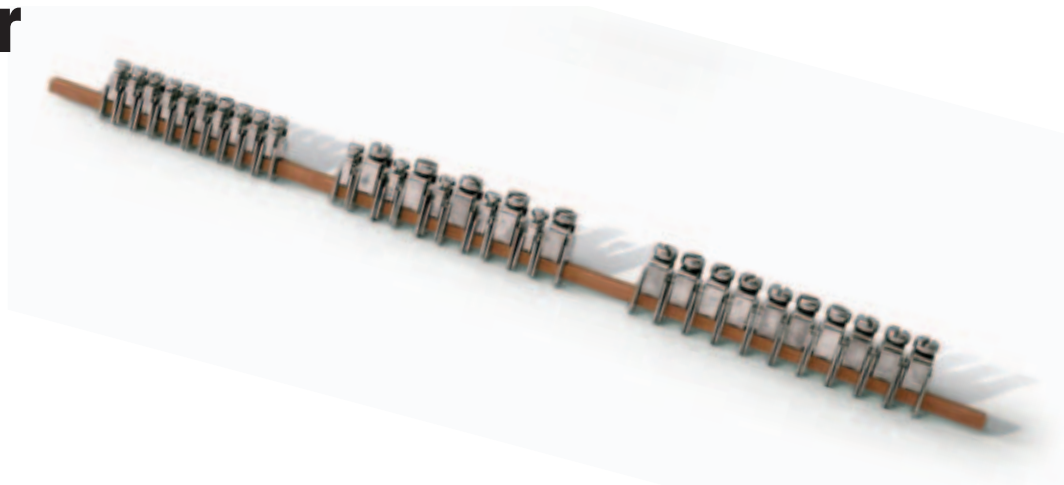
- flat zinc plated brackets, suitable for mounting rail fixing - M6 threaded hole



Fixing distance between centers, with 6MA screw, from 60 to 70 mm

DESCRIPTION	TYPE/CAT. NO.	IMAGES
Flat rail support, standard H = 20 mm	ACI121213 Cat. No. Z121213	
Flat rail support, standard H = 25 mm	ACI121214 Cat. No. Z121214	
Flat rail support, standard H = 30 mm	ACI121215 Cat. No. Z121215	
Flat rail support, standard H = 40 mm	ACI121216 Cat. No. Z121216	
Flat rail support, standard H = 50 mm	ACI121217 Cat. No. Z121217	
Flat rail support, standard H = 70 mm	ACI121218 Cat. No. Z121218	
Flat rail support, standard H = 90 mm	ACI121219 Cat. No. Z121219	

Accessories for mounting rails



DESCRIPTION	TYPE / CAT. NO.	IMAGES
6 x 6 mm copper busbar L = 2 m suited for the the mounting of terminals for the grounding of electrical cables	ACI121123 Cat. No. Z121123	
6 x 6 mm copper busbar blocking terminal with 6 MA x 12 mm screw	ACI121118 Cat. No. Z121118	
Terminal with saddle for 6 x 6 mm copper busbar cable cross-section from 0.5 to 16 mm ²	ACI121119 Cat. No. Z121119	
Terminal with saddle for 6 x 6 mm copper busbar cable cross-section from 4 to 35 mm ²	ACI121121 Cat. No. Z121121	
Special hexagon slot 6 MA x 12 mm screw	ACI121026 Cat. No. Z121026	
Special hexagon slot 5 MA x 10 mm screw	ACI121421 Cat. No. Z121421	
4 MA nut for rapid mounting onto 32 x 9 x 15 mm steel rails	ACI121211 Cat. No. Z121211	
5 MA nut for rapid mounting onto 32 x 9 x 15 mm steel rails	ACI121212 Cat. No. Z121212	
6 x 6 mm copper busbar blocking terminal with 6 MA x 25 mm screw	ACI121221 Cat. No. Z121221	
Inclined copper busbar support with 6 MA x 10 mm screw and 6 MA nut	ACI121307 Cat. No. Z121307	