

Palazzoli

General
Catalogue



2019/2020

Palazzoli



CHIAREZZA DELLA FUNZIONE
SEMPLICITÀ DI PROGETTO
QUALITÀ DELLA MANIFATTURA

CLARITY OF FUNCTION
PROJECT SIMPLICITY
QUALITY OF MANUFACTURE





The industrial low voltage interlocked socket-outlets of the TAIS series are a range of products made in Palazzoli thermosetting GRP for heavy-duty applications, that comply with the IEC/EN 60309-1, IEC/EN 60309-2 and IEC/EN 60309-4 standards.

The system includes versions from 16A to 125A, with or without fuses, with MCB or with DIN rail that can be fitted with modular devices and with electrical interlock. The sockets feature a IP67 or IP66/IP67 protection rating and can be combined in compositions using the appropriate blind or transparent boxes. Versions above 32A feature Easy Contact receptacles for maximum contact performance over time and easier connection and disconnection operations.

The circuit protections, the fuses located in ceramic bases and the MCBs fixed on rail, are tightly fixed to the bottom of the socket and are accessible by opening the front lid in thermosetting GRP material. The interlock system is made with a steel bracket while the switch disconnecter is certified to the AC3-AC23A category at rated current.

Rated operating current:		16A	32A	63A	
Thermal current I _{th}	A	16	32	63	
AC21A	415V	A	16	32	
	500V				63
AC22A	415V	A	16	32	
	500V				63
AC23A	230V	A	16	32	
	400V				63
	500V				
AC23A	230V	kW	4.5	8.5	
	400V		7.5	15	34
	500V		8.5	17	44
AC3	230V	kW	4.5	8.5	18
	400V		7.5	15	31
	500V		8.5	17	40

Wiring data:		16A	32A	63A
Entry cable sections	mm ²	1 - 10		6 - 16
Tightening torque	Nm	2		

Compliance with standards	IEC/EN 60309-1 IEC/EN 60309-2 IEC/EN 60309-4 IEC/EN 60947-3
Material	Palazzoli thermosetting GRP
Protection rating (IP according to IEC/EN 60529)	IP66/IP67 (Module 95) IP67 (Module 125-250)
Colour	RAL5015 (cover) RAL7042 (base)
Resistance to abnormal heat and fire ("Glow Wire" according to IEC/EN 60695-2-10)	960°C
Flammability rating (according to UL94)	V0
Impact resistance (IK grade according to IEC/EN 62262)	IK10
Rated current	16A - 32A - 63A - 125A
Operating voltage	24V - 690V
Operating frequency	50-60Hz
Insulation voltage	690V
Insulation class	II □
Storage temperature	-50°C - +80°C
Operating temperature	-25°C - +50°C



Resistance to chemical agents

WATER	SALINE SOLUTION	ACIDS		BASES		SOLVENTS			
		CONCENTRATED	DILUTED	CONCENTRATED	DILUTED	ALCOHOL	ACETONE	PERCHLORO-ETHYLENE	BENZENE
↑	↑	→	↑	↑	↑	↑	↑	↑	↑
OILS		FATS		AMMONIA	OXIDISERS	INORGANIC SALTS	GASOLINE	DETERGENTS	U.V. RAYS
MINERAL	VEGETABLE	ANIMAL	SYNTHETIC						
↑	↑	↑	↑	↑	↑	↑	↑	↑	↑

Legend: ↑ high resistance → partial resistance



MODULE 95



Modular interlocked socket-outlets in thermosetting GRP with fuse holder base for wall-mounting **IP66/IP67**

Rated current (A)	Frequency	Rated voltage	Voltage colour	Poles	h ref.	Palazzoli code	Pack Qty	
16	50-60Hz	110V	Yellow	2P+⊕	4	472610	1	
	50-60Hz	110V	Yellow	3P+⊕	4	472710	1	
	50-60Hz	110V	Yellow	3P+N+⊕	4	472810	1	
	50-60Hz	230V	Blue	2P+⊕	6	472620	1	
	50-60Hz	230V	Blue	3P+⊕	9	472720	1	
	50-60Hz	230V	Blue	3P+N+⊕	9	472820	1	
	50-60Hz	400V	Red	2P+⊕	9	472630	1	
	50-60Hz	400V	Red	3P+⊕	6	472730	1	
	50-60Hz	400V	Red	3P+N+⊕	6	472830	1	
	entry M25	50-60Hz	500V	Black	3P+⊕	7	472750	1
	fuses E16 NDZ	50-60Hz	500V	Black	3P+N+⊕	7	472840	1
		50-60Hz	>50V *	Grey	2P+⊕	12	472640	1
		50-60Hz	>50V *	Grey	3P+⊕	12	472760	1
		100-300Hz	>50V	Green	2P+⊕	10	472650	1
		100-300Hz	>50V	Green	3P+⊕	10	472780	1
		100-300Hz	>50V	Green	3P+N+⊕	10	472870	1
>300-500Hz		>50V	Green	2P+⊕	2	472660	1	
>300-500Hz		>50V	Green	3P+⊕	2	472790	1	
>300-500Hz		>50V	Green	3P+N+⊕	2	472880	1	
60Hz		440-460V	Red	3P+⊕	11	472740	1	
60Hz	440-460V	Red	3P+N+⊕	11	472850	1		
DC	>50-250V	Grey	2P+⊕	3	472670	1		
32	50-60Hz	110V	Yellow	2P+⊕	4	468224	1	
	50-60Hz	110V	Yellow	3P+⊕	4	468234	1	
	entry M25	50-60Hz	230V	Blue	2P+⊕	6	468226	1
	50-60Hz	230V	Blue	3P+⊕	9	468239	1	
	fuses E16 NDZ	50-60Hz	400V	Red	2P+⊕	9	468229	1
		50-60Hz	400V	Red	3P+⊕	6	468236	1
50/60Hz	380/440V	Red	3P+⊕	3	468233	1		

* For isolation transformer

Features: the handle can be padlocked. Fuses not included.
Notes: special configurations on request.

Technical accessories:



MODULE 125



Modular interlocked socket-outlets in thermosetting GRP with fuse holder base for wall-mounting **IP67**



Rated current (A)	Frequency	Rated voltage	Voltage colour	Poles	h ref.	Palazzoli code	Pack Qty	
32	50-60Hz	110V	Yellow	2P+⊕	4	472611	1	
	50-60Hz	110V	Yellow	3P+⊕	4	472711	1	
	50-60Hz	110V	Yellow	3P+N+⊕	4	472811	1	
	50-60Hz	230V	Blue	2P+⊕	6	472621	1	
	50-60Hz	230V	Blue	3P+⊕	9	472721	1	
	50-60Hz	230V	Blue	3P+N+⊕	9	472821	1	
	50-60Hz	400V	Red	2P+⊕	9	472631	1	
	50-60Hz	400V	Red	3P+⊕	6	472731	1	
	50-60Hz	400V	Red	3P+N+⊕	6	472831	1	
	entry M32	50-60Hz	500V	Black	3P+⊕	7	472751	1
	50-60Hz	500V	Black	3P+N+⊕	7	472841	1	
	fuses E33 DIII	50-60Hz	690V	Black	3P+⊕	5	472754	1
		50-60Hz	690V	Black	3P+N+⊕	5	472854	1
		50-60Hz	>50V *	Grey	2P+⊕	12	472641	1
		50-60Hz	>50V *	Grey	3P+⊕	12	472761	1
		100-300Hz	>50V	Green	2P+⊕	10	472651	1
100-300Hz		>50V	Green	3P+⊕	10	472781	1	
100-300Hz		>50V	Green	3P+N+⊕	10	472871	1	
>300-500Hz		>50V	Green	2P+⊕	2	472661	1	
>300-500Hz		>50V	Green	3P+⊕	2	472791	1	
>300-500Hz		>50V	Green	3P+N+⊕	2	472881	1	
60Hz	440-460V	Red	3P+⊕	11	472741	1		
60Hz	440-460V	Red	3P+N+⊕	11	472851	1		
DC	>50-250V	Grey	2P+⊕	3	472671	1		
63	50/60Hz	380/440V	Red	3P+⊕	3	472771	1	
	50/60Hz	380/440V	Red	3P+N+⊕	3	472861	1	
	entry M32	50-60Hz	110V	Yellow	2P+⊕	4	472612	1
	50-60Hz	110V	Yellow	3P+⊕	4	472712	1	
	50-60Hz	110V	Yellow	3P+N+⊕	4	472812	1	
	50-60Hz	230V	Blue	2P+⊕	6	472622	1	
fuses E33 DIII	50-60Hz	230V	Blue	3P+⊕	9	472722	1	
	50-60Hz	230V	Blue	3P+N+⊕	9	472822	1	
	50-60Hz	400V	Red	2P+⊕	9	472632	1	
	50-60Hz	400V	Red	3P+⊕	6	472732	1	
	entry M32	50-60Hz	400V	Red	3P+N+⊕	6	472832	1
	50-60Hz	500V	Black	3P+⊕	7	472752	1	
	50-60Hz	500V	Black	3P+N+⊕	7	472842	1	
	50-60Hz	690V	Black	3P+⊕	5	472755	1	
	50-60Hz	690V	Black	3P+N+⊕	5	472855	1	
	50-60Hz	>50V *	Grey	2P+⊕	12	472642	1	
50-60Hz	>50V *	Grey	3P+⊕	12	472762	1		
60Hz	440-460V	Red	3P+⊕	11	472742	1		
60Hz	440-460V	Red	3P+N+⊕	11	472852	1		
DC	>50-250V	Grey	2P+⊕	3	472672	1		

* For isolation transformer

Features: the handle can be padlocked. Fuses not included.
Notes: special configurations on request.

Technical accessories:



Module 125 sockets are designed for possible entry from bottom side



MODULE 125



Modular interlocked socket-outlets in thermosetting GRP with MCB for wall-mounting IP67



Table with 8 columns: Rated current (A), Frequency, Rated voltage, Voltage colour, Poles, h ref., Palazzoli code, Pack Qty. Rows include configurations for 16, 32, 63, and 10kA switches.

Features: the handle can be padlocked. Voltage presence indicator. Note: special configurations on request.

Technical accessories:



MODULE 95



Modular interlocked socket-outlets in thermosetting GRP for wall-mounting 50-60Hz IP66/IP67

Table with 8 columns: Rated current (A), Rated voltage, Voltage colour, Poles, h ref., Palazzoli code, Pack Qty. Rows include configurations for 16 and 32 M25 entries.

Features: the handle can be padlocked. Note: special configurations on request.

MODULE 125



Modular interlocked socket-outlets in thermosetting GRP for wall-mounting 50-60Hz IP67



Table with 8 columns: Rated current (A), Rated voltage, Voltage colour, Poles, h ref., Palazzoli code, Pack Qty. Rows include configurations for 16, 32, and 63 M32 entries.

Features: the handle can be padlocked. Note: special configurations on request.

Technical accessories:



Module 125 sockets are designed for possible entry from bottom side



Module 125 sockets are designed for possible entry from bottom side



MODULE 125



Modular interlocked socket-outlets
in thermosetting GRP
with **DIN rail** for wall-mounting
50-60Hz **IP67**



Rated current (A)	Rated voltage	Voltage colour	Poles	h ref.	Palazzoli code	Pack Qty
16 M25 entry 4 modules	230V		2P+≐	6	472020	1
	400V		3P+≐	6	472130	1
	400V		3P+N+≐	6	472240	1
32 M32 entry 4 modules	230V		2P+≐	6	472021	1
	400V		3P+≐	6	472131	1
	400V		3P+N+≐	6	472241	1
	380/440V		3P+≐	3	472133	1
63 M32 entry 4 modules	230V		2P+≐	6	472022	1
	400V		3P+≐	6	472132	1
	400V		3P+N+≐	6	472242	1

Equipment included: all sockets are pre-wired up to the DIN rail.
Features: padlockable lid and with tamper-proof screw.
Notes: special configurations on request.

Technical accessories:



MODULE 95



Modular sockets
in thermosetting GRP
with **safety transformer (SELV)**
for wall-mounting
50-60Hz **IP67**

Rated current (A)	Rated voltage	Poles	Power (VA)	Palazzoli code	Pack Qty
16 M25 entry	230/24V	2P	150	469873	1

Features: continuous class II duty safety transformer enabled by the plug by means of microswitch.

MODULE 125



Modular sockets
in thermosetting GRP
with **safety transformer (SELV)**
for wall-mounting
50-60Hz **IP67**

Rated current (A)	Rated voltage	Poles	Power (VA)	Palazzoli code	Pack Qty
16 M25 entry	230/24V	2P	144	471873	1
	400/24V	2P	144	471893	1

Features: continuous class II duty safety transformer enabled by the plug by means of microswitch.

Technical accessories:



Module 125 sockets are designed for possible entry from bottom side



MODULE 95



Switches in thermosetting GRP with **fuse-holder base** for wall-mounting **IP66/IP67**

Rated current (A)	Poles	Entry Exit	Palazzoli code	Pack Qty
16 fuses e16 NDZ	3P	M25	290163	1
	4P	M25	290164	1
32 fuses e16 NDZ	3P	M25	290323	1
	4P	M25	290324	1

Features: the handle can be padlocked. Fuses not included.

MODULE 125



Switches in thermosetting GRP with **fuse-holder base** for wall-mounting **IP67**

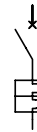
Rated current (A)	Poles	Entry Exit	Palazzoli code	Pack Qty
63 fuses E33 DIII	3P	M32	290762	1
	4P	M32	290763	1

Features: the handle can be padlocked. Fuses not included.

Technical accessories:



MODULE 125



MCBs in thermosetting GRP with **signalling lamp** for wall-mounting **IP67**

Rated current (A)	Poles	Entry Exit	Palazzoli code	Pack Qty
16 switch 4.5kA curve C	3P	M25	291163	1
	4P	M25	291164	1
32 switch 6kA curve C	3P	M32	291323	1
	4P	M32	291324	1
63 switch 10kA curve C	3P	M32	291633	1
	4P	M32	291634	1

Features: the handle can be padlocked.

Technical accessories:



EASY COMPOSER

Software for the design and quotation of boards in thermosetting GRP



1. Select the socket type



2. Compose the distribution board



3. Calculate the cost and download the certificates



The software is a free web application available at www.palazzoli.com



Boxes in thermosetting GRP with blind cover for composition of socket boards **IP66/IP67**

Outer dimensions (mm)	Holes	Max. number of installable sockets		Palazzoli code	Pack Qty
		Mod. 95	Mod. 125		
125x185x125	-	1	1	532200	1
190x185x125	-	2	-	532201	1
190x185x125	2xM25	2	-	532211	1
250x185x125	-	2	2	532202	1
290x185x125	-	3	-	532203	1
380x185x125	-	4	3	532204	1

Equipment included: code 532211 with 2 fittings M25 for rapid coupling.
Features: supplied with drilling template.
Notes: the following Palazzoli terminal blocks can be inserted into all boxes: 3x25mm², 4x16mm², 3x35mm², 4x25mm², 3x70mm², 4x35mm².



Boxes in thermosetting GRP with transparent window for composition of socket boards **IP66/IP67**

Outer dimensions (mm)	Holes	Max. number of installable sockets		No. of DIN modules	Palazzoli code	Pack Qty
		Mod. 95	Mod. 125			
125x185x150	-	1	1	5	532300	1
190x185x150	-	2	-	8	532301	1
190x185x150	2xM25	2	-	8	532311	1
250x185x150	-	2	2	12	532302	1
290x185x150	-	3	-	14	532303	1
380x185x150	-	4	3	19	532304	1

Equipment included: code 532311 with 2 fittings M25 for rapid coupling.
Features: supplied with drilling template. Padlockable modular door.

Technical accessories:



Back plates in galvanised steel for TAIS boxes

For quick-mounting boxes with dimensions (mm)	Palazzoli code	Pack Qty
125x185	532700	1
190x185	532701	1
250x185	532702	1
290x185	532703	1
380x185	532704	1

Uses: for fastening terminal blocks or non-modular devices.



Fittings for rapid coupling in technopolymer for composition of socket boards **IP66/IP67**

Hole type	Mountinghole (mm)	Max diameter for cable passage (mm)	Palazzoli code	Pack Qty
M25	25.5	16	538425	1
M32	32.5	20	538432	1



Tamper-proof kit for sealing

Screw type	Description	Palazzoli code	Pack Qty
M5x20	stainless steel screws	532100	1

Features: cylindrical head hexagonal slot screws and 90° double crossed drilling.



Mounting plates in thermosetting GRP with guided system for composition of socket boards

Outer dimensions (mm)	Max. number of installable sockets		Palazzoli code	Pack Qty
	Mod. 95	Mod. 125		
125x630	1	1	538800	1
190x500	2	-	538801	1
250x630	2	2	538802	1
290x500	3	-	538803	1
380x630	3	3	538804	1

Equipment included: built-in threaded metal dowels, supplied with screws and stainless steel washers for fastening.



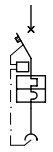
Coupling fitting for mounting plates

For mounting plate code	Palazzoli code	Pack Qty
538800, 538801, 538802, 538803, 538804, 538703, 538711, 538712	538791	50

Uses: these snap-on devices are fixed into their housings on the base plates for interlocked socket-outlets.



MODULE 250



Socket-outlets in thermosetting GRP with **electrical interlock** and **MCCB** for wall-mounting 50-60Hz **IP67**



Rated current (A)	Rated voltage	Voltage colour	Poles	h ref.	Palazzoli code	Pack Qty
63 window b	400V	●	3P+⊕	6	478336	1
	400V	●	3P+N+⊕	6	478346	1
	500V	●	3P+⊕	7	478337	1
	500V	●	3P+N+⊕	7	478347	1
125 window b	400V	●	3P+⊕	6	478436	1
	400V	●	3P+N+⊕	6	478446	1
	500V	●	3P+⊕	7	478437	1
500V	●	3P+N+⊕	7	478447	1	

Features: complete with pilot contact used for the electrical interlock. Sealable screws.

MODULE 250



Modular socket-outlets in thermosetting GRP with **electrical interlock** **MCCB** and **RCD** for wall-mounting 50-60Hz **IP67**



Rated current (A)	Rated voltage	Voltage colour	Poles	h ref.	Palazzoli code	Pack Qty
63 window b	400V	●	3P+⊕	6	476336	1
	400V	●	3P+N+⊕	6	476346	1
	500V	●	3P+⊕	7	476337	1
	500V	●	3P+N+⊕	7	476347	1
125 window b	400V	●	3P+⊕	6	476436	1
	400V	●	3P+N+⊕	6	476446	1
	500V	●	3P+⊕	7	476437	1
500V	●	3P+N+⊕	7	476447	1	

Features: complete with pilot contact used for the electrical interlock. Sealable screws.

Technical accessories:



MODULE 250



Modular sockets in thermosetting GRP with safety **transformer (SELV)** for wall-mounting 50-60Hz **IP67**

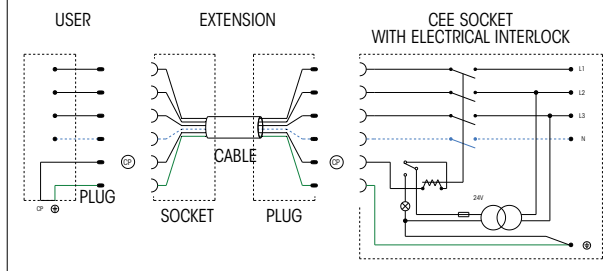
Rated current (A)	Rated voltage	Poles	h ref.	Palazzoli code	Pack Qty
32 window b	230/48V~	2P	720	471819	1
	400/48V~	2P	720	471839	1

Features: continuous class II duty safety transformer enabled by the plug by means of microswitch. Sealable screws.

Technical accessories:

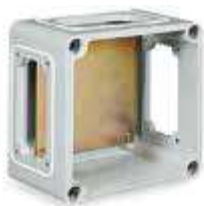


CONNECTING SCHEME



FEATURES OF THE ELECTRICALLY INTERLOCKED SOCKET PROTECTION

MCCB	Rated impulse seal voltage U_i	800V
	Rated impulse-withstand voltage U_{imp}	8kV
	Breaking capacity I_{cu} (400V)	8kA
	Breaking capacity I_{cu} (500V)	18kA
	Mechanical duration	25000 operations
	Electrical duration	8000 operations
	Overload protection regulation	0.7-1 x In
	Short-circuit protection	10 x Neutral protection
	50%	
RCD	Protection type	A - AC
	Operating voltage	85-690V
	Operating frequency	45-66Hz
	Failure frequency	50-60Hz
	Intervention threshold regulation	0.03A - 0.1A - 0.3A - 0.5A - 1A - 3A
	Intervention time	instantaneous
	Absorbed power	<5W 690Vac



Boxes in thermosetting GRP
for composition
of socket boards
IP67

Outer dimensions (mm)	Window type	Installable socket module	Palazzoli code	Pack Qty
		2x95/2x125	531220	1
250x185x115		1 x Win. "b" 2x95/2x125/1x250	531221	1
		1 x Win. "b" 2x95/2x125/1x250	531331	1

Equipment included: back plate. Drilling template.
Notes: complete series at page 151.

Technical accessories:



Blind low covers
in thermosetting GRP
for TAIS Grande boxes
IP67

For boxes with dimensions (mm)	Cover height (mm)	Palazzoli code	Pack Qty
250x185	25	535321	1

Equipment included: complete with captive screws that can be sealed.



Windowed covers
in polycarbonate
for TAIS Grande boxes
IP67

For boxes with dimensions (mm)	Lid height (mm)	No. of DIN modules	Palazzoli code	Pack Qty
250x185	80	11	535643	1

Equipment included: complete with captive screws that can be sealed, DIN rail and small parts for fastening on a plate.
Features: padlockable lid and with tamper-proof screw.



Flat blind flanges
in thermosetting GRP
for windowed walls
IP67

Type	Window dimensions (mm)	Flange height (mm)	Palazzoli code	Pack Qty
a	110x60	15	538110	2
b	175x60	15	538210	2

Uses: closing the cable entry windows. Holes can be drilled for applying cable glands.



Blind flanges raised
in thermosetting GRP
for windowed walls
IP67

Type	Window dimensions (mm)	Flange height (mm)	Palazzoli code	Pack Qty
a	110x60	45	538130	2
b	175x60	45	538230	2

Uses: closing the cable entry windows. Holes can be drilled for applying cable glands. The increased height helps entry of large cables or pipes. They make wiring easier as they increase the internal volume of the enclosure.

Technical accessories:



Supports for bus bars
for TAIS boxes

Installable on windows type	Installable bus bars (mm)	Palazzoli code	Pack Qty
a	3 x 16x4 (16x5 - 20x4 - 20x5), 2 by 16x4 (earth and neutral), 3 of ø 9 (auxiliary circuits)	538180	1
b	3 of 25x5 (25x6 - 32x5 - 32x6), 2 of 25x5 (earth and neutral) 3 of ø 11 (auxiliary circuits)	538280	1

Uses: they are used to facilitate the application of conductor busbars in watertight distribution boards composed of equipment in TAIS Grande modular insulating boxes with windows type 'a', 'b'.



Boxes in thermosetting GRP with **blind cover** for composition of socket boards **IP67**

Outer dimensions (mm)	Window type	Installable socket module	Power dissipation (W)	Palazzoli code	Pack Qty
125x125x125	Blind walls	95 / 125	13	532016	1
185x125x125	Blind walls	95 + 95	15	532017	1
250x125x125	Blind walls	125 + 125	20	532018	1

Features: supplied with drilling template.



Boxes in thermosetting GRP with **transparent cover** for composition of series of socket boards **IP67**

Outer dimensions (mm)	Window type	Installable socket module	No. of DIN modules	Power dissipation (W)	Palazzoli code	Pack Qty
125x125x125	Blind walls	95 / 125	4	13	532516	1
185x125x125	Blind walls	95 + 95	6.5	15	532557	1
250x125x125	Blind walls	125 + 125	9	20	532658	1

Features: supplied with drilling template. Padlockable lid and with tamper-proof screw.



Back plates in galvanised steel for TAIS boxes

For box dimensions	For box code	Palazzoli code	Pack Qty
125x125	532016, 532016EX	532716	1
185x125	532017, 532017EX	532717	1
250x125	532018	532718	1

Uses: for fastening terminal blocks or non-modular devices.

Technical accessories:



page 161



Adaptors from Pg hole to metric hole **IP67**

Pg	From hole Metric	To metric hole	Palazzoli code	Pack Qty
21	M25	M25	538421	1
29	M32	M32	538429	1
36	M40	M40	538436	1

Features: they allow to couple sockets with Pg or metric hole to boxes with metric hole and viceversa.



Mounting plates in thermosetting GRP for composition of socket boards

Dimensions (mm)	No. of installable devices	Installable device module	Palazzoli code	Pack Qty
185x501	2	2X95	538703	1
125x630	1	95/125	538711	1
250x630	2	125+125/125+95/95+125	538712	1

Equipment included: built-in threaded metal dowels, supplied with screws and stainless steel washers for fastening.



Transparent lids
in polycarbonate
for **modular devices**

No. of DIN modules	Dimensions (mm)	Palazzoli code	Pack Qty
4	92x84x30	538610	10
6.5 or 7.5	152x84x30	538620	10
9 or 11	214x84x30	538630	5

Features: padlockable lid and with tamper-proof screw.



Milling cutters cup shaped
in steel for quick drill
connection tungsten carbide
gear teeth specific for
thermosetting GRP

Hole type	Diameter (mm)	Palazzoli code	Pack Qty
Pg13.5	20	538400	1
Pg16	22		
Pg21	29		
Pg29	38		
Pg36	46	538410	1
M20	20.5		
M25	25.5		
M32	32.5		
M40	40.5		



Cable glands made
of insulating material
metric pitch with long thread
IP68

Threading	Mounting hole (mm)	Fastening diameter (mm)	Thread length (mm)	Palazzoli code	Pack Qty
M12x1.5	12.5	2.5-6.5	15	581112	100
M16x1.5	16.5	3.5-10	15	581116	50
M20x1.5	20.5	7-14	15	581120	50
M25x1.5	25.5	9-18	15	581125	25
M32x1.5	32.5	14-25	15	581132	20
M40x1.5	40.5	18-32	16	581140	10
M50x1.5	50.5	24-38.5	16	581150	5
M63x1.5	63.5	35-48	16	581163	5



Locknuts
in insulating material
with **metric threading**

Threading	Palazzoli code	Pack Qty
M12x1.5	581212	50
M16x1.5	581216	50
M20x1.5	581220	50
M25x1.5	581225	50
M32x1.5	581232	50
M40x1.5	581240	20
M50x1.5	581250	10
M63x1.5	581263	5

Uses: for fixing cable glands with metric thread on walls with through-holes.

The background of the entire page is a night-time satellite view of the Earth, showing the illuminated landmasses of Europe and Africa. A bright sun or star is positioned at the horizon, creating a lens flare effect. A network of blue lines and dots, resembling a constellation or a data network, is overlaid on the image. The Palazzoli logo is prominently displayed at the top center.

Palazzoli

— excellence —
FROM ITALY

Palazzoli S.p.A
25128 Brescia - Italy - Via F. Palazzoli, 31
Tel +39 030 2015.1
Fax +39 030 2015.258
www.palazzoli.com
export@palazzoli.com
