

UM-S Motorized unit kit for base mounting switches 6P - 8P

S6000N Size 2 ready to motorize (500A... 630A)
S5000M Size 3 ready to motorize (800A... 1000A)
S5000N Size 4 ready to motorize (1250A... 2000A)



		CODE - 6P ^{*(1)}	CODE - 8P ^{*(1)}		CODE - 120 Vac ^{*(1)}	CODE - 230 Vac ^{*(1)}
Size 2 S6N	500A	S6N05006PRC	S6N05008PRC	UM	UM-S26120M	UM-S26230M
	630A	S6N06306PRC	S6N06308PRC	UM		
Size 3 S5M	800A	S5M08006PRC	S5M08008PRC	UM	UM-S35120M	UM-S35230M
	1000A	S5M10006PCC	S5M10008PCC	UM		
	1250A	S5N12506PSC	S5N12508PSC	UM		
Size 4 S5N	1600A	S5N16006PSC	S5N16008PSC	UM		
	1800A	S5N18006PSC	S5N18008PSC	UM		
	2000A	S5N20006PDC	S5N20008PDC	UM		UM-S56230M

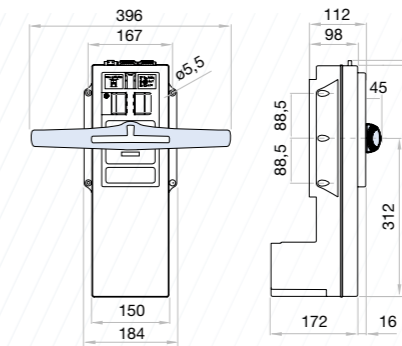
- UM + S6N normal mounting
- UM + S5M normal mounting
- UM + S5N normal mounting

UM + S5M inverted mounting ^{*(4)}
 (please consult UM codes)

* Auxiliary manual handle supplied with the UM

Dimensions (mm)

UM

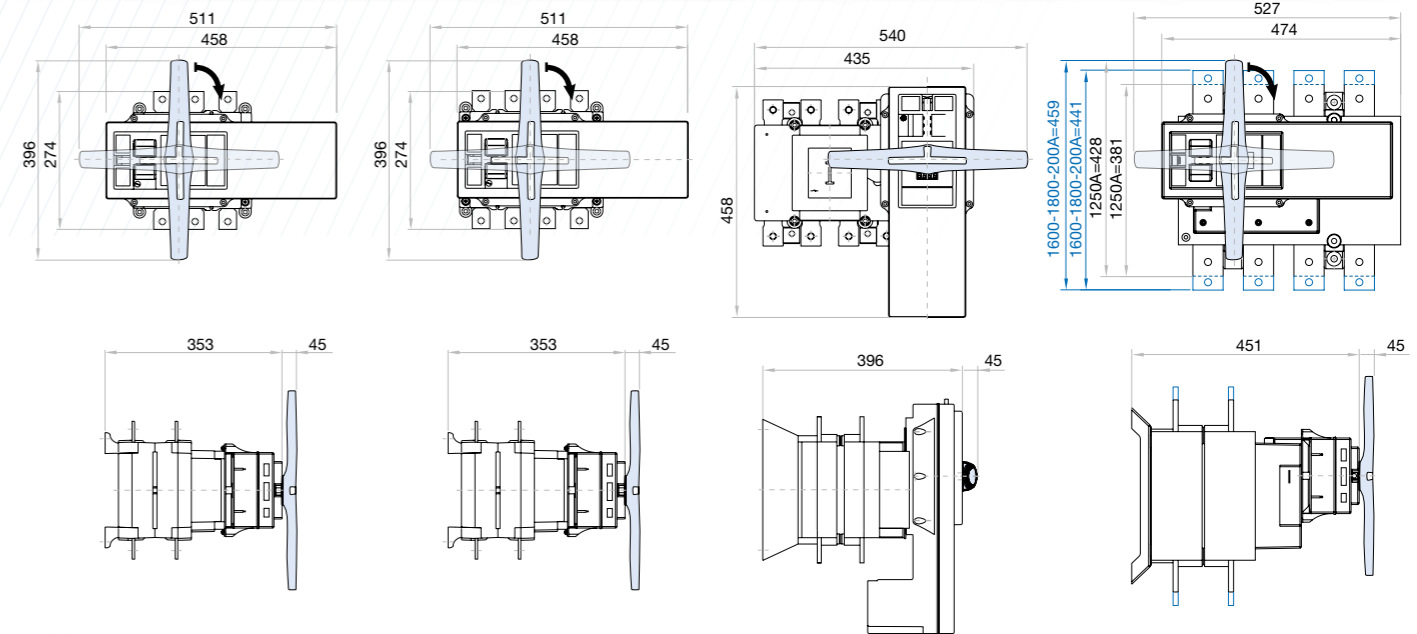


S6000N 6P size 2 + UM

S6000N 8P size 2 + UM

S5000M size 3 + UM

S5000N size 4 + UM



Technical information



According to IEC 60947-3



Voltage supply		120Vac ^{*(1)}	230Vac ^{*(1)}
Operating voltage range ^{*(2)}	ΔV	0,85*V to 1,15*V	
Operating voltage range according to IEC 60947-6	ΔV	0,95*V to 1,10*V	
Cable of voltage supply	mm ²	1,5 - 2,5	1,5 - 2,5
Cable section area Input & MODBUS Signals	mm ²	0,5 - 1,5	0,5 - 1,5
Cable section area Outputs	mm ²	0,5 - 1,5	0,5 - 1,5
Inrush Current	S6N	A	6,3
	S5M S5N	A	11
Nominal Current during operation	S6N	A	3
	S5M S5N	A	3,9
Use current (I _{rms})	A	0,041	0,041
Use current (I _{max})	A	0,275	0,275
Protection Fuse Reference F4AL250V (Littelfuse)	A	4	4
Operating time	S6N	s	0,25
	S5M S5N	s	0,275
Number of UM operations S6N/2	Cycles	5000	5000
Operation rate (0-I-0) ^{*(3)}	Cycles/hour	60	60
Number of UM operations S5M/3	Cycles	3000	3000
Operation rate (0-I-0) ^{*(3)}	Cycles/hour	20	20
Number of UM operations S5N/4	Cycles	600	600
Operation rate (0-I-0) ^{*(3)}	Cycles/hour	20	20
Working temperature range	T ^a 85%Un	- 25°C ... + 55°C	
	T ^a Un	- 25°C ... + 55°C	
	T ^a 115%Un	- 25°C ... + 55°C	
Transportation and storage temperature		- 40°C ... + 70°C	
UM weight	Kg	4,4	

^{*(1)} UM Kit code is related to the code of switch from its section depending on size and it is for normal mounting. For DC values, consult please.

For different type of mounting or different code of switch or UM Kit please consult.

^{*(2)} Operating voltage range for the reference UM-S56230M is 0,9*Vn to 1,1*Vn

^{*(3)} According to IEC 60947-3.

^{*(4)} For inverted mounting there are references for UM with inverted frontal plates. Supply under request.

EMC table (Electromagnetic compatibility)

Emission								
Test	Standard	Frequency range	Level	According to criterion	Criterion (test)	Result		
Unwanted voltage	EN 55011	150kHz-30MHz	N.A.	N.A.	N.A.	C		
Radiated emission	EN 55011	30MHz-1GHz	N.A.	N.A.	N.A.	C		
Emission of harmonic current	EN 61000-3-2	0,02A 0-2kHz	N.A.	N.A.	N.A.	C		
Flicker	EN 61000-3-3	0-2kHz	N.A.	N.A.	N.A.	C		
Immunity								
Test	Standard	Frequency range	Level	According to criterion	Criterion (test)	Result		
Electrostatic discharges	EN 61000-4-2	Special, A +/- 8KV air discharge	SPECIAL	B	A	C		
Electromagnetic H.F. field	EN 61000-4-3	10V/m De 80MHz a 2,7 Ghz	SPECIAL	A	A	C		
Fast transients (Burst)	EN 61000-4-4	+/-2KV power supply +/- 1KV signal supply Rep 5kHz - 2min	3	B	A	C		
Fast transient (surge discharge)	EN 61000-4-5	+/-4KV power supply Generator impedance 2Ω Wave 1,2/50μs	5	B	A	C		
Conducted disturbances	EN 61000-4-6	10V supply and signal 0,15-80MHz	3	A	A	C		
Electromagnetic field, industrial frequency	EN 61000-4-8	Field intensity 30A/m	4	A	A	C		
				N.A.	100% Un - 10ms	B	A	C
				N.A.	100% Un - 20ms	B	A	C
Voltage dips, interruptions and voltage variations	EN 61000-4-11			N.A.	60% Un - 200ms	C	A	C
				N.A.	30% Un - 500ms	C	A	C
				N.A.	20% Un - 5000ms	C	A	C
				N.A.	100% Un - 5000ms	C	C	C

CRITERION A: Normal service behaviour in determined limits

CRITERION B: Transient alteration of the service. The appliance gets back to the normal performing without the intervention of the operator

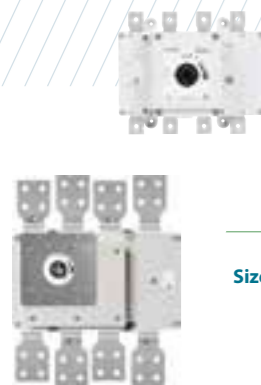
Test level 3: Typical industrial environment, without special installation measures

Test level 4: Severe industrial environment

Special level: Level of higher electromagnetic severe environment

UM-S Motorized unit kit for base mounting switches 3P - 3P+N

S5000 Sizes 3-4 ready to motorize (800A... 2000A)
S5000N Size 5 ready to motorize (2000A... 3150A)



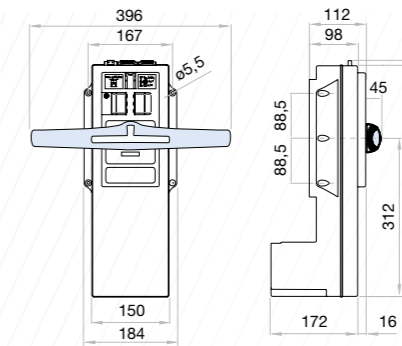
Size	S5	CODE - 3P ^{*(1)}		CODE - 3P+N ^{*(1)}		CODE - 120 Vac ^{*(1)}		CODE - 230 Vac ^{*(1)}		
		800A	1000A	1250A	1000A	1250A	1600A	1800A	2000A	2500A
Size 3	S5	S5-08003PRC	S5-08003NRC	UM	UM-S31120M	UM-S31230M				
		S5-10003PCC	S5-10003NCC	UM	UM-S41120M	UM-S41230M				
		S5-12503PCC	S5-12503NCC	UM	UM-S56230M					
Size 4	S5	S5-10003PSC	S5-10003NSC	UM	UM-S41120M	UM-S41230M				
		S5-12503PSC	S5-12503NSC	UM	UM-S41120M	UM-S41230M				
		S5-16003PSC	S5-16003NSC	UM	UM-S41120M	UM-S41230M				
Size 5	S5N	S5-18003PSC	S5-18003NSC	UM	UM-S41120M	UM-S41230M				
		S5-20003PDC	S5-20003NDC	UM	UM-S41120M	UM-S41230M				
		S5N20003PPC	S5N20003NPC	UM	UM-S56230M					
		S5N25003PPC	S5N25003NPC	UM	UM-S56230M					
		S5N31503PPC	S5N31503NPC	UM	UM-S56230M					

- UM + S5 size 3 normal mounting
- UM + S5 size 4 normal mounting
- UM + S5N size 5 normal mounting

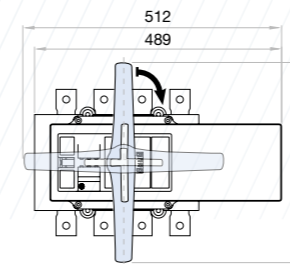
* Auxiliary manual handle supplied with the UM

Dimensions (mm)

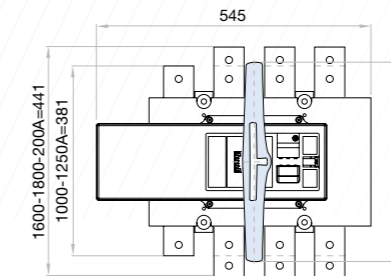
UM



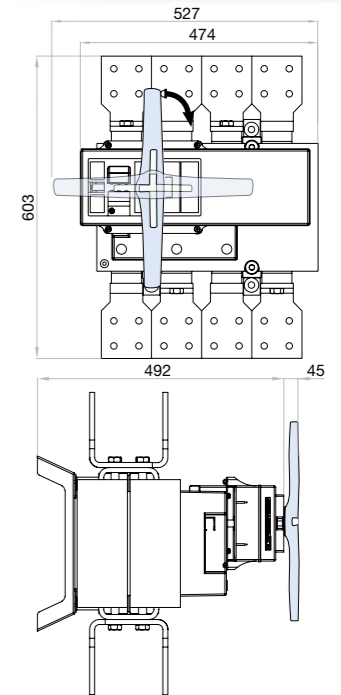
S5000 size 3 + UM



S5000 size 4 + UM



S5000N size 5 + UM



EMC table (Electromagnetic compatibility)

Emission						
Test	Standard	Frequency range	Level	According to criterion	Criterion (test)	Result
Unwanted voltage	EN 55011	150kHz-30MHz	N.A.	N.A.	N.A.	C
Radiated emission	EN 55011	30MHz-1GHz	N.A.	N.A.	N.A.	C
Emission of harmonic current	EN 61000-3-2	0,02A 0-2kHz	N.A.	N.A.	N.A.	C
Flicker	EN 61000-3-3	0-2kHz	N.A.	N.A.	N.A.	C

Immunity								
Test	Standard	Frequency range	Level	According to criterion	Criterion (test)	Result		
Electrostatic discharges	EN 61000-4-2	Special, A +/- 8KV air discharge	SPECIAL	B	A	C		
Electromagnetic H.F. field	EN 61000-4-3	10V/m De 80MHz a 2,7 Ghz	SPECIAL	A	A	C		
Fast transients (Burst)	EN 61000-4-4	+/-2KV power supply +/- 1KV signal supply Rep 5kHz - 2min	3	B	A	C		
Fast transient (surge discharge)	EN 61000-4-5	+/-4KV power supply Generator impedance 2Ω Wave 1,2/50μs	5	B	A	C		
Conducted disturbances	EN 61000-4-6	10V supply and signal 0,15-80MHz	3	A	A	C		
Electromagnetic field, industrial frequency	EN 61000-4-8	Field intensity 30A/m	4	A	A	C		
				N.A.	100% Un - 10ms	B	A	C
				N.A.	100% Un - 20ms	B	A	C
Voltage dips, interruptions and voltage variations	EN 61000-4-11			N.A.	60% Un - 200ms	C	A	C
				N.A.	30% Un - 500ms	C	A	C
				N.A.	20% Un - 5000ms	C	A	C
				N.A.	100% Un - 5000ms	C	C	C

CRITERION A: Normal service behaviour in determined limits

CRITERION B: Transient alteration of the service. The appliance gets back to the normal performing without the intervention of the operator

Test level 3: Typical industrial environment, without special installation measures

Test level 4: Severe industrial environment

Special level: Level of higher electromagnetic severe environment

Technical information



According to IEC 60947-3

Parameter	Unit	120 Vac ^{*(1)}		230 Vac ^{*(1)}	
		Value	Value	Value	Value
Voltage supply					
Operating voltage range ^{*(2)}	ΔV		0,85*V to 1,15*V		
Operating voltage range according to IEC 60947-6	ΔV		0,95*V to 1,10*V		
Cable of voltage supply	mm ²	1,5 - 2,5		1,5 - 2,5	
Cable section area Input & MODBUS Signals	mm ²	0,5 - 1,5		0,5 - 1,5	
Cable section area Outputs	mm ²	0,5 - 1,5		0,5 - 1,5	
Inrush Current	A	11		11	
Nominal Current during operation	A	-		3,9	
Use current (I _{rms})	A	0,041		0,041	
Use current (I _{max})	A	0,275		0,275	
Protection Fuse Reference F4AL250V (Littelfuse)	A	4		4	
Operating time	s	0,275		0,275	
Number of UM operations S5/3 - S5/4	Cycles	3000		3000	
Operation rate (0-I-0) ^{*(3)}	Cycles/hour	20		20	
Number of UM operations S5N/5	Cycles	600		600	
Operation rate (0-I-0) ^{*(3)}	Cycles/hour	20		20	
Working temperature range	T ^a 85%Un		- 25°C ... + 55°C		
	T ^a Un		- 25°C ... + 55°C		
	T ^a 115%Un		- 25°C ... + 55°C		
Transportation and storage temperature			- 40°C ... + 70°C		
UM weight	Kg		4,4		

*⁽¹⁾ UM Kit code is related to the code of switch from its section depending on size and it is for normal mounting. For DC values, consult please.

For different type of mounting or different code of switch or UM Kit please consult.

*⁽²⁾ Operating voltage range for the reference UM-S56230M is 0,9*Vn to 1,1*Vn

*⁽³⁾ According to IEC 60947-3.