



CONT SERIES

TERMINAL BLOCKS FOR DERIVATION BOXES

Applications

CONT series terminal blocks are mainly used inside of derivation boxes and, from a physical point of view, can be seen as simple Kirchhoff's nodes.

General features

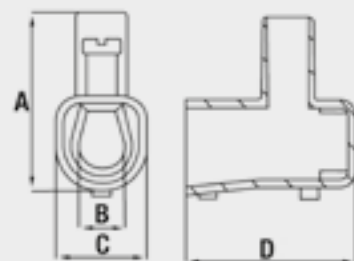
- New hook/release system **NEW**
- Increased voltages (6 ÷ 35 mm²) **NEW**
- Heat resistance 130 °C
- IP20 degree of protection (1.5 ÷ 6 mm²)
- IP00 degree of protection (10 ÷ 35 mm²)
- High dielectric rigidity
- Resistance to surface currents
- Screw-clamp
- Conformance to EN 60998-1:2004 and EN 60998-2-1:2004 regulations



Materials used

- Products conform to the essential requirements of the BT 2006/95/EC Directive
- Brass CW 614 N
- Zinc-plated screws and grains

LINK TO Catalogue: [Systems and products for the connection of electrical panels](#)
The catalogue can be downloaded from our website www.cabur.eu



CODE	ID CODE	Quantity per pack	Rated cross-section mm ²	Nominal current	Flexible or rigid conductor			Insulation voltage	No. poles	Dimensions mm			
					Conductor section mm ²	No. conductors rigid	No. conductors flexible			A	B	C	D
CONTC01	CONT/1,5	10	1.5	17.5A	1.5	2	2	450V	10	16.0	3.1	8.4	15.0
					1.0	2-3	2-3						
					0.75	2-4	2-4						
CONTC02	CONT/2,5	10	2.5	24A	2.5	2	2	450V	10	17.6	3.8	8.4	17.6
					1.5	2-3	2-3						
					1.0	2-4	2-4						
CONTC04	CONT/4	10	4.0	32A	4.0	2	2	450V	10	19.6	4.5	10.6	20.9
					2.5	2-3	2-3						
					1.5	2-4	2-4						
CONTC06	CONT/6	10	6.0	41A	6.0	2	2	750V NEW	10	22.5	5.6	11.8	22
					4.0	2-3	2						
					2.5	2-4	2-4						
CONTC10	CONT/10	5	10.0	57A	10.0	2	2	750V NEW	10	28.3	7.5	14.8	24.0
					6.0	2-3	2						
					4.0	2-4	2-3						
CONTC16	CONT/16	5	16.0	76A	16.0	2	2	750V NEW	10	33.7	9.5	19.7	30
					10.0	2-3	2						
					6.0	2-4	2-3						
CONTC25 *	CONT/25	5	25.0	101A	25.0	2	2	750V NEW	1	40.4	12.0	22.0	38.0
					16.0	2-3	2						
					10.0	2-4	2-3						
CONTC35 *	CONT/35	5	35.0	125A	35.0	2	2	750V NEW	1	44.1	14.0	24.8	44.1
					25.0	2-3	2						
					16.0	2-4	2-3						

* nickel-plated brass