



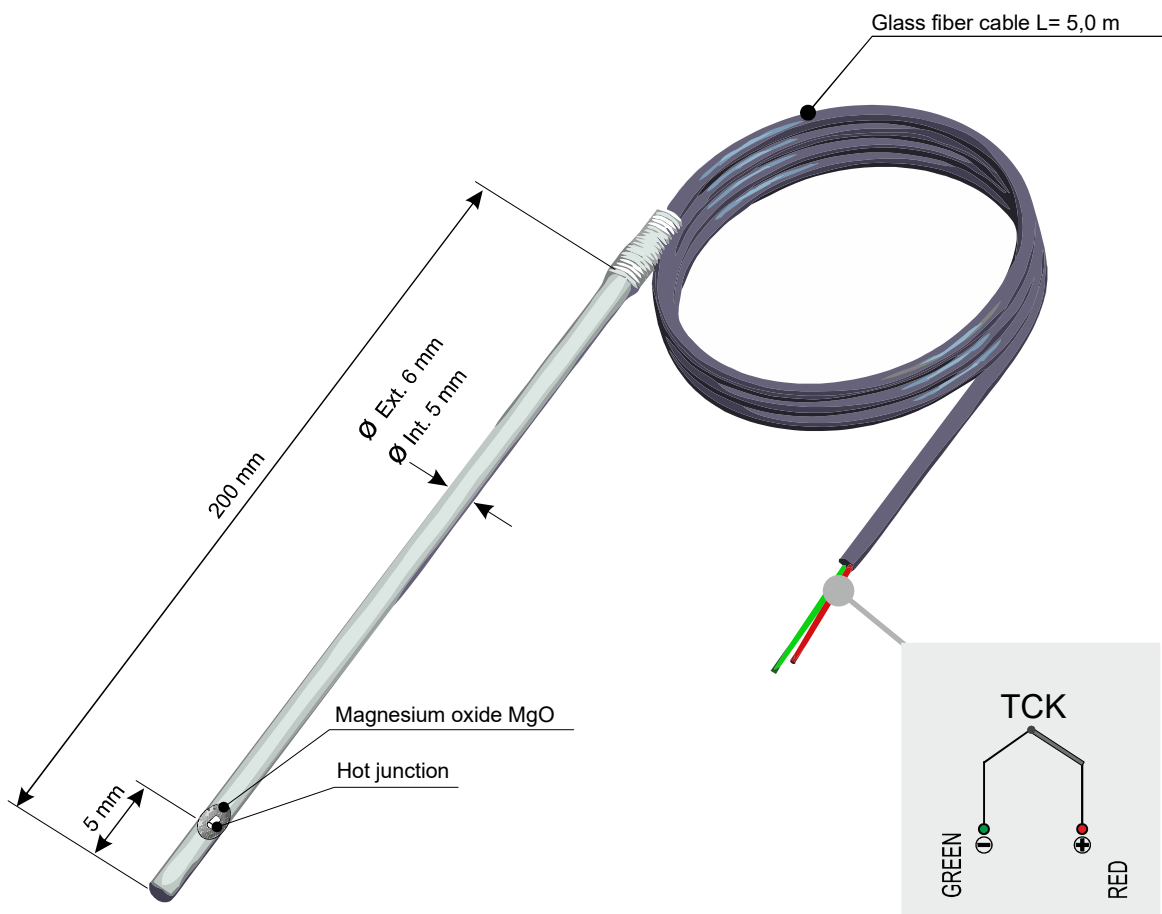
**PIXSYS**  
electronics

www.pixsys.net ☎ +39 041 5190518 R.A.

CODE : **2000.90.025**

**TCK-6x200-I600-0000-5,0TTS-IS-1,02**

DESCRIPTION :  
TCK sensor 6x200 mm, Inconel 600 MGO insulated,  
no process connection with 5m glass fiber cable.



<b>OPERATING TEMPERATURE :</b>	-100 +800°C
<b>JUNCTION :</b>	Cromel - Alumel > Wire Diam. 1.02
<b>HEAD MATERIAL :</b>	Not available
<b>IMMERSION MATERIAL :</b>	INCONEL 600 Max. operating temperature : 1212°C
<b>JUNCTION MATERIAL :</b>	Not available
<b>INSULATION MATERIAL :</b>	MgO Magnesium oxide >20Mohm @ 25°C (500Vdc)
<b>TAPERING :</b>	NO
<b>CERTIFICATION :</b>	NO
<b>CABLE MATERIAL :</b>	TTS Glass fiber
<b>NORMATIVE :</b>	DIN 43710

CONNECTION CABLE FEATURES					
SHEATH MATERIAL	TEMPERATURE [°C]		ABRASION RESISTANCE	HUMIDITY RESISTANCE	FLAME BEHAVIOUR
	EXERCISE	INSTANTANEOUS			
PVC	-30 / + 105	+ 105	Good	Good	Self-extinguish
GSC Silicon Rubber	-40 / + 250	+ 250	Sufficient	Fair	Self-extinguish
TFE Teflon	-200 / + 260	+ 310	Excellent	Excellent	Self-extinguish
KAP Kapton	-200 / + 400	+ 440	Fair	Good	Self-extinguish
TTS Glass fiber	-200 / + 500	+ 500	Poor	Poor	Incombustible
TTC Ceramic fiber	+ 1000	+ 1100	Poor	Poor	Incombustible

## EASYUP CONFIGURATION

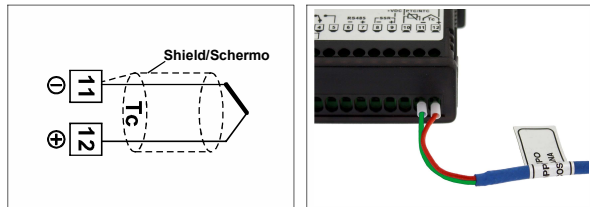
To simplify installation start-up, "EasyUp" mode allows to select type of sensor and to fix its measuring range on the controller by entering a password (see table below).

EASYUP CODE FOR THIS SENSOR :

2351

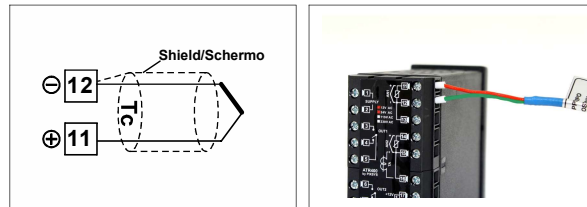
<b>SENSOR SELECTION :</b>	TCK
<b>LOWER LIMIT :</b>	-100°C
<b>UPPER LIMIT :</b>	+800°C

### ATR142 CONNECTION



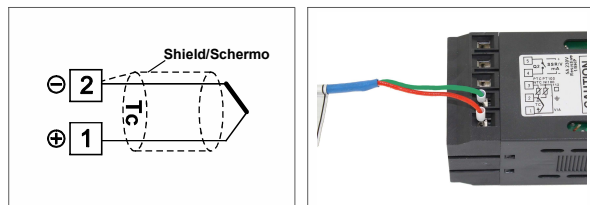
N.B. EasyUp on software version 1.12 or greater

### ATR401 CONNECTION



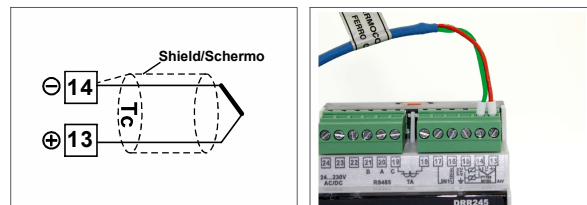
N.B. EasyUp on software version 1.01 or greater

### ATR236 /243 CONNECTION



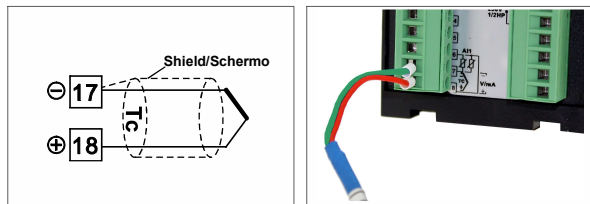
N.B. EasyUp on software version 1.18 or greater

### DDR245 CONNECTION



N.B. EasyUp on software version 1.18 or greater

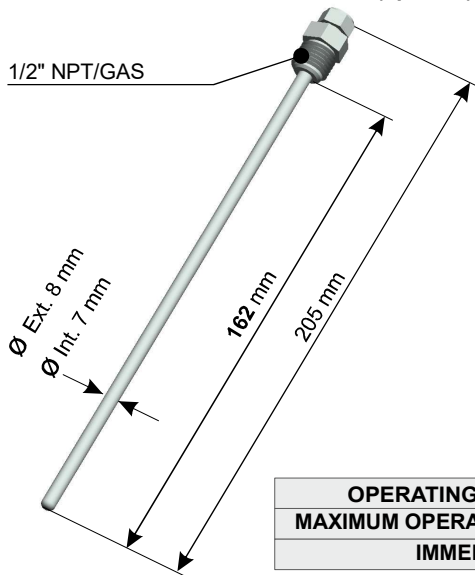
### ATR621 / 171 CONNECTION



N.B. EasyUp on software version 1.01 or greater

## THERMOWELL OR SLIDING JUNCTION

**THERMOWELL Code :** 2000.30.018 (optional)



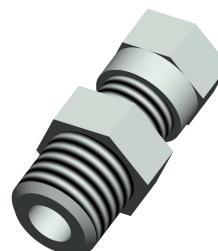
**SLIDING JUNCTION :**  
(optional)

**Code :** 2000.30.003 1/8" GAS at Ø 6 mm

**Code :** 2000.30.006 1/4" GAS at Ø 6 mm

**Code :** 2000.30.009 1/2" GAS at Ø 6 mm

**MATERIAL :** STEEL AISI 316L



<b>OPERATING TEMPERATURE :</b>	-100°C + 900°C
<b>MAXIMUM OPERATING PRESSURE :</b>	100 Bar
<b>IMMERSION MATERIAL :</b>	Steel AISI 316L (food industry)