

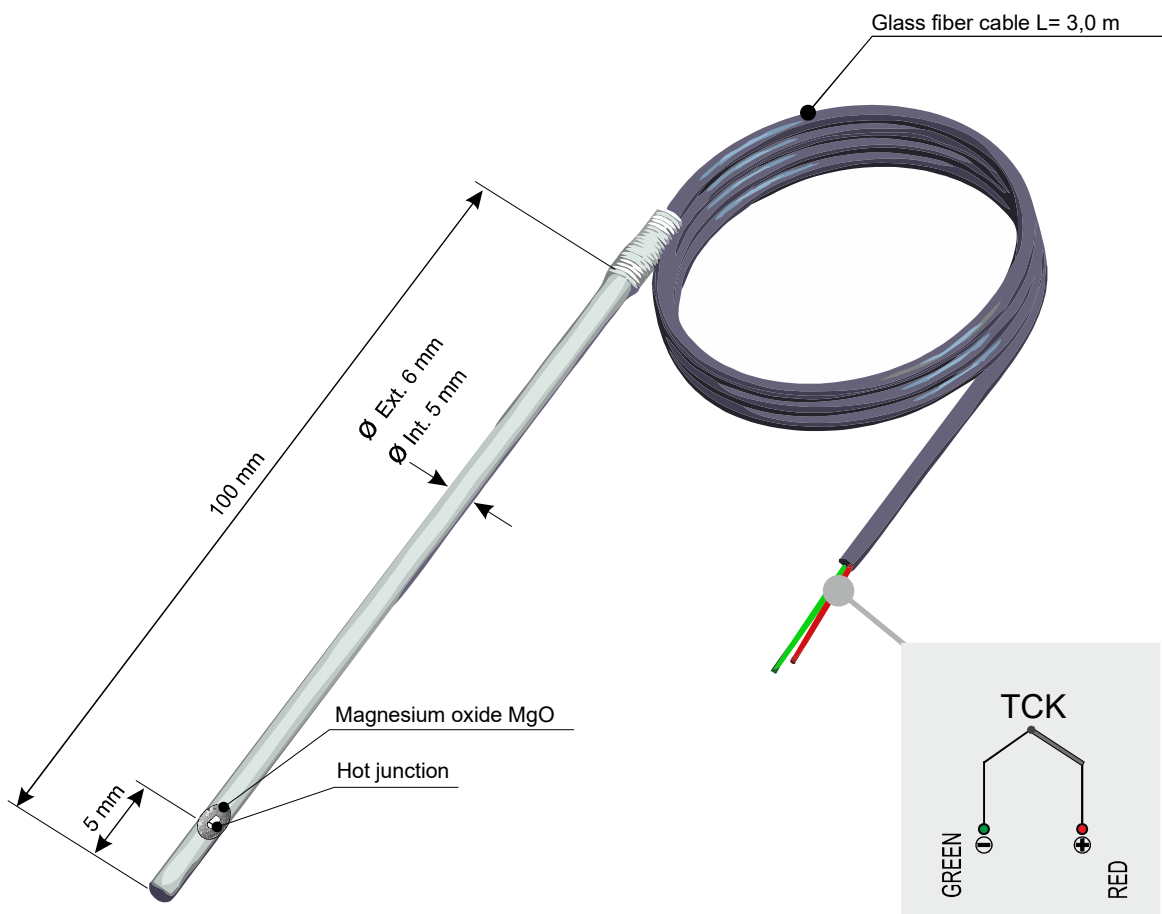
PIXSYS
electronics

www.pixsys.net ☎ +39 041 5190518 R.A.

CODE : **2000.90.068**

TCK-6x100-I600-0000-3,0TTS-IS-1,02

DESCRIPTION :
TCK sensor 6x100 mm, Inconel 600 MGO insulated,
no process connection with 3m Glass fiber cable.



OPERATING TEMPERATURE :	-100 +800°C
JUNCTION :	Cromel - Alumel > Wire Diam. 1.02
HEAD MATERIAL :	Not available
IMMERSION MATERIAL :	INCONEL 600 Max. operating temperature : 1212°C
JUNCTION MATERIAL :	Not available
SENSOR INSULATION :	MgO Magnesium oxide >20Mohm @ 25°C (500Vdc)
TAPERING :	NO
CERTIFICATION :	NO
CABLE MATERIAL :	TTS Glass fiber
NORMATIVE :	DIN 43710

CONNECTION CABLE FEATURES

SHEATH MATERIAL	TEMPERATURE [°C]		ABRASION RESISTANCE	HUMIDITY RESISTANCE	FLAME BEHAVIOUR
	EXERCISE	INSTANTANEOUS			
PVC	-30 / + 105	+ 105	Good	Good	Self-extinguish
GSC Silicon Rubber	-40 / + 250	+ 250	Sufficient	Fair	Self-extinguish
TFE Teflon	-200 / + 260	+ 310	Excellent	Excellent	Self-extinguish
KAP Kapton	-200 / + 400	+ 440	Fair	Good	Self-extinguish
TTS Glass fiber	-200 / + 500	+ 500	Poor	Poor	Incombustible
TTC Ceramic fiber	+ 1000	+ 1100	Poor	Poor	Incombustible

EASYUP CONFIGURATION

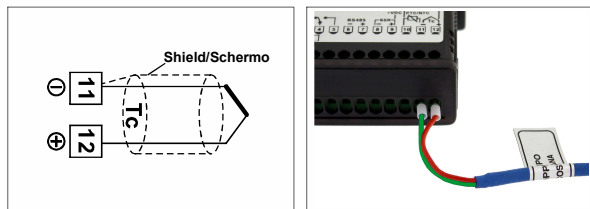
To simplify installation start-up, "EasyUp" mode allows to select type of sensor and to fix its measuring range on the controller by entering a password (see table below).

EASYUP CODE FOR THIS SENSOR :

2351

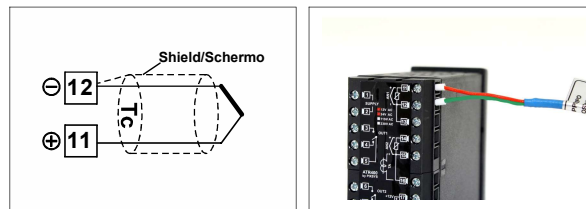
SENSOR SELECTION :	TCK
LOWER LIMIT :	-100°C
UPPER LIMIT :	+800°C

ATR142 CONNECTION



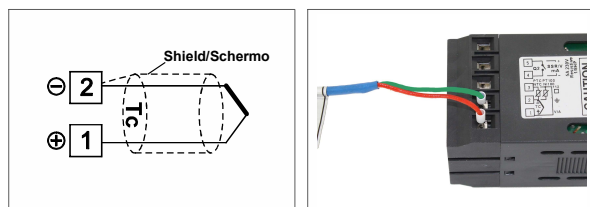
N.B. EasyUp on software version 1.12 or greater

ATR401 CONNECTION



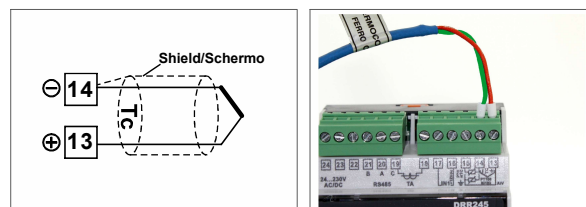
N.B. EasyUp on software version 1.01 or greater

ATR236 /243 CONNECTION



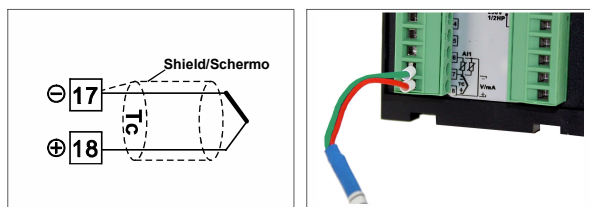
N.B. EasyUp on software version 1.18 or greater

DDR245 CONNECTION



N.B. EasyUp on software version 1.18 or greater

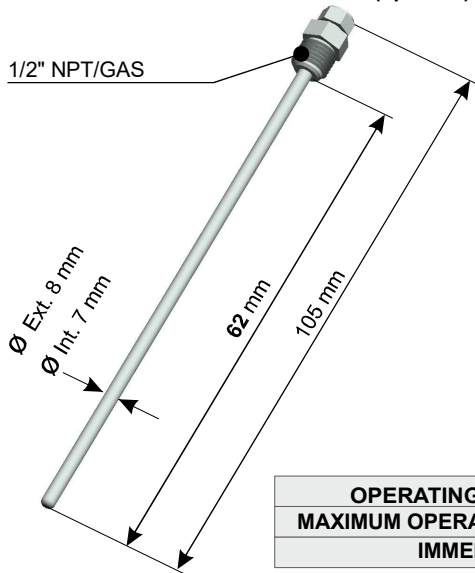
ATR621 / 171 CONNECTION



N.B. EasyUp on software version 1.01 or greater

THERMOWELL OR SLIDING JUNCTION

THERMOWELL Code : 2000.30.017 (optional)



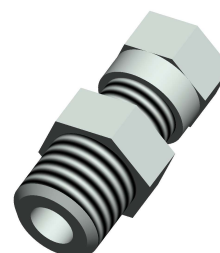
SLIDING JUNCTION : (optional)

Code : 2000.30.003 1/8" GAS at Ø 6 mm

Code : 2000.30.006 1/4" GAS at Ø 6 mm

Code : 2000.30.009 1/2" GAS at Ø 6 mm

MATERIAL : STEEL AISI 316L



OPERATING TEMPERATURE :	-100°C + 900°C
MAXIMUM OPERATING PRESSURE :	100 Bar
IMMERSION MATERIAL :	Steel AISI 316L (food industry)