

PIXSYS
electronics

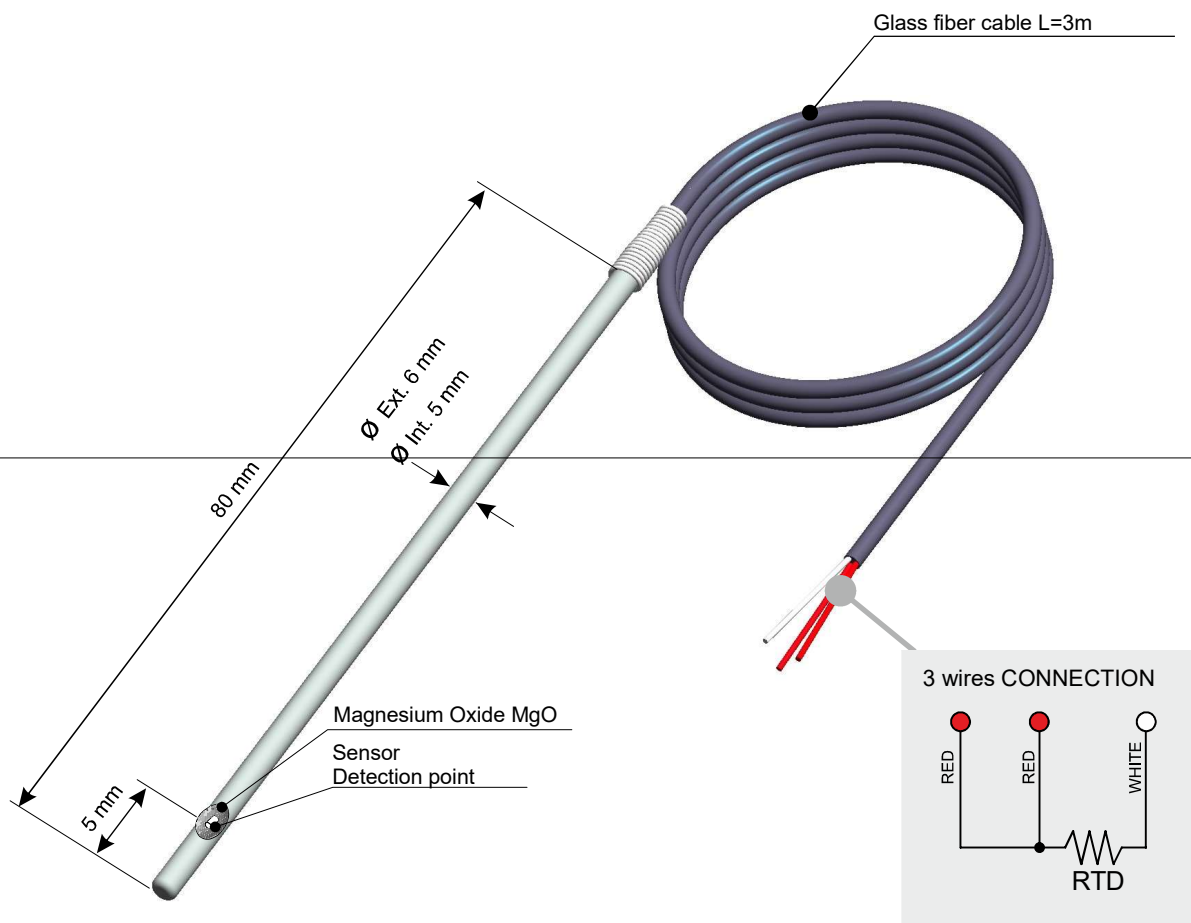
www.pixsys.net ☎ +39 041 5190518 R.A.

CODE : **2000.90.520**

PT100B-6x80-A304-0000-2,0TTS

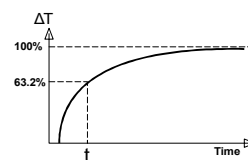
DESCRIPTION :

PT100B sensor 6x80 mm, 3 wires connection,
no process connection with 2m Glass fiber cable.



OPERATING TEMPERATURE :	-100°C + 250°C
HEAD MATERIAL :	Not available
IMMERSION MATERIAL :	Steel AISI 304
JUNCTION MATERIAL :	Not available
SENSOR INSULATION :	MgO Magnesium Oxide >20Mohm at 25°C (500Vdc)
TAPERING :	NO
CERTIFICATION :	NO
CABLE MATERIAL :	TTS Glass fiber

Response time of RTD with tube in steel AISI-316/304 MgO insulated, according to B.S. 1904/1984/CEI60751. 50mm water immersion at 1m/sec. speed calculated on 63,2% of thermal gradient, according to stem diameter and thickness.



CONNECTION CABLE FEATURES					
SHEATH MATERIAL	TEMPERATURE [°C]		ABRASION RESISTANCE	HUMIDITY RESISTANCE	FLAME BEHAVIOUR
	EXERCISE	INSTANTANEOUS			
PVC	-30 / + 105	+ 105	Good	Good	Self-extinguish
GSC Silicon rubber	-40 / + 250	+ 250	Sufficient	Fair	Self-extinguish
TFE Teflon	-200 / + 260	+ 310	Excellent	Excellent	Self-extinguish
KAP Kapton	-200 / + 400	+ 440	Fair	Good	Self-extinguish
TTS Glass fiber	-200 / + 500	+ 500	Poor	Poor	Incombustible
TTC Ceramic fiber	+ 1000	+ 1100	Poor	Poor	Incombustible

EXTERNAL DIAMETER	INTERNAL DIAMETER	t=Time
6 mm	5 mm	6,5 S
8 mm	7 mm	8,3 S
10 mm	9 mm	10,2 S

ACCORDING TO DIN EN 60751	TEMPERATURE	TOLERANCE
	°C	PT100 B Class (+/-°C)
	-200	1.3
	-100	0.8
	0	0.3
	100	0.8
	200	1.3
	300	1.8

EASYUP CONFIGURATION

To simplify installation start-up, "EasyUp" mode allows to select type of sensor and to fix its measuring range on the controller by entering a password (see table below).

EASYUP CODE FOR THIS SENSOR :

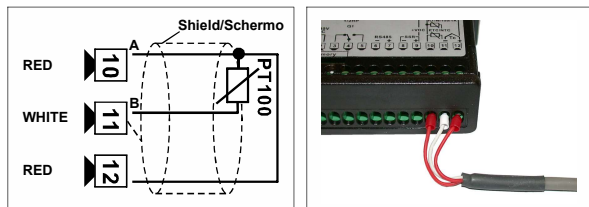
2201

SENSOR SELECTION : PT100

LOWER LIMIT : -100°C

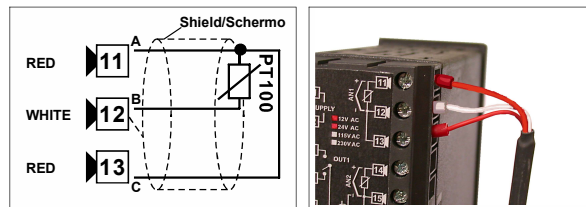
UPPER LIMIT : +250°C

ATR142 CONNECTION



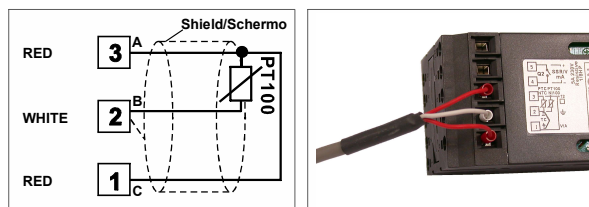
N.B. EasyUp on software version 1.12 or greater

ATR401 CONNECTION



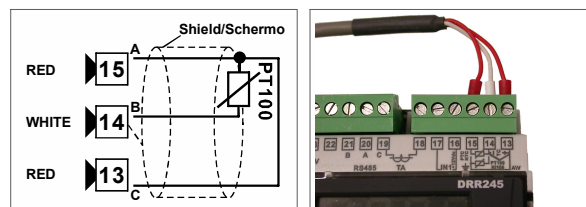
N.B. EasyUp on software 1.01 or greater

ATR236 /243 CONNECTION



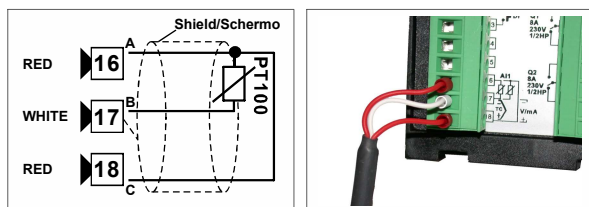
N.B. EasyUp on software version 1.18 or greater

DDR245 CONNECTION



N.B. EasyUp on software version 1.18 or greater

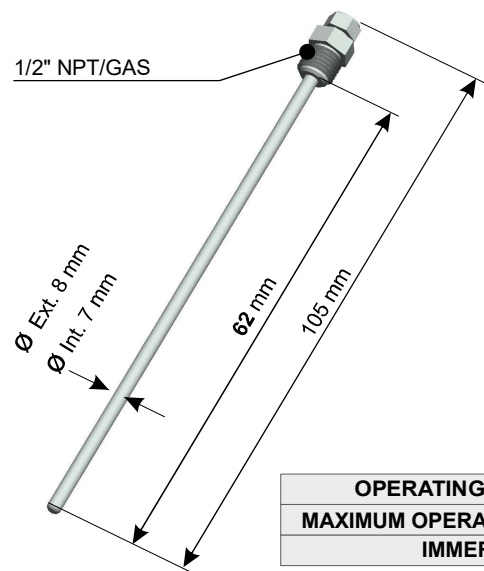
ATR621 / 171 CONNECTION



N.B. EasyUp on software version 1.01 or greater

THERMOWELL OR SLIDING JUNCTION

THERMOWELL Code : 2000.30.017 (optional)



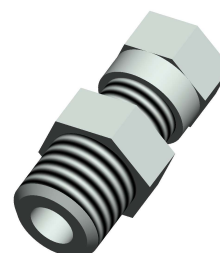
SLIDING JUNCTION :
(optional)

Code : 2000.30.003 1/8" GAS at Ø 6 mm

Code : 2000.30.006 1/4" GAS at Ø 6 mm

Code : 2000.30.009 1/2" GAS at Ø 6 mm

MATERIAL : STEEL AISI 316L



OPERATING TEMPERATURE :	-100°C + 900°C
MAXIMUM OPERATING PRESSURE :	100 Bar
IMMERSION MATERIAL :	Steel AISI 316L (food industry)