

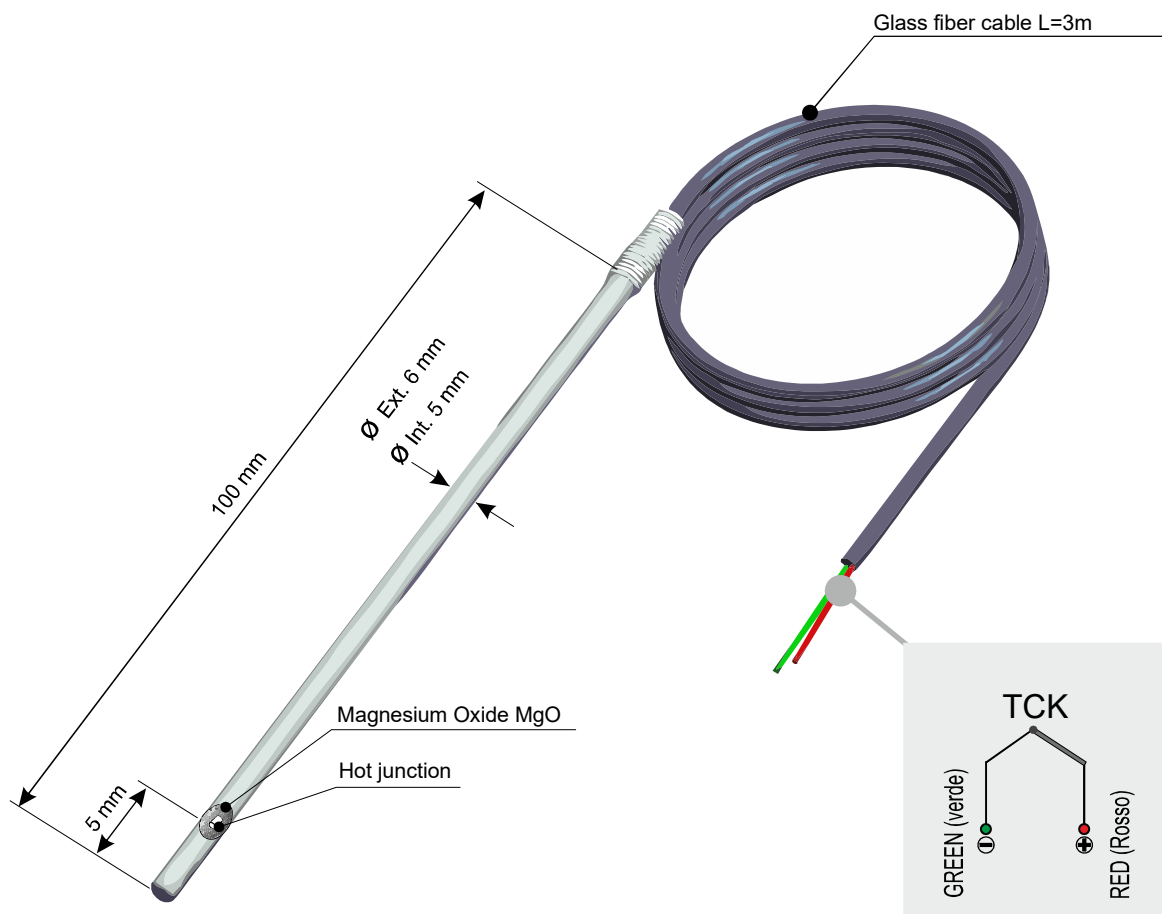
PIXSYS
electronics

www.pixsys.net ☎ +39 041 5190518 R.A.

CODE : **2000.90.537**

TCK-6x100-A316-0000-3,0TTS-IS-1,02

DESCRIPTION :
TCK sensor 6x100 mm, A316 MGO insulated,
no process connection with 3m glass fiber cable.



OPERATING TEMPERATURE :	-100 +600°C
JUNCTION :	Cromel - Alumel > Wire diam. 1.02
HEAD MATERIAL :	Not available
IMMERSION MATERIAL :	ACCIAIO A316 Temp. max. di lavoro : 900°C
JUNCTION MATERIAL :	Not available
SENSOR INSULATION :	MgO Magnesium Oxide >20Mohm at 25°C (500Vdc)
TAPERING :	NO
CERTIFICATION :	NO
CABLE MATERIAL :	TTS Glass fiber
ACCORDING TO :	DIN 43710

CONNECTION CABLE FEATURES					
SHEATH MATERIAL	TEMPERATURE [°C]		ABRASION RESISTANCE	HUMIDITY RESISTANCE	FLAME BEHAVIOUR
	EXERCISE	INSTANTANEOUS			
PVC	-30 / + 105	+ 105	Good	Good	Self-extinguish
GSC Silicon rubber	-40 / + 250	+ 250	Sufficient	Fair	Self-extinguish
TFE Teflon	-200 / + 260	+ 310	Excellent	Excellent	Self-extinguish
KAP Kapton	-200 / + 400	+ 440	Fair	Good	Self-extinguish
TTS Glass fiber	-200 / + 500	+ 500	Poor	Poor	Incombustible
TTC Ceramic fiber	+ 1000	+ 1100	Poor	Poor	Incombustible

EASYUP CONFIGURATION

To simplify installation start-up, "EasyUp" mode allows to select type of sensor and to fix its measuring range on the controller by entering a password (see table below).

EASYUP CODE FOR THIS SENSOR :

2352

SENSOR SELECTION :

TCK

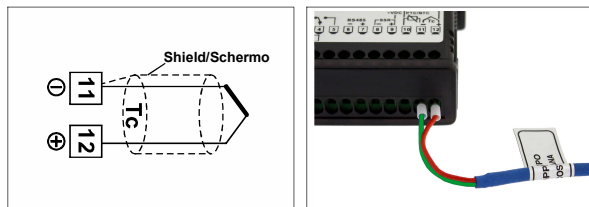
LOWER LIMIT :

-100°C

UPPER LIMIT :

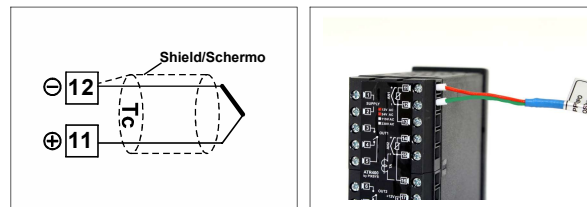
+600°C

ATR142 CONNECTION



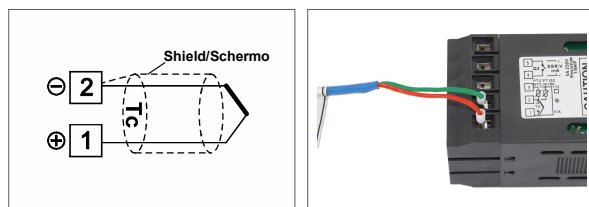
N.B. EasyUp on software version 1.12 or greater

ATR401 CONNECTION



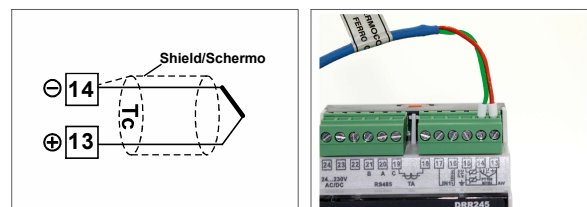
N.B. EasyUp on software version 1.01 or greater

ATR236/243 CONNECTION



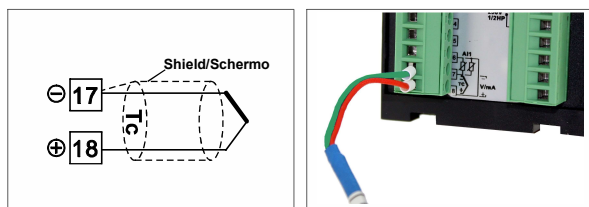
N.B. EasyUp on software version 1.18 or greater

DDR245 CONNECTION



N.B. EasyUp on software version 1.18 or greater

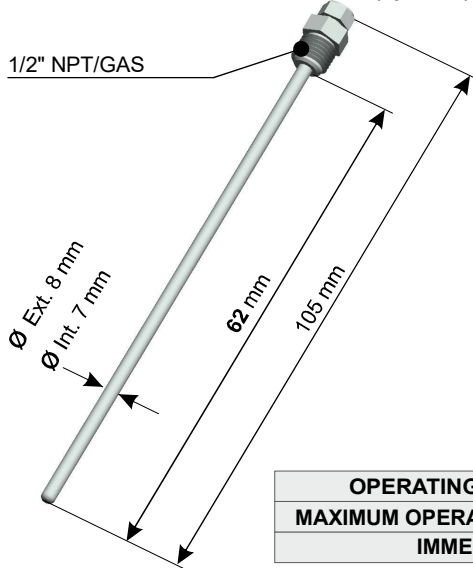
ATR621/171 CONNECTION



N.B. EasyUp on software version 1.01 or greater

THERMOWELL OR SLIDING JUNCTION

THERMOWELL Code : 2000.30.017 (optional)



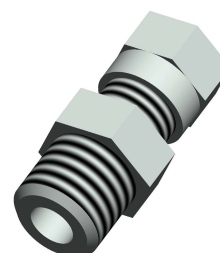
SLIDING JUNCTION :
(optional)

Code : 2000.30.003 1/8" GAS at Ø 6 mm

Code : 2000.30.006 1/4" GAS at Ø 6 mm

Code : 2000.30.009 1/2" GAS at Ø 6 mm

MATERIAL : STEEL AISI 316L



OPERATING TEMPERATURE : -100°C + 900°C

MAXIMUM OPERATING PRESSURE : 100 Bar

IMMERSION MATERIAL : Steel AISI 316L (food industry)