

# Industrial Ethernet-Connector, RJ45, EasyConnect®, 180°, 700-901-1BB12

Version: 2 / 29.10.2019

## Intended Use

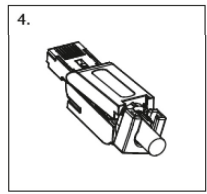
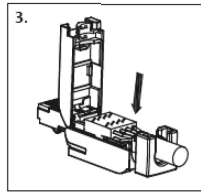
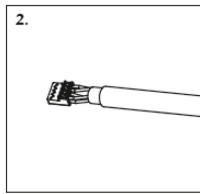
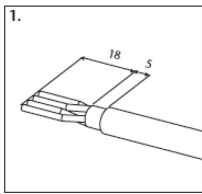
The field-assembled RJ45 connector for Industrial Ethernet is easy and quick to install. With an Industrial Ethernet cable, IE components can be connected. In addition, the RJ45 connectors are designed in protection class IP20 and for transmission rates up to 1000 Mbps.

## Features

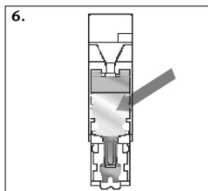
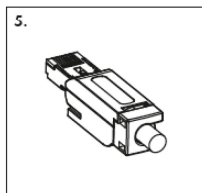
- Color-coded contact elements help to avoid connection errors
- Transmission rates up to 1000 Mbps
- Tool-free installation
- EasyConnect® RJ45 connection (IDC) for industrial applications
- Suitable for cables up to Cat.6
- 180° cable outlet



## Assembly instructions



1.	Strip the cable by approx. 23mm. Then turn back the braid over the cable sheath and cut it to around 5mm. Arrange the cable cores according to the color coding on top of the terminal block
2.	Insert four cores in the correct order into the four upper openings, then the four other cores into the bottom openings. Afterwards cut the excess wires
3.	Align the terminal block correctly over the insulation-displacement contacts and press the block down
4.	Close the top cover by rotating the front cap clockwise into the correct position



5.	Now rotate the front cap into the final position y rotating it clockwise, if need be by using a tool on the rectangular openings on the cap`s backside
6.	Release: Completely insert plug and mechanically relieve. Then push the release spring down at the marked position



**Attention:** If the device is used in a manner not specified by the manufacturer, the protection provided by the device may be affected. Pay special attention to the correct contact during cable installation and when plugging in and unplugging the plug. If you have problems, always read the latest documentation first, which can be found on the Internet at [www.helmholz.com](http://www.helmholz.com). Connected circuits shall meet the requirements of Limited energy circuits acc. UL61010-1

## Technical data

<b>Order no.</b>	<b>700-901-1BB12</b>
Name	IE-Connector, RJ45, EasyConnect®, 180°
General information	
- Scope of delivery	IE-Connector, manual
- Dimensions (WxDxH)	14 x 16 x 56 mm
- Weight	approx. 30g
PROFINET-Interface	
- Number	1
- Type	Ethernet
- Connection	RJ45 connector
- Transmission rate	Up to 1000 Mbit/s
Connector	
- Cable outlet	180°
- Connector type	EasyConnect® (IDC connection)
- Connectible cables	Industrial Ethernet cable
- Cable cross section	8 x 24 AWG
- Maximum outside diameter	8,2 mm
Ambient conditions	
- Ambient temperature	-30 °C ... +70 °C
- Transport and storage temperature	-40 °C ... +80 °C
- Relative air humidity	95 % r. H. without condensation
- Protection rating	IP20
- Certifications	CE, UL
UL	UL 61010-1 and UL 61010-2-201
- Pollution degree	2
- Ratings	DC 2,8 V / 28 mA
- Use	Dry, indoor use

Note:

*The content of this document has been checked by us for compliance with the hardware described. However, as deviations are not excluded, we can not assume any warranty for full compliance, the information in this document is updated regularly. When using the purchased products, please note the latest version of the document, which can be downloaded from the Internet at [www.helmholz.com](http://www.helmholz.com).*