

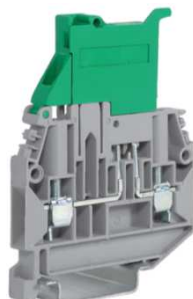
## CBF.4 - FUSE HOLDERS

For 5x20 mm fuses, with possibility to detect the fuse blow-out status, by means of a LED micro-circuit (CIL/..)

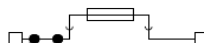
Available in grey colour or (Ex)i "intrinsic safety" circuits versions

Mounting onto PR/3 type rails according to IEC 60715 - TH/35 type

Two slots meant for insert permanent cross-connection "Easy Bridge"



Grey version		CBF.4/GR	
		Cat. No.	<b>CBF04GR</b>
(Ex)i version		CBF.4 (Ex)i	
		Cat. No.	<b>CBF04I</b>
Technical Characteristics			
Function/Type			
Rated cross-section		(mm <sup>2</sup> )	<b>4</b>
Connecting capacity			
flexible		(mm <sup>2</sup> )	0,2 ÷ 6
rigid		(mm <sup>2</sup> )	0,2 ÷ 6
max. flexible with ferrule		(mm <sup>2</sup> ) - ferrule	4 - WP40/16
Rated voltage/ rated current/ gauge Conf to		IEC 60947-7-1	630V / 6,3A max(20A con CO/5) / A4
Rated current for single use			10A
Rated voltage/ rated current/ AWG		Conf to UL	-
Rated voltage/ rated current/ (Ex) e			-
Rated impulse withstand voltage/ pollution degree			6 kV / 3
Insulation stripping length		(mm)	10
Tightening torque value (test/ max)		(Nm)	0,5 / 1
Height/ width/ thickness		TH735 7,5 mm	76 / 57 / 6
Height/ width/ thickness		TH/35 15 mm	83 / 57 / 6
APPROVALS			
ACCESSORIES			
End sections		grey	<b>CB/PT/GR</b> CB401GR
		blue	<b>CB/PT (Ex)i</b> CB402
		2 poles	<b>PTC/4/02</b> PTC0402
		3 poles	<b>PTC/4/03</b> PTC0403
Permanent cross connection (*) (intrinsically IPXXB once mounted)		5 poles	<b>PTC/4/05</b> PTC0405
		10 poles	<b>PTC/4/10</b> PTC0410
		42 poles	<b>PTC/4/00</b> PTC0400
Rated current carrying capacity of jumper		(A)	<b>32</b>
Cross-connection identification strip			<b>PTC/SP</b> PT0990
Coloured partition		red	<b>PTC/SP</b> PT0990
Cross connection partition		red	<b>DFU/7/R</b> DU07R
Numbering streep			-
Miniature fuse			<b>F5</b> FN...
Marking tag		printed or blank	<b>CNU/8/51</b> NU0851
End bracket			<b>BTU</b> for PR/DIN and PR/ <b>BT005</b> <b>BT/3-BTO</b> only for PR/3 <b>BT003-BT007</b>



For 5 x 20mm fusers

# Fuse-holder/diode-holder

## with UL94V-0 polyamide insulating body



- mounting onto PR/3, TH/35 type rails, according to IEC 60715 Std.
- two-levels: upper: fuse-holder / diode holder; lower: feed-through
- for  $\varnothing 5 \times 20$  mm fuses (supplied separately) with possibility to detect the fuse-blowout status, by means of a LED micro-circuit (CIL...)
- for 1 A diodes (types 1N4001 ÷ 1N4007)
- for 3 A diodes (types BY255)
- Available in grey colour (RAL 7042)

The /GR tag indicates the grey colour version.

<b>grey version</b>
<b>beige version</b>

TECHNICAL CHARACTERISTICS	
function / type	
rated cross-section	(mm <sup>2</sup> )
connecting capacity	
flexible	(mm <sup>2</sup> )
rigid	(mm <sup>2</sup> )
max. flexible with ferrule (mm <sup>2</sup> )-ferrule type	
rated voltage / rated current / gauge	conf. to IEC 60947-7-1
rated voltage / rated current / AWG / tightening torque value	UL
(Ex e) rated voltage  /	(V)
rated impulse withstand voltage / pollution degree	
insulation stripping length	(mm)
tightening torque value (test / max)	(Nm)
height / width / thickness	TH/35 7,5 mm
height / width / thickness	TH/35 15 mm
height / width / thickness	G32

### APPROVALS

ACCESSORI	
End sections	grey beige blue
Coloured partition	red, green, white
Cross connection barrier	red
Test plug socket	
Numbering strip	
Miniature fuse	$\varnothing 5 \times 20$ mm
Conducting element	$\varnothing 5 \times 20$ mm
LED circuit composed by:	non-polarised
- 2 contacts	
- 1 microcircuit	
- 1 transparent cover - to be inserted in such a sequence	
Marking tag	printed or blank
Terminal block with LED 12 ÷ 48 V non polarised micro-circuit	
Terminal block with LED 115 ÷ 230 V non polarised micro-circuit	
1 A cartridge / insert	
3 A cartridge / insert	
Terminal block with 1 A diode	
Terminal block with 3 A diode	
End bracket	
Mounting rail	
according to IEC 60715 Std.	

<b>DSF.4/GR</b>	Cat. No. <b>DA200GR</b>
-----------------	-------------------------

<b>DSF.4</b>	Cat. No. <b>DA200</b>
--------------	-----------------------

On two levels: $\varnothing 5 \times 20$ mm fuse-holder (upper level) - feed-through (lower level)
4
0,2 ÷ 6
0,2 ÷ 6
4 - WP40/16
800 V / [6,3 A (10 A with CO/5) (upper lever)] - 32 A (lower level) / A4
-
8 kV / 3
9
0,5 / 1,2
69 / 79,5 / 8
77 / 79,5 / 8
- / - / -

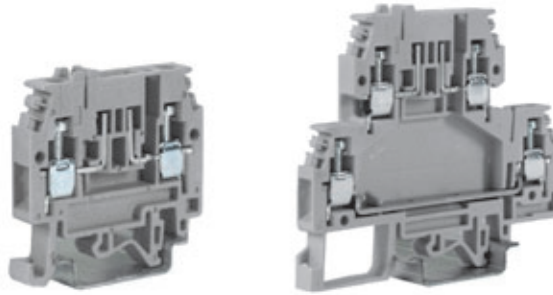
KEMA-KEUR, UL pending

Type	Cat. No.
<b>DSF.4/PT/GR</b>	DS401GR
<b>DFU/7</b>	DU07..
-	
-	
-	
<b>F5/...</b>	FN...
<b>CO/5</b>	VL103
<b>CIL/12-48</b>	SF518
<b>CIL/115-230</b>	SF510
<b>CNU/8</b>	NU08...
<b>CNU/10</b>	NU10...
<b>DSF.4/GR/C12-48</b>	DA518GR
<b>DSF.4/GR/C115-230</b>	DA510GR
<b>SFR/11A</b> (con diodo da 1 A)	SF992
<b>SFR/13A</b> (con diodo da 3 A)	SF993
<b>DSF.4/GR/D1A</b>	DA901GR
<b>DSF.4/GR/D3A</b>	DA903GR
<b>BTU</b> per PR/DIN e PR/3	BT005
<b>BT/3-BTO</b> solo per PR/3	BT003-BT007
<b>PR/3/AC</b> per PR/DIN e PR/3	PR003
<b>PR/3/AS</b> idem con asole	PR005

# Fuse-holders

## with UL94V-0 polyamide insulating body

- for blade fuse acc. to DIN 72581/3F – ISO 8820
- standard versions available in grey RAL 7042 and beige RAL 1001 colours (where indicated)
- with possibility to insert the “Easy Bridge” multi-pole cross connection upstream the fuse
- universal mounting onto both PR/DIN and PR/3 type rails - according to IEC 60715 Std., “G32” and “TH/35” types



- (\*) value referred to the insulation characteristics of the terminal block
- (\*\*) values referred, respectively, to lower and upper levels
- (\*\*\*) suitable for all the blade fuses with similar dimensions
- (\*\*\*\*) separate configuration conf. to IEC 60947-7-3

PTC jumper configurations					
SINGLE OR PARALLEL EXTENDING	POLE SKIPPING	ADJACENT WITHOUT BARRIER	ADJACENT WITH BARRIER	STAGGERED MODE	PARALLEL SKIPPING

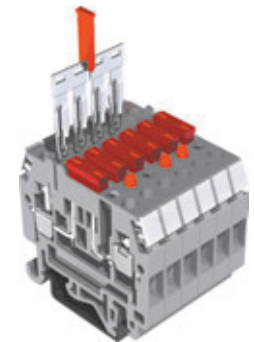
Terminal block	Jumper	Insulation voltage in the above configurations (V)			
MPFA.4	PTC/4	400	400	400	400
DSFA.4	PTC/4	400	400	400	400

The /GR tag indicates the grey colour version.

grey version	
beige version	
TECHNICAL CHARACTERISTICS	
function / type	
rated cross-section (mm <sup>2</sup> )	4
connecting capacity	
flexible (mm <sup>2</sup> )	0,2 ÷ 6
rigid (mm <sup>2</sup> )	0,2 ÷ 6
max. flexible with ferrule (mm <sup>2</sup> )-ferrule type	4 - WP40/16
rated voltage / rated current / gauge conf. to IEC 60947-7-1	400 V (*) / 15 A (****) / A4
rated voltage / rated current / AWG / tightening torque value UL (Ex e) rated voltage	600 V / 6,3 A / 26-10 AWG / 4,4 lb.in
rated impulse withstand voltage / pollution degree	6 kV (*) / 3
insulation stripping length (mm)	9
tightening torque value (test / max) (Nm)	0,5 / 1,2
height / width / thickness	47 / 47 / 6
height / width / thickness	55 / 47 / 6
height / width / thickness	51 / 47 / 6

MPFA.4/GR	
Cat. No.	MF100GR
MPFA.4	
Cat. No.	MF100
for blade fuse (***)	4
0,2 ÷ 6	
0,2 ÷ 6	
4 - WP40/16	
400 V (*) / 15 A (****) / A4	
600 V / 6,3 A / 26-10 AWG / 4,4 lb.in	
6 kV (*) / 3	
9	
0,5 / 1,2	
47 / 47 / 6	
55 / 47 / 6	
51 / 47 / 6	

DSFA.4/GR	
Cat. No.	DA100GR
DSFA.4	
Cat. No.	DA100
2 level - for blade fuse (***) on the upper level	4
0,2 ÷ 6	
0,2 ÷ 6	
4 - WP40/16	
400 V (*) / 15 A (****) - 32 A (**) / A4	
300 V / 6,3 - 30 A / 26-10 AWG / 4,4 lb.in	
6 kV / 3	
9	
0,5 / 1,2	
68 / 78 / 6	
75 / 78 / 6	
72 / 78 / 6	



**MPFA.4** – detail of the terminal blocks with CNU/8 and SNZ/60 numbering, blade fuse, view of the PTC/4 and PTC. The terminal block can be supplied with a non-polarised LED signal circuit, to detect the fuse blow-out status. Two versions are available depending on the different supply voltages. **MPFA.4/L12** Cat. No.MF112 (with 12 V non-polarised LED circuit) **MPFA.4/L24** Cat. No.MF124 (with 24 V non-polarized LED circuit)

## APPROVALS



Approvals referred to the use with CPF/5 fuse carrier cartridge



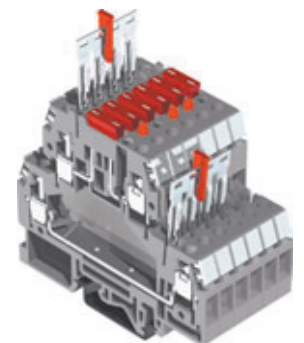
Approvals referred to the use with CPF/5 fuse carrier cartridge

## ACCESSORIES

End sections	grey beige blue
Permanent cross connection (intrinsically IPXXB protected once mounted)	
Rated current carrying capacity of jumper (A)	
Cross-connection identification strip (100 mm)	green
Switchable cross connection	
Multiple common bar	250 mm
Shunting screw and sleeve	
Coloured partition	red, green, white
Cross connection barrier	red
Test plug socket	
Test plug	
Modular test plug	
End section for modular test plug	
Blade-type fuses	In = 2 A In = 5 A - max voltage 32 V In = 7,5 A In = 15 A
Marking tag	printed or blank
End bracket	
Mounting rail according to IEC 60715 Std.	

Type	Cat. No.
<b>MPS.4/PT/GR</b>	MP901GR
<b>MPS.4/PT</b>	MP901
-	-
<b>PTC/4/02</b> poles	PTC0402
<b>PTC/4/03</b> poles	PTC0403
<b>PTC/4/05</b> poles	PTC0405
<b>PTC04/10</b> poles	PTC0410
<b>PTC/4/00</b> (42 poles)	PTC0400
<b>32</b>	
<b>PTC/SP</b>	PTC0990
-	-
-	-
<b>DFU/3</b>	DU03..
<b>DFM/500</b>	DF500
-	-
-	-
-	-
<b>F32/2</b> In = 2 A	FN03202
<b>F32/5</b> In = 5 A	FN03205
<b>F32/7</b> In = 7,5 A	FN03207
<b>F32/15</b> In = 15 A	FN03215
<b>CNU/8/51</b>	NU0851
<b>BTU</b> for PR/DIN and PR/3	BT005
<b>BT/DIN/PO</b> for PR/DIN only	BT001
<b>BT/3-BTO</b> for PR/3 only	BT003-BT007
<b>PR/DIN/AC</b> of steel	PR001
<b>PR/DIN/AS</b> same with slots	PR004
<b>PR/DIN/AL</b> of aluminium	PR002
<b>PR/3/AC</b> for PR/DIN and PR/3	PR003
<b>PR/3/AS</b> same with slots	PR005

Type	Cat. No.
<b>DSS/PT/GR</b>	DS301GR
<b>DSS/PT</b>	DS301
-	-
<b>PTC/4/02</b> poles	PTC0402
<b>PTC/4/03</b> poles	PTC0403
<b>PTC/4/05</b> poles	PTC0405
<b>PTC04/10</b> poles	PTC0410
<b>PTC/4/00</b> (42 poles)	PTC0400
<b>32</b>	
<b>PTC/SP</b>	PTC0990
-	-
-	-
<b>DFU/7</b>	DU07..
<b>DFM/500</b>	DF500
-	-
-	-
-	-
<b>F32/2</b> In = 2 A	FN03202
<b>F32/5</b> In = 5 A	FN03205
<b>F32/7</b> In = 7,5 A	FN03207
<b>F32/15</b> In = 15 A	FN03215
<b>CNU/8/51</b>	NU0851
<b>BTU</b> for PR/DIN and PR/3	BT005
<b>BT/DIN/PO</b> for PR/DIN only	BT001
<b>BT/3-BTO</b> for PR/3 only	BT003-BT007
<b>PR/DIN/AC</b> of steel	PR001
<b>PR/DIN/AS</b> same with slots	PR004
<b>PR/DIN/AL</b> of aluminium	PR002
<b>PR/3/AC</b> for PR/DIN and PR/3	PR003
<b>PR/3/AS</b> same with slots	PR005



**DSFA.4** – detail of the terminal blocks with CNU/8 and SNZ/60 numbering, blade fuse, view of the PTC/4 jumpers on the upper level (upstream the fuse) and on the lower level. The terminal block can be supplied with a non-polarised LED signal circuit, to detect the fuse blow-out status. Two versions are available depending on the different supply voltages. **DSFA.4/L12** Cat. No.DA112 (with 12 V non-polarised LED circuit) **DSFA.4/L24** Cat. No.DA124 (with 24 V non-polarised LED circuit)