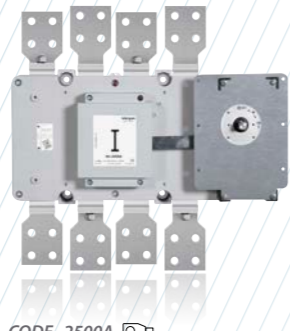


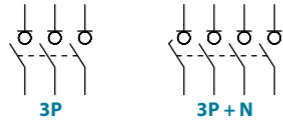
# S5000 AC Switch - disconnecter base mounting 3P - 3P+N

Size 5

A 2000|2500|3150



	CODE-2000A	CODE-2500A	CODE-3150A
3P	S5-20003PP0	S5-25003PP0	S5-31503PP0
3P + N	S5-20003NP0	S5-25003NP0	S5-31503NP0



## Technical information

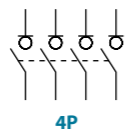


tests:

According to IEC/EN 60947-3

			2000	2500	3150
Rated thermal current in ambient at RH 60%	Ith	40 °C	A 2000	2500	3150
		50 °C	A 2000	2500	2835
Rated insulation voltage	Ui	60 °C	A 2000	2500	2520
			V 1000	1000	1000
Rated dielectric strength		50 Hz, 1 min.	V 10000	10000	10000
Rated impulse withstand voltage	Uimp		kV 8	8	8
AC rated operational current <sup>(1)</sup> (Rated operational frequency 50/60 Hz)	Ue 400V	AC21A	A 2000	2500	3150
		AC22A	A 2000	2500	2500 <sup>(5)</sup>
	Ue 500V	AC21A	A 2000	2500	3150
		AC22A	A 2000 <sup>(5)</sup>	2200 <sup>(5)</sup>	2200 <sup>(5)</sup>
	Ue 500V	AC23A	A 1250	1600 <sup>(5)</sup>	1600 <sup>(5)</sup>

			2000	2500	3150
AC rated operational power <sup>(2)</sup>	Pe	3x400V AC23A	kW 886,8	997,6	1108,5
Rated capacitor power	400V, sen φ = 0,65	kVAr	720,5	810,5	900,6
Rated breaking capacity	400V AC23A	A	12800	14400	16000
Rated making capacity	400V AC23A	A	16000	18000	20000
<b>Short - circuit behaviour</b>					
Rated short-circuit making capacity <sup>(3)</sup>	Icm	kA (peak)	100	100	100
Rated short-time withstand current (1 sec.)	Icw	kA rms	50	50	50
<b>Mechanical features</b>					
Minimum number of mechanical operations <sup>(4)</sup>	Cycles		2500	2500	2500
Maximum weight 3P		Kg	50	50	50
Maximum weight 3P+N		Kg	58	58	58



Also available 4P switches under request, consult reference

<sup>(1)</sup> Other voltages and / or utilization categories. Please consult  
<sup>(2)</sup> Indicative values: current values vary from one motor manufacturer to another  
<sup>(3)</sup> Without limiting protective device (short-circuit maintained 50... 200 ms.)  
<sup>(4)</sup> Please consult us for more operations  
<sup>(5)</sup> Rated operational current AC22B



## Accessories



Direct handle  
CODE DS-LI41



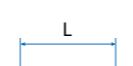
Panel handle included shaft <sup>(e1)</sup>  
IP65|UL50E/NEMA 250  
Types: 1, 3R, 4, 4X y 12  
CODE DS-LA41



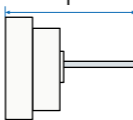
Panel handle without shaft  
IP65|UL50E/NEMA 250  
Types: 1, 3R, 4, 4X y 12  
CODE DS-LA43



Emergency panel handle included shaft <sup>(e1)</sup>  
IP65|UL50E/NEMA 250  
Types: 1, 3R, 4, 4X y 12  
CODE DS-LR41



Shafts  
Standard shaft included <sup>(e1)</sup>  
L (mm) | P (mm)  
239 | 420... 580

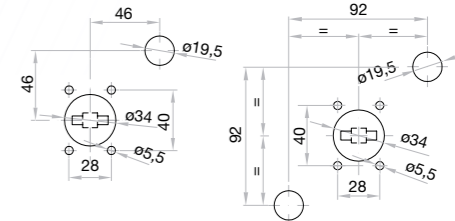


Auxiliary contacts  
1NA+1NC CODE DS-AU11  
2NA+2NC CODE DS-AU12  
Ie = 16 A (resistive loads)  
4 A (inductive loads) at 250 Vac.

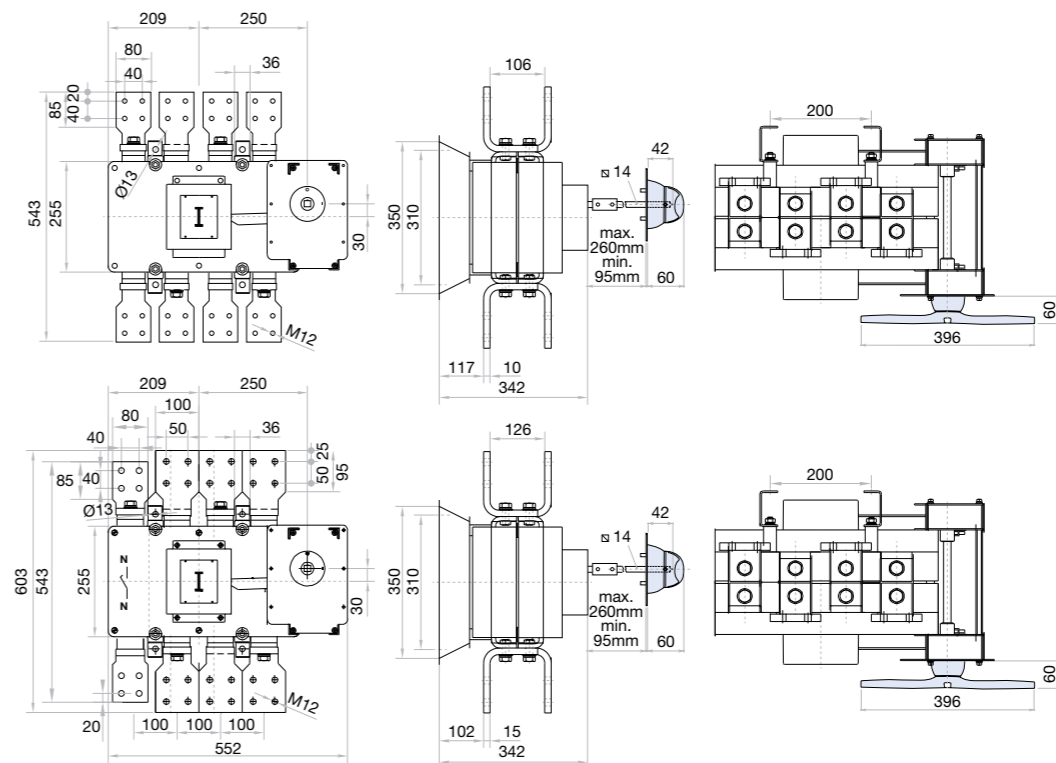


Safety key lock device  
Simple CODE DS-CB41  
Double CODE DS-CF41  
For external handle, lock the handle by means of a key in position "OFF" (under request, in "ON"), the key can only be removed with the handle locked

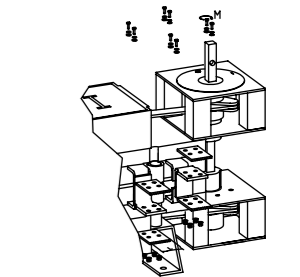
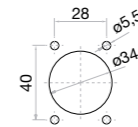
Panel drilling for handle and keylock device  
Simple Double



## Dimensions (mm)



Panel drilling for panel handle



	H max (Cu)	L max (Cu)	M
2000 A	4x10	80	M12
2500 A	4x10	80	M12

	H max (Cu)	L max (Cu)	M
3150 A	4x10	100	M12