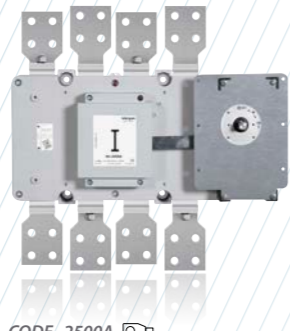


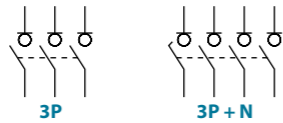
S5000 AC Switch - disconnecter base mounting 3P - 3P+N

Size 5

A 2000|2500|3150



	CODE-2000A	CODE-2500A	CODE-3150A
3P	S5-20003PP0	S5-25003PP0	S5-31503PP0
3P + N	S5-20003NP0	S5-25003NP0	S5-31503NP0



Technical information

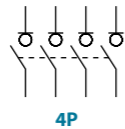
According to IEC/EN 60947-3



tests:

		2000		2500		3150	
Rated thermal current in ambient at RH 60%	Ith	40 °C	A 2000	2500	3150		
		50 °C	A 2000	2500	2835		
Rated insulation voltage	Ui	60 °C	A 2000	2500	2520		
			V 1000	1000	1000		
Rated dielectric strength			V 10000	10000	10000		
Rated impulse withstand voltage	Uimp		kV 8	8	8		
AC rated operational current ⁽¹⁾ (Rated operational frequency 50/60 Hz)	Ue 400V	AC21A	A 2000	2500	3150		
		AC22A	A 2000	2500	2500 ⁽⁵⁾		
	Ue 500V	AC21A	A 2000	2500	3150		
		AC22A	A 2000 ⁽⁵⁾	2200 ⁽⁵⁾	2200 ⁽⁵⁾		
	Ue 500V	AC23A	A 1250	1600 ⁽⁵⁾	1600 ⁽⁵⁾		

		2000		2500		3150	
AC rated operational power ⁽²⁾	Pe	3x400V	AC23A	kW 886,8	997,6	1108,5	
Rated capacitor power		400V, sen φ = 0,65	kVAr 720,5	810,5	900,6		
Rated breaking capacity		400V	AC23A	A 12800	14400	16000	
Rated making capacity		400V	AC23A	A 16000	18000	20000	
Short - circuit behaviour							
Rated short-circuit making capacity ⁽³⁾	Icm		kA (peak) 100	100	100		
Rated short-time withstand current (1 sec.)	Icw		kA rms 50	50	50		
Mechanical features							
Minimum number of mechanical operations ⁽⁴⁾		Cycles 2500	2500	2500			
Maximum weight 3P		Kg 50	50	50			
Maximum weight 3P+N		Kg 58	58	58			



Also available 4P switches under request, consult reference

⁽¹⁾ Other voltages and / or utilization categories. Please consult
⁽²⁾ Indicative values: current values vary from one motor manufacturer to another
⁽³⁾ Without limiting protective device (short-circuit maintained 50... 200 ms.)
⁽⁴⁾ Please consult us for more operations
⁽⁵⁾ Rated operational current AC22B

Accessories



Direct handle
CODE DS-LI41



Panel handle included shaft ^(e1)
IP65|UL50E/NEMA 250
Types: 1, 3R, 4, 4X y 12
CODE DS-LA41



Panel handle without shaft
IP65|UL50E/NEMA 250
Types: 1, 3R, 4, 4X y 12
CODE DS-LA43



Emergency panel handle included shaft ^(e1)
IP65|UL50E/NEMA 250
Types: 1, 3R, 4, 4X y 12
CODE DS-LR41



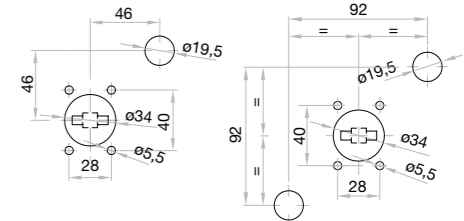
Auxiliary contacts
1NA+1NC CODE DS-AU11
2NA+2NC CODE DS-AU12
Ie = 16 A (resistive loads)
4 A (inductive loads) at 250 Vac.



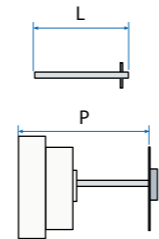
Safety key lock device
Simple CODE DS-CB41
Double CODE DS-CF41

For external handle, lock the handle by means of a key in position "OFF" (under request, in "ON"), the key can only be removed with the handle locked

Panel drilling for handle and keylock device
Simple Double

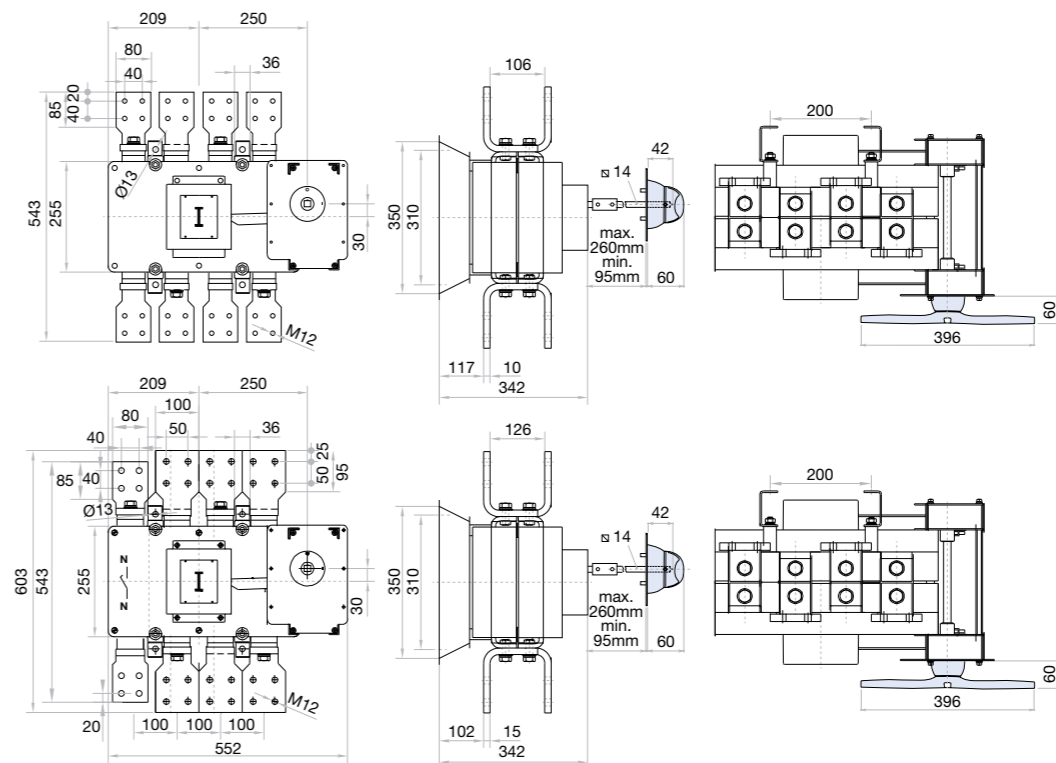


Shafts

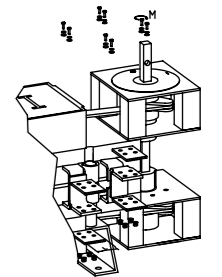
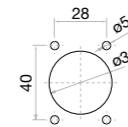


Standard shaft included ^(e1)
L (mm) | P (mm)
239 | 420... 580

Dimensions (mm)



Panel drilling for panel handle



	H max (Cu)	L max (Cu)	M
2000 A	4x10	80	M12 45
2500 A			

	H max (Cu)	L max (Cu)	M
3150 A	4x10	100	M12 45

