

**Pixsys**  
ELECTRONICS

# LOGICLAB AND MOVICON<sup>®</sup> INSTALLATION GUIDE

|   |                      |          |            |
|---|----------------------|----------|------------|
|  | <h1>USER MANUAL</h1> | Edition: | 1          |
|   |                      | Up-date: | 0          |
|   |                      | Date:    | 28/05/2019 |
|   |                      | Page:    | 2 of 12    |

## LIST OF EDITIONS AND UP-DATES

| Edition | Up-date | Date | Amendments | Editors | Checked & Approved |
|---------|---------|------|------------|---------|--------------------|
| 0       | 0       |      |            |         |                    |
|         | 1       |      |            |         |                    |
| 1       | 0       |      |            |         |                    |
|         | 1       |      |            |         |                    |
|         | 2       |      |            |         |                    |
|         | 3       |      |            |         |                    |

|   |                      |          |            |
|---|----------------------|----------|------------|
|  | <h1>USER MANUAL</h1> | Edition: | 1          |
|   |                      | Up-date: | 0          |
|   |                      | Date:    | 28/05/2019 |
|   |                      | Page:    | 3 of 12    |

# TABLE OF CONTENTS

- 0 Introduction..... 4**
- 1 Logilab Installation..... 5**
  - 1.1 Step 1 ..... 5
  - 1.2 Step 2 ..... 5
  - 1.3 Step 3 ..... 6
  - 1.4 Step 4 ..... 6
  - 1.5 Step 5 ..... 7
  - 1.6 Step 6 ..... 7
  - 1.7 Step 7 ..... 8
  - 1.8 Step 8 ..... 8
- 2 Movicon® Installation..... 9**
  - 2.1 Step 1 ..... 9
  - 2.2 Step 2 ..... 9
  - 2.3 Step 3 ..... 10
  - 2.4 Step 4 ..... 10
  - 2.5 Step 5 ..... 11
  - 2.6 Step 6 ..... 11
- 3 “Pixsys SoftPLC driver” installation ..... 12**
  - 3.1 Pixsys SoftPLC driver ..... 12

|   |                      |          |            |
|---|----------------------|----------|------------|
|  | <h1>USER MANUAL</h1> | Edition: | 1          |
|   |                      | Up-date: | 0          |
|   |                      | Date:    | 28/05/2019 |
|   |                      | Page:    | 4 of 12    |

## 0 Introduction

This guide explains the steps to be followed for a correct installation of the resources and software concerning development of applications with the Pixsys operator terminals:

LogicLab is the development environment for the logic part PLC.

Movicon® is the development environment for the graphic interface part.

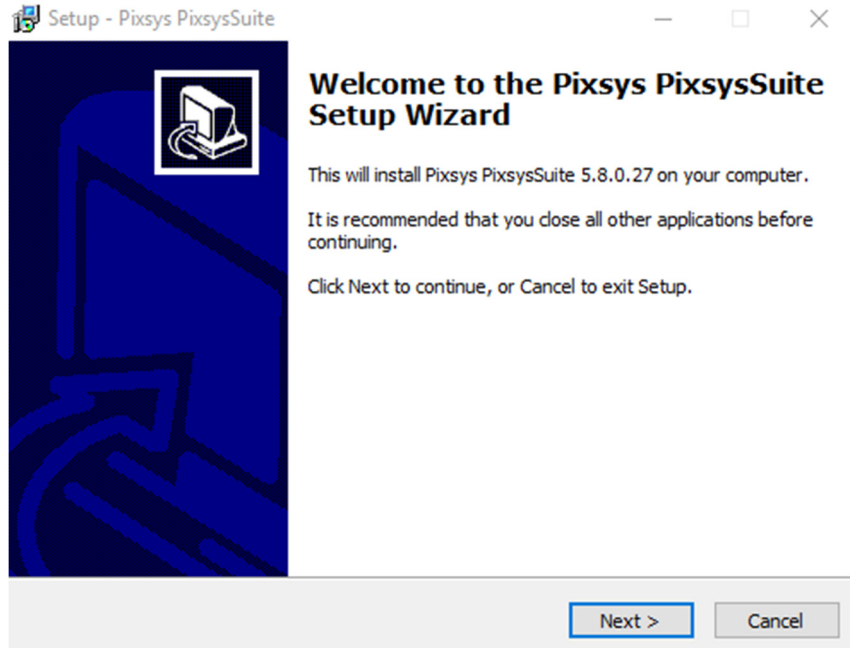
Pixsys SoftPLC Driver is the driver which allows communication between the PLC environment (LogicLab) and the graphic part (Movicon).

|   |                      |          |            |
|---|----------------------|----------|------------|
|  | <h1>USER MANUAL</h1> | Edition: | 1          |
|   |                      | Up-date: | 0          |
|   |                      | Date:    | 28/05/2019 |
|   |                      | Page:    | 5 of 12    |

# 1 LOGICLAB INSTALLATION

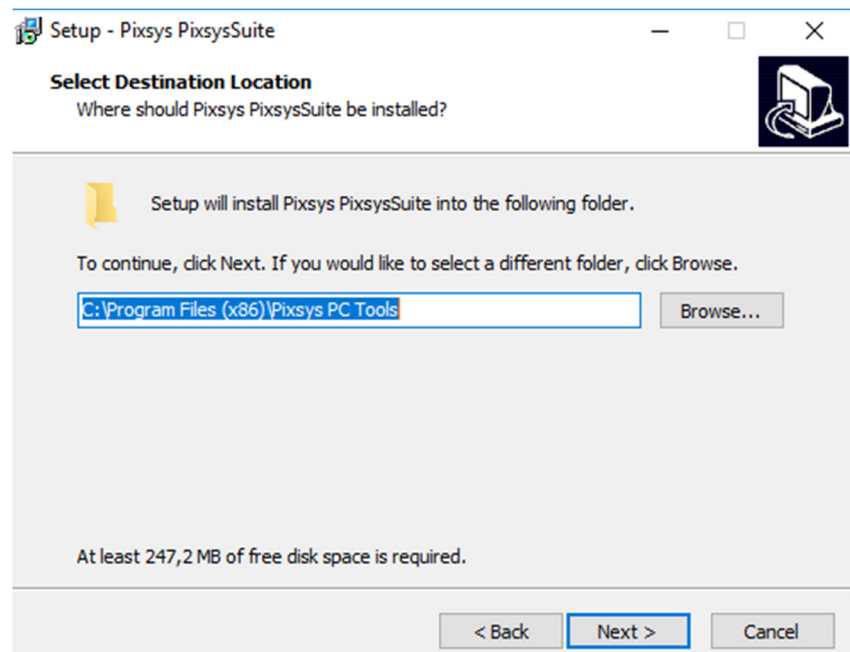
## 1.1 STEP 1

Open the file  
 "Setup\_PixsysSuite.exe"  
 and click "Next"



## 1.2 STEP 2

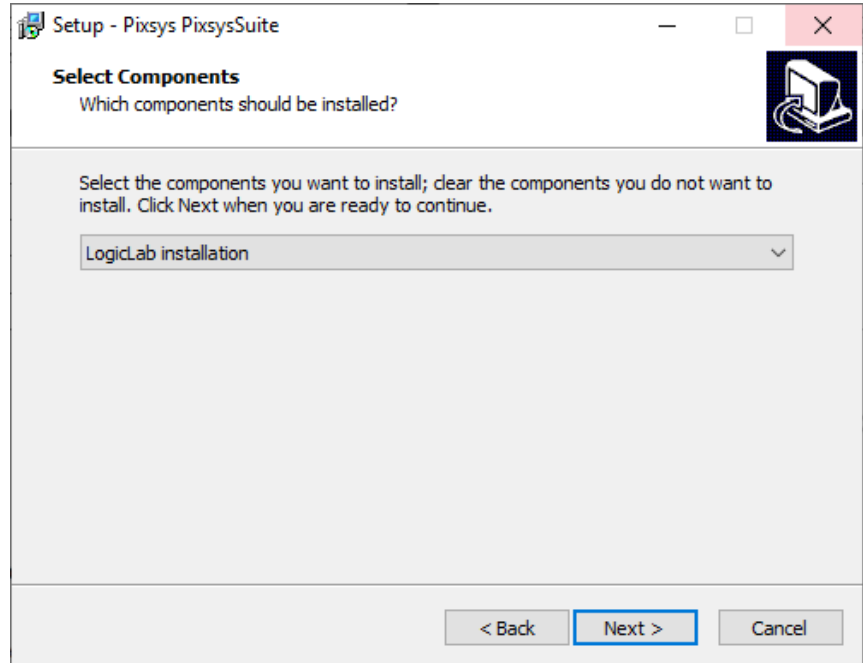
Select destination for  
 the installation of the  
 program and click  
 "Next".



|   |                      |          |            |
|---|----------------------|----------|------------|
|  | <h1>USER MANUAL</h1> | Edition: | 1          |
|   |                      | Up-date: | 0          |
|   |                      | Date:    | 28/05/2019 |
|   |                      | Page:    | 6 of 12    |

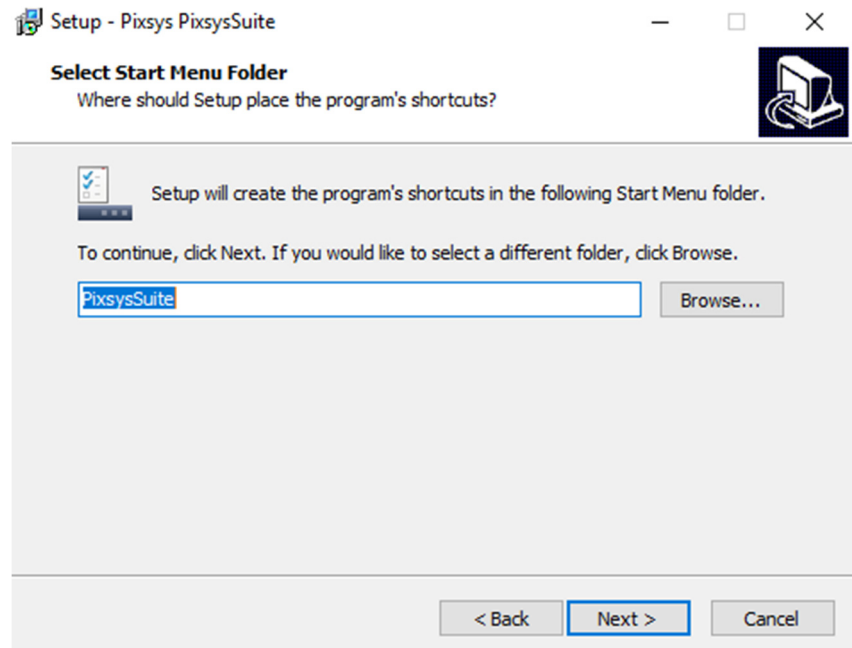
### 1.3 STEP 3

Select the components you wish to install. Leave "LogicLab installation" if you use the new TD410/710/810/820 panels and click "Next".



### 1.4 STEP 4

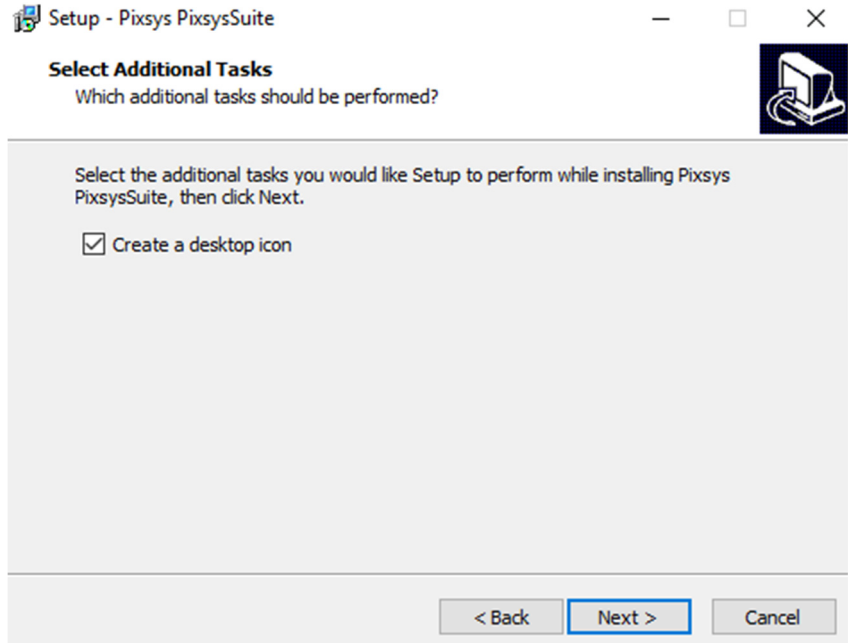
Select the Start Menu folder and click "Next".



|   |                      |          |            |
|---|----------------------|----------|------------|
|  | <h1>USER MANUAL</h1> | Edition: | 1          |
|   |                      | Up-date: | 0          |
|   |                      | Date:    | 28/05/2019 |
|   |                      | Page:    | 7 of 12    |

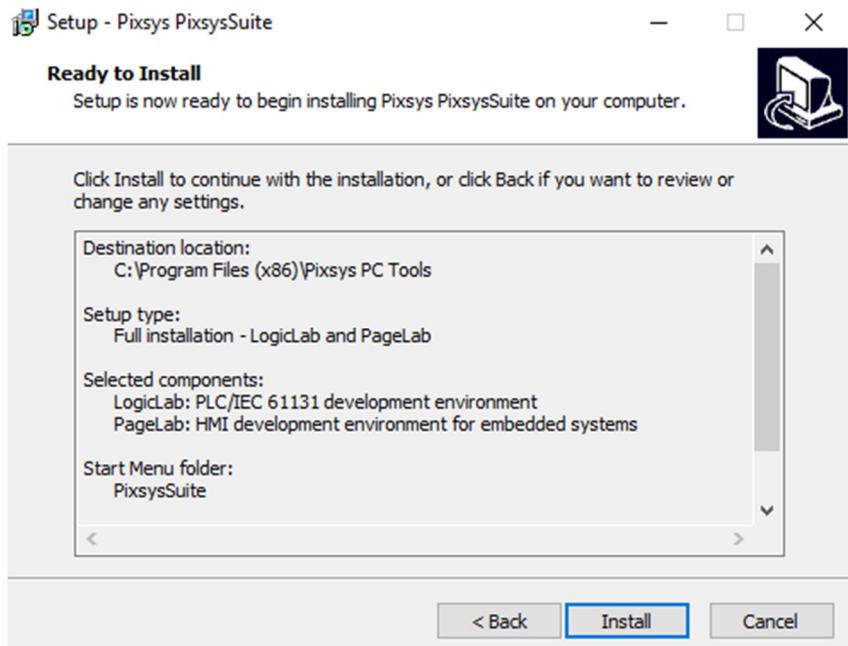
## 1.5 STEP 5

Choose whether to create the icon on the desktop and click "Next".



## 1.6 STEP 6

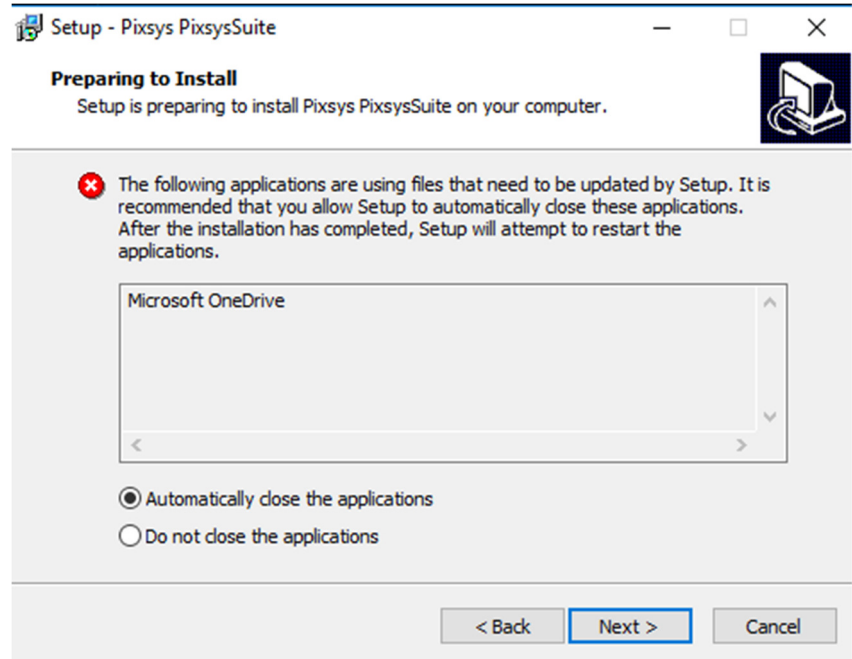
Click "Install" to start LogicLab installation.



|   |                      |          |            |
|---|----------------------|----------|------------|
|  | <h1>USER MANUAL</h1> | Edition: | 1          |
|   |                      | Up-date: | 0          |
|   |                      | Date:    | 28/05/2019 |
|   |                      | Page:    | 8 of 12    |

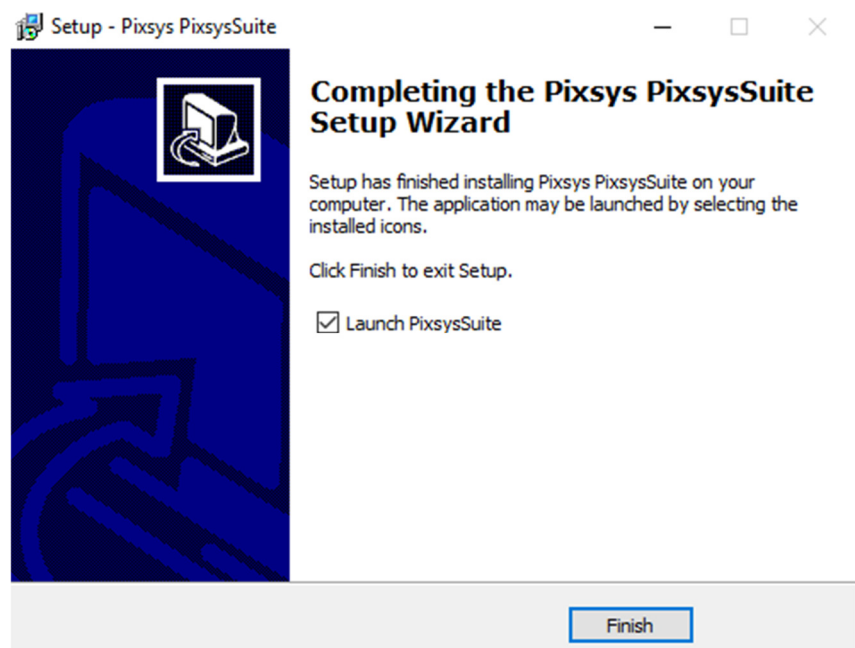
## 1.7 STEP 7

In case there are applications preventing the installation of the program, choose the option "Automatically close the applications" to continue installation.



## 1.8 STEP 8

When the installation is finished, choose if you wish to start the program, enabling the flag "Launch PixsysSuite", and click "Finish".





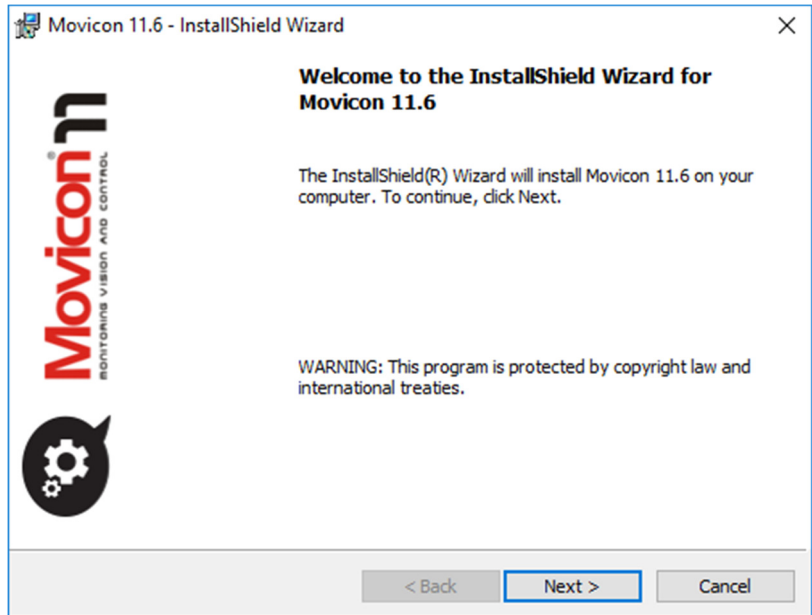
|   |                      |          |            |
|---|----------------------|----------|------------|
|  | <h1>USER MANUAL</h1> | Edition: | 1          |
|   |                      | Up-date: | 0          |
|   |                      | Date:    | 28/05/2019 |
|   |                      | Page:    | 9 of 12    |

## 2 MOVICON® INSTALLATION

### 2.1 STEP 1

Extract the files from the .zip store "SetupMovicon" and open the file "setup.exe" to start Movicon installation.

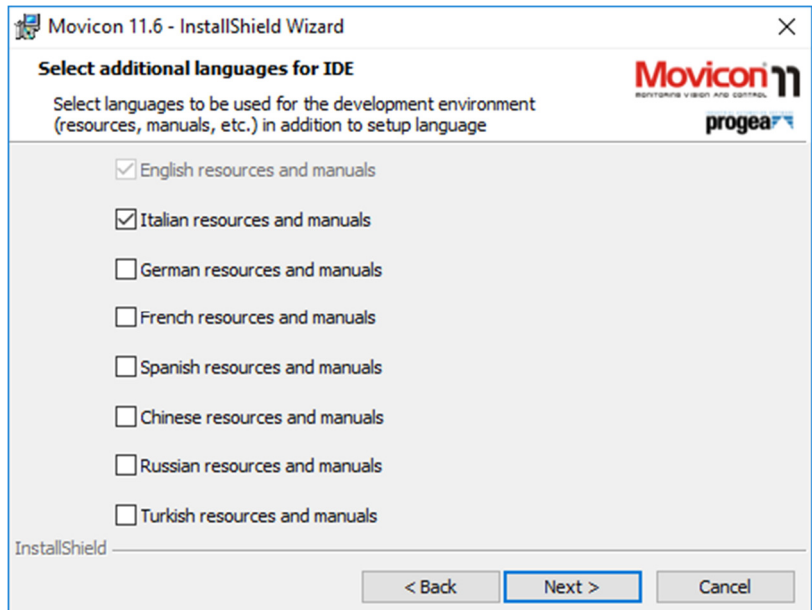
Click "Next".



### 2.2 STEP 2

Choose the additional languages to be available for the development environment (the system language is automatically selected).

Click "Next".

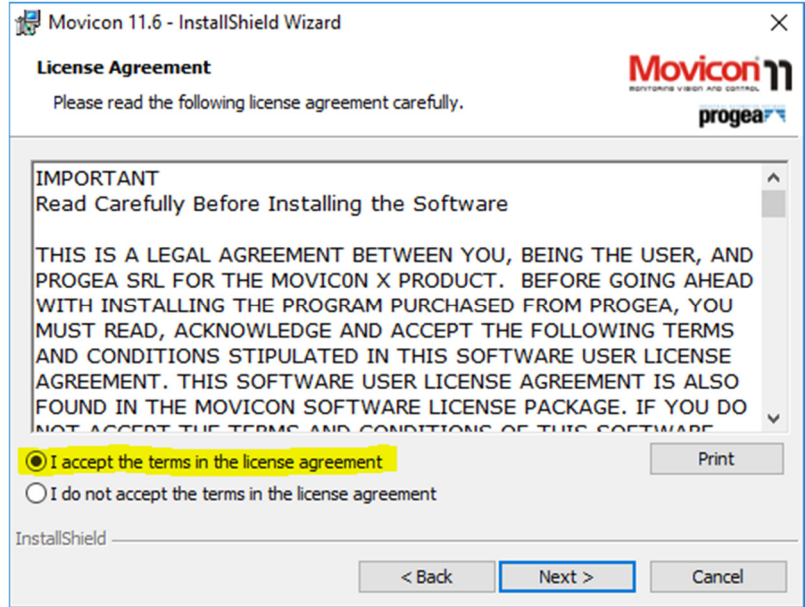


|   |                      |          |            |
|---|----------------------|----------|------------|
|  | <h1>USER MANUAL</h1> | Edition: | 1          |
|   |                      | Up-date: | 0          |
|   |                      | Date:    | 28/05/2019 |
|   |                      | Page:    | 10 of 12   |

## 2.3 STEP 3

Accept the terms of the license agreement.

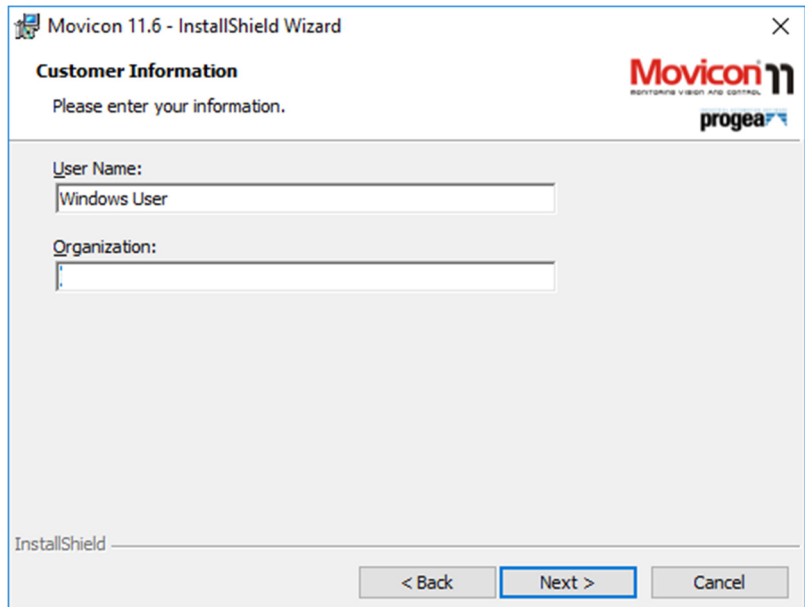
Click "Next".



## 2.4 STEP 4

Enter your user and company name.

Click "Next".

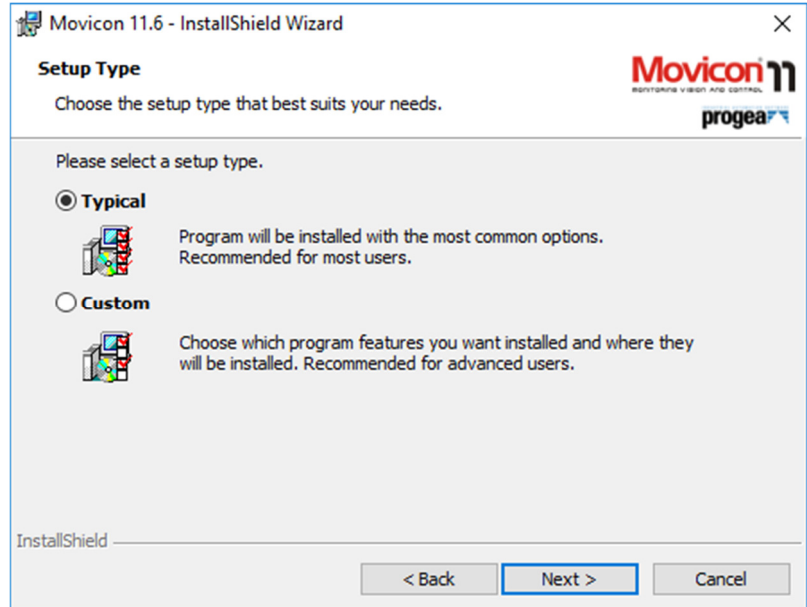


|   |                      |          |            |
|---|----------------------|----------|------------|
|  | <h1>USER MANUAL</h1> | Edition: | 1          |
|   |                      | Up-date: | 0          |
|   |                      | Date:    | 28/05/2019 |
|   |                      | Page:    | 11 of 12   |

## 2.5 STEP 5

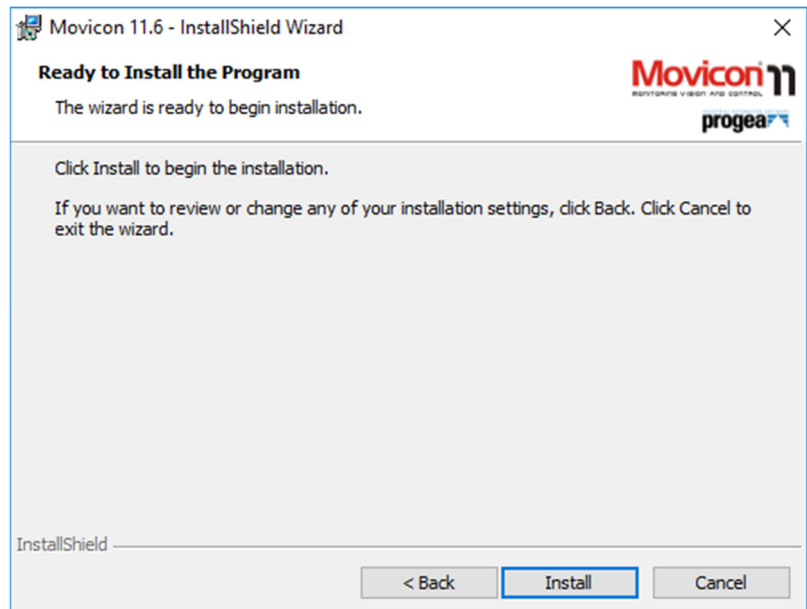
Select “Typical” to install the options most commonly used in the development environment. Select “Custom” to manually choose the resources to be installed.

Click “Next”.



## 2.6 STEP 6

Click “Install” and wait for the end of the installation process.



|   |                      |          |            |
|---|----------------------|----------|------------|
|  | <h1>USER MANUAL</h1> | Edition: | 1          |
|   |                      | Up-date: | 0          |
|   |                      | Date:    | 28/05/2019 |
|   |                      | Page:    | 12 of 12   |

## 3 “Pixsys SoftPLC driver” INSTALLATION

### 3.1 PIXSYS SOFTPLC DRIVER

- 1) Open the application “MOVICON 11.6 Update Driver x86” or “MOVICON 11.6 Update Driver x86”, depending on the operating system version you are using;
- 2) Enter “1” on the keyboard (to choose item 1) and press the enter key;
- 3) Wait for the installation of the drivers; the window will be closed automatically.

```

!!! THIS INSTALLER WORKS WITH MOVICON 11.6 ON 64BIT OPERATING SYSTEM ONLY !!!
DO YOU WANT TO COPY PIXSYS SOFTPLC DRIVER TO THE MOVICON INSTALLATION FOLDER?
CHOOSE 1 OR 2
[1] YES
[2] NO

```

```

!!! THIS INSTALLER WORKS WITH MOVICON 11.6 ON 64BIT OPERATING SYSTEM ONLY !!!
DO YOU WANT TO COPY PIXSYS SOFTPLC DRIVER TO THE MOVICON INSTALLATION FOLDER?
CHOOSE 1 OR 2
[1] YES
[2] NO
1
COPING...
  1 file copied.
  1 file copied.
  1 file copied.
  1 file copied.
COPY COMPLETED! !
CLOSING...

```

Now both software parts are installed and you can start developing the application.