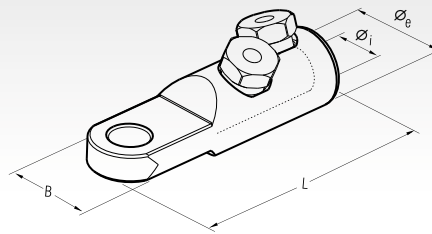


# ML-C

## MECHANICAL LUGS WITH SYMMETRICAL PALM

For Medium voltage Al/Cu conductors



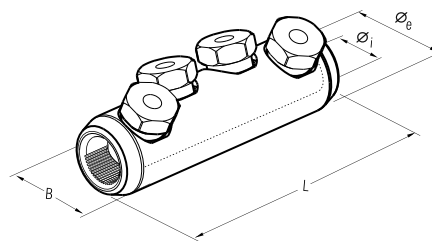
Conductor Size sqmm	Type	Ø Stud mm	Dimensions mm				N° of Bolts	Number of centring devices	Quantity Box/Bag
			Øe	Øi	B	L			
95-240	ML95-240-12C	12	35	20,5	35	124*	2	3 ● ● ●	1/10
95-240	ML95-240-16C	16	35	20,5	35	124*	2	3 ● ● ●	1/10
150-240	ML150-240-12C	12	35	20,5	35	124*	2	2 ● ●	1/10
150-240	ML150-240-16C	16	35	20,5	35	124*	2	2 ● ●	1/10

\* without centring devices

# MBS-C

## MECHANICAL SPLICES

For Low and Medium voltage Al/Cu conductors



Conductor Size sqmm	Type	Dimensions mm				N° of Bolts	Number of centring devices	Quantity Box/Bag
		Øe	Øi	B	L			
50-240	MBS50-240-C	35	20,5	35	124*	4	3 ● ● ●	1/20
95-240	MBS95-240-C	35	20,5	35	124*	4	3 ● ● ●	1/20

\* without centring devices