

RIBBONS

ROLLY2000

Monochrome ribbons

for thermal transfer printer on reel

ROLLY2000 premium quality ribbons provide resin based indelible print in accordance with the scratch and abrasion resistance requirements of CEI 16-7.

TPPS-060 PREMIUM for printing Halogen Free material.



Code	black	blue	red	green	grey	white	Print area mm	Width mm	Length m	Quantity
TPS-060	842112	842113	842115	842114	842116	842122	105	112	200	1
TPPS-06 PREMIUM	842212						105	110	350	1

TR Ribbons provide resin based indelible print in accordance with the scratch and abrasion resistance requirements of CEI 16-7.

Specifically formulated for printing heat shrinkable tubing

Code	black	blue	red	green	grey	white	Print area mm	Width mm	Length m	Quantity
TRR-055	842121						105	60	360	1
TRPR-060 PREMIUM	844121						105	60	360	1

The legibility of print produced on Cembre media by MG2-ETR and MG2-EPTR black ribbons meets the requirements of:

EN ISO 4892-2: UV resistance

CEI 16-7: Resistance to abrasion and friction

CEI 16-7: Effect of ageing

CEI 23-11 / CEI EN 61058-1: Indelibility

CEI EN 61010-1 / VDE 0411-1: Indelibility

Test interno Cembre: Indelibility

EN ISO 9227: Saline mist

CEI EN 60464-2: Resistance to solvent vapour

DIN 30643: Resistance to abrasion and rubbing

UNI EN ISO 175: Effect of immersion in liquid chemicals

Specifications page 154



	printer ROLLY2000 page 46
	printer ROLLY2000TR1 page 47
	printer ROLLY2000TR2 page 48

Cable tags with holders

precut 4mm push in markers, on a roll

TPM-ROLL tags are used for marking cables, conduit, tubes, conductors and components.

Presented in stem format, tags are simply snapped off their stems and inserted into the appropriate holders.

Material: Rigid PVC, self extinguishing class V0: UL94

Operating temperature range: -30°C (-22°F) to +60°C (+140°F)

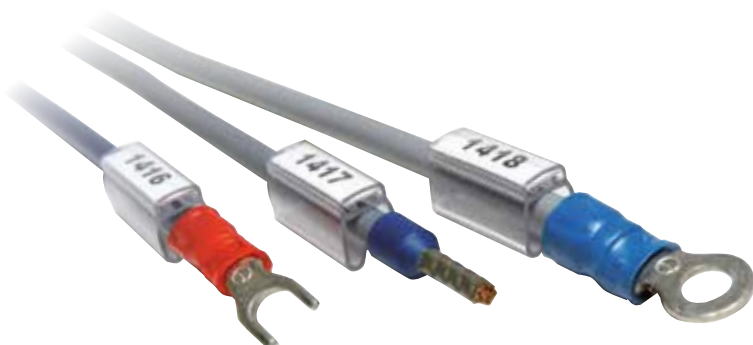
TPM-ROLL



0.4 mm
PVC **-30°C** **+60°C**

UL94 V0 **RoHS COMPLIANT 2011/65/EU**

Size mm		white	yellow	Quantity	SW code
4 x 10	EASY ENTRY	44090B	44040B	16.356	4020
4 x 12	EASY ENTRY	44091B	44041B	12.552	4022
4 x 15	EASY ENTRY	44092B	44042B	12.552	4023
4 x 20		44093	44043	10.200	4005
4 x 30	EASY ENTRY	44096B	44046B	6.270	4026
4 x 40		44097	44047	5.005	4007



printer ROLLY2000.....page 46
 ribbons.....page 50
 tag holders PMF.....page 98
 tag holders PMF-AC.....page 106
 tag holders PMF-ET.....page 107



ETF-ROLL



ROLLY2000

Cable & conduit tags tie-on

precut, one piece markers

ETF-ROLL tags are used with cable ties for marking large diameter cables, hoses, tubes and conduit.

Material: Rigid PVC, self extinguishing class V0: UL94

Operating temperature range: -30°C (-22°F) to +60°C (+140°F)

Material -HF: Polycarbonate PC, Halogen Free, self extinguishing class V0: UL94

Operating temperature range: -40°C (-104°F) to +130°C (+266°F)

Material -PU: Thermoplastic-Polyether-Polyurethane TPU, Halogen Free, Flame Retardent, self extinguishing class V0: UL94

Operating temperature range: -25°C (-13°F) to +80°C (+230°F)

0.4 mm
PVC -30°C +60°C

UL94 V0 RoHS COMPLIANT 2011/65/EU

Size mm		white	yellow	red	blue	Print area mm	Quantity	SW code
13 x 57	ETF-ROLL	44192	44142	44122	44162	11 x 35	1.775	4400

0.4 mm
PC HF -40°C +130°C

UL94 V0 RoHS COMPLIANT 2011/65/EU

Size mm		white	yellow	red	blue	green	orange	Print area mm	Quantity	SW code
13 x 57	ETF-ROLL	44192-HF	44142-HF	44122-HF	44162-HF	44152-HF	44132-HF	11 x 35	1.775	4400

0.6 mm
TPU HF -25°C +80°C

UL94 V0 RoHS COMPLIANT 2011/65/EU

Size mm		white	yellow	Print area mm	Quantity	SW code
10 x 60	ETF-ROLL-PU	44390	44340	8 x 40	1.000	4450



Directly on cables using appropriate cable ties

printer ROLLY2000 page 46
cable ties max width 4,8 mm page 114

Legends

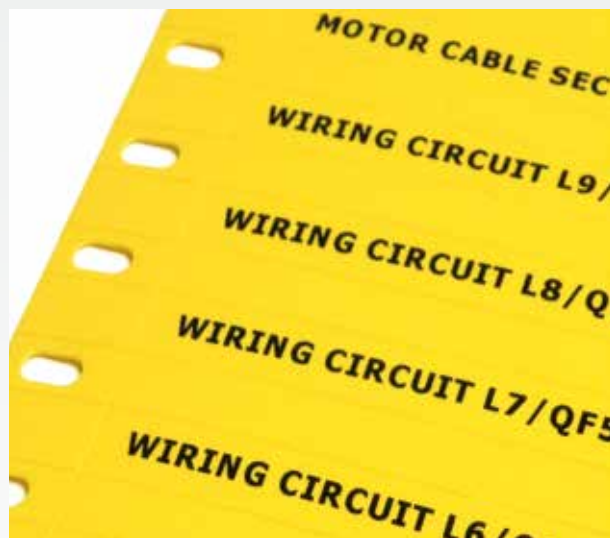
precut

TAR-ROLL tags are used for marking cables, conduit, tubes, conductors and components.

Material: Rigid PVC, self extinguishing class V0: UL94

Operating temperature range: -30°C (-22°F) to +60°C (+140°F)

TAR-ROLL



0.4 mm
PVC **SF** **-30°C** **+60°C**

UL94 V0 **RoHS COMPLIANT 2011/65/EU**

Size mm	white	yellow	Quantity	SW code
9 x 20	75098		5.800	4301
9 x 70	75099	75049	1.450	4300



printer ROLLY2000.....page 46
 tag holders PMT-AC.....page 111
 tag holders PMT-ET.....page 112
 tag holders PMT-DT.....page 113
 tag holders PMT-CT.....page 113
 cable ties.....page 114
 rails RT-TAPW.....page 123



KM-ROLL

ROLLY2000

Wraparound cable markers

self adhesive, precut, Halogen Free

KM-ROLL wraparound cable markers are suitable for identifying large diameter cables, tubes and conduit.

Printing on ROLLY2000, is exceptionally clear and legible and is protected from chemical and atmospheric agents.



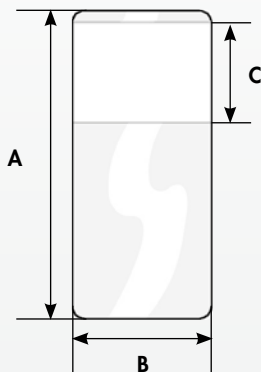
Material: Polyester film (PET)

Operating temperature range: -40°C (-104°F) to +130°C (+266°F).

Application temperature range: +10°C (+50°F) to +40°C (+140°F)



Overall Length A mm	Wrapping diameter mm	Print area CxB mm		white		Columns	Rows	Quantity	SW code
					yellow				
2,6 ÷ 4,1	25	9 x 15	KM-ROLL025	58955-015N	58455-015N	5	1.700	8.500	4600
		9 x 23	KM-ROLL025	58955-023N	58455-023N	4	1.700	6.800	4601
4,3 ÷ 7	38	10 x 15	KM-ROLL038	58950-015N	58450-015N	5	1.200	6.000	4602
		10 x 23	KM-ROLL038	58950-023N	58450-023N	4	1.200	4.800	4603
6 ÷ 10	50	15 x 15	KM-ROLL050	58951-015N	58451-015N	5	900	4.500	4.604
		15 x 23	KM-ROLL050	58951-023N	58451-023N	4	900	3.600	4.605
8 ÷ 14	75	25 x 15	KM-ROLL075	58952-015N	58452-015N	5	600	3.000	4606
		25 x 23	KM-ROLL075	58952-023N	58452-023N	4	600	2.400	4607
12 ÷ 20	100	25 x 15	KM-ROLL100	58953-015N	58453-015N	5	480	2.400	4608
		25 x 23	KM-ROLL100	58953-023N	58453-023N	4	480	1.920	4609
20 ÷ 25	135	25 x 15	KM-ROLL135	58954-015N	58454-015N	5	350	1.750	4610
		25 x 23	KM-ROLL135	58954-023N	58454-023N	4	350	1.400	4611



Directly on cables, etc in accordance with wrapping diameter limitations shown for each size.

printer ROLLY2000.....	page 46
printer ROLLY2000TR1.....	page 47
ribbons.....	page 50

Self adhesive labels

precut

Dielectric labels on a roll, with permanent adhesive backing and increased resistance to ageing.

Material: PVC Coated fabric

Operating temperature range: -40°C to +150°C

Application temperature range: +10°C (+50°F) to +40°C (+140°F)

VCT-ROLL



coated PVC SF -40°C +150°C



Size mm	yellow	Quantity	SW code
9 x 20	48044	8.000	4502
15 x 50	48142	5.000	4503
40 x 7	48043	6.000	4500
100 x 10	48042	2.000	4501



Directly on suitable surfaces.



printer ROLLY2000.....page 46
 printer ROLLY2000TR1.....page 47
 ribbons.....page 50

STRIP-ROLL

ROLLY2000

Modular component legend strips

on reel

Continuous STRIP-ROLL can be used for the identification of modular components.

GENIUSPRO software allows max label length 1.000 mm, with the ability to customise the pitch.



Material: Rigid PVC, self extinguishing class V0: UL94

Operating temperature range: -30°C (-22°F) to +60°C (+140°F)



Height mm	Tracks		white	yellow	Length mm	Length Print area mm	Quantity	SW Code
15	4	STRIP-ROLL-R	13160	13164	25	430	1	5002
						630		5102
						1.000		5202
21	3	STRIP-ROLL-R	13161	13171	25	430	1	5005
						1.000		5205
36	2	STRIP-ROLL-R	13162	13172	25	430	1	5006
						1.000		5206
40	2	STRIP-ROLL-R	13179	13174	25	free	1	4294
80	1	STRIP-ROLL-R	13290	13240	25	free	1	4282

Material: Polyester film

Operating temperature range: -40°C (-104°F) to +130°C (+266°F)

Application temperature range: +10°C (+50°F) to +40°C (+140°F)



Height mm	Tracks	self adhesive	white	Length mm	Length Print area mm	Quantity	SW Code	
15	4	✓	STRIP-ROLL-PY	13189	25	430	1	5002
						630		5102
						1.000		5202



Directly on suitable surfaces.

printer ROLLY2000 page 46
 ribbons page 50
 rails RT-TAP page 122

Thermal transfer labels

self adhesive, on a roll

Thermal transfer labels are made from materials which are not temperature sensitive and whose surfaces are treated to accept the pigment from the ribbon heated by the print head.

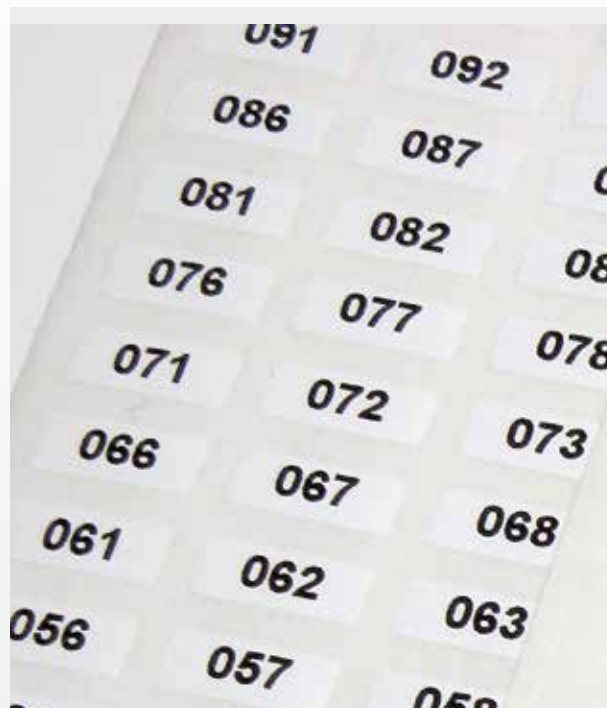
Labels are normally die cut on a roll and arranged horizontally with respect to the printer output, although some are arranged vertically.

When not in use, labels will maintain their good condition if stored in their original packaging and not subject to excessive heat or significant temperature variation. They should be removed from their packaging only at the time of use and not exposed to moisture for long periods.



TT FOR REEL MEDIA

white		yellow	metallic grey		
WVYG	WPYG	YVYG	SVYG	PPYG	Material
PVC film outdoor	Polyester film	PVC film outdoor	PVC film outdoor	Polyester film	
-30°C	-40°C	-30°C	-30°C	-40°C	Min operating temperature
+70°C	+130°C	+70°C	+70°C	+130°C	Max operating temperature
+10°C	+10°C	+10°C	+10°C	+10°C	Min application temperature
+40°C	+40°C	+40°C	+40°C	+40°C	Max application temperature
gloss	gloss	gloss	gloss	gloss	Surface
80µ	50µ	80µ	730µ	50µ	Thickness
★★★★	★	★★★★	★★★★	★★	UV resistance
✓	✓	✓	✓	✓	Permanent adhesive



TTL

ROLLY2000

Rectangular labels, horizontal arrangement

SF



Size mm	Tracks	C mm	D mm	Code	white outdoor	yellow outdoor	metallic grey outdoor	metallic grey	white	Quantity	SW code
5 x 12,7	5	82	158	8400001	WVYG	WPYG	YVYG	SVYG	PPYG	49.500	4125
5 x 20	4	93	158	8400123	WVYG	WPYG	YVYG	SVYG	PPYG	40.000	4126
6 x 15	5	93	135	8400101	WVYG	WPYG	YVYG	SVYG	PPYG	30.000	4100
6,3 x 19	3	72	158	8400005	WVYG	WPYG	YVYG	SVYG	PPYG	25.665	4129
7 x 10	5	70	158	8400093	WVYG	WPYG	YVYG	SVYG	PPYG	40.000	4113
7 x 15	4	77	158	8400008	WVYG	WPYG	YVYG	SVYG	PPYG	32.000	4102
7 x 20	3	75	158	8401010	WVYG	WPYG	YVYG	SVYG	PPYG	24.000	4101
8 x 12	4	65	158	8400091	WVYG	WPYG	YVYG	SVYG	PPYG	29.080	4109
9 x 15	4	76	158	8400092	WVYG	WPYG	YVYG	SVYG	PPYG	26.660	4107
9 x 20	3	72	158	8400017	WVYG	WPYG	YVYG	SVYG	PPYG	19.995	4106
9 x 38	2	88	158	8400094	WVYG	WPYG	YVYG	SVYG	PPYG	13.330	4108
10 x 32	2	73	158	8400081	WVYG	WPYG	YVYG	SVYG	PPYG	12.300	4146
12 x 25	3	89	158	8400023	WVYG	WPYG	YVYG	SVYG	PPYG	16.005	4112
12 x 35	2	80	158	8400088	WVYG	WPYG	YVYG	SVYG	PPYG	10.660	4148
12 x 40	2	89	158	8400024	WVYG	WPYG	YVYG	SVYG	PPYG	10.660	4149
12,7 x 50	2	111	138	8400028	WVYG	WPYG	YVYG	SVYG	PPYG	8.000	4153
15 x 20	4	95	158	8400029	WVYG	WPYG	YVYG	SVYG	PPYG	17.760	4155
15 x 27	3	94	158	8401008	WVYG	WPYG	YVYG	SVYG	PPYG	13.320	4120
15 x 34	2	77	135	8400030	WVYG	WPYG	YVYG	SVYG	PPYG	6.500	4156
15 x 78	1	89	158	8400031	WVYG	WPYG	YVYG	SVYG	PPYG	4.440	4157
18 x 30	3	103	158	8400032	WVYG	WPYG	YVYG	SVYG	PPYG	11.415	4105
18 x 47	2	103	158	8400034	WVYG	WPYG	YVYG	SVYG	PPYG	7.610	4159
21 x 70	1	76	158	8400070	WVYG	WPYG	YVYG	SVYG	PPYG	3.330	4162
22 x 40	2	89	135	8400038	WVYG	WPYG	YVYG	SVYG	PPYG	4.800	4164
22 x 110	1	116	158	8400067	WVYG	WPYG	YVYG	SVYG	PPYG	3.200	4165
25 x 45	2	99	158	8400073	WVYG	WPYG	YVYG	SVYG	PPYG	5.710	4168
25 x 80	1	86	120	8400075	WVYG	WPYG	YVYG	SVYG	PPYG	2.100	4170
25,7 x 50	2	111	135	8400041	WVYG	WPYG	YVYG	SVYG	PPYG	4.200	4172
30 x 50	1	60	158	8400042	WVYG	WPYG	YVYG	SVYG	PPYG	2.420	4175
30 x 80	1	86	158	8400072	WVYG	WPYG	YVYG	SVYG	PPYG	2.420	4176
30 x 100	1	111	158	8400044	WVYG	WPYG	YVYG	SVYG	PPYG	2.420	4177
34 x 60	1	66	165	8400066	WVYG	WPYG	YVYG	SVYG	PPYG	3.200	4182
37 x 74	1	82	158	8400049	WVYG	WPYG	YVYG	SVYG	PPYG	2.000	4186
40 x 60	1	72	158	8400050	WVYG	WPYG	YVYG	SVYG	PPYG	1.860	4110
40 x 80	1	89	165	8400051	WVYG	WPYG	YVYG	SVYG	PPYG	2.800	4188
40 x 90	1	96	158	8400083	WVYG	WPYG	YVYG	SVYG	PPYG	1.860	4121
50 x 80	1	89	165	8400053	WVYG	WPYG	YVYG	SVYG	PPYG	2.200	4192
52 x 105	1	111	163	8400054	WVYG	WPYG	YVYG	SVYG	PPYG	2.100	4194
60 x 80	1	89	158	8400055	WVYG	WPYG	YVYG	SVYG	PPYG	1.265	4195
60 x 100	1	111	220	8400056	WVYG	WPYG	YVYG	SVYG	PPYG	1.850	4197
75 x 105	1	111	158	8400086	WVYG	WPYG	YVYG	SVYG	PPYG	600	4199

Rectangular labels, vertical arrangement



SF



Size mm	Tracks	C mm	D mm	Code	white outdoor	yellow outdoor	metallic grey outdoor	metallic grey	white	Quantity	SW code
63 x 45,5	2	103	165	8400052	WVYG	WPYG	YVYG	SVYG	PPYG	1.500	4250
105 x 90	1	111	158	8400097	WVYG	WPYG	YVYG	SVYG	PPYG	700	4251
120 x 60	1	72	163	8400057	WVYG	WPYG	YVYG	SVYG	PPYG	950	4252
120 x 70	1	76	158	8400079	WVYG	WPYG	YVYG	SVYG	PPYG	650	4253
130 x 64,5	1	72	158	8400058	WVYG	WPYG	YVYG	SVYG	PPYG	600	4254
140 x 98	1	103	165	8400059	WVYG	WPYG	YVYG	SVYG	PPYG	800	4255
180 x 51	2	111	125	8400095	WVYG	WPYG	YVYG	SVYG	PPYG	540	4256
180 x 105	1	111	153	8400061	WVYG	WPYG	YVYG	SVYG	PPYG	500	4257

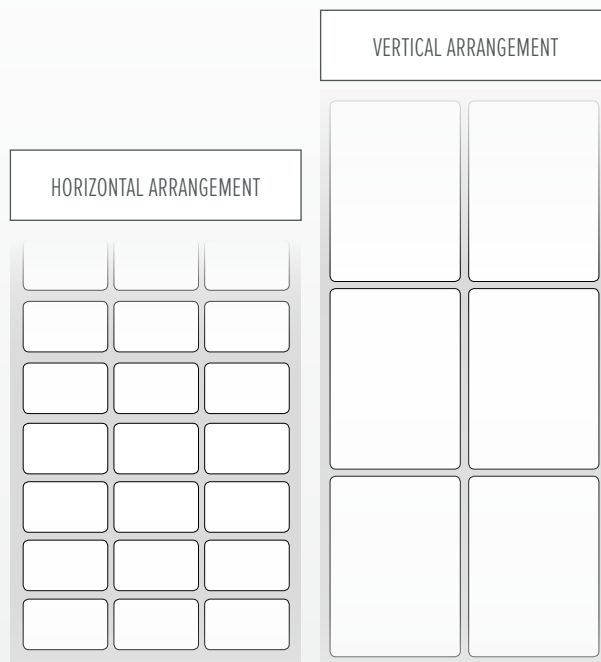
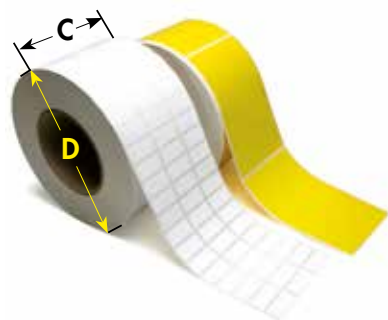
Square labels

SF



Size mm	Tracks	C mm	D mm	Code	white outdoor	yellow outdoor	metallic grey outdoor	metallic grey	white	Quantity	SW code
16 x 16	5	103	158	8402000	WVYG	WPYG	YVYG	SVYG	PPYG	21.050	4200
20 x 20	4	95	158	8403000	WVYG	WPYG	YVYG	SVYG	PPYG	13.900	4201
30 x 30	3	103	158	8403001	WVYG	WPYG	YVYG	SVYG	PPYG	7.260	4202
40 x 40	2	89	158	8402003	WVYG	WPYG	YVYG	SVYG	PPYG	3.720	4203
70 x 70	1	77	158	8403003	WVYG	WPYG	YVYG	SVYG	PPYG	1.600	4204
100 x 100	1	111	158	8403004	WVYG	WPYG	YVYG	SVYG	PPYG	1.100	4205

- Spool diameter \varnothing 76 mm (3 in.)
- Max print area 105 mm



printer ROLLY2000	page 46
printer ROLLY2000TR1	page 47
ribbons	page 50

TTF

ROLLY2000

Continuous material

for thermal transfer printing, on a roll

Continuous material is made from materials which are not temperature sensitive and whose surfaces are treated to accept the pigment from the ribbon heated by the print head.

When not in use, labels will maintain their good condition if stored in their original packaging and not subject to excessive heat or significant temperature variation. They should be removed from their packaging only at the time of use and not exposed to moisture for long periods.



white		yellow			blue	metallic grey		transparent			
WVYG	WPYG/5	WPYG	WVRG	YVYG	YVYG/5	YVRG	BVYG/5	SVYG	PPYG	CPYG	Material
PVC film outdoor	PVC film outdoor	Polyester film	rigid PVC	PVC film outdoor	PVC film outdoor	rigid PVC	PVC film outdoor	PVC film outdoor	Polyester film	PET film	
-30°C	-30°C	-40°C	-40°C	-30°C	-30°C	-40°C	-30°C	-30°C	-40°C	-40°C	Min operating temperature
+70°C	+70°C	+130°C	+60°C	+70°C	+70°C	+60°C	+70°C	+70°C	+130°C	+130°C	Max operating temperature
+10°C	+10°C	+10°C	+10°C	+10°C	+10°C	+10°C	+10°C	+10°C	+10°C	+10°C	Min application temperature
+40°C	+40°C	+40°C	+40°C	+40°C	+40°C	+40°C	+40°C	+40°C	+40°C	+40°C	Max application temperature
gloss	gloss	gloss	gloss	gloss	gloss	gloss	gloss	gloss	gloss	gloss	Surface
80µ	80µ	50µ	50µ	80µ	80µ	50µ	80µ	730µ	50µ	23µ	Thickness
★★★★	★★★★	★	★	★★★★	★★★★	★	★★★★	★★★★	★★	★★★	UV resistance
✓	✓	✓	✓	✓	✓	✓	✓	✓	✓	✓	Permanent adhesive

Continuous material



Width mm	Length m	tipo	white outdoor	yellow outdoor	Quantity	SW code
25	100	8506002	WVRG	YVRG	1	4290



printer ROLLY2000.....	page 46
printer ROLLY2000TR1.....	page 47
cutter.....	page 49
ribbons.....	page 50
Aluminium mounting plates.....	page 61

Self adhesive continuous material



Width mm	Length m	self adhesive	Code	white outdoor	yellow outdoor	metallic grey outdoor	metallic grey	transparent	white	Quantity	SW code
25,4	125	✓	8506012	WVYG	YVYG	SVYG	PPYG	CPYG	WPYG	1	4287
35	125	✓	8506003	WVYG	YVYG	SVYG	PPYG	CPYG	WPYG	1	4280
40	125	✓	8506004	WVYG	YVYG	SVYG	PPYG	CPYG	WPYG	1	4281
50	125	✓	8506011	WVYG	YVYG	SVYG	PPYG	CPYG	WPYG	1	4283
58	125	✓	8506010	WVYG	YVYG	SVYG	PPYG	CPYG	WPYG	1	4285
80	125	✓	8506001	WVYG	YVYG	SVYG	PPYG	CPYG	WPYG	1	4282
105	125	✓	8506000	WVYG	YVYG	SVYG	PPYG	CPYG	WPYG	1	4284

Self adhesive continuous material, reflective finish



Width mm	Length m	self adhesive	Code	white outdoor	yellow outdoor	blue outdoor	Quantity	SW code
35	24	✓	8506007	WVYG/5	YVYG/5		1	4287
80	24	✓	8506008	WVYG/5	YVYG/5		1	4280
105	24	✓	8506006	WVYG/5	YVYG/5		1	4281
115	24	✓	8506009			BVYG/5	1	4283

Aluminium mounting plates

round corners, thickness 0,5 mm

Cembre TTL and TTF labels stuck to Aluminium mounting plates are easily fixed to poles, columns, pylons and structures via the slot or holes provided.



When used externally the application of an additional transparent film CPYG, will improve resistance to environmental agents.



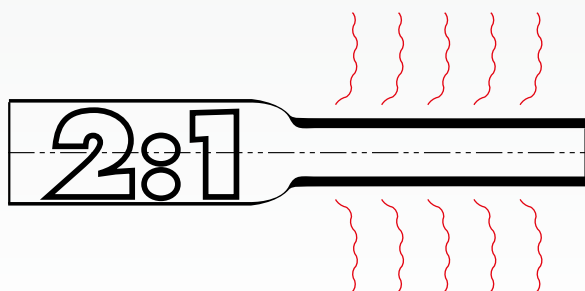
Code	Size mm	white	Fixing	Use with
GMC-2751S	225 x 120	x	slots	TTL8400061, GMC-2700S+TTL8400097
GMC-2907S	430 x 120	x	slots	
GMC-2678S	115 x 200	x	2 holes+ slots	TTL8400061
GMC-2732S	70 x 140	x	2 holes	TTL8400057
GMC-3101S	200 x 80	x	2 holes	



	i
cutters.....	page 49
ribbons.....	page 50
Aluminium mounting plates.....	page 61

TT FOR REEL MEDIA

TERMO-ROLL H2



ROLLY2000

Heat shrinkable tubing High Grade 2:1

ladder & continuous, shrinkage ratio 2:1

H2 type heat shrinkable tubing is used to provide highly legible and resistant identification of cables, pipes, conduits, etc within a minimum space.

Halogen Free composition provides flame retardancy and low smoke emission characteristics suitable for safety critical applications including closed environments such as tunnels and subways, rail installations, marine and industrial applications.

Material: Irradiated Polyolefin, shrinkage ratio 2:1

Operating temperature range: -30°C (-22°F) to +105°C (+221°F)

Minimum shrinkage temperature: > +90°C (+221°F)

Technical

Resistance to liquids, after the shrinkage

MIL-STD-202G test method 215 2002 (MIL-81531/SAE-AS81531-1998 clause 3.4.3)

EN 50343:2003 Railway applications, signalling and subways - Rolling stock - Rules for installation of cabling

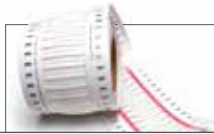
Meets the requirements for fire testing of materials and components for trains in EN 45545-2:2013 N°010.1IS0040/15



Internal Ø before shrinking mm	Cable ext. Ø range mm	Cable c.s.a range mm ²	white	yellow	Length mm	Tubes per step	Quantity	SW Code
2,4	1,6 ÷ 2	0,25 ÷ 0,5	H2-24-12.5-WH1		12,5	4	4.000	4800
			H2-24-25-WH1	H2-24-25-YE1	25	2	2.000	4802
			H2-24-50-WH1		50	1	1.000	4804
3,2	1,8 ÷ 2,8	0,5 ÷ 1	H2-32-12.5-WH1	H2-32-12.5-YE1	12,5	4	4.000	4810
			H2-32-25-WH1	H2-32-25-YE1	25	2	2.000	4812
			H2-32-50-WH1	H2-32-50-YE1	50	1	1.000	4814
4,8	2,8 ÷ 4,2	1 ÷ 2,5	H2-48-12.5-WH1	H2-48-12.5-YE1	12,5	4	4.000	4820
			H2-48-25-WH1	H2-48-25-YE1	25	2	2.000	4822
			H2-48-50-WH1	H2-48-50-YE1	50	1	1.000	4824
6,4	4,2 ÷ 5,8	4 ÷ 6	H2-64-12.5-WH1	H2-64-12.5-YE1	12,5	4	4.000	4830
			H2-64-25-WH1	H2-64-25-YE1	25	2	2.000	4832
			H2-64-50-WH1	H2-64-50-YE1	50	1	1.000	4834
9,5	5,8 ÷ 8	10 ÷ 16	H2-95-12.5-WH1	H2-95-12.5-YE1	12,5	4	2.000	4840
			H2-95-25-WH1	H2-95-25-YE1	25	2	1.000	4842
			H2-95-50-WH1	H2-95-50-YE1	50	1	500	4844
12,7	8 ÷ 11	25 ÷ 35	H2-127-50-WH1	H2-127-50-YE1	50	1	500	4854
19,1	11 ÷ 17	35 ÷ 50	H2-190-50-WH1	H2-190-50-YE1	50	1	500	4864
25,4	17 ÷ 23	50 ÷ 120	H2-254-50-WH1	H2-254-50-YE1	50	1	300	4874
38,1	23 ÷ 36	120 ÷ 240	H2-381-50-WH1	H2-381-50-YE1	50	1	100	4884
50,8	23 ÷ 48	240 ÷ 400	H2-508-50-WH1		50	1	100	4894



LADDER, ONE SIDE ONLY



TERMO-ROLL H2



LADDER, ON BOTH SIDES



Internal Ø before shrinking mm	Cable ext. Ø range mm	Cable c.s.a range mm ²	white	yellow	Length mm	Tubes per step	Quantity	SW Code
2,4	1,6 ÷ 2	0,25 ÷ 0,5	H2-24-25-WH2	H2-24-25-YE2	25	2	2.000	4802
			H2-24-50-WH2	H2-24-50-YE2	50	1	1.000	4804
3,2	1,8 ÷ 2,8	0,5 ÷ 1	H2-32-25-WH2	H2-32-25-YE2	25	2	2.000	4812
			H2-32-50-WH2	H2-32-50-YE2	50	1	1.000	4814
			H2-32-50-WH2BULK		50	1	5.000	4814
4,8	2,8 ÷ 4,2	1 ÷ 2,5	H2-48-25-WH2	H2-48-25-YE2	25	2	2.000	4822
			H2-48-50-WH2	H2-48-50-YE2	50	1	1.000	4824
			H2-48-50-WH2BULK		50	1	5.000	4824
6,4	4,2 ÷ 5,8	4 ÷ 6	H2-64-25-WH2	H2-64-25-YE2	25	2	2.000	4832
			H2-64-50-WH2	H2-64-50-YE2	50	1	1.000	4834
			H2-64-50-WH2BULK		50	1	3.000	4834
9,5	5,8 ÷ 8	10 ÷ 16	H2-95-25-WH2	H2-95-25-YE2	25	2	1.000	4842
			H2-95-50-WH2	H2-95-50-YE2	50	1	500	4844
			H2-95-50-WH2BULK		50	1	2.000	4844
12,7	8 ÷ 11	25 ÷ 35	H2-127-25-WH2	H2-127-25-YE2	25	2	1.000	4852
			H2-127-50-WH2	H2-127-50-YE2	50	1	500	4854
19,1	11 ÷ 17	35 ÷ 50	H2-190-25-WH2	H2-190-25-YE2	25	2	1.000	4862
			H2-190-50-WH2	H2-190-50-YE2	50	1	500	4864
25,4	17 ÷ 23	50 ÷ 120	H2-254-25-WH2	H2-254-25-YE2	25	2	600	4872
			H2-254-50-WH2	H2-254-50-YE2	50	1	300	4874
38,1	23 ÷ 36	120 ÷ 240	H2-381-25-WH2	H2-381-25-YE2	25	2	200	4882
			H2-381-50-WH2	H2-381-50-YE2	50	1	100	4884
50,8	23 ÷ 48	240 ÷ 400	H2-508-50-WH2	H2-508-50-YE2	50	1	100	4894



CONTINUOUS, ON BOTH SIDES



Internal Ø before shrinking mm	Cable ext. Ø range mm	Cable c.s.a range mm ²	white	yellow	Length mm	Tubes per step	Quantity	SW Code
2,4	1,6 ÷ 2	0,25 ÷ 0,5	H2-24-WH3	H2-24-YE3	20		1	7000
			H2-24-WH3-50	H2-24-YE3-50	50		1	7000
3,2	1,8 ÷ 2,8	0,5 ÷ 1	H2-32-WH3	H2-32-YE3	20		1	7010
			H2-32-WH3-100	H2-32-YE3-100	100		1	7010
4,8	2,8 ÷ 4,2	1 ÷ 2,5	H2-48-WH3	H2-48-YE3	20		1	7020
			H2-48-WH3-100	H2-48-YE3-100	100		1	7020
6,4	4,2 ÷ 5,8	4 ÷ 6	H2-64-WH3	H2-64-YE3	20		1	7030
			H2-64-WH3-100	H2-64-YE3-100	100		1	7030
9,5	5,8 ÷ 8	10 ÷ 16	H2-95-WH3	H2-95-YE3	15		1	7040
			H2-95-WH3-100	H2-95-YE3-100	100		1	7040
12,7	8 ÷ 11	25 ÷ 35	H2-127-WH3	H2-127-YE3	15		1	7050
			H2-127-WH3-100	H2-127-YE3-100	100		1	7050
19	11 ÷ 17	35 ÷ 50	H2-190-WH3	H2-190-YE3	15		1	7060
			H2-190-WH3-100	H2-190-YE3-100	100		1	7060
25,4	17 ÷ 23	50 ÷ 120	H2-254-WH3	H2-254-YE3	15		1	7070
			H2-254-WH3-100	H2-254-YE3-100	100		1	7070
38,1	23 ÷ 36	120 ÷ 240	H2-381-WH3	H2-381-YE3	15		1	7080
			H2-381-WH3-60	H2-381-YE3-60	60		1	7080
50,8	27 ÷ 48	240 ÷ 400	H2-508-WH3	H2-508-YE3	15		1	7090
			H2-508-WH3-60	H2-508-YE3-60	60		1	7090

TERMO-ROLL H3

ROLLY2000

Heat shrinkable tubing High Grade 3:1

ladder & continuous, shrinkage ratio 3:1

H3 type heat shrinkable tubing is used to provide highly legible and resistant identification of cables, pipes, conduits, etc within a minimum space.

High flexibility, fire resistance and a 3:1 shrinkage ratio to cover a wide range of cable diameters enable suitability for many industrial and technological applications.

Material: Irradiated Polyolefin, shrinkage ratio 3:1

Operating temperature range: -55°C (-131°F) to +135°C (+275°F)

Minimum shrinkage temperature: > +90°C (+194°F)

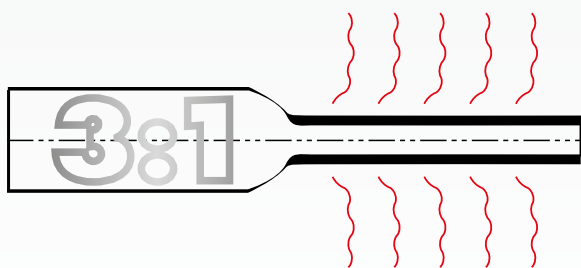
Technical

CSA recognised

Flammability

Flame retardant according to SAE-AMS-DTL-23053/5 classe 1&3,

UL 224 125°C 600V VW-1



Internal Ø before shrinking mm	Cable ext. Ø range mm	Cable c.s.a range mm²	white	yellow	Length mm	Tubes per step	Quantity	SW Code
4,8	1,8 ÷ 4,2	0,5 ÷ 2,5	H3-48-12.5-WH1	H3-48-12.5-YE1	12,5	4	4.000	4920
			H3-48-25-WH1	H3-48-25-YE1	25	2	2.000	4922
			H3-48-50-WH1	H3-48-50-YE1	50	1	1.000	4924
6	2,5 ÷ 5,5	1 ÷ 6	H3-60-12.5-WH1	H3-60-12.5-YE1	12,5	4	4.000	4930
			H3-60-25-WH1	H3-60-25-YE1	25	2	2.000	4932
			H3-60-50-WH1	H3-60-50-YE1	50	1	1.000	4934
9	4 ÷ 8	4 ÷ 16	H3-90-12.5-WH1	H3-90-12.5-YE1	12,5	4	2.000	4940
			H3-90-25-WH1	H3-90-25-YE1	25	2	1.000	4942
			H3-90-50-WH1	H3-90-50-YE1	50	1	500	4944
12	5 ÷ 11	6 ÷ 35	H3-120-12.5-WH1	H3-120-12.5-YE1	12,5	4	2.000	4950
			H3-120-25-WH1	H3-120-25-YE1	25	2	1.000	4952
			H3-120-50-WH1	H3-120-50-YE1	50	1	500	4954
18	6,5 ÷ 17	16 ÷ 50	H3-180-12.5-WH1	H3-180-12.5-YE1	12,5	4	2.000	4960
			H3-180-25-WH1	H3-180-25-YE1	25	2	1.000	4962
			H3-180-50-WH1	H3-180-50-YE1	50	1	500	4964
24	9 ÷ 23	25 ÷ 120	H3-240-50-WH1	H3-240-50-YE1	50	1	300	4974



LADDER, ONE SIDE ONLY



TERMO-ROLL H3



LADDER, ON BOTH SIDES



Internal Ø before shrinking mm	Cable ext. Ø range mm	Cable c.s.a range mm²	white	yellow	Length mm	Tubes per step	Quantity	SW Code
3	1,2 ÷ 2,8	0,25 ÷ 1	H3-30-25-WH2	H3-30-25-YE2	25	2	2.000	4912
			H3-30-50-WH2	H3-30-50-YE2	50	1	1.000	4914
4,8	1,8 ÷ 4,2	0,5 ÷ 2,5	H3-48-25-WH2	H3-48-25-YE2	25	2	2.000	4922
			H3-48-50-WH2	H3-48-50-YE2	50	1	1.000	4924
6	2,5 ÷ 5,5	1 ÷ 6	H3-60-25-WH2	H3-60-25-YE2	25	2	2.000	4932
			H3-60-50-WH2	H3-60-50-YE2	50	1	1.000	4934
9	4 ÷ 8	4 ÷ 16	H3-90-25-WH2	H3-90-25-YE2	25	2	1.000	4942
			H3-90-50-WH2	H3-90-50-YE2	50	1	500	4944
12	5 ÷ 11	6 ÷ 35	H3-120-25-WH2	H3-120-25-YE2	25	2	1.000	4952
			H3-120-50-WH2	H3-120-50-YE2	50	1	500	4954
18	6,5 ÷ 17	16 ÷ 50	H3-180-25-WH2	H3-180-25-YE2	25	2	1.000	4962
			H3-180-50-WH2	H3-180-50-YE2	50	1	500	4964
24	9 ÷ 23	25 ÷ 120	H3-240-25-WH2	H3-240-25-YE2	25	1	600	4972
			H3-240-50-WH2	H3-240-50-YE2	50	1	300	4974
39	15 ÷ 37	25 ÷ 120	H3-390-50-WH2	H3-390-50-YE2	50	1	100	4984



CONTINUOUS, ON BOTH SIDES



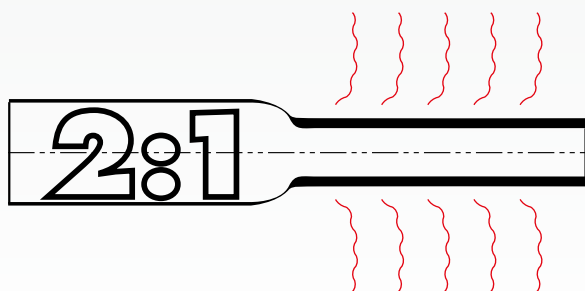
Internal Ø before shrinking mm	Cable ext. Ø range mm	Cable c.s.a range mm²	white	yellow	Length mm	Tubes per step	Quantity	SW Code
4,8	1,8 ÷ 4,2	0,5 ÷ 2,5	H3-48-WH3	H3-48-YE3	20		1	7120
6	2,5 ÷ 5,5	1 ÷ 6	H3-60-WH3	H3-60-YE3	20		1	7130
9	4 ÷ 8	4 ÷ 16	H3-90-WH3	H3-90-YE3	15		1	7140
12	5 ÷ 11	6 ÷ 35	H3-120-WH3	H3-120-YE3	15		1	7150
18	6,5 ÷ 17	16 ÷ 50	H3-180-WH3	H3-180-YE3	15		1	7160
24	9 ÷ 23	25 ÷ 120	H3-240-WH3	H3-240-YE3	15		1	7170

Insert the cable into the tube, shrink by applying a hot air flow.



heat gun EH6 2000 page 49
 support frame page 49
 ribbons page 50

TERMO-ROLL M2



ROLLY2000

Heat shrinkable tubing Medium Grade 2:1

ladder & continuous, shrinkage ratio 2:1

M2 type heat shrinkable tubing is used to provide highly legible and resistant identification of cables, pipes, conduits, etc within a minimum space.

Halogen Free composition provides flame retardancy and low smoke emission characteristics suitable for many types of application requiring more restrictive safety standards to be met.

Material: Irradiated Polyolefin, shrinkage ratio 2:1

Operating temperature range: -40°C (-104°F) to +125°C (+257°F)

Minimum shrinkage temperature: > +70°C (+158°F)

Technical

Adherence MIL-81531 AS, SAE-AS81531-199, point 4.6.2

Flammability Flame retardant according to UL 224

Meets the requirements for fire testing of materials and components for trains in EN 45545-2:2013 N°010.1IS0040/15



Internal Ø before shrinking mm	Cable ext. Ø range mm	Cable c.s.a range mm²	white	yellow	Length mm	Tubes per step	Quantity	SW Code
3,2	1,8 ÷ 2,8	0,5 ÷ 1	M2-32-12.5-WH1	M2-32-12.5-YE1	12,5	4	4.000	4810
			M2-32-25-WH1	M2-32-25-YE1	25	2	2.000	4812
			M2-32-50-WH1	M2-32-50-YE1	50	1	1.000	4814
4,8	2,8 ÷ 4,2	1 ÷ 2,5	M2-48-12.5-WH1	M2-48-12.5-YE1	12,5	4	4.000	4820
			M2-48-25-WH1	M2-48-25-YE1	25	2	2.000	4822
			M2-48-50-WH1	M2-48-50-YE1	50	1	1.000	4824
6,4	4,2 ÷ 5,8	4 ÷ 6	M2-64-12.5-WH1	M2-64-12.5-YE1	12,5	4	4.000	4830
			M2-64-25-WH1	M2-64-25-YE1	25	2	2.000	4832
			M2-64-50-WH1	M2-64-50-YE1	50	1	1.000	4834
9,5	5,8 ÷ 8	10 ÷ 16	M2-95-12.5-WH1	M2-95-12.5-YE1	12,5	4	2.000	4840
			M2-95-25-WH1	M2-95-25-YE1	25	2	1.000	4842
			M2-95-50-WH1	M2-95-50-YE1	50	1	500	4844
12,7	8 ÷ 11	25 ÷ 35	M2-127-25-WH1	M2-127-25-YE1	25	2	1.000	4852
			M2-127-50-WH1	M2-127-50-YE1	50	1	500	4854
19,1	11 ÷ 17	35 ÷ 50	M2-190-25-WH1	M2-190-25-YE1	25	1	1.000	4862
			M2-190-50-WH1	M2-190-50-YE1	50	1	500	4864
25,4	17 ÷ 23	50 ÷ 120	M2-254-25-WH1	M2-254-25-YE1	25	2	600	4872
			M2-254-50-WH1	M2-254-50-YE1	50	1	300	4874





LADDER, ON BOTH SIDES

TERMO-ROLL M2



Internal Ø before shrinking mm	Cable ext. Ø range mm	Cable c.s.a range mm²	white	yellow	Length mm	Tubes per step	Quantity	SW Code
2,4	1,6 ÷ 2	0,25 ÷ 0,5	M2-24-25-WH2	M2-24-25-YE2	25	2	2.000	4802
			M2-24-50-WH2	M2-24-50-YE2	50	1	1.000	4804
3,2	1,8 ÷ 2,8	0,5 ÷ 1	M2-32-25-WH2	M2-32-25-YE2	25	2	2.000	4812
			M2-32-50-WH2	M2-32-50-YE2	50	1	1.000	4814
4,8	2,8 ÷ 4,2	1 ÷ 2,5	M2-48-25-WH2	M2-48-25-YE2	25	2	2.000	4822
			M2-48-50-WH2	M2-48-50-YE2	50	1	1.000	4824
6,4	4,2 ÷ 5,8	4 ÷ 6	M2-64-25-WH2	M2-64-25-YE2	25	2	2.000	4832
			M2-64-50-WH2	M2-64-50-YE2	50	1	1.000	4834
9,5	5,8 ÷ 8	10 ÷ 16	M2-95-25-WH2	M2-95-25-YE2	25	2	1.000	4842
			M2-95-50-WH2	M2-95-50-YE2	50	1	500	4844
12,7	8 ÷ 11	25 ÷ 35	M2-127-25-WH2	M2-127-25-YE2	25	2	1.000	4852
			M2-127-50-WH2	M2-127-50-YE2	50	1	500	4854
19,1	11 ÷ 17	35 ÷ 50	M2-190-25-WH2	M2-190-25-YE2	25	2	1.000	4862
			M2-190-50-WH2	M2-190-50-YE2	50	1	500	4864
25,4	17 ÷ 23	50 ÷ 120	M2-254-25-WH2	M2-254-25-YE2	25	2	600	4872
			M2-254-50-WH2	M2-254-50-YE2	50	1	300	4874
38,1	23 ÷ 36	120 ÷ 240	M2-381-25-WH2	M2-381-25-YE2	25	2	200	4882
			M2-381-50-WH2	M2-381-50-YE2	50	1	100	4884

TT FOR REEL MEDIA

Internal Ø before shrinking mm	Cable ext. Ø range mm	Cable c.s.a range mm²	white	yellow	Length mm	Tubes per step	Quantity	SW Code
2,4	1,6 ÷ 2	0,25 ÷ 0,5	M2-24-WH3	M2-24-YE3	20		1	7000
			M2-24-WH3-50	M2-24-YE3-50	50		1	7000
3,2	1,8 ÷ 2,8	0,5 ÷ 1	M2-32-WH3	M2-32-YE3	20		1	7010
			M2-32-WH3-100	M2-32-YE3-100	100		1	7010
4,8	2,8 ÷ 4,2	1 ÷ 2,5	M2-48-WH3	M2-48-YE3	20		1	7020
			M2-48-WH3-100	M2-48-YE3-100	100		1	7020
6,4	4,2 ÷ 5,8	4 ÷ 6	M2-64-WH3	M2-64-YE3	20		1	7030
			M2-64-WH3-100	M2-64-YE3-100	100		1	7030
9,5	5,8 ÷ 8	10 ÷ 16	M2-95-WH3	M2-95-YE3	15		1	7040
			M2-95-WH3-100	M2-95-YE3-100	100		1	7040
12,7	8 ÷ 11	25 ÷ 35	M2-127-WH3	M2-127-YE3	15		1	7050
			M2-127-WH3-100	M2-127-YE3-100	100		1	7050
19,1	11 ÷ 17	35 ÷ 50	M2-190-WH3	M2-190-YE3	15		1	7060
			M2-190-WH3-100	M2-190-YE3-100	100		1	7060
25,4	17 ÷ 23	50 ÷ 120	M2-254-WH3	M2-254-YE3	15		1	7070
			M2-254-WH3-100	M2-254-YE3-100	100		1	7070
38,1	23 ÷ 36	120 ÷ 240	M2-381-WH3	M2-381-YE3	15		1	7080
			M2-381-WH3-60	M2-381-YE3-60	60		1	7080
50,8	27 ÷ 49	240 ÷ 400	M2-508-WH3	M2-508-YE3	15		1	7090
			M2-508-WH3-60	M2-508-YE3-60	60		1	7090

Insert the cable into the tube, shrink by applying a hot air flow.



heat gun EHG 2000 page 49
 support frame page 49
 ribbons page 50

CONTINUOUS, ON BOTH SIDES



TERMO-ROLL M3

ROLLY2000

Heat shrinkable tubing Medium Grade 3:1

ladder & continuous, shrinkage ratio 3:1

M3 type heat shrinkable tubing is used to provide highly legible and resistant identification of cables, pipes, conduits, etc within a minimum space.

High fire resistance and a 3:1 shrinkage ratio to cover a wide range of cable diameters enable suitability for many industrial applications.

Material: Irradiated Polyolefin, shrinkage ratio 3:1

Operating temperature range: -55°C (-131°F) to +135°C (+275°F)

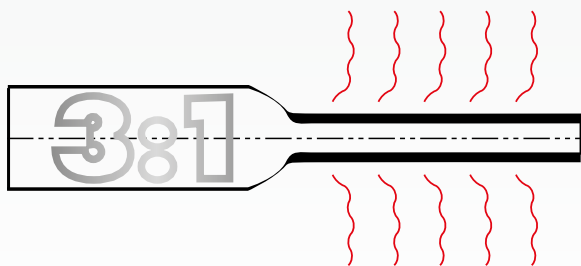
Minimum shrinkage temperature: > +90°C (+194°F)

Technical

Flammability, flame-retardant according to

SAE-AMS-DTL-23053/5 class 1

UL 224 125°C 600V VW-1



Internal Ø before shrinking mm	Cable ext. Ø range mm	Cable c.s.a range mm ²	white	yellow	Length mm	Tubes per step	Quantity	SW Code
4,8	1,8 ÷ 4,2	0,5 ÷ 2,5	M3-48-12.5-WH1	M3-48-12.5-YE1	12,5	4	4.000	4820
			M3-48-25-WH1	M3-48-25-YE1	25	2	2.000	4822
			M3-48-50-WH1	M3-48-50-YE1	50	1	1.000	4824
6,4	2,5 ÷ 5,8	1 ÷ 6	M3-64-12.5-WH1	M3-64-12.5-YE1	12,5	4	4.000	4830
			M3-64-25-WH1	M3-64-25-YE1	25	2	2.000	4832
			M3-64-50-WH1	M3-64-50-YE1	50	1	1.000	4834
9,5	3,8 ÷ 8	4 ÷ 16	M3-95-12.5-WH1	M3-95-12.5-YE1	12,5	4	2.000	4840
			M3-95-25-WH1	M3-95-25-YE1	25	2	1.000	4842
			M3-95-50-WH1	M3-95-50-YE1	50	1	500	4844
12,7	4,85 ÷ 11	6 ÷ 35	M3-127-12.5-WH1	M3-127-12.5-YE1	12,5	4	2.000	4850
			M3-127-25-WH1	M3-127-25-YE1	25	2	1.000	4852
			M3-127-50-WH1	M3-127-50-YE1	50	1	500	4854
19	7 ÷ 17	16 ÷ 50	M3-190-50-WH1	M3-190-50-YE1	50	1	500	4864
25,4	9 ÷ 23	25 ÷ 120	M3-254-50-WH1	M3-254-50-YE1	50	1	300	4874





LADDER, ON BOTH SIDES

TERMO-ROLL M3



Internal Ø before shrinking mm	Cable ext. Ø range mm	Cable c.s.a range mm ²	white	yellow	Length mm	Tubes per step	Quantity	SW Code
2,4	1 ÷ 2,2	0,25 ÷ 0,5	M3-24-25-WH2	M3-24-25-YE2	25	2	2.000	4802
			M3-24-50-WH2	M3-24-50-YE2	50	1	1.000	4804
3,2	1,2 ÷ 2,8	0,25 ÷ 1	M3-32-25-WH2	M3-32-25-YE2	25	2	2.000	4812
			M3-32-50-WH2	M3-32-50-YE2	50	1	1.000	4814
4,8	1,8 ÷ 4,2	0,5 ÷ 2,5	M3-48-25-WH2	M3-48-25-YE2	25	2	2.000	4822
			M3-48-50-WH2	M3-48-50-YE2	50	1	1.000	4824
6,4	2,5 ÷ 5,8	1 ÷ 6	M3-64-25-WH2	M3-64-25-YE2	25	2	2.000	4832
			M3-64-50-WH2	M3-64-50-YE2	50	1	1.000	4834
9,5	3,8 ÷ 8	4 ÷ 16	M3-95-25-WH2	M3-95-25-YE2	25	2	1.000	4842
			M3-95-50-WH2	M3-95-50-YE2	50	1	500	4844
12,7	4,85 ÷ 11	6 ÷ 35	M3-127-25-WH2	M3-127-25-YE2	25	2	1.000	4852
			M3-127-50-WH2	M3-127-50-YE2	50	1	500	4854
19	7 ÷ 17	16 ÷ 50	M3-190-25-WH2	M3-190-25-YE2	25	2	1.000	4862
			M3-190-50-WH2	M3-190-50-YE2	50	1	500	4864
25,4	9 ÷ 23	25 ÷ 120	M3-254-25-WH2	M3-254-25-YE2	25	2	600	4872
			M3-254-50-WH2	M3-254-50-YE2	50	1	300	4874

Internal Ø before shrinking mm	Cable ext. Ø range mm	Cable c.s.a range mm ²	white	yellow	Length mm	Tubes per step	Quantity	SW Code
2,4	1 ÷ 2,2	0,25 ÷ 0,5	M3-24-WH3		20		1	7000
			M3-24-WH3-50		50		1	7000
3,2	1,2 ÷ 2,8	0,25 ÷ 1	M3-32-WH3		20		1	7010
			M3-32-WH3-100		100		1	7010
4,8	1,8 ÷ 4,2	0,5 ÷ 2,5	M3-48-WH3	M3-48-YE3	20		1	7020
			M3-48-WH3-100		100		1	7020
6,4	2,5 ÷ 5,8	1 ÷ 6	M3-64-WH3	M3-64-YE3	20		1	7030
			M3-64-WH3-100		100		1	7030
9,5	3,8 ÷ 8	4 ÷ 16	M3-95-WH3	M3-95-YE3	15		1	7040
			M3-95-WH3-100		100		1	7040
12,7	4,8 ÷ 11	6 ÷ 35	M3-127-WH3	M3-127-YE3	15		1	7050
			M3-127-WH3-100		100		1	7050
19	7 ÷ 17	16 ÷ 50	M3-190-WH3	M3-190-YE3	15		1	7060
			M3-190-WH3-100		100		1	7060
25,4	9 ÷ 23	25 ÷ 120	M3-254-WH3	M3-254-YE3	15		1	7070

Insert the cable into the tube, shrink by applying a hot air flow.



heat gun EHG 2000 page 49
 support frame page 49
 ribbons page 50



CONTINUOUS, ON BOTH SIDES

