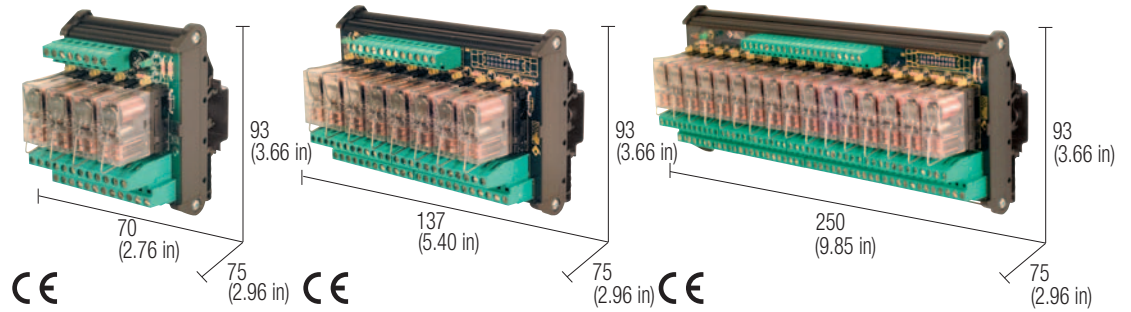


# 24 Vac/dc DPDT relay modules universal control voltage

- DC and AC control voltage
- Positive or negative control voltage
- Status LED display
- Pluggable relay



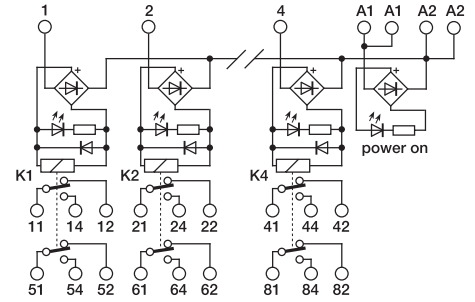
## NOTES

The height dimension includes 35 mm DIN rail.  
 (1) Relay model is not binding, they may be modified without prior warning. The technical data shown here is to be considered typical.  
 (2) Version available upon request.

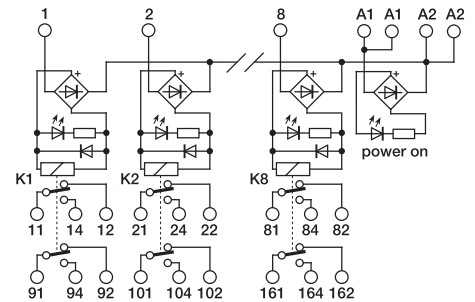
### POWER SUPPLY

A1 = +	A2 = -	negative common
A1 = -	A2 = +	positive common
A1 = ~	A2 = ~	AC power supply

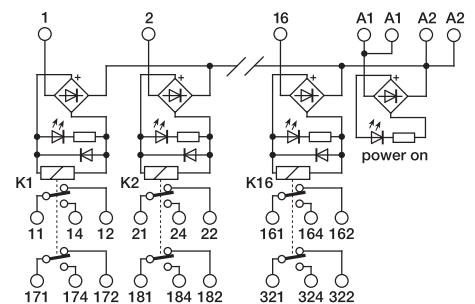
## BLOCK DIAGRAM



4 relay module



8 relay module



16 relay module

## VERSIONS

4 relay module

8 relay module

16 relay module

Cat. No. XR042EAD	Cat. No. XR082EAD	Cat. No. XR162EAD
R42EAD	R82EAD	R162EAD

## INPUT TECHNICAL DATA

Rated voltage	24 Vac/dc $\pm 10\%$
Rated current (1 channel)	22 mA $\pm 10\%$
Turn ON time	15 ms
Turn OFF time	5 ms
Protection circuit	damping diode and bridge rectifier

## OUTPUT TECHNICAL DATA

Type and number of contacts	DPDT AgNi
Nominal load (resistive)	8 A / 250 Vac
Current breaking power	8 A
Current of the fuse max.	—

## GENERAL TECHNICAL DATA

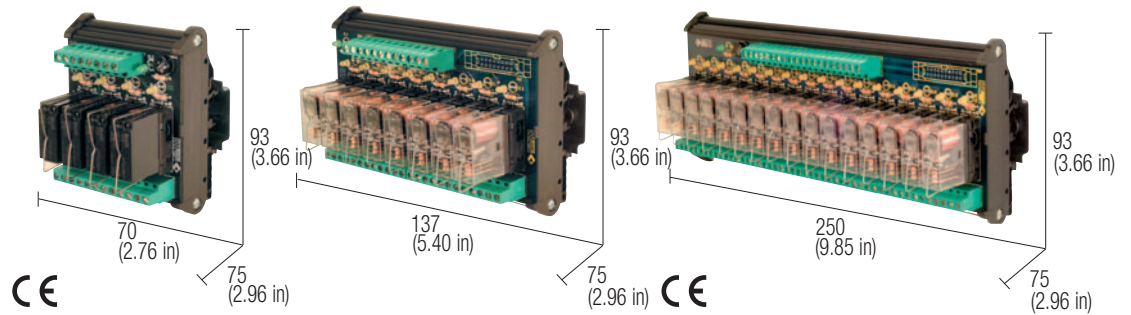
Operating temperature range	-10...+50°C
Coil/contact isolation	2.5 kVac / 60 s
Isolation between output terminals	1 kVac / 60 s (between open contact)
Protection degree	IP 00 IEC 529, EN60529
Overvoltage category / Pollution degree	III / 2
Reference Standard	IEC 664-1, DIN VDE 0110.1
Status display	green LED / yellow LED
Connection terminal	2.5 mm <sup>2</sup> fixed screw type
Housing material	UL94V-0 plastic material
Approx. weight	227 g (8.01 oz)   427 g (15.07 oz)   835 g (29.48 oz)
Mounting information	vertical on rail adjacent without gap

## MOUNTING ACCESSORIES

Mounting rail type according to IEC60715/TH35	PR/3/AC, PR/3/AC/ZB, PR/3/AS, PR/3/AS/ZB
Mounting rail type according to IEC60715/G32	PR/DIN/AC - PR/DIN/AS - PR/DIN/AL
Replacement relay (1)	Cat. No. 8904002
Screw type jumper	red white blue

# 24 Vac/dc SPDT relay modules universal control voltage

- DC and AC control voltage
- Positive or negative control voltage
- Status LED display
- Pluggable relay



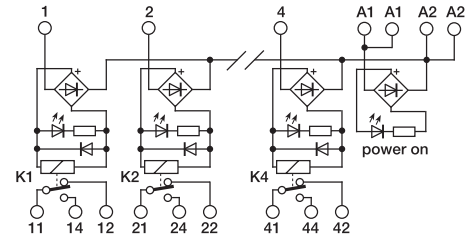
## NOTES

The height dimension includes 35 mm DIN rail.  
 (1) Relay model is not binding, they may be modified without prior warning. The technical data shown here is to be considered typical  
 (2) Version available upon request.

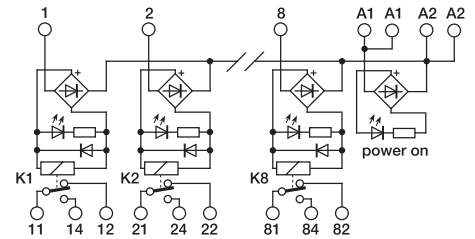
### POWER SUPPLY

A1 = +	A2 = -	negative common
A1 = -	A2 = +	positive common
A1 = ~	A2 = ~	AC power supply

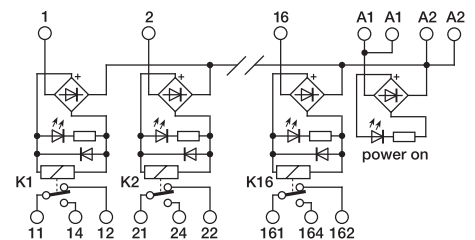
## BLOCK DIAGRAM



4 relay module



8 relay module



16 relay module

## VERSIONS

- 4 relay module
- 8 relay module
- 16 relay module

Cat. No. XR041EAD	Cat. No. XR081EAD	Cat. No. XR161EAD
R41EAD	R81EAD	R161EAD

## INPUT TECHNICAL DATA

Rated voltage	24 Vac/dc $\pm$ 10%
Rated current (1 channel)	22 mA $\pm$ 10%
Turn ON time	15 ms
Turn OFF time	5 ms
Protection circuit	damping diode and bridge rectifier

## OUTPUT TECHNICAL DATA

Type and number of contacts	SPDT AgSnO <sub>2</sub>
Nominal load (resistive)	12 A / 250 Vac
Current breaking power	12 A
Current of the fuse max.	—

## GENERAL TECHNICAL DATA

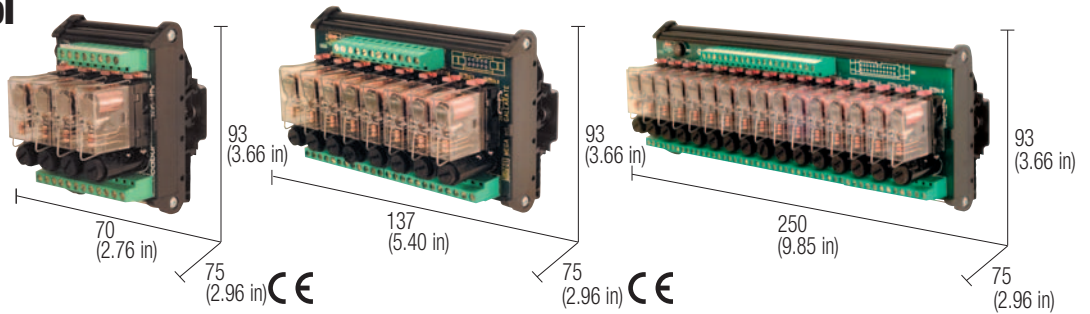
Operating temperature range	-10...+50°C
Coil/contact isolation	2.5 kVac / 60 s
Isolation between output terminals	1 kVac / 60 s (between open contact)
Protection degree	IP 00 IEC 529, EN60529
Overtoltage category / Pollution degree	III / 2
Reference Standard	IEC 664-1, DIN VDE 0110.1
Status display	green LED / yellow LED
Connection terminal	2.5 mm <sup>2</sup> fixed screw type
Housing material	UL94V-0 plastic material
Approx. weight	192 g (6.76 oz)   345 g (12.18 oz)   688 g (24.29 oz)
Mounting information	vertical on rail adjacent without gap

## MOUNTING ACCESSORIES

Mounting rail type according to IEC60715/TH35	PR/3/AC, PR/3/AC/ZB, PR/3/AS, PR/3/AS/ZB
Mounting rail type according to IEC60715/G32	PR/DIN/AC - PR/DIN/AS - PR/DIN/AL
Replacement relay (1)	Cat. No. 8904001
Screw type jumper	red white blue

# 24 Vac/dc SPDT relay modules universal control voltage with fuse

- DC and AC control voltage
- Positive or negative control voltage
- Status LED display
- Pluggable relay
- Output contact with protection fuse



## NOTES

The height dimension includes 35 mm DIN rail. (1) Relay model is not binding, they may be modified without prior warning. The technical data shown here is to be considered typical. (2) The interface is supplied without a fuse and the screw plug of the fuse-holder is provided in a bag inside the packaging. The fuse must be dimensioned according to load. The max. value of 6.3 A is referred to EN60127-complying fuses and the homologation rated current of the fuseholder. Fuses of a higher value may damage the fuseholder and module.

## VERSIONS

4 relay module

8 relay module

16 relay module

## INPUT TECHNICAL DATA

Rated voltage	24 Vac/dc $\pm 10\%$
Rated current (1 channel)	22 mA $\pm 10\%$
Turn ON time	15 ms
Turn OFF time	10 ms
Protection circuit	damping diode and bridge rectifier

## OUTPUT TECHNICAL DATA

Type and number of contacts	SPDT AgSnO <sub>2</sub> per 4 relé
Nominal load (resistive)	12 A / 250 Vac
Current breaking power	12 A
Current of the fuse max.	6,3 A (2)

## GENERAL TECHNICAL DATA

Operating temperature range	-10...+50°C
Coil/contact isolation	2.5 kVac / 60 s
Isolation between output terminals	1 kVac / 60 s (between open contact)
Protection degree	IP 00 IEC 529, EN60529
Overvoltage category / Pollution degree	III / 2
Reference Standard	IEC 664-1, DIN VDE 0110.1
Status display	green LED / yellow LED
Connection terminal	2.5 mm <sup>2</sup> fixed screw type
Housing material	UL94V-0 plastic material
Approx. weight	210 g (7.41 oz)   326 g (11.51 oz)   770 g (27.18 oz)
Mounting information	vertical on rail adjacent without gap

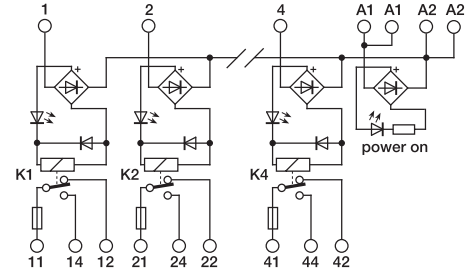
## MOUNTING ACCESSORIES

Mounting rail type according to IEC60715/TH35	PR/3/AC, PR/3/AC/ZB, PR/3/AS, PR/3/AS/ZB
Mounting rail type according to IEC60715/G32	PR/DIN/AC - PR/DIN/AS - PR/DIN/AL
Replacement relay (1)	Cat. No. 8904001
Screw type jumper	red — white — blue —

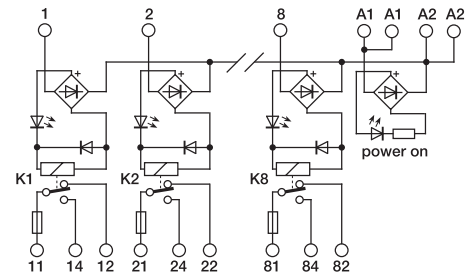
## POWER SUPPLY

A1 = +	A2 = -	negative common
A1 = -	A2 = +	positive common
A1 = ~	A2 = ~	AC power supply

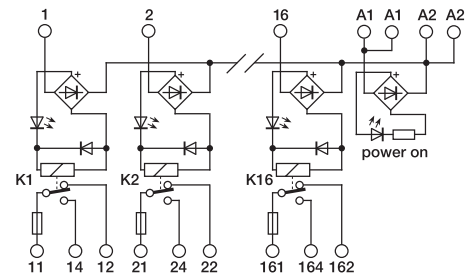
## BLOCK DIAGRAM



4 relay module



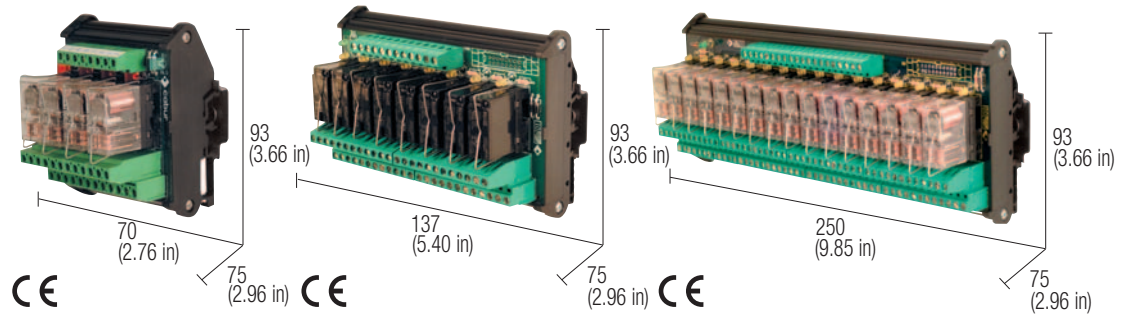
8 relay module



16 relay module

# 24 Vdc DPDT relay modules negative common

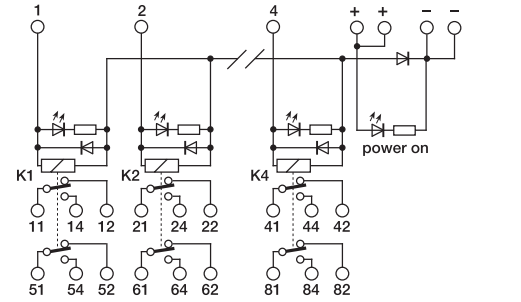
- DC control voltage
- Negative control voltage
- Status LED display
- Pluggable relay



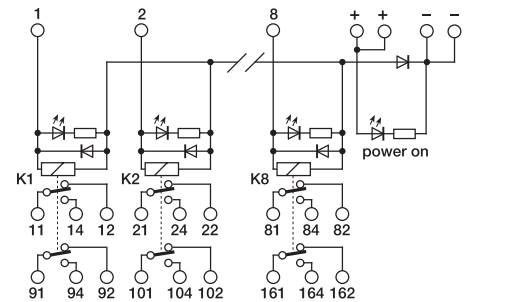
## NOTES

The height dimension includes 35 mm DIN rail.  
 (1) Relay model is not binding, they may be modified without prior warning. The technical data shown here is to be considered typical.

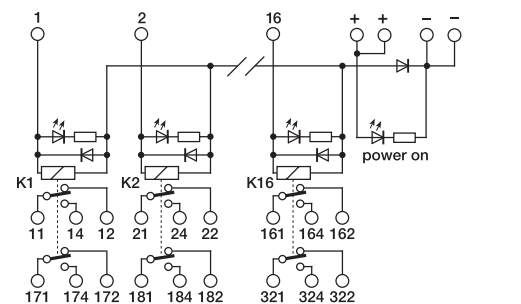
## BLOCK DIAGRAM



4 relay module



8 relay module



16 relay module

## VERSIONS

4 relay module

8 relay module

16 relay module

Cat. No. XR042E24	Cat. No. XR082E24	Cat. No. XR162E24
R42E24	R82E24	R162E24

## INPUT TECHNICAL DATA

Rated voltage	24 Vdc $\pm$ 10%
Rated current (1 channel)	22 mA $\pm$ 10%
Turn ON time	15 ms
Turn OFF time	10 ms
Protection circuit	damping and polarity protection diode

## OUTPUT TECHNICAL DATA

Type and number of contacts	DPDT AgNi
Nominal load (resistive)	8 A / 250 Vac
Current breaking power	8 A
Current of the fuse max.	—

## GENERAL TECHNICAL DATA

Operating temperature range	-10...+50°C
Coil/contact isolation	2.5 kVac / 60 s
Isolation between output terminals	1 kVac / 60 s (between open contact)
Protection degree	IP 00 IEC 529, EN60529
Overtoltage category / Pollution degree	III / 2
Reference Standard	IEC 664-1, DIN VDE 0110.1
Status display	green LED / yellow LED
Connection terminal	2.5 mm <sup>2</sup> fixed screw type
Housing material	UL94V-0 plastic material
Approx. weight	225 g (7.94 oz)   419 g (14.78 oz)   811 g (28.60 oz)
Mounting information	vertical on rail adjacent without gap

## MOUNTING ACCESSORIES

Mounting rail type according to IEC60715/TH35	PR/3/AC, PR/3/AC/ZB, PR/3/AS, PR/3/AS/ZB
Mounting rail type according to IEC60715/G32	PR/DIN/AC - PR/DIN/AS - PR/DIN/AL
Replacement relay (1)	Cat. No. 8904002
Screw type jumper	red white blue