

DBC.4 - ON TWO LEVELS

2 feed - through levels
Feed - through with internal cross - connection
Suitable for housing components
Mounting onto PR/3 type rails according to IEC 60715 - TH/35 type
Available in grey colour or (Ex)i "intrinsic safety" circuits versions
Four slots meant for insert permanent cross-connection "Easy Bridge"



Grey version	DBC.4/GR Cat. No. DB400GR	DBC.4/CI/GR Cat. No. DB417GR
---------------------	--	---

(Ex)i version	DBC.4 (Ex)i Cat. No. DB500	DBC.4/CI (Ex)i Cat. No. DB517
----------------------	---	--

Technical Characteristics		
----------------------------------	---	--

Function/Type	2 level feed - through	feed-through equipped with internal cross connection
Rated cross-section (mm ²)	4	4
Connecting capacity		
flexible (mm ²)	0,2 ÷ 6	0,2 ÷ 6
rigid (mm ²)	0,2 ÷ 6	0,2 ÷ 6
max. flexible with ferrule (mm ²) - ferrule	4 - WP40/16	4 - WP40/16
Rated voltage/ rated current/ gauge	Conf to IEC 60947-7-1	630V / 32 A / A4
Rated voltage/ rated current/ AWG	Conf. to UL - cUL	-
Rated voltage/ rated current/ (Ex) e		
Rated impulse withstand voltage/ pollution degree	8 kV / 3	8 kV / 3
Insulation stripping length (mm)	9	9
Tightening torque value (test/ max) (Nm)	0,5 / 1	0,5 / 1
Height/ width/ thickness TH/35 7,5 (mm)	66 / 70 / 6	66 / 70 / 6
Height/ width/ thickness TH/35 15 (mm)	74 / 70 / 6	74 / 70 / 6

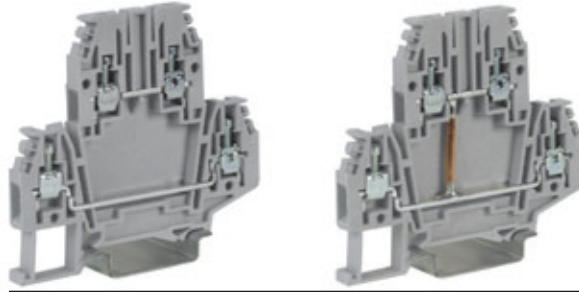
APPROVALS		
------------------	---	--

ACCESSORIES		Type	Cat. No.	Type	Cat. No.
End sections	grey	DBC.4/PT/GR	DB401GR	DBC.4/PT/GR	DB401GR
	blue	DBC.4/PT (Ex)i	DB402	DBC.4/PT (Ex)i	DB402
Permanent cross connection (*) (intrinsically IPXXB once mounted)	2 poles	PTC/4/02	PTC0402	PTC/4/02	PTC0402
	3 poles	PTC/4/03	PTC0403	PTC/4/03	PTC0403
	5 poles	PTC/4/05	PTC0405	PTC/4/05	PTC0405
	10 poles	PTC/4/10	PTC0410	PTC/4/10	PTC0410
	50 poles	PTC/4/00	PTC0400	PTC/4/00	PTC0400
Rated current carrying capacity of jumper (applic.Ex e)	(A)	32 (25)		32 (25)	
Cross-connection identification strip		PTC/SP	PT0990	PTC/SP	PT0990
Coloured partition	red	DFU/7/R	DU07R	DFU/7/R	DU07R
Cross connection barrier (upper level)	red	DFM/800-DFM/900	DF800-DF900	DFM/800-DFM/900	DF800-DF900
Cross connection barrier (lower level)	red	DFM/500	DF500	DFM/500	DF500
Marking tag	pitch assembly	CNU/10/11	NU1061	CNU/10/11	NU1061
		CNU/8/61	NU0861	CNU/8/61	NU0861
	single assembly	CNU/8/51	NU0851	CNU/8/51	NU0851
		CNU/10/51	NU1051	CNU/10/51	NU1051
End bracket		BTU for PR/DIN and PR/3	BT005	BTU for PR/DIN and PR/3	BT005
		BT/3-BTO only for PR/3	BT003-BT007	BT/3-BTO only for PR/3	BT003-BT007

On two levels

with UL94V-0 polyamide insulating body

- feed-through
- feed-through, equipped with internal cross-connection
- available in standard (grey RAL 7042 and beige RAL 1001 colours) or (Ex)i “intrinsic safety” circuits (blue RAL 5015 colour) versions
- to be mounted onto PR/3 according to IEC 60715 Std., “TH/35” type



PTC jumper configurations					
SINGLE OR PARALLEL EXTENDING	POLE SKIPPING	ADJACENT WITHOUT BARRIER	ADJACENT WITH BARRIER	STAGGERED MODE	PARALLEL SKIPPING
Insulation voltage in the above configurations (V)					
630	500	250 V (*) 630 V (**)	500	500	

(*) between lower levels (with partition)
 (**) between upper levels (with partition)
 (***) value referred to the characteristics of the terminal block alone, within the temperature range according to IEC 60947-7-1 Std.

The /GR tag indicates the grey colour version.

grey version
beige version
(Ex)i version
TECHNICAL CHARACTERISTICS
function / type
rated cross-section (mm ²)
connecting capacity
flexible (mm ²)
rigid (mm ²)
max. flexible with ferrule (mm ²)-ferrule type
rated voltage / rated current / gauge conf. to IEC 60947-7-1
rated voltage / rated current / AWG / tightening torque value UL
max current (***)
(Ex e) rated voltage / (V)
rated impulse withstand voltage / pollution degree
insulation stripping length (mm)
tightening torque value (test / max) (Nm)
height / width / thickness TH/35 7,5 mm
height / width / thickness TH/35 15 mm

DBC.2/GR Cat. No. DB100GR
DBC.2 Cat. No. DB100
DBC.2 (Ex)i Cat. No. DB200
2 level feed-through
2,5
0,2 ÷ 4
0,2 ÷ 4
2,5 - WP25/14
630 V / 24 A / A3
600 V / 20 A / 28-12 AWG / 8 lb.in
27 A (2,5 mm ²) / 34 A (4 mm ²)
-
8 KV / 3
9
0,4 / 0,8
66 / 70 / 5
74 / 70 / 5

DBC.2/CI/GR Cat. No. DB117GR
DBC.2/CI Cat. No. DB117
2 level feed-through with internal cross-connection
2,5
0,2 ÷ 4
0,2 ÷ 4
2,5 - WP25/14
630 V / 24 A / A3
600 V / 20 A / 28-12 AWG / 8 lb.in
27 A (2,5 mm ²) / 34 A (4 mm ²)
-
8 KV / 3
9
0,4 / 0,8
66 / 70 / 5
74 / 70 / 5

APPROVALS



ACCESSORIES

End sections	grey beige blue
Permanent cross connection (intrinsically IPXXB protected once mounted)	
Rated current carrying capacity of jumper (A)	
Cross-connection identification strip (100 mm)	green
Switchable cross connection	
Multiple common bar	250 mm
Shunting screw and sleeve	
Coloured partition	red, green, white
Cross connection barrier (upper level)	red
Cross connection barrier (lower level)	red
Test plug socket	
Test plug	
Modular test plug	
End section for modular test plug	
Numbering strip	
Warning plate	on adjacent terminal blocks
Cover for cross-connection	
Marking tag	printed or blank
End bracket	
Mounting rail according to IEC 60715 Std.	

Type	Cat. No.
DBC/PT/GR	DB101GR
DBC/PT	DB101
DBC/PT (Ex)i	DB201
PTC/2/02 poles	PTC0202
PTC/2/03 poles	PTC0203
PTC/2/05 poles	PTC0205
PTC/2/10 poles	PTC0210
PTC/2/00 (50 poles)	PTC0200
24	
PTC/SP	PTC0990
-	
DFU/7	DU07..
DFM/800 - DFM/900	DF800-900
DFM/500	DF500
-	
CNU/8/51	NU0851
-	
CNU/8/51	NU0851
BTU for PR/DIN and PR/3	BT005
BTO for PR/3 only	BT007
-	
PR/3/AC for PR/DIN and PR/3	PRO03
PR/3/AS same with slots	PRO05

Type	Cat. No.
DBC/PT/GR	DB101GR
DBC/PT	DB101
DBC/PT (Ex)i	DB201
PTC/2/02 poles	PTC0202
PTC/2/03 poles	PTC0203
PTC/2/05 poles	PTC0205
PTC/2/10 poles	PTC0210
PTC/2/00 (50 poles)	PTC0200
24	
PTC/SP	PTC0990
-	
DFU/7	DU07..
DFM/800 - DFM/900	DF800-900
DFM/500	DF500
-	
CNU/8/51	NU0851
-	
CNU/8/51	NU0851
BTU for PR/DIN and PR/3	BT005
BTO for PR/3 only	BT007
-	
PR/3/AC for PR/DIN and PR/3	PRO03
PR/3/AS same with slots	PRO05

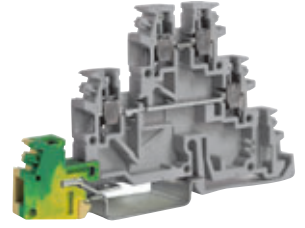
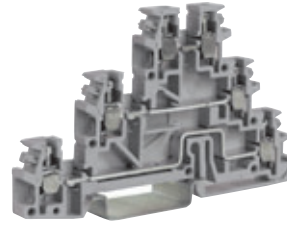
On two levels

with UL94V-0 polyamide insulating body

- 3 feed-through levels
- 3 levels + earth connection
- to be mounted onto TH 35-7,5 and TH 35-15 type rails - according to IEC 60715 Std.
- available in grey RAL 7042 and beige RAL 1001 colours



with earth connection on lower level



with earth connection on lower level and feed-through on intermediate and upper levels

The /GR tag indicates the grey colour version.

(*): 24 A factory wiring only

grey version	
beige version	
(Ex)i version	
TECHNICAL CHARACTERISTICS	
function / type	
rated cross-section	(mm ²)
connecting capacity	
flexible	(mm ²)
rigid	(mm ²)
max. flexible with ferrule (mm ²)-ferrule type	
rated voltage / rated current / gauge	conf. to IEC 60947-7-1
rated voltage / rated current / AWG / tightening torque value	UL (Ex e) rated voltage / (V)
rated impulse withstand voltage / pollution degree	
insulation stripping length	(mm)
tightening torque value (test / max)	(Nm)
height / width / thickness	TH/35 7,5 mm
height / width / thickness	TH/35 15 mm
height / width / thickness	G32

TLE.2/GR	Cat. No. TL400GR
TLE.2	Cat. No. TL400
TECHNICAL CHARACTERISTICS	
2 levels + earth for actuators	
2,5	
0,2 ÷ 4	
0,2 ÷ 4	
2,5 - WP25/14	
250 V / 24 A / A3	
600 V / 20 A (*) / 20 ÷ 12 AWG / 3,5 lb.in	
-	
4 KV / 3	
8	
0,4 / 0,8	
52 / 62,5 / 6,2	
60 / 62,5 / 6,2	
-	

TLD.2/GR	Cat. No. TL200GR
TLD.2	Cat. No. TL200
TLD.2 (Ex)i	Cat. No. TL300
TECHNICAL CHARACTERISTICS	
3 feed-through levels	
2,5	
0,2 ÷ 4	
0,2 ÷ 4	
2,5 - WP25/14	
250 V / 24 A / A3	
600 V / 15 A / 20-12 AWG / 3,5 lb.in	
-	
4 KV / 3	
8	
0,4 / 0,8	
52 / 85 / 6,2	
60 / 85 / 6,2	
-	

TDE.2/GR	Cat. No. TL500GR
TDE.2	Cat. No. TL500
TECHNICAL CHARACTERISTICS	
2 feed-through levels + earth	
2,5	
0,2 ÷ 4	
0,2 ÷ 4	
2,5 - WP25/14	
250 V / 24 A / A3	
600 V / 20 A (*) / 20 ÷ 12 AWG / 3,5 lb.in	
-	
4 KV / 3	
8	
0,4 / 0,8	
52 / 85 / 6,2	
60 / 85 / 6,2	
-	

APPROVALS



ACCESSORIES	
End sections	grey beige intermedio
Permanent cross connection	
Rated current carrying capacity of jumper	(A)
Switchable cross connection	
Multiple common bar	250 mm
Shunting screw and sleeve	
Coloured partition	red, green, white
Cross connection barrier	red
Test plug socket	
Test plug	
Modular test plug	
End section for modular test plug	
Numbering strip	
Warning plate	on adjacent terminal blocks
Cover for cross-connection	
Marking tag	printed or blank
End bracket	
Mounting rail	
according to IEC 60715 Std.	

Type	Cat. No.
TLS/PT/GR	TL101GR
TLS/PT	TL101
PM/20/2 poles	PM202
PM/30/3 poles	PM303
PM/30/5 poles	PM305
PM/30/10 poles	PM310
24	
POS/41	POS41
PMP/02	PMP02
CPM/21	CPM21
DFU/3	DU03..
DFM/400	DF400
PSD/D	PD004
SDD/1	DD001
-	
-	
-	
-	
PRP/5	PRP05
CNU/8/51	NU0851
BTU for PR/DIN and PR/3	BT005
BTO for PR/3 only	BT007
BT/3 for PR/3 only	BT003
-	
PR/3/AC of steel	PR003
PR/3/AS same with slots	PR005

Type	Cat. No.
TLD/PT/GR	TL201GR
TLD/PT	TL201
TLD/PI	TL202
PM/20/2 poles	PM202
PM/30/3 poles	PM303
PM/30/5 poles	PM305
PM/30/10 poles	PM310
24	
POS/41	POS41
PMP/02	PMP02
CPM/21	CPM21
DFU/3	DU03..
DFM/400	DF400
PSD/D	PD004
SDD/1	DD001
-	
-	
CNU/8/51	NU0851
-	
PRP/5	PRP05
CNU/8/51	NU0851
BTU for PR/DIN and PR/3	BT005
BTO for PR/3 only	BT007
BT/3 for PR/3 only	BT003
-	
PR/3/AC of steel	PR003
PR/3/AS same with slots	PR005

Type	Cat. No.
TLD/PT/GR	TL201GR
TLD/PT	TL201
PM/20/2 poles	PM202
PM/30/3 poles	PM303
PM/30/5 poles	PM305
PM/30/10 poles	PM310
24	
POS/41	POS41
PMP/02	PMP02
CPM/21	CPM21
DFU/3	DU03..
DFM/400	DF400
PSD/D	PD004
SDD/1	DD001
-	
-	
CNU/8/51	NU0851
-	
PRP/5	PRP05
CNU/8/51	NU0851
BTU for PR/DIN and PR/3	BT005
BTO for PR/3 only	BT007
BT/3 for PR/3 only	BT003
-	
PR/3/AC of steel	PR003
PR/3/AS same with slots	PR005