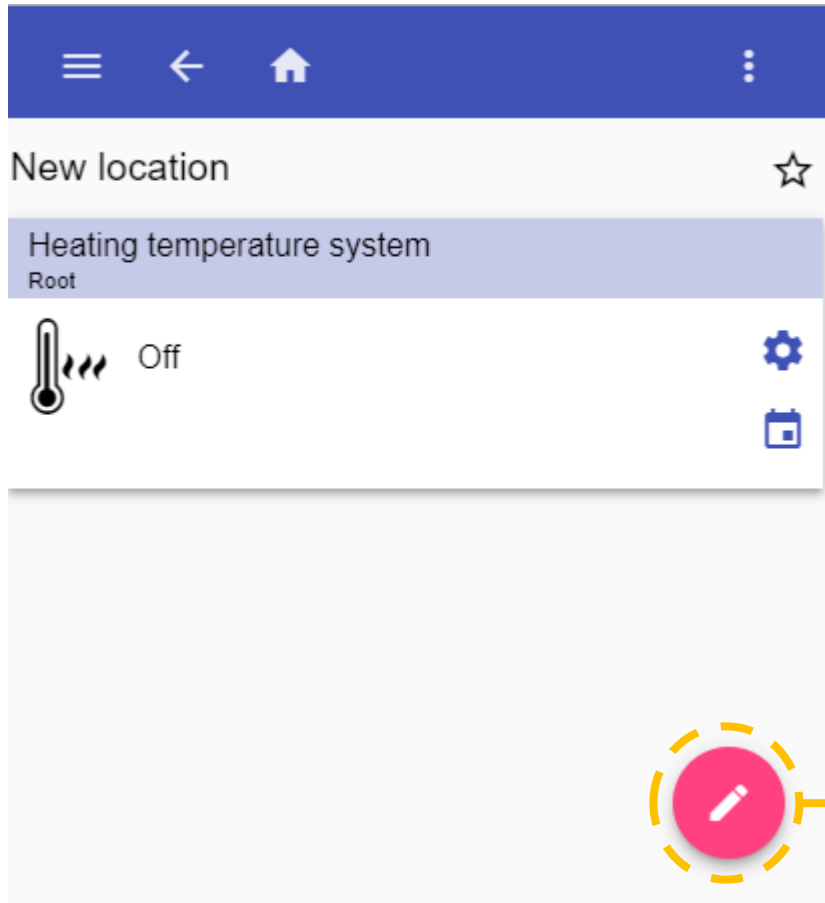
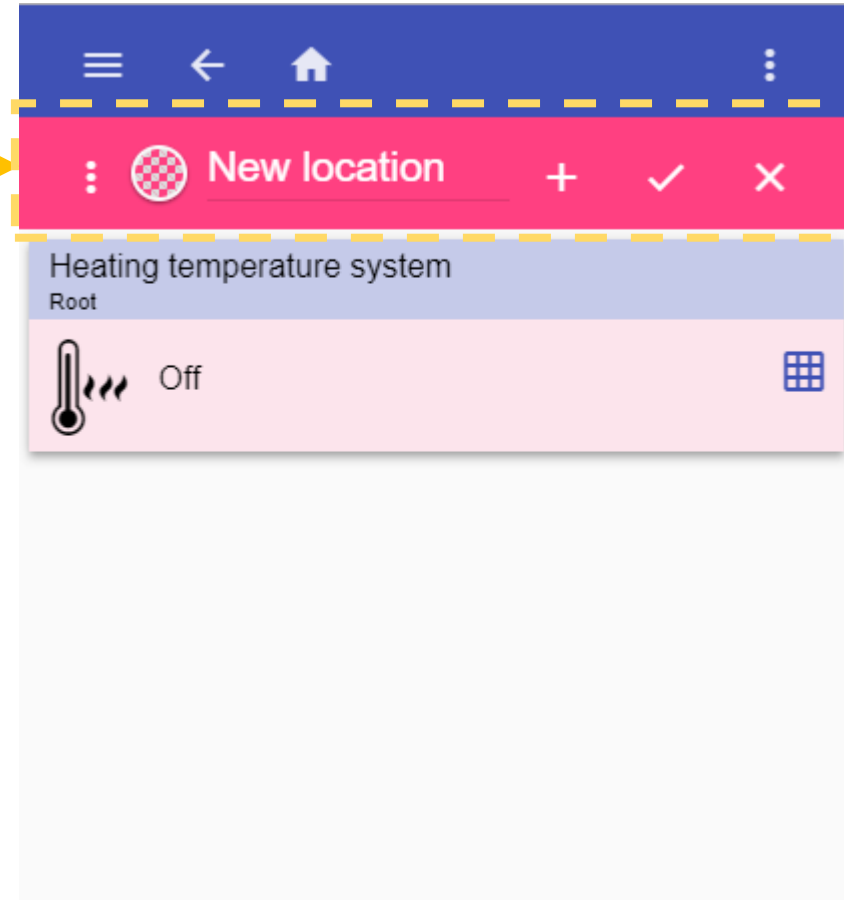


WEB-APP - CHARTS




1) Click the rounded button to enter the edit mode

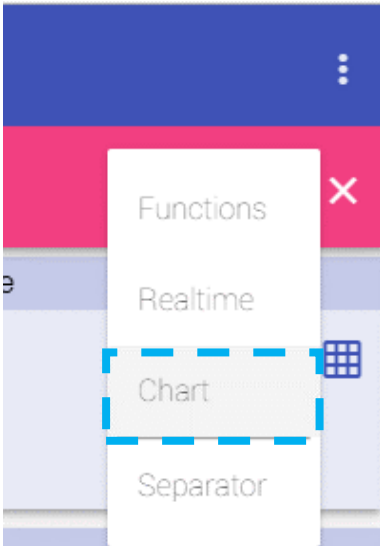


2) The edit bar will be shown in the top center of the page

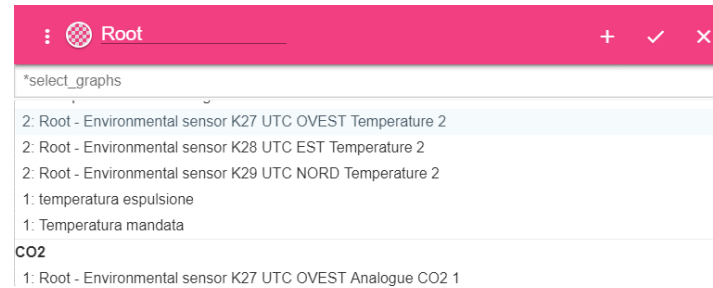
WEB-APP - CHARTS

How to create a chart

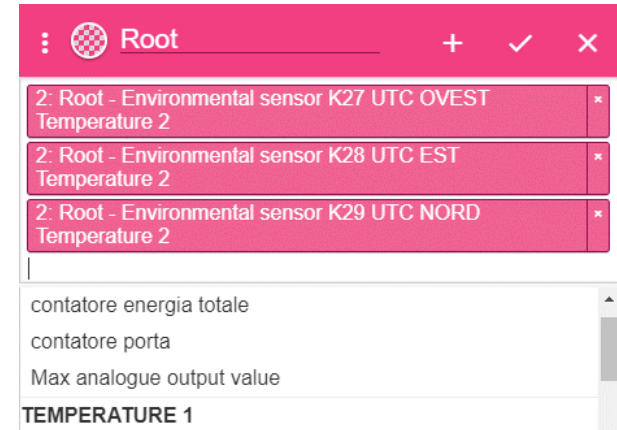
- 1) Click the  button to enter the edit mode and click on *Chart*



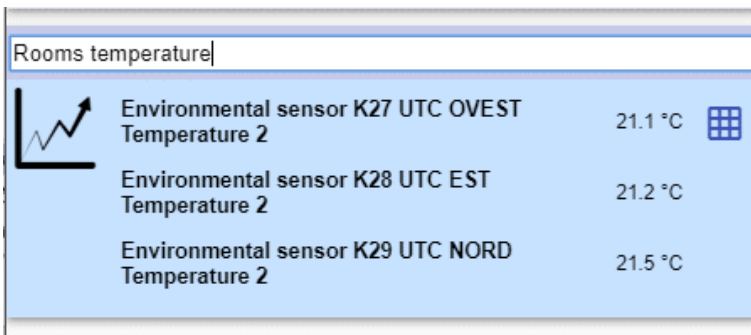
The available signals will be presented in the list, sorted by typology



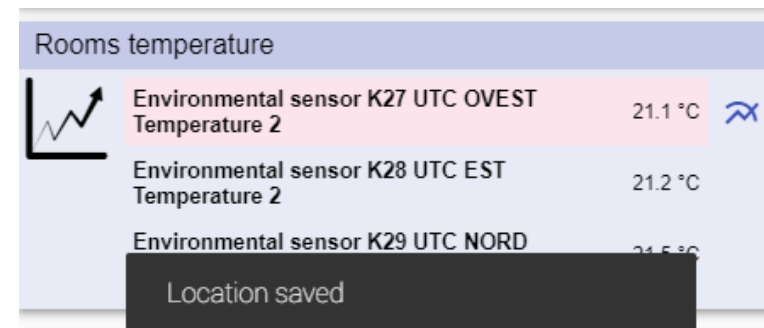
- 2) Click on a signal row to add it to the Chart tile. The signals that have already been added are shown above the list of the signals (as shown below)



- 3) Enter the label for the *Chart* tile



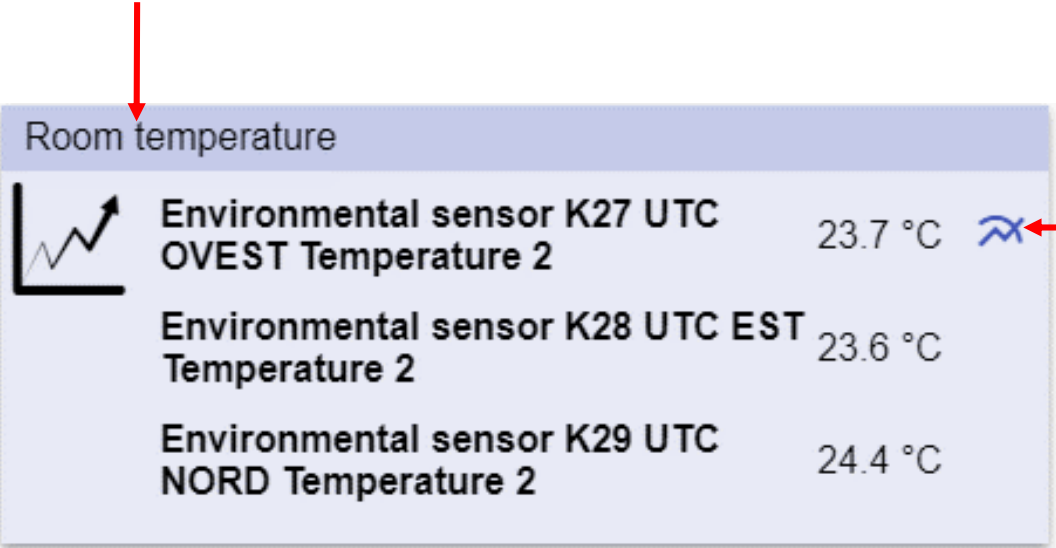
- 4) Click  to save the Chart tile



WEB-APP - CHARTS

Chart tile

Chart tile name



Click on the icon to access the chart page

The *Chart* tile shows the real-time value of the attached signals

WEB-APP - CHARTS

Buttons description

Rooms temperature

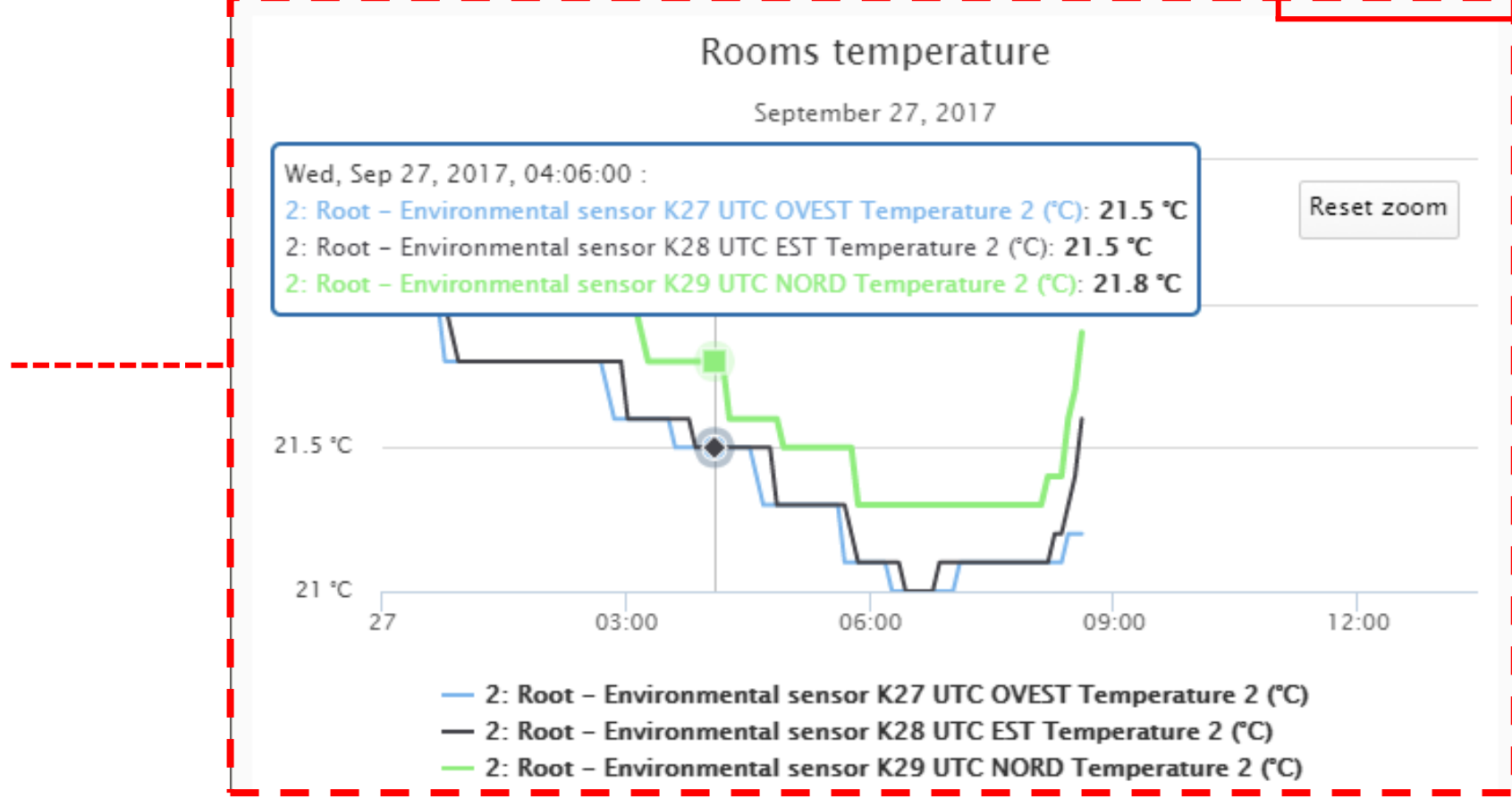
Daily chart Last 7 days Last twelve months

Range selector Today Last 7 days Last 12 months < September 27, 2017 >

Click the arrows to move back and forth

The current period is shown between the left and right arrows

Chart area



WEB-APP - CHARTS

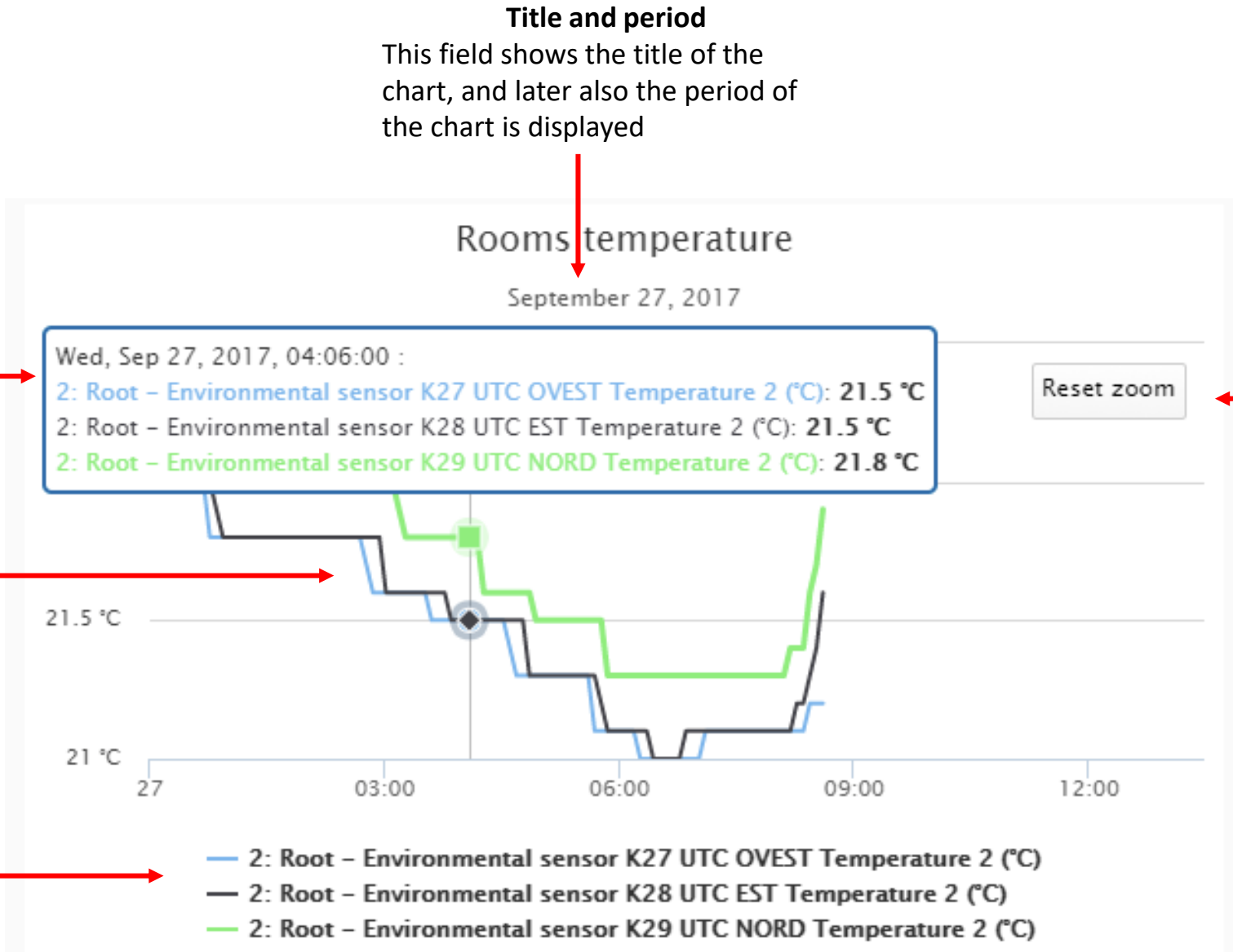
Chart area description

Title and period
This field shows the title of the chart, and later also the period of the chart is displayed

Tooltip
When hovering over a series or a point on the chart you can get a tooltip that describes the values on that particular part of the chart.

Series
This area presents on a chart the selected signals

Legend
The legend shows the data series in the chart and allows for enabling and disabling one or more signals.



Reset zoom

WEB-APP - CHARTS

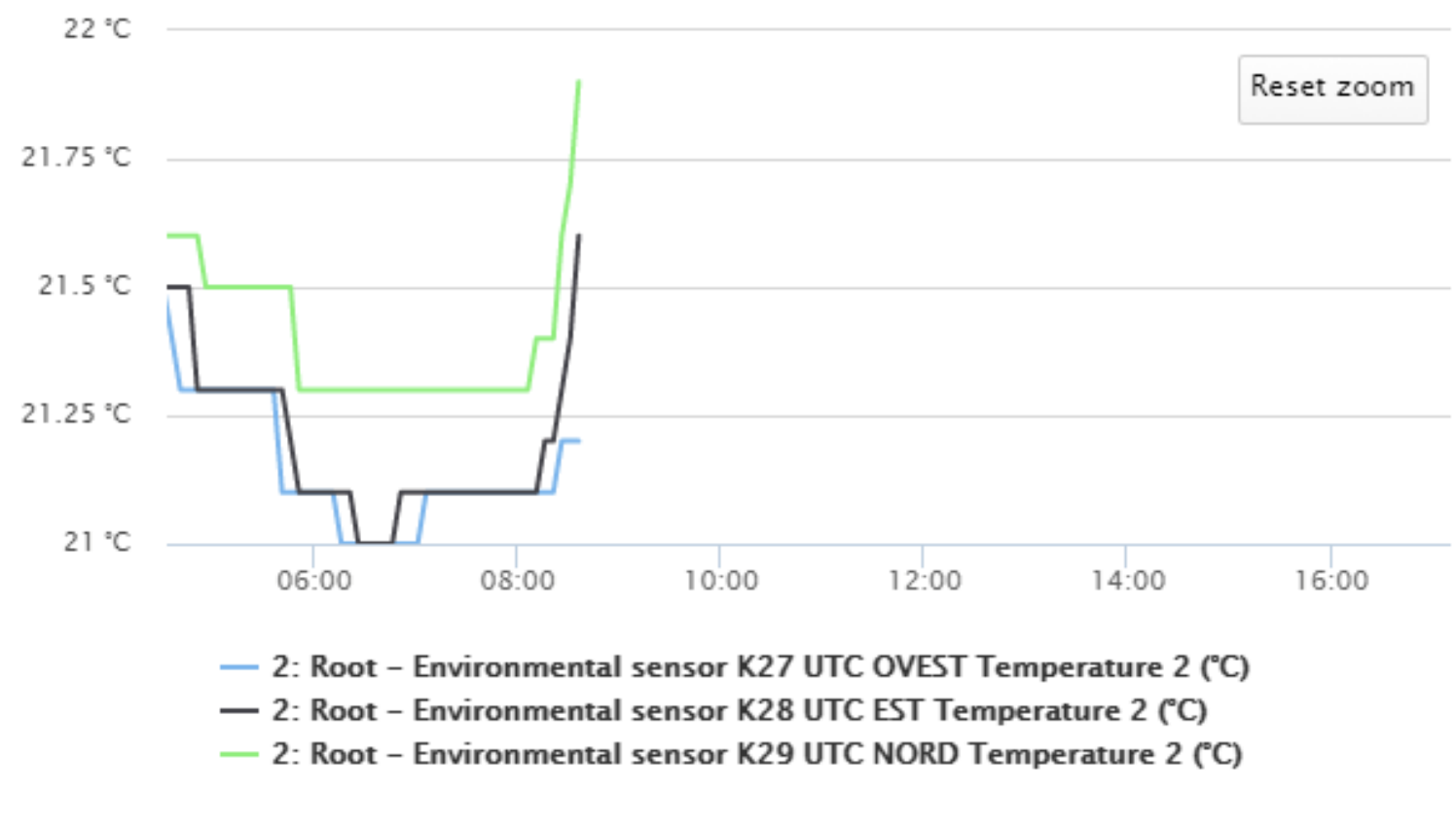
Zooming gestures

Zooming with mouse

With a mouse pointer, the zooming is performed by dragging out a rectangle in the chart.

Zooming on smart-devices

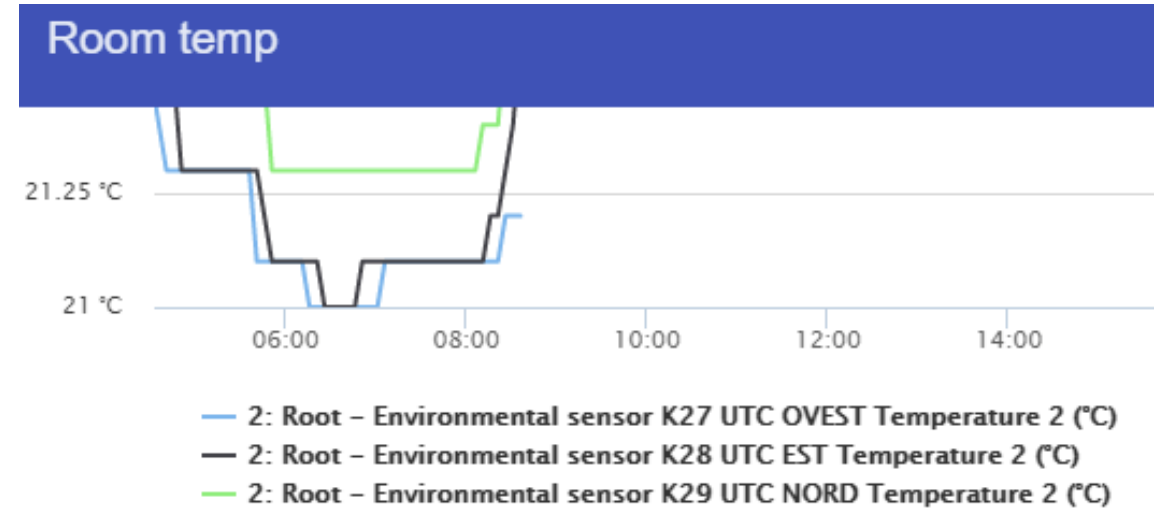
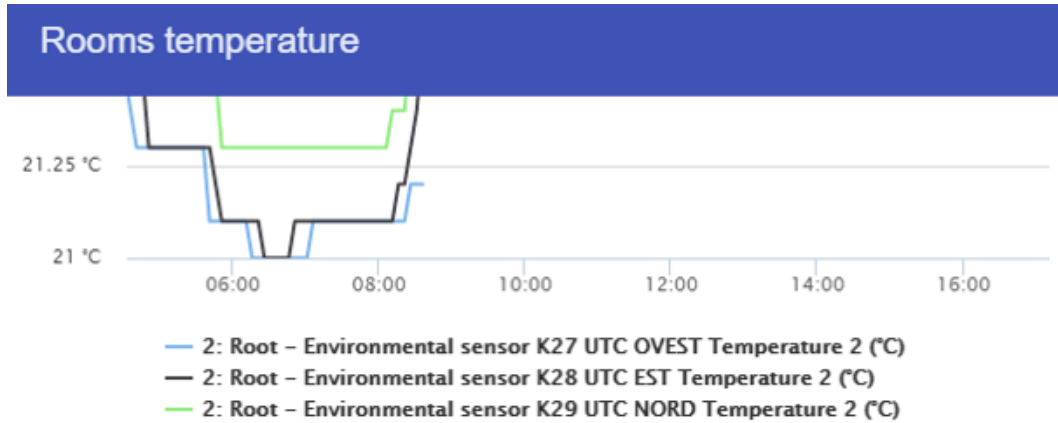
On touch devices, the user can zoom by pinching in the chart area. On these devices, the user may also move the zoomed area by panning with one finger across the chart.



Reset Zoom
The Reset zoom button will appear when a zoom IN or a Zoom OUT is performed by the user. Click the button to restore the default percentage

WEB-APP - CHARTS

Edit chart



Title
Rooms temperature|

Select parameters ▼

Aggregation period ▼

Preview Save chart Build file Cancel

Title
Room temp|

Select parameters ▼

Aggregation period ▼

The user can change the label of the *Chart*

WEB-APP - CHARTS

Select parameters

Module Data type

2: Root - Environmental sensor K27 UTC OVEST Temperature 2 ×
2: Root - Environmental sensor K28 UTC EST Temperature 2 ×
2: Root - Environmental sensor K29 UTC NORD Temperature 2 ×

	DMD	MIN	MAX
2: Root - Environmental sensor K27 UTC OVEST Temperature 2	Line	Line	Line
2: Root - Environmental sensor K28 UTC EST Temperature 2	Line	None	None
2: Root - Environmental sensor K29 UTC NORD Temperature 2	Line	None	None

Module:

When the **Module** box is selected, the signals are grouped by the module they belong to

Module Data type

Select parameters

K27 UTC OVEST

- 1: Root - Environmental sensor K27 UTC OVEST Analogue CO2 1
- 2: Root - Environmental sensor K27 UTC OVEST Temperature 2
- 3: Root - Environmental sensor K27 UTC OVEST Humidity 3

K28 UTC EST

- 1: Root - Environmental sensor K28 UTC EST Analogue CO2 1
- 2: Root - Environmental sensor K28 UTC EST Temperature 2

Data type:

When the **Data type** box is selected, the signals are grouped by engineering units

Module Data type

Select parameters

CO2

- 1: Root - Environmental sensor K27 UTC OVEST Analogue CO2 1
- 1: Root - Environmental sensor K28 UTC EST Analogue CO2 1
- 1: Root - Environmental sensor K29 UTC NORD Analogue CO2 1

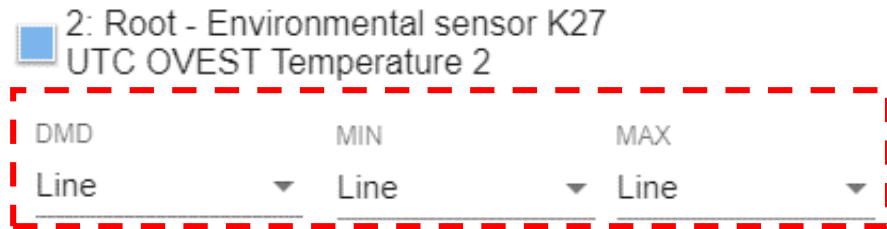
HUMIDITY

- 3: Root - Environmental sensor K27 UTC OVEST Humidity 3
- 3: Root - Environmental sensor K28 UTC EST Humidity 3

WEB-APP - CHARTS

Select type of chart

For each signal that has been added to the chart, the user can select the type of chart for DMD, MIN and MAX values

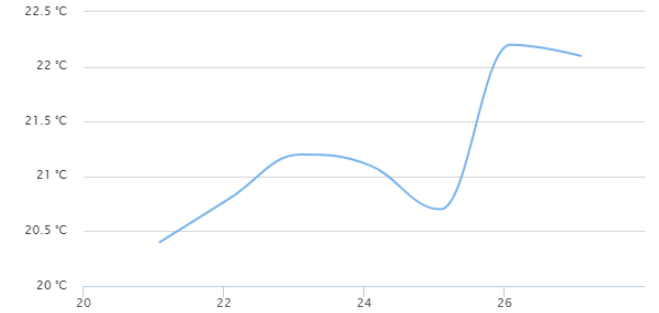


The available type of chart to represent the series are:

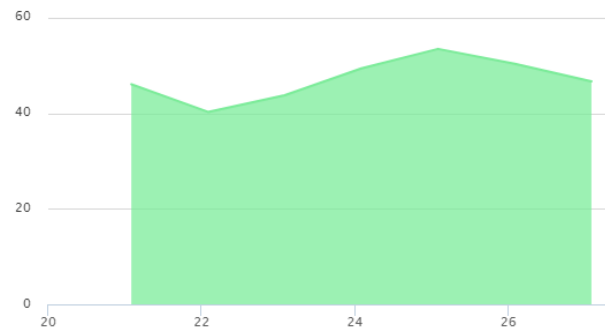
LINE



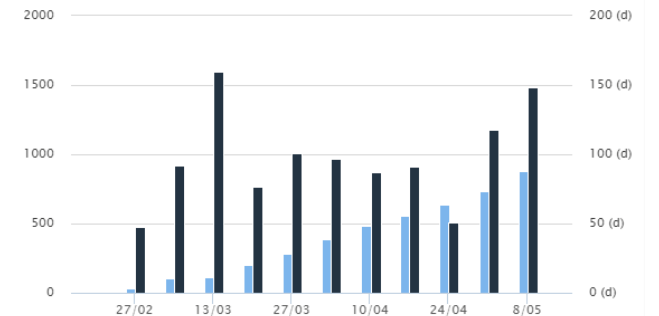
SPLINE



AREA



BAR



WEB-APP - CHARTS

Select the aggregation period

Aggregation period ^

Daily

Weekly

Monthly




Yearly

Last 7 days

Last 12 months

Custom period

Start date Start time End time

 10/01/2016  00:00  23:59

Aggregation period

No aggregation ▾

Based on the aggregation period, later will be shown the configuration parameters (green rectangle below)

Aggregation period	Available parameters
Daily	DD/MM/YYYY Start time (hh:mm) End time (hh:mm)
Weekly	DD/MM/YYYY
Montly	MM/YYYY
Yearly	YYYY
Last 7 days	No additional parameters
Lasy 12 Months	No additional parameters
Custom period	Start date (DD/MM/YYYY) Start time (hh:mm) End date (DD/MM/YYYY) End time (hh:mm)

WEB-APP - CHARTS

The example below shows how to set the chart for **Daily** period

Aggregation period

Daily Weekly Monthly Yearly Last 7 days

Last 12 months Custom period

Start date: 10/01/2016 Start time: 00:00 End time: 23:59

Aggregation period: No aggregation

Start date

2016
Sat, Oct 01

< October >

S	M	T	W	T	F	S
						1
	2	3	4	5	6	7
	8	9	10	11	12	13
	14	15	16	17	18	19
	20	21	22	23	24	25
	26	27	28	29	30	31

OK CANCEL

Start time & End time

08 :39

OK CANCEL

Aggregation period

10 Minutes

15 Minutes

20 Minutes

30 Minutes

60 Minutes

WEB-APP - CHARTS

Finestra proposta charts

If the user select **Compare** box in the *Aggregation period* option, it will be shown an additional series to compare the current period with the same length of time before the selected one).

E.g. If the current period is the current month, it will be shown also a series for the previous month

Aggregation period ^

Daily Weekly Monthly Yearly Last 7 days

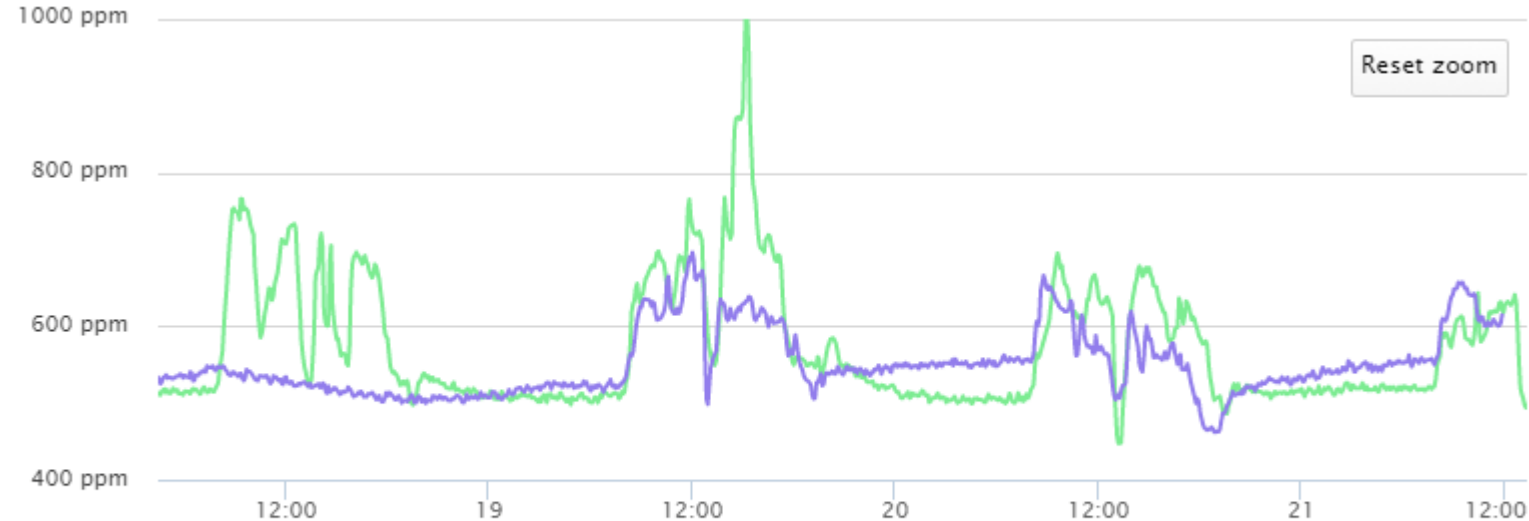
Last 12 months Custom period

Start date Start time End time
 10/01/2016 00:00 23:59

Aggregation period

No aggregation ▼

Compare



— 1: Root - Environmental sensor K27 UTC OVEST Analogue CO2 1 (ppm)

— 1: Root - Environmental sensor K27 UTC OVEST Analogue CO2 1 (prev) (ppm)

WEB-APP - CHARTS

Custom period

Start date

09/20/2017

Aggregation period

24 Hours

Compare

Preview

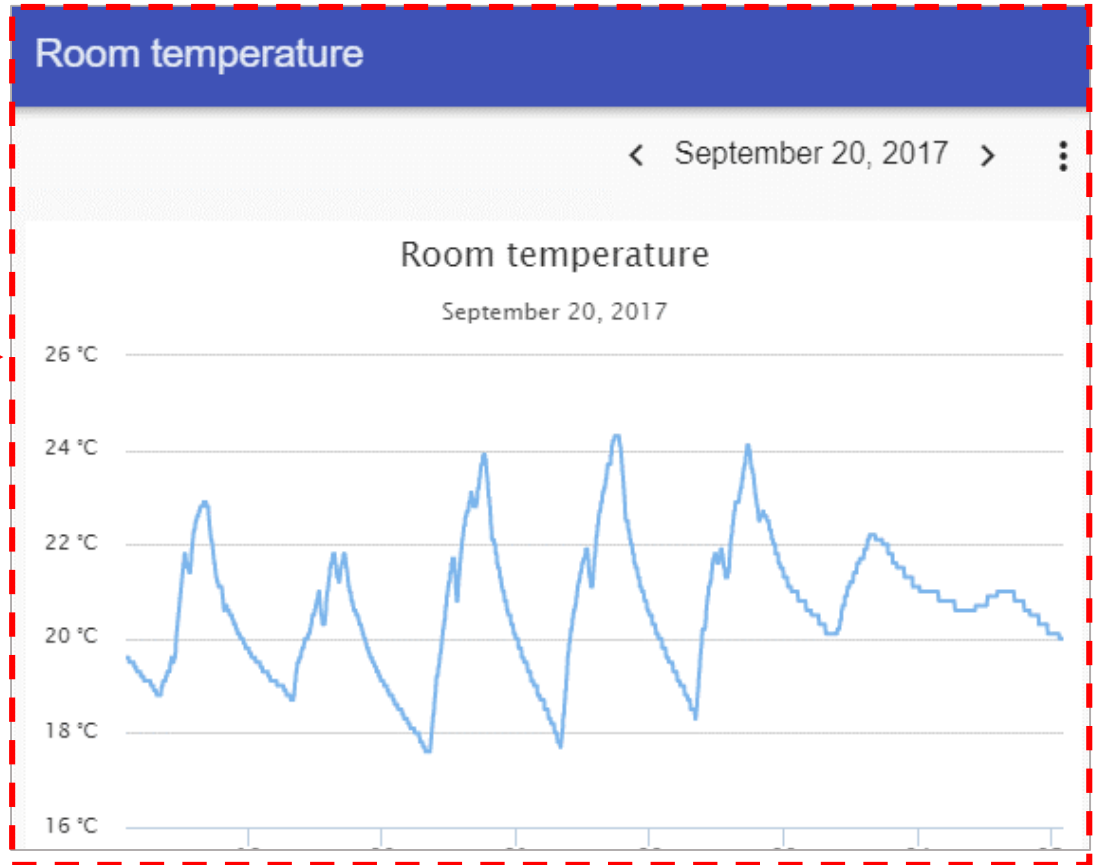
Save chart

Export data

Cancel

Preview

Clicking on the Preview button, the chart will be refreshed with the updated parameters



WEB-APP - CHARTS

Title
Room temperature

Select parameters ▼

Aggregation period ▼

Preview

Save chart

Build file

Cancel

Save chart

Clicking on the Save chart button, the chart will be saved and added to the page

Training room

Set point UTC On	vacanze invernali 2016 Off
controllo sp1 2 TEMPERATURA UFFICIO On	attivazione SP3 Off
accendi tutto Stopped Function active now 0	Stanza occupata On 00:00:00
spegni tutto Stopped Function active now 0	Room temperature Environmental sensor K2? UTC OVEST Temperature 2 23.1 °C

WEB-APP - CHARTS

Title

Room temperature

Select parameters



Aggregation period



Preview

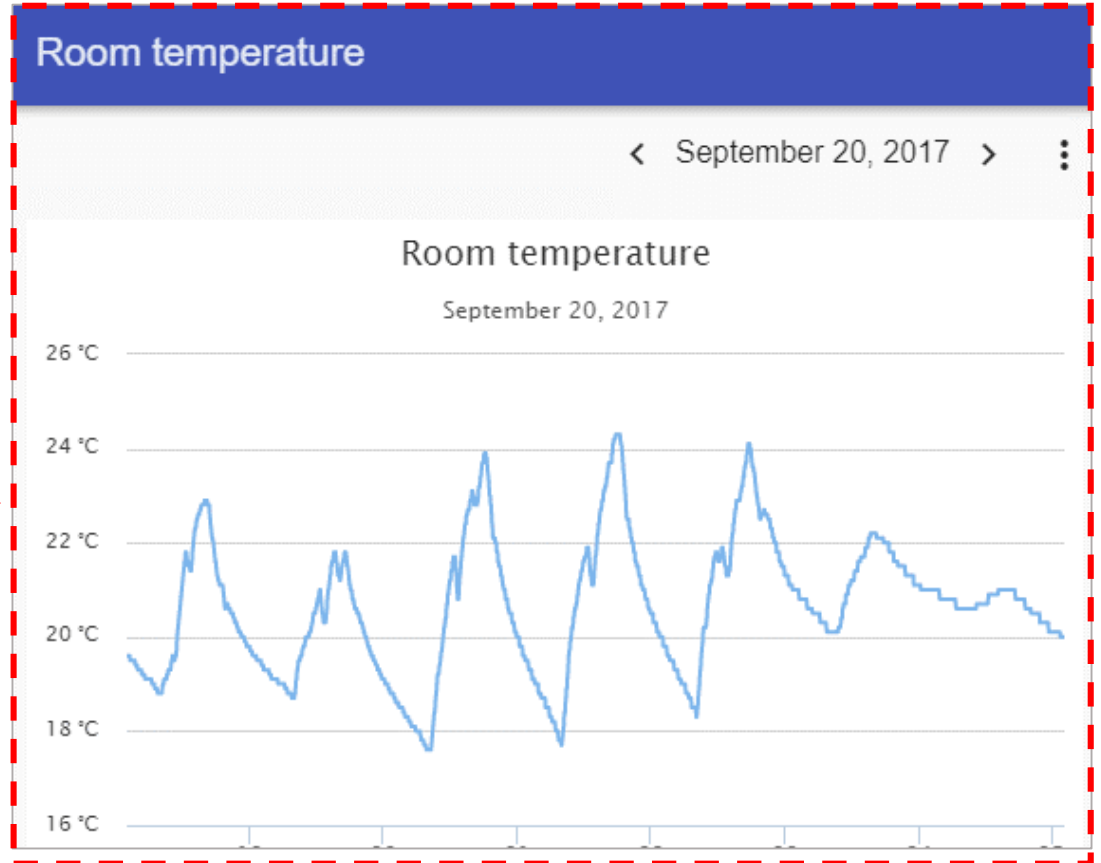
Save chart

Build file

Cancel

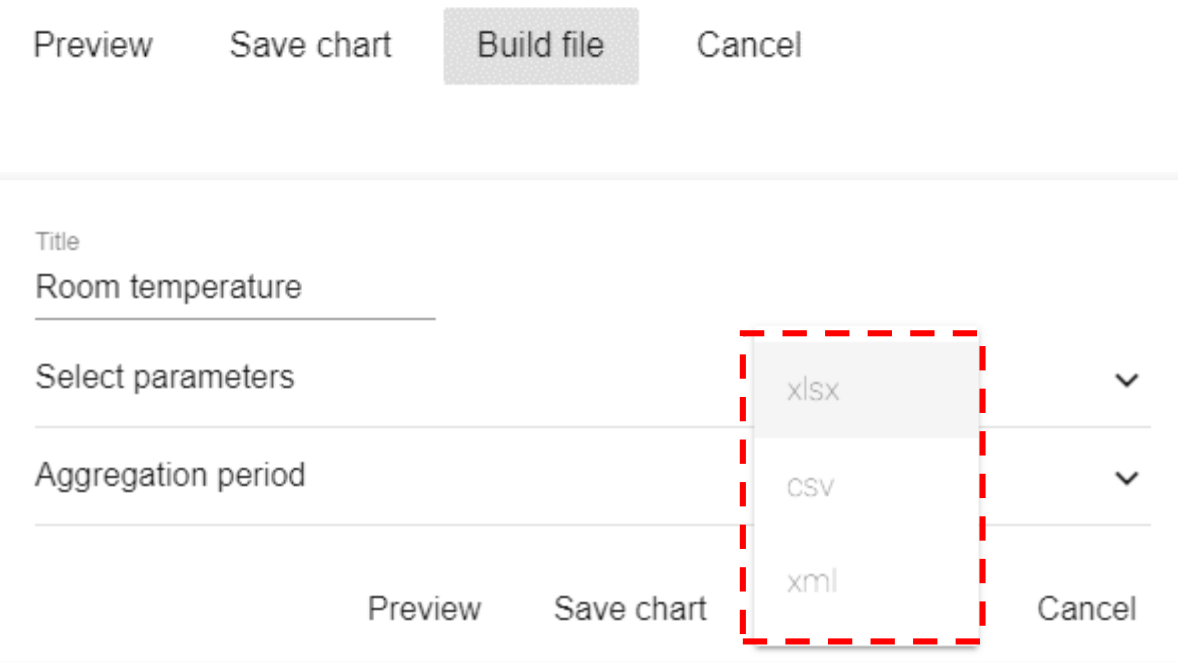
Build file

Clicking on the Build file button the Report file will be generated:

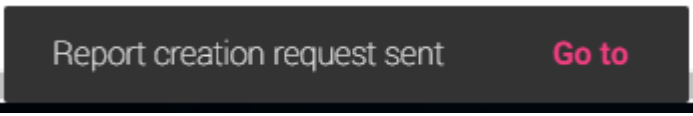


WEB-APP - CHARTS

1) The Report can be generated directly from the Chart, clicking on the Build file button



2) Click the Go to button to enter the Job page



3) The Job history page will show the list of Report files

The screenshot shows the 'Job history' page in the WEB-App. The page has a blue header with a home icon and the text 'WEB-App'. Below the header are four tabs: 'FTP/SMTP accounts', 'File tranfer settings', 'Customised requests', and 'Job history' (selected). The main content is a table with the following columns: 'FEED NAME', 'START DATE', and 'FILE NAME'. The table contains several rows of report data, each with a checkmark, a refresh icon, a list icon, and a user icon.

FEED NAME	START DATE	FILE NAME
✓ Current consumption	10/9/2017, 0:00:00	BN0580031000H_2017-10-09_23.59.59_T_d...
✓ Manual report	10/2/2017, 16:15:10	2017-10-08_23.59.59_BN0580031000H_T_al...
✓ Manual report	10/6/2017, 0:00:00	2017-10-06_23.59.59_BN0580031000H_T_al...
✓ Manual report	10/2/2017, 10:04:04	2017-10-08_23.59.59_BN0580031000H_T_al...
✓ Manual report	10/2/2017, 9:35:39	2017-10-08_23.59.59_BN0580031000H_T_al...
✓ Manual report	10/2/2017, 16:51:53	2017-10-08_23.59.59_BN0580031000H_T_al...
✓ Manual report	10/2/2017, 16:51:53	2017-10-08_23.59.59_BN0580031000H_T_al...
✓ temperature	10/5/2017, 0:00:00	BN0580031000H_2017-10-05_23.59.59_T_d...
✓ temperature	10/5/2017, 0:00:00	BN0580031000H_2017-10-05_23.59.59_T_d...
✓ Humidity	10/5/2017, 0:00:00	BN0580031000H_2017-10-05_23.59.59_T_d...