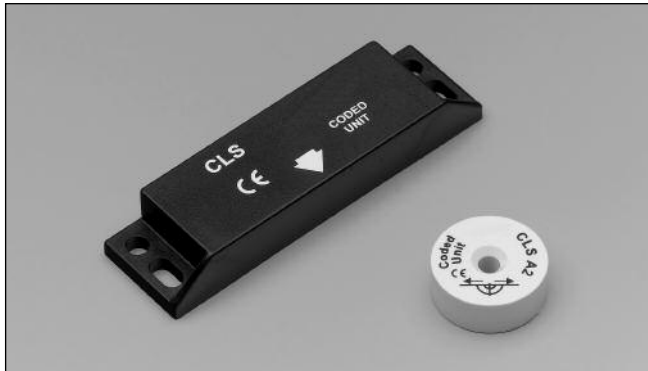


Safety magnetic sensors

Magnetic units

CLS series

CARLO GAVAZZI



- Multiple flux coded magnets
- Rectangular shape (CLS)
- Cylindrical shape plastic (CLSA2, CLSA3)
- Cylindrical shape metal (CLSA2M)

Product Description

The coded magnet series with SMS Safety magnetic sensors. Also metallic case is available (CLSA2M). Includes multiple flux rectangular and cylindrical magnets to be used together

Ordering Key

CLS A2 M

Safety Magnetic unit
 Housing
 Case Material

Type Selection

Body shape	Dimensions	Case material	Item code	Item Code (UL)
Rectangular	88 x 25 x 13 mm	Plastic	CLS	CLS D88 P M0
Cylindrical	Ø 25.1 x 9.3 mm	Plastic	CLS A2	CLS A25 P C0
Cylindrical	Ø 25.1 x 9.3 mm	Stainless steel	CLS A2 M	CLS A25 M N0
Cylindrical	Ø 30.0 x 16.0 mm	Plastic	CLS A3	CLS A30 P E0

General Specifications

Housing Dimensions CLS CLSA2 CLSA3 Material CLS, CLSAxxPxx CLSA2M	88 x 25 x 13 mm Ø 25.1 x 9.3 mm Ø 30.0 x 16.0 mm Plastic Stainless steel	Weight CLS CLSA2 CLSA2M CLSA3 Environment Degree of protection Operating temperature Storage temperature	Approx. 35 g Approx. 13 g Approx. 25 g Approx. 18 g IP 67 -25 to +70 °C -25 to +70 °C
-----------------------------------------------------------------------------------------------	------------------------------------------------------------------------------------------	----------------------------------------------------------------------------------------------------------------------------------------------------	-------------------------------------------------------------------------------------------------------------

Dimensions

