

GENIUSPRO

SYSTEM REQUIREMENTS FOR MINIMUM PERFORMANCE

- PC Processor Pentium®Dual-Core *inside*™
- 2 Gb RAM
- Windows: XP SP3 or Vista , 7 or 8
- Microsoft .NET Framework 4.0, if current is before 3.5, first install 3.5 then 4.0
- Internet connection for registration and License activation, software upgrade, remote access support and training
- USB connection
- 2 Gb available HD space
- CD drive
- Video resolution 1280x1024



Software installation

Driver installation

Registration process

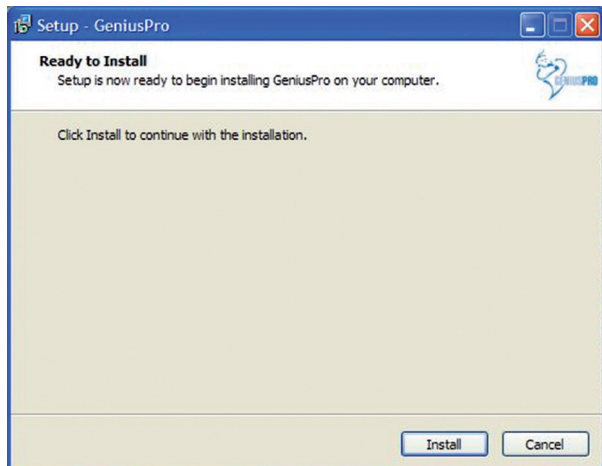
Activation process

Software configuration



GENIUSPRO SOFTWARE INSTALLATION

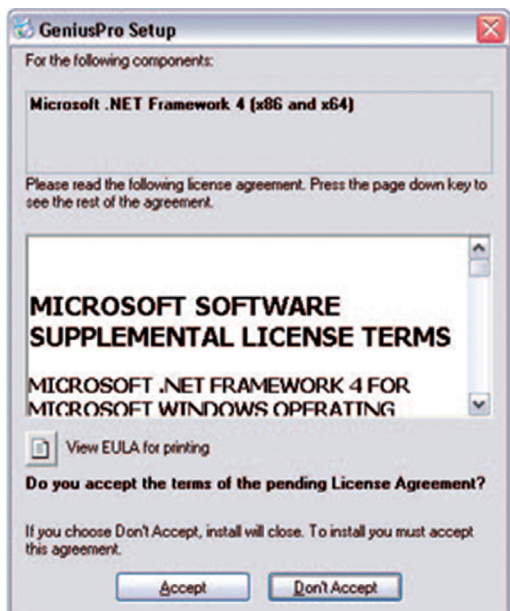
2



Insert the GENIUSPRO cd into the pc.

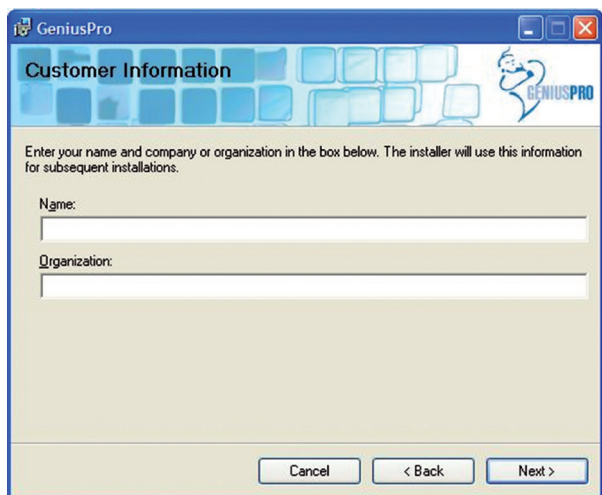
Wait for the Auto-run window, the installation process will then start automatically.

On the Ready to Install GENIUSPRO window, click *Install*



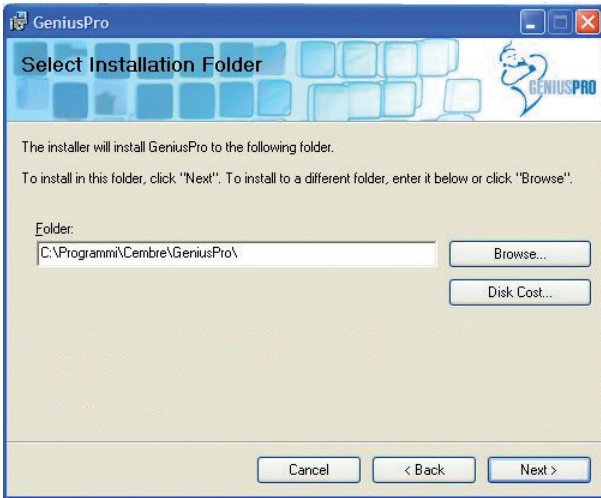
The setup checks for the presence of additional components including **Microsoft.Net Framework 4**; if necessary confirm component installation.

Confirm by clicking *Accept*



Insert Name and Organisation in appropriate field.

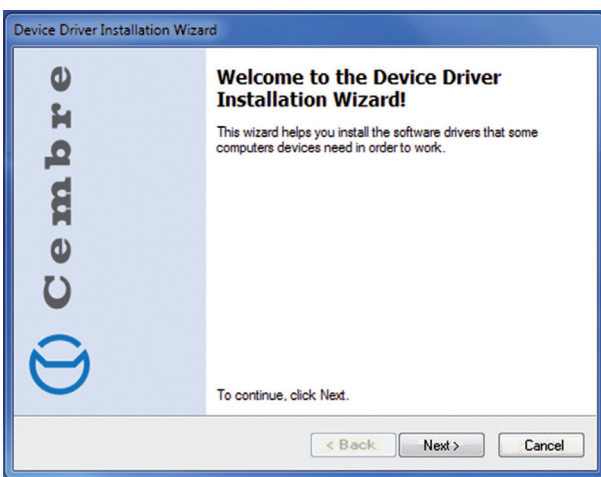
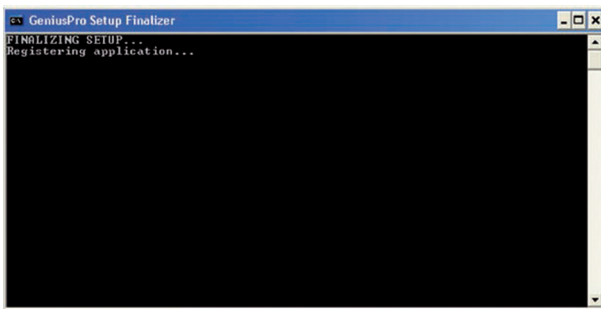
Click *Next*



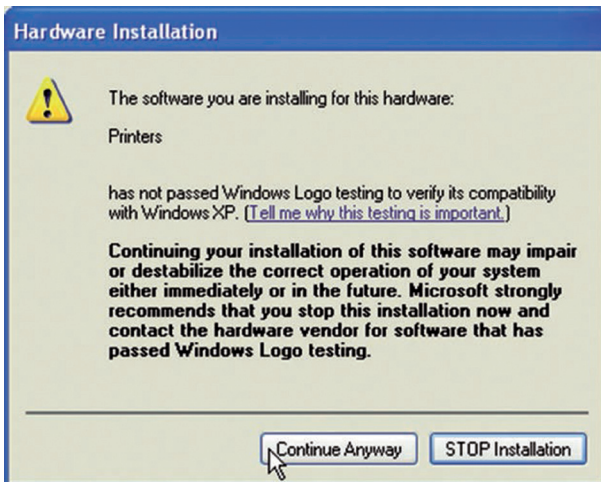
The following window shows the path of the software installation.

To continue, click *Next*

The GENIUSPRO **Setup Finalizer** will now commence and start the printer driver installation wizard



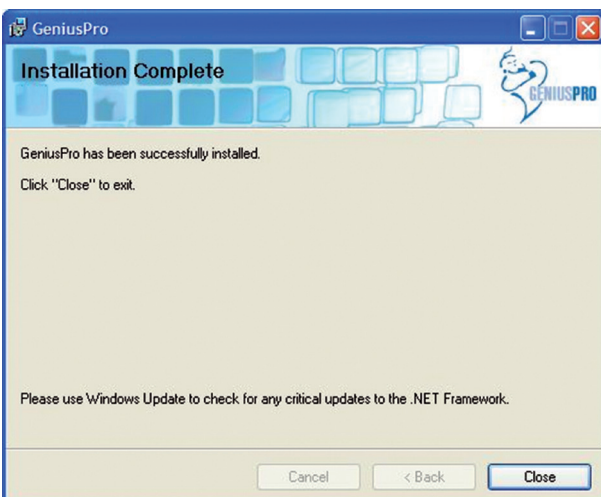
Click *Next*



To complete the installation click *Continue Anyway*



Click *Finish* to complete the installation.



Click *Close* to exit.



When installation is complete, the GENIUSPRO icon will appear on the desktop.

mg3 PRINTER DRIVER INSTALLATION

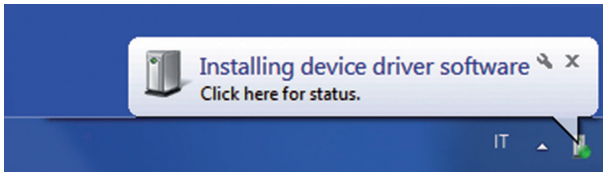
Connect the USB cable between MG3 and the computer.

Connect MG3 to mains power and switch on at the back of the printer.

Windows will indicate that it has found new hardware.



Driver search for MG3 printer.



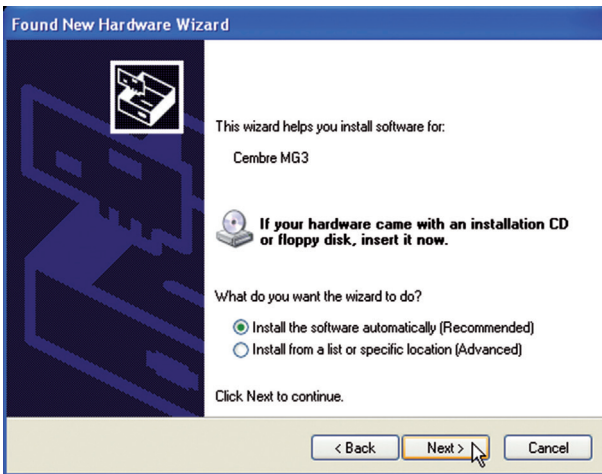
If WINDOWS 7/8 have been configured correctly, they will automatically search for and install the printer driver. This may take a few minutes to complete.



If successful, the MG3 printer icon will appear in **Devices and Printers**

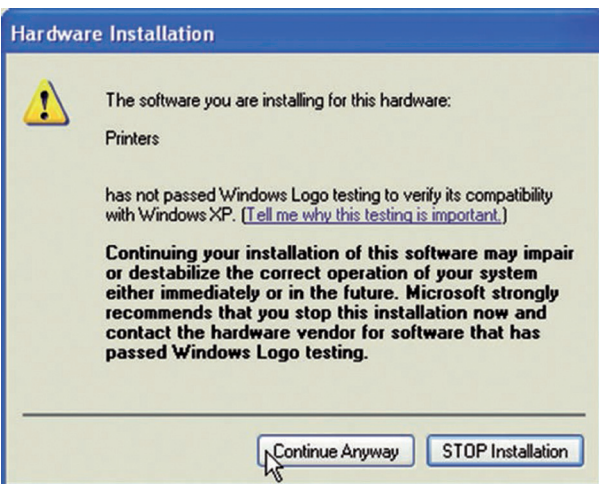


On wizard window select *No, not this time*



Click *Next*

On next window select the option *Install the software automatically*



Click *Next*

To complete the installation click *Continue Anyway*



Click *Finish* to complete the installation



The MG3 printer icon will now appear in the *Printers and Faxes*



On installation of GENIUSPRO a 30 day trial usage period commences.



To continue usage after 30 days, the user must register and license key activation must occur before this period expires, otherwise access to the program will be denied.

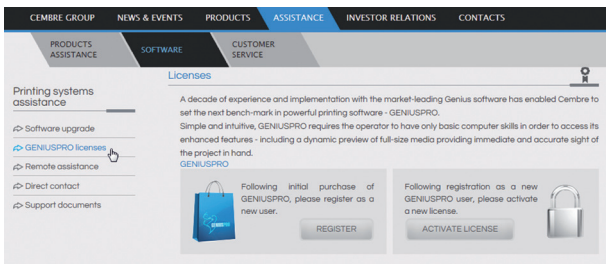
User Registration Process

Note - The registration process must be carried out on a PC connected to the Internet.

Access www.cembre.com , click **ASSISTANCE** then click **SOFTWARE**.

On the left select **GENIUSPRO licences**

Click **REGISTER**



New User registration

* Mandatory field

Email *

Username *

Password *

Confirm password *

Main Cembre supplier* ⓘ

Printers owned

- MARKINGenius ⓘ
- MG2
- Rolly1000
- Rolly2000
- Rolly2000 TR1
- Rolly2000 TR2
- Plotter

Printer serial numbers * ⓘ

Complete all mandatory fields in the **New User Registration** form.

Note – Remember the Username & Password as they are needed to log in to the Users own reserved area following registration, eg for Offline license activation.

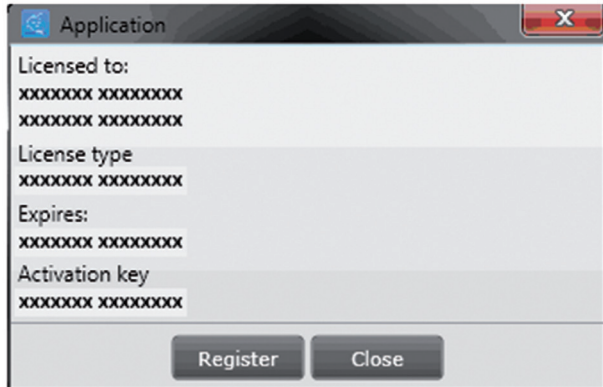
Click **Send**

Cembre will verify the data and notify the user, of their approval or otherwise, by email in as short a time as possible.

Once approved, the registration process must be completed in GENIUSPRO



Click *License* on the Home ribbon.

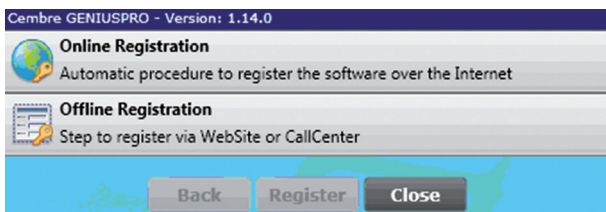


The Application window shows current license details.

Click *Register*

Choose Online or Offline method of License activation.

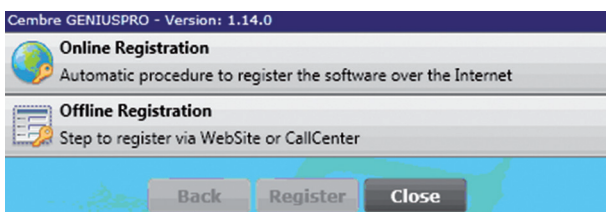
ONLINE REGISTRATION



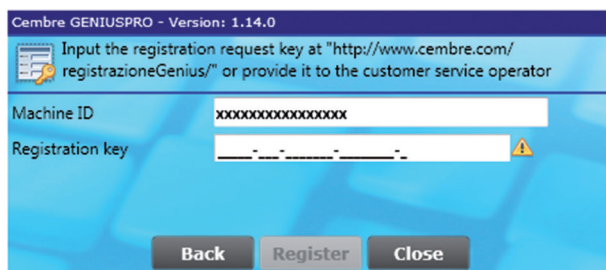
Click *Online Registration* only if the PC running GENIUSPRO is connected to the Internet.

Enter Username & Password remembered from User registration. Following a successful check of this data a license will automatically be activated and the user granted full GENIUSPRO functionality without expiration (per installation of the software).

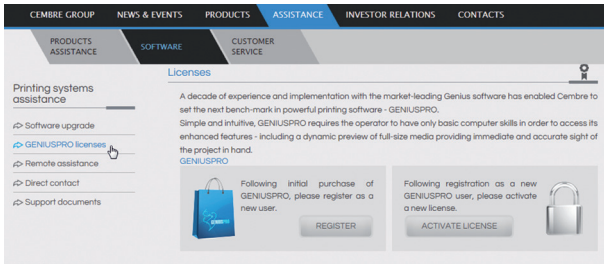
OFFLINE REGISTRATION



Click *Offline Registration* only if the PC running GENIUSPRO is not connected to the Internet.



From this window, note the Machine ID (Processor ID).



Log in

Registered users only may log in here.



Username

Password

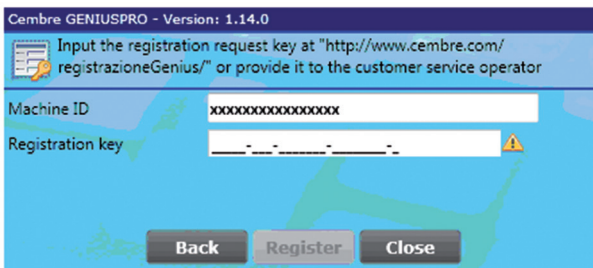
Remember me

Processor ID

ACTIVATE LICENSE

Activation code correctly generated.

XXXXXXXX-XXX-XXXXXXXX-XXXX-XXX-XX



On a different PC that is Internet-enabled Access www.cembre.com , click **ASSISTANCE** then click **SOFTWARE**.

Click **ACTIVATE LICENSE**

Log in with previously registered Username & Password.

Insert the previously noted Machine ID in the **Processor ID** field and click **Activate License**

After a few seconds an Activation code will appear at the top of the web page.

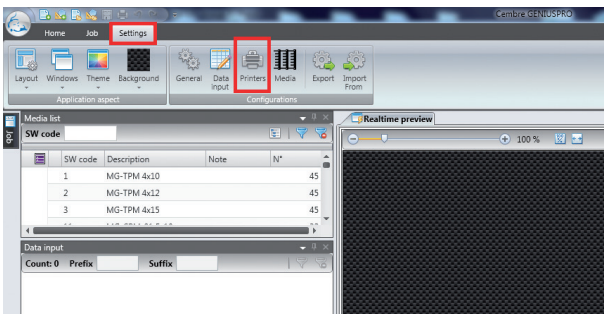
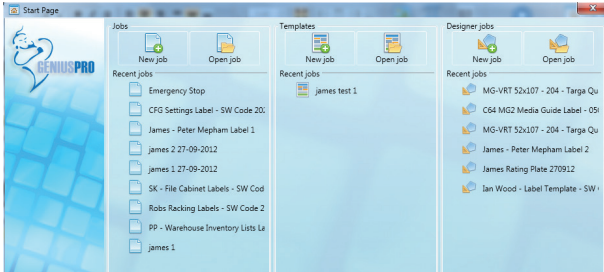
Note this code and return to the PC running GENIUSPRO

Open the program and enter the noted Activation code in **Registration key**

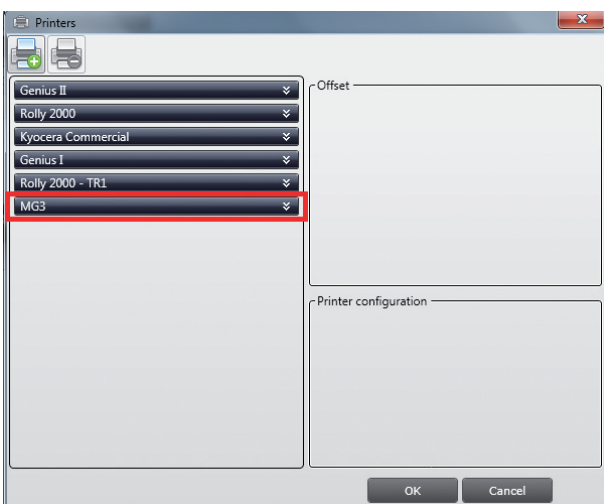
GENIUSPRO will activate automatically and provide the user with full functionality without expiration (per installation of the software).



Double click on GENIUSPRO icon on the desktop, a loading window will appear until the Start window indicates the program is ready.



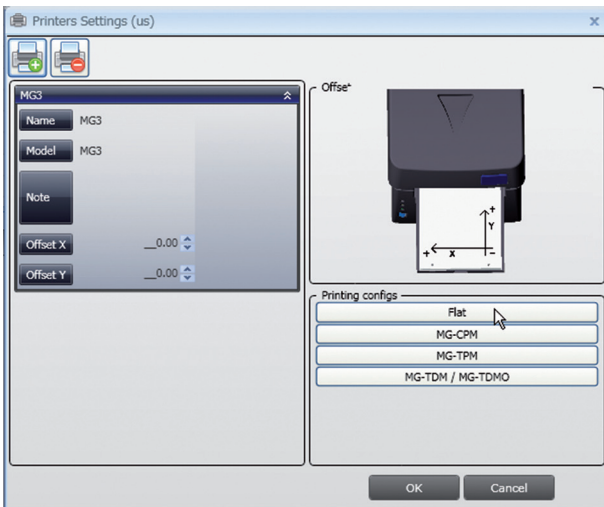
In Start window, click *Settings*, then *Printers*



In **PRINTER CONFIGURATION** window, click *Add Printer* and select *MG3* from the list.

The GENIUSPRO configuration is finished.

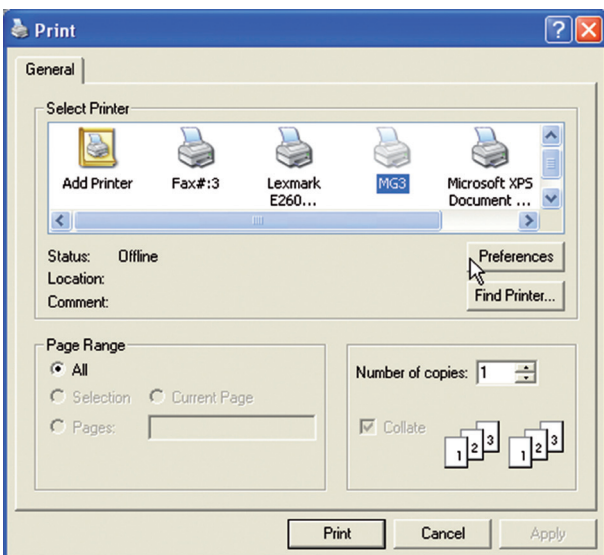
Now you can print with MG3



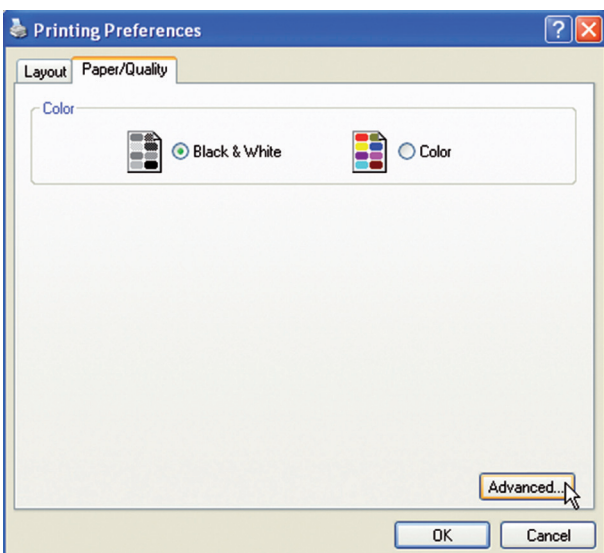
If, when printing, MG3 does not accept the template, configure templates thus.

TEMPLATE CONFIGURATION

Select **MG3** printer and click one of the four printing configurations (here **FLAT**).

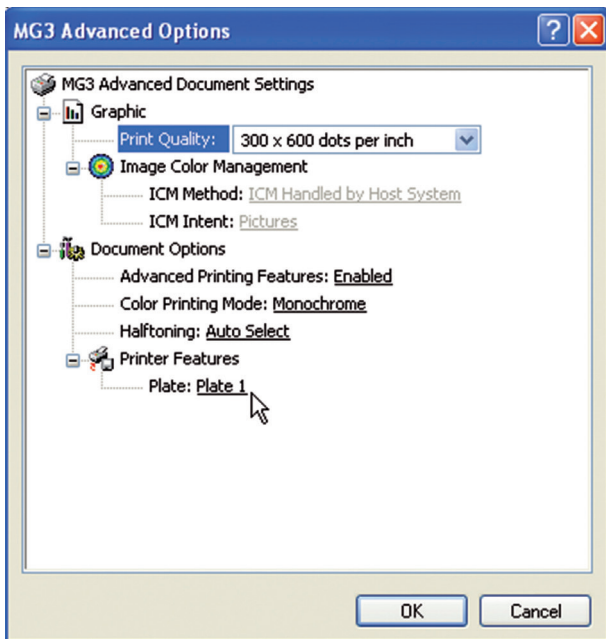


Click on **Preferences**



Select the colour option, **Black & White**

Select **Advanced**



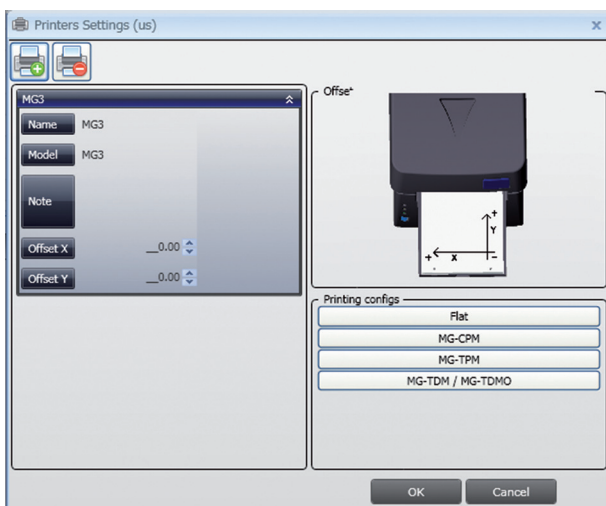
Set the values:

Print quality: 300 x 600 dpi
Plate: Plate 1

Click **OK** for all the open windows to confirm the new settings. Return to **PRINTER CONFIGURATION** window.

Repeat the operation for the other printing configurations by setting:

MG-CPM = *plate 2*
 MG-TPM = *plate 3*
 MG-TDM/TDMO = *plate 4*



EDIT OFFSET

System default print position values.

Normally these values are set to *0* and do not require adjustment.

Please refer to the user manual for individual media print position fine tuning.

Click **OK** to save and **EXIT**

Now read the User Manual to calibrate MG3 and commence working.